

CRA RESOLUTION NO. 2022-2

A RESOLUTION OF THE ST. JOHNS COUNTY COMMUNITY REDEVELOPMENT AGENCY, FLORIDA, DESIGNATING ONE HUNDRED TWENTY PARCELS WITHIN THE WEST AUGUSTINE COMMUNITY REDEVELOPMENT AREA FOR AFFORDABLE HOUSING DEVELOPMENT OR USES COMPLIMENTING THE DEVELOPMENT OF AFFORDABLE HOUSING.

**RECITALS**

WHEREAS, the St. Johns County Community Redevelopment Agency ("Agency") owns parcels of real property within the boundary of the West Augustine Community Redevelopment Area ("West Augustine Area"); and

WHEREAS, within St. Johns County, Florida, there is a shortage of housing units available for ownership which many persons and families can afford. This shortage constitutes a threat to the health and safety of the residents of the County. Such shortage cannot be relieved except through the encouragement of the development of owner-occupied affordable housing; and

WHEREAS, the West Augustine Community Redevelopment Plan recognizes the need for owner-occupied affordable housing within the West Augustine Area; and

WHEREAS, the Agency has identified 120 parcels, consisting of approximately 27.46 acres within the boundaries of the West Augustine Area, which are be suitable for single-family or multi-family owner-occupied affordable housing projects or provide uses that will compliment affordable housing uses ("Subject Properties"). A list identifying the Subject Properties is attached hereto as Exhibit "A" and incorporated by reference and made a part hereof; and

WHEREAS, in order to provide owner-occupied affordable housing, conditioned upon the availability of allocated funds, St. Johns County will provide funds (either local, state or federal monies, including grants) and in-kind services to provide roads and other improvements to and on the Subject Property when mutually deemed necessary in order to create developable lots on which such housing can be built; and

WHEREAS, in order to provide owner-occupied affordable housing, St. Johns County will partner with private-sector builders when mutually deemed necessary through appropriate procurement process to construct such homes and with the City of St. Augustine to provide water and sewer service to the Subject Property; and

WHEREAS, the Community Redevelopment Agency, in partnership with the volunteer-led West Augustine Community Redevelopment Area Steering Committee, shall establish the Subject Properties for the development of owner-occupied affordable housing or the development of uses complimenting the development of affordable housing; and

WHEREAS, the affordable housing designation would restrict those parcels developed for owner-occupied affordable housing to persons earning not more than 140 percent of the St. Johns County AMI.

NOW, THEREFORE, BE IT RESOLVED BY THE ST. JOHNS COUNTY COMMUNITY REDEVELOPMENT AGENCY:

**Section 1.** The above recitals are hereby incorporated into the body of this resolution, and are adopted as findings of fact.

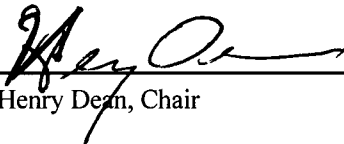
**Section 2.** The Community Redevelopment Agency of St. Johns County hereby designates the one hundred twenty parcels within the West Augustine Area as identified on Exhibit "A", for the use of owner-occupied affordable housing development or uses complimenting the development of affordable housing.

**Section 3.** To the extent that there are typographical, administrative, or scrivener's errors that do not change the tone, tenor, or context of this resolution, then this resolution may be revised without further action by the Board of County Commissioners.

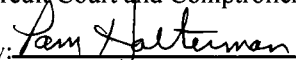
**Section 4.** This resolution shall be effective upon its adoption by the Board.

**PASSED AND ADOPTED** by the St. Johns County Community Redevelopment Agency, this 2 day of August, 2022

ST. JOHNS COUNTY COMMUNITY  
REDEVELOPEMNT AGENCY

By:   
Henry Dean, Chair

ATTEST: Brandon J. Patty, Clerk of the  
Circuit Court and Comptroller

By:   
Deputy Clerk



Rendition Date 8/4/22

**EXHIBIT "A"**

<b>Parcel ID</b>	<b>Acreage</b>	<b>Address</b>	<b>Property Description</b>
1157000130	0.21	751 N MCLAUGHLIN ST	4-28 AFRO AMERICAN SUB OF BLK 70 DANCY TRACT LOT 13 OR1874/598 &2208/566
1157200190	0.15	818 HELEN ST	4-28 AFRO AMERICAN SUB OF BLK 70 DANCY TRACT LOT 19 OR1874/598 &2208/566
1157500080	0.22	817 E AIKEN ST	4-28 AFRO AMERICAN SUB OF BLK 71 DANCY TRACT LOT 8 OR1874/598 &2208/566
1157500090	0.15	813 E AIKEN ST	4-28 AFRO AMERICAN SUB OF BLK 71 DANCY TRACT LOT 9 OR1874/598 &2208/566
1157500100	0.14	809 E AIKEN ST	4-28 AFRO AMERICAN SUB OF BLK 71 DANCY TRACT LOT 10 OR1874/598 &2208/566
1157500110	0.14	805 E AIKEN ST	4-28 AFRO AMERICAN SUB OF BLK 71 DANCY TRACT LOT 11 OR1874/598 &2208/566
1157500120	0.14	801 E AIKEN ST	4-28 AFRO AMERICAN SUB OF BLK 71 DANCY TRACT LOT 12 OR1874/598 &2208/566
1157800080	0.24	817 AVERY ST	4-28 AFRO AMERICAN SUB OF BLK 72 LOTS 2 3 5 & 6 DANCY TRACT LOT 8 OR1874/598 &2208/566
1157800090	0.23	816 E AIKEN ST	4-28 AFRO AMERICAN SUB OF BLK 72 LOTS 2 3 5 & 6 DANCY TRACT LOT 9 OR1874/598 &2208/566
1165500000	0.15	895 E AIKEN ST	4-28 AFRO-AMERICAN SUB OF BLK 80 DANCY TRACT LOT 1 OR1874/598 &2208/566
1166000230	0.22	878 JOSIAH ST	4-28 AFRO-AMERICAN SUB OF BLK 80 DANCY TRACT LOT 23 OR1874/598 &2208/566
1166000240	0.14	882 JOSIAH ST	4-28 AFRO-AMERICAN SUB OF BLK 80 DANCY TRACT LOT 24 OR1874/598 &2208/566
1166000250	0.14	886 JOSIAH ST	4-28 AFRO-AMERICAN SUB OF BLK 80 DANCY TRACT LOT 25 OR1874/598 &2208/566
1166000260	0.14	890 JOSIAH ST	4-28 AFRO-AMERICAN SUB OF BLK 80 DANCY TRACT LOT 26 OR1874/598 &2208/566
1166000270	0.14	894 JOSIAH ST	4-28 AFRO-AMERICAN SUB OF BLK 80 DANCY TRACT LOT 27 OR1874/598 &2208/566
1166000280	0.23	820 N VOLUSIA ST	4-28 AFRO-AMERICAN SUB OF BLK 80 DANCY TRACT LOT 28 OR1874/598 &2208/566

1166000290	0.23	840 N VOLUSIA ST	4-28 AFRO-AMERICAN SUB OF BLK 80 DANCY TRACT LOT 29 OR1874/598 &2208/566
1166000300	0.22	860 N VOLUSIA ST	4-28 AFRO-AMERICAN SUB OF BLK 80 DANCY TRACT LOT 30 OR1874/598 &2208/566
1168300030	0.17	939 JOHN ST	AFRO AMERICAN SUB OF LOTS 1 2 4 5 & 6 BLK 84 DANCY TRACT LOT 3 BLK 84 OR1874/598 &2208/566
1168300060	0.25	925 JOHN ST	3-47 AFRO AMERICAN SUB OF LOTS 1 2 4 5 & 6 BLK 84 DANCY TRACT LOT 6 OR1874/598 &2208/566
1168300070	0.22	921 JOHN ST	3-47 AFRO AMERICAN SUB OF LOTS 1 2 4 5 & 6 BLK 84 DANCY TRACT LOT 7 OR1874/598 &2208/566
1168300080	0.23	917 JOHN ST	3-47 AFRO AMERICAN SUB OF LOTS 1 2 4 5 & 6 BLK 84 DANCY TRACT LOT 8 OR1874/598 &2208/566
1168300090	0.14	913 JOHN ST	3-47 AFRO AMERICAN SUB OF LOTS 1 2 4 5 & 6 BLK 84 DANCY TRACT LOT 9 OR1874/598 &2208/566
1168300100	0.14	909 JOHN ST	3-47 AFRO AMERICAN SUB OF LOTS 1 2 4 5 & 6 BLK 84 DANCY TRACT LOT 10 OR2208/566
1168300110	0.14	905 JOHN ST	3-47 AFRO AMERICAN SUB OF LOTS 1 2 4 5 & 6 BLK 84 DANCY TRACT LOT 11 OR1874/598 &2208/566
1169300000	0.14	933 PEARL ST	3-47 AFRO AMERICAN SUB OF BLK 85 DANCY TRACT LOT 4 OR1874/598 &2208/566
1169300050	0.23	829 PEARL ST	3-47 AFRO AMERICAN SUB OF BLK 85 DANCY TRACT LOT 5 OR1874/598 &2208/566
1169800230	0.23	928 JOHN ST	3-47 AFRO AMERICAN SUB OF BLK 85 DANCY TRACT LOT 23 OR1874/598 &2208/566
1169800240	0.14	938 JOHN ST	3-47 AFRO AMERICAN SUB OF BLK 85 DANCY TRACT LOT 24 OR1874/598 &2208/566
1170400000	0.15	939 BRUEN ST	3-47 AFRO-AMERICAN SUB OF BLK 86 DANCY TRACT LOT 3 OR1874/598 &2208/566
1171600000	0.15	945 HELEN ST	4-28 AFRO-AMERICAN SUB OF BLK 87 DANCY TRACT LOT 1 OR1874/598 &2208/566
1171600020	0.15	941 HELEN ST	4-28 AFRO-AMERICAN SUB OF BLK 87 DANCY TRACT LOT 2 OR1874/598 &2208/566
1171600030	0.15	937 HELEN ST	4-28 AFRO-AMERICAN SUB OF BLK 87 DANCY TRACT LOT 3 OR1874/598 &2208/566

1171600040	0.13	933 HELEN ST	4-28 AFRO-AMERICAN SUB OF BLK 87 DANCY TRACT LOT 4 OR1874/598 &2208/566
1171600060	0.22	925 HELEN ST	4-28 AFRO-AMERICAN SUB OF BLK 87 DANCY TRACT LOT 6 OR1874/598 &2208/566
1172000220	0.21	924 BRUEN ST	4-28 AFRO-AMERICAN SUB OF BLK 87 DANCY TRACT LOT 22 OR2799/1454(Q/C
1172000230	0.23	928 BRUEN ST	4-28 AFRO-AMERICAN SUB OF BLK 87 DANCY TRACT LOT 23 OR1874/598 &2208/566
1172000240	0.13	932 BRUEN ST	4-28 AFRO-AMERICAN SUB OF BLK 87 DANCY TRACT LOT 24 OR1874/598 &2208/566
1172000250	0.15	936 BRUEN ST	4-28 AFRO-AMERICAN SUB OF BLK 87 DANCY TRACT LOT 25 OR1874/598 &2208/566
1172000280	0.24	620 N BREVARD ST	4-28 AFRO-AMERICAN SUB OF BLK 87 DANCY TRACT LOT 28 OR1874/598 &2208/566
1172000290	0.23	640 N BREVARD ST	4-28 AFRO-AMERICAN SUB OF BLK 87 DANCY TRACT LOT 29 OR1874/598 &2208/566
1172000300	0.23	660 N BREVARD ST	4-28 AFRO-AMERICAN SUB OF BLK 87 DANCY TRACT LOT 30 OR1874/598 &2208/566
1172100000	0.14	945 JOSIAH ST	4-28 AFRO-AMERICAN SUB OF BLK 88 DANCY TRACT LOT 1 OR1874/598 &2208/566
1172100020	0.14	941 JOSIAH ST	4-28 AFRO-AMERICAN SUB OF BLK 88 DANCY TRACT LOT 2 OR1874/598 &2208/566
1172100030	0.14	937 JOSIAH ST	4-28 AFRO-AMERICAN SUB OF BLK 88 DANCY TRACT LOT 3 OR1874/598 &2208/566
1172800240	0.14	932 HELEN ST	4-28 AFRO-AMERICAN SUB OF BLK 88 DANCY TRACT LOT 24 OR1874/598 &2208/566
1172800250	0.14	936 HELEN ST	4-28 AFRO-AMERICAN SUB OF BLK 88 DANCY TRACT LOT 25 OR1874/598 &2208/566
1172800260	0.14	940 HELEN ST	4-28 AFRO-AMERICAN SUB OF BLK 88 DANCY TRACT LOT 26 OR1874/598 &2208/566
1172800270	0.14	944 HELEN ST	4-28 AFRO-AMERICAN SUB OF BLK 88 DANCY TRACT LOT 27 OR1874/598 &2208/566
1172800280	0.23	720 N BREVARD ST	4-28 AFRO-AMERICAN SUB OF BLK 88 DANCY TRACT LOT 28 OR1874/598 &2208/566
1172800290	0.23	740 N BREVARD ST	4-28 AFRO-AMERICAN SUB OF BLK 88 DANCY TRACT LOT 29 OR1874/598 &2208/566
1172800300	0.23	760 N BREVARD ST	4-28 AFRO-AMERICAN SUB OF BLK 88 DANCY TRACT LOT 30 OR1874/598 &2208/566

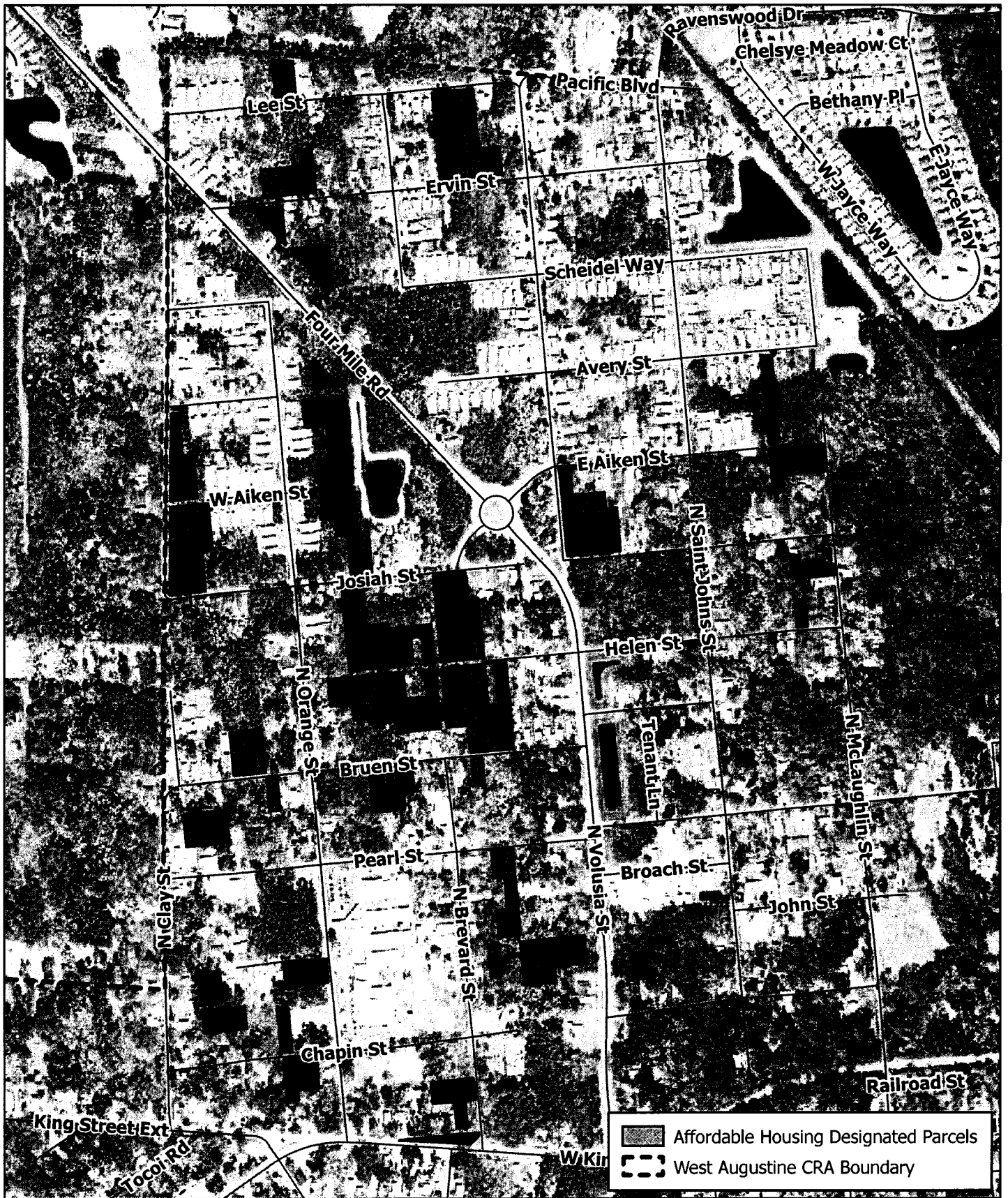
1173500000	0.06	W KING ST	3-47 AFRO AMERICAN SUB OF BLK 91 A DANCY TR LOTS 1 & 2 (EX R/W OF RD #S214 IN OR33/603) (EX SE'LY TRI PT TO SJC IN OR2549/1952) OR2208/566
1173700060	0.23	141 N BREVARD ST	3-47 AFRO AMERICAN SUB OF LOTS 1 & 4 BLK 92 DANCY TRACT LOT 6 OR2208/566
1173700070	0.23	121 N BREVARD ST	3-47 AFRO AMERICAN SUB OF LOTS 1 & 4 BLK 92 DANCY TRACT LOT 7 OR2208/566
1173800090	0.14	RAILROAD ST	3-47 AFRO AMERICAN SUB OF LOTS 1 & 4 BLK 92 DANCY TRACT LOT 9 OR2208/566
1175700060	0.23	975 BRUEN ST	3-47 AFRO-AMERICAN SUB OF BLK 95 DANCY TRACT LOT 6 OR2208/566
1175700070	0.23	971 BRUEN ST	3-47 AFRO-AMERICAN SUB OF BLK 95 DANCY TRACT LOT 7 OR2208/566
1175700080	0.23	967 BRUEN ST	3-47 AFRO-AMERICAN SUB OF BLK 95 DANCY TRACT LOT 8 OR2208/566
1175700090	0.14	963 BRUEN ST	3-47 AFRO-AMERICAN SUB OF BLK 95 DANCY TRACT LOT 9 OR2208/566
1176800030	0.14	987 HELEN ST	4-28 AFRO AMERICAN SUB OF BLK 96 DANCY TRACT LOT 3 OR2208/566
1176800040	0.15	983 HELEN ST	4-28 AFRO AMERICAN SUB OF BLK 96 DANCY TRACT LOT 4 OR2208/566
1176800050	0.22	979 HELEN ST	4-28 AFRO AMERICAN SUB OF BLK 96 DANCY TRACT LOT 5 OR2208/566
1176800060	0.23	975 HELEN ST	4-28 AFRO AMERICAN SUB OF BLK 96 DANCY TRACT LOT 6 OR2208/566
1176800070	0.24	971 HELEN ST	4-28 AFRO AMERICAN SUB OF BLK 96 DANCY TRACT LOT 7 OR2208/566
1176800080	0.24	967 HELEN ST	4-28 AFRO AMERICAN SUB OF BLK 96 DANCY TRACT LOT 8 OR2208/566
1176800090	0.13	963 HELEN ST	4-28 AFRO AMERICAN SUB OF BLK 96 DANCY TRACT LOT 9 OR2208/566
1177000120	0.15	951 HELEN ST	4-28 AFRO AMERICAN SUB OF BLK 96 DANCY TRACT LOT 12 OR2208/566
1177000130	0.23	661 N BREVARD ST	4-28 AFRO AMERICAN SUB OF BLK 96 DANCY TRACT LOT 13 OR2208/566
1177000140	0.23	641 N BREVARD ST	4-28 AFRO AMERICAN SUB OF BLK 96 DANCY TRACT LOT 14 OR2208/566

1177000150	0.23	621 N BREVARD ST	4-28 AFRO AMERICAN SUB OF BLK 96 DANCY TRACT LOT 15 OR2208/566
1177600050	0.24	979 JOSIAH ST	4-28 AFRO-AMERICAN SUB OF BLK 97 DANCY TRACT LOT 5 OR2208/566
1177600060	0.22	975 JOSIAH ST	4-28 AFRO-AMERICAN SUB OF BLK 97 DANCY TRACT LOT 6 OR2516/67
1177700150	0.22	721 N BREVARD ST	4-28 AFRO-AMERICAN SUB OF BLK 97 DANCY TRACT LOT 15 OR2208/566
1177700160	0.15	950 HELEN ST	4-28 AFRO-AMERICAN SUB OF BLK 97 DANCY TRACT LOT 16 OR2208/566
1177800180	0.15	958 HELEN ST	4-28 AFRO-AMERICAN SUB OF BLK 97 DANCY TRACT LOT 18 OR2208/566
1177800190	0.14	962 HELEN ST	4-28 AFRO-AMERICAN SUB OF BLK 97 DANCY TRACT LOT 19 OR2208/566
1177800200	0.24	966 HELEN ST	4-28 AFRO-AMERICAN SUB OF BLK 97 DANCY TRACT LOT 20 OR2208/566
1177800210	0.23	970 HELEN ST	4-28 AFRO-AMERICAN SUB OF BLK 97 DANCY TRACT LOT 21 OR2208/566
1177800220	0.22	974 HELEN ST	4-28 AFRO-AMERICAN SUB OF BLK 97 DANCY TRACT LOT 22 OR2208/566
1177800230	0.23	978 HELEN ST	4-28 AFRO-AMERICAN SUB OF BLK 97 DANCY TRACT LOT 23 OR2208/566
1177900040	0.14	983 W AIKEN ST	4-28 AFRO AMERICAN SUB OF BLK 98 DANCY TRACT LOT 4 OR2208/566
1177900050	0.24	979 W AIKEN ST	4-28 AFRO AMERICAN SUB OF BLK 98 DANCY TRACT LOT 5 OR2208/566
1177900060	0.23	975 W AIKEN ST	4-28 AFRO AMERICAN SUB OF BLK 98 DANCY TRACT LOT 6 OR2208/566
1177900210	0.23	970 JOSIAH ST	4-28 AFRO AMERICAN SUB OF BLK 98 DANCY TRACT LOT 21 OR2208/566
1177900220	0.23	974 JOSIAH ST	4-28 AFRO AMERICAN SUB OF BLK 98 DANCY TRACT LOT 22 OR2208/566
1178000030	0.14	AVERY ST	4-28 AFRO AMERICAN SUB OF BLK 99 DANCY TRACT LOT 3 OR2208/566
1178000040	0.14	AVERY ST	2-28 AFRO AMERICAN SUB OF BLK 99 DANCY TRACT LOT 4 OR2208/566
1178000050	0.23	AVERY ST	2-28 AFRO AMERICAN SUB OF BLK 99 DANCY TRACT LOT 5 OR2208/566

117800060	0.22	AVERY ST	4-28 AFRO AMERICAN SUB OF BLK 99 DANCY TRACT LOT 6 OR2208/566
117800220	0.23	W AIKEN ST	4-28 AFRO AMERICAN SUB OF BLK 99 DANCY TRACT LOT 22 OR2208/566
117800230	0.22	W AIKEN ST	4-28 AFRO AMERICAN SUB OF BLK 99 DANCY TRACT LOT 23 OR2208/566
117800240	0.15	W AIKEN ST	4-28 AFRO AMERICAN SUB OF BLK 99 DANCY TRACT LOT 24 OR2208/566
117810070	0.22	978 AVERY ST	4-8 AFRO AMERICAN SUB OF BLK 100 DANCY TRACT LOT 7 BLK A OR2208/566
117830030	0.16	1009 CHAPIN ST	3-47 AFRO-AMERICAN SUBD OF BLK 101 DANCY TRACT LOT 3 OR2208/566
117830040	0.16	1013 CHAPIN ST	3-47 AFRO-AMERICAN SUBD OF BLK 101 DANCY TRACT LOT 4 OR2208/566
117830050	0.22	1017 CHAPIN ST	3-47 AFRO-AMERICAN SUBD OF BLK 101 DANCY TRACT LOT 5 OR2208/566
117930000	0.45	JOHN ST	1-1 DANCY TRACT N 1/2 LOT 4 BLK 102 OR2208/566
117940070	0.14	1041 JOHN ST	3-47 AFRO AMERICAN SUB OF LOTS 2 3 5 & 6 BLK 102 DANCY TRACT LOT 7 OR2208/566
117940080	0.15	1045 JOHN ST	3-47 AFRO AMERICAN SUB OF LOTS 2 3 5 & 6 BLK 102 DANCY TRACT LOT 8 OR2208/566
117940100	0.24	274 CLAY ST	3-47 AFRO AMERICAN SUB OF LOTS 2 3 5 & 6 BLK 102 DANCY TRACT LOT 10 OR2208/566
117940110	0.22	250 CLAY ST	3-47 AFRO AMERICAN SUB OF LOTS 2 3 5 & 6 BLK 102 DANCY TRACT LOT 11 OR2208/566
117940190	0.24	1016 CHAPIN ST	3-47 AFRO AMERICAN SUB OF LOTS 2 3 5 & 6 BLK 102 DANCY TRACT LOT 19 OR3487/809(Q/C)
118060040	0.17	BRUEN ST	3-47 AFRO AMERICAN SUB OF LOTS 2 3 4 5 6 BLK 104 DANCY TRACT LOT 4 OR2208/566
1180900130	0.23	CLAY ST	3-47 AFRO AMERICAN SUB OF LOTS 2 3 4 5 6 BLK 104 DANCY TRACT LOT 13 OR2208/566
1180900140	0.23	CLAY ST	3-47 AFRO AMERICAN SUB OF LOTS 2 3 4 5 6 BLK 104 DANCY TRACT LOT 14 OR2208/566
1180900150	0.23	CLAY ST	3-47 AFRO AMERICAN SUB OF LOTS 2 3 4 5 6 BLK 104 DANCY TRACT LOT 15 OR2208/566
1181400200	0.24	BRUEN ST	4-28 AFRO AMERICAN SUB OF BLK 105 DANCY TRACT LOT 20 OR2208/566

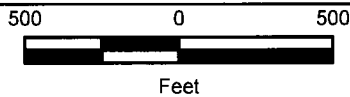


1181400210	0.24	BRUEN ST	4-28 AFRO AMERICAN SUB OF BLK 105 DANCY TRACT LOT 21 OR2208/566
1181400220	0.22	BRUEN ST	4-28 AFRO AMERICAN SUB OF BLK 105 DANCY TRACT LOT 22 OR2208/566
1182400080	1.54	N CLAY ST	4-28 AFRO AMERICAN SUB OF BLK 107 DANCY TRACT LOTS 8 THRU 15 (EX W 50FT IN CO RD) OR2208/566
1182500100	0.16	1037 AVERY ST	4-28 AFRO AMERICAN SUB OF BLK 108 DANCY TRACT LOT 10 (EX W PT OF CR) OR2208/566
1182500110	0.27	1036 W AIKEN ST	4-28 AFRO AMERICAN SUB OF BLK 108 DANCY TRACT LOTS 11 & 12 (EX W PT OF CR) OR2208/566
1182500130	0.24	1032 W AIKEN ST	4-28 AFRO AMERICAH SUB OF BLK 108 DANCY TRACT LOT 13 OR2516/67
1184710100	0.54	SCHEIDEL WAY	4-8 AFRO AMERICAN SUB OF BLK 123 DANCY TRACT LOT 10 OR2208/566
1184710300	0.34	995 ERVIN ST	4-8 AFRO AMERICAN SUB OF BLK 123 DANCY TRACT LOT 30 OR2208/566
1184750230	0.77	994 ERVIN ST	4-8 AFRO AMERICAN SUB OF BLK 127 DANCY TRACT LOTS 23 THRU 27 OR2208/56
1184760050	2.05	929 LEE ST	4-8 AFRO-AMERICAN SUB OF BLK 128 DANCY TRACT LOTS 5 THRU 8 & 18 THRU 23 OR2208/566
1184800030	0.2	987 PACIFIC BLVD	4-8 AFRO AMERICAN SUB OF BLK 132 DANCY TRACT LOT 3 OR2208/566
1184800040	0.17	983 PACIFIC BLVD	4-8 AFRO AMERICAN SUB OF BLK 132 DANCY TRACT LOT 4 OR2208/566



Project: j19460

DISCLAIMER:  
This map is for reference only. Data provided are derived from multiple sources with varying levels of accuracy. St. Johns County GIS Division disclaims all responsibility for the accuracy or completeness of the data shown hereon.



Photography Date: 2/2021

Date Prepared: 7/20/2022

Subject West Augustine  
CRA Properties





**District: 2**  
**Sarah S.**  
**Arnold**

**District: 3**  
**Paul M.**  
**Waldron**

**District: 5**  
**Henry Dean**



Basemap