

RESOLUTION NO. 85-101

RESOLUTION OF THE BOARD OF COUNTY  
COMMISSIONERS, OF ST. JOHNS COUNTY, FLORIDA

WHEREAS Aurda Corporation,  
as Owner, has applied to the Board of County Commissioners of  
St. Johns County, Florida, for approval to record a subdivision  
plat known as Country Club Unit Seven Replat,  
and,

NOW, THEREFORE, BE IT RESOLVED BY THE BOARD OF COUNTY  
COMMISSIONERS OF ST. JOHNS COUNTY, FLORIDA, as follows:

SECTION 1. The above-described subdivision plat is  
conditionally approved by the Board of County Commissioners  
of St. Johns County, Florida, subject to Section #5.

SECTION 2. The Construction Bond is waived

SECTION 3. The Warranty Bond is waived.

SECTION 4. The Clerk is instructed to file the title opinion.

SECTION 5. The approval described in Section #1, shall  
not take effect until the plat has been signed by each of the  
following departments, persons or offices:

- a) Chairman or Vice-Chairman of the Board of County  
Commissioners of St. Johns County, Florida
- b) County Attorney
- c) County Planning Department or Office
- d) County Zoning Department or Office
- e) Clerk of Courts

The Clerk shall not sign or accept the plat for recording until it has been signed by each of the above persons or entities described in a.) through d.) above and the construction bond unless waived, has been delivered to the Clerk. If the plat is not signed and accepted by the Clerk for recording within 14 days from the date hereof, then the above-described conditional approval and acceptances shall automatically terminate. If the plat is signed by the Clerk on or before such time, the conditions described herein, shall be deemed to have occurred.

ADOPTED by the Board of County Commissioners of St. Johns County, Florida, this 23rd day of July, 1985.

BOARD OF COUNTY COMMISSIONERS  
OF ST. JOHNS COUNTY, FLORIDA

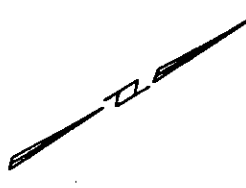
BY: Ray Walden

Its Chairman

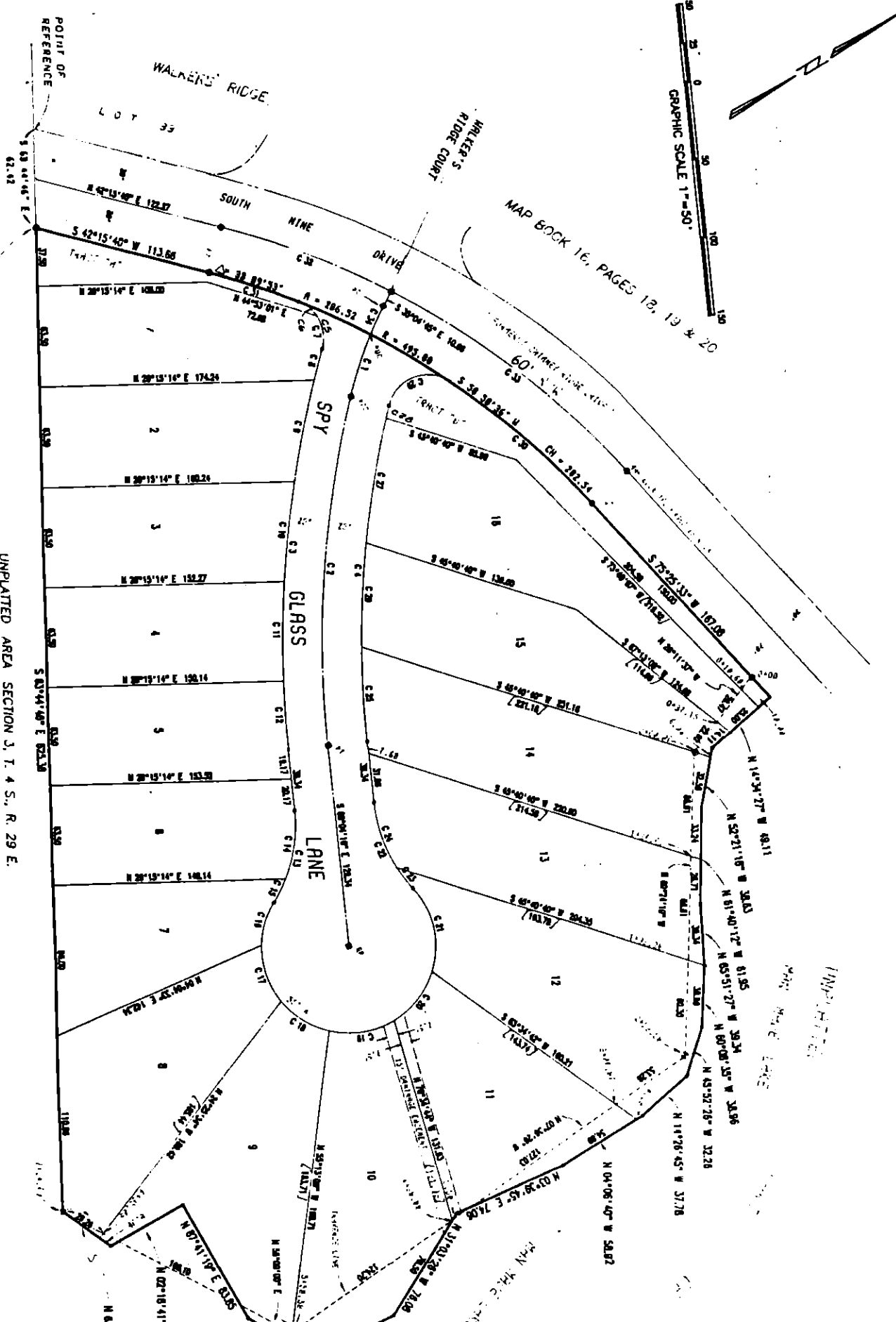
ATTEST: Carl "Bud" Markel, Clerk

By: Cheryl Kent  
Deputy Clerk

COUNTRY CLUB UNIT SEVEN REPLAT  
 BEING A REPLAT OF COUNTRY CLUB UNIT SEVEN AS RECORDED IN MAP BOOK 19 PAGES 3 & 4  
 ST. JOHNS COUNTY, FLORIDA.



GRAPHIC SCALE 1"=50'  
 MAP BOOK 16, PAGES 18, 19 & 20



CURVE TABLE

NAME	ANGLE	RADIUS	LENGTH	BEARING	CHORD
C 1	87°27'31"	207.88	69.16	S 25°13'20" E	40.18
C 2	181°03'39"	674.01	273.21	S 71°21'27" E	233.00
C 3	21°00'37"	608.01	237.24	S 20°31'28" E	214.00
C 4	18°00'33"	649.01	251.89	S 66°31'47" E	233.49
C 5	63°50'18"	23.00	36.81	S 66°13'28" E	14.00
C 6	34°10'48"	23.00	36.81	S 71°48'23" E	21.00
C 7	40°38'28"	23.00	36.81	S 47°48'28" E	20.28
C 8	01°38'43"	608.01	63.62	S 51°18'17" E	63.62
C 9	05°15'23"	608.01	63.62	S 01°49'24" E	63.54
C 10	02°12'33"	608.01	63.62	S 01°15'10" E	63.54
C 11	20°42'13"	608.01	63.62	S 40°42'10" E	63.54
C 12	20°42'13"	608.01	63.62	S 40°42'10" E	63.54
C 13	20°42'13"	608.01	63.62	S 40°42'10" E	63.54
C 14	20°42'13"	608.01	63.62	S 40°42'10" E	63.54
C 15	20°42'13"	608.01	63.62	S 40°42'10" E	63.54
C 16	20°42'13"	608.01	63.62	S 40°42'10" E	63.54
C 17	20°42'13"	608.01	63.62	S 40°42'10" E	63.54
C 18	20°42'13"	608.01	63.62	S 40°42'10" E	63.54
C 19	20°42'13"	608.01	63.62	S 40°42'10" E	63.54
C 20	20°42'13"	608.01	63.62	S 40°42'10" E	63.54
C 21	20°42'13"	608.01	63.62	S 40°42'10" E	63.54
C 22	20°42'13"	608.01	63.62	S 40°42'10" E	63.54
C 23	20°42'13"	608.01	63.62	S 40°42'10" E	63.54
C 24	20°42'13"	608.01	63.62	S 40°42'10" E	63.54
C 25	20°42'13"	608.01	63.62	S 40°42'10" E	63.54
C 26	20°42'13"	608.01	63.62	S 40°42'10" E	63.54
C 27	20°42'13"	608.01	63.62	S 40°42'10" E	63.54
C 28	20°42'13"	608.01	63.62	S 40°42'10" E	63.54
C 29	20°42'13"	608.01	63.62	S 40°42'10" E	63.54
C 30	20°42'13"	608.01	63.62	S 40°42'10" E	63.54
C 31	20°42'13"	608.01	63.62	S 40°42'10" E	63.54
C 32	20°42'13"	608.01	63.62	S 40°42'10" E	63.54
C 33	20°42'13"	608.01	63.62	S 40°42'10" E	63.54
C 34	20°42'13"	608.01	63.62	S 40°42'10" E	63.54

PREPARED BY W. A. DANIEL & ASSOCIATES, INC. - LAND SURVEYORS  
 609 BLANCH BUILDING - JACKSONVILLE BEACH, FLORIDA 32250

CAPTION: A PART OF COUNTRY CLUB UNIT SEVEN, AS RECORDED IN MAP BOOK 19, PAGES 3 AND 4 OF THE PUBLIC RECORDS OF ST. JOHNS COUNTY, FLORIDA TOGETHER WITH A PART OF SECTION 3, TOWNSHIP 4 SOUTH, RANGE 29 EAST, ST. JOHNS COUNTY, FLORIDA MORE PARTICULARLY DESCRIBED AS FOLLOWS: FOR A POINT OF REFERENCE COMMENCE AT THE SOUTHEASTERLY CORNER OF LOT 33, WALKER'S RIDGE, AS RECORDED IN MAP BOOK 16, PAGES 18, 19 AND 20 OF THE PUBLIC RECORDS OF SAID COUNTY; THENCE S.63°44'46"E. A DISTANCE OF 62.42 FEET TO THE SOUTHEASTERLY RIGHT OF WAY LINE OF SOUTH NINE DRIVE (FORMERLY CHIMNEY RIDGE DRIVE, A 60 FOOT RIGHT OF WAY BY MAP BOOK 16, PAGES 23 AND 24 OF SAID PUBLIC RECORDS) AND THE POINT OF BEGINNING; THENCE CONTINUE S.63°44'46"E. A DISTANCE OF 625.36 FEET; THENCE N.63°42'21"E. A DISTANCE OF 38.24 FEET; THENCE N.02°18'41"W. A DISTANCE OF 53.00 FEET; THENCE N.87°41'19"E. A DISTANCE OF 83.85 FEET; THENCE N.57°05'34"E. A DISTANCE OF 30.84 FEET; THENCE N.22°38'33"E. A DISTANCE OF 38.43 FEET; THENCE N.01°48'07"E. A DISTANCE OF 30.61 FEET; THENCE N.31°03'26"W. A DISTANCE OF 76.08 FEET; THENCE N.03°39'45"E. A DISTANCE OF 74.06 FEET; THENCE N.04°06'40"W. A DISTANCE OF 58.92 FEET; THENCE N.14°26'45"W. A DISTANCE OF 37.78 FEET; THENCE N.45°52'26"W. A DISTANCE OF 32.26 FEET; THENCE N.60°08'35"W. A DISTANCE OF 38.96 FEET; THENCE N.65°51'27"W. A DISTANCE OF 39.34 FEET; THENCE N.61°40'12"W. A DISTANCE OF 61.95 FEET; THENCE N.52°21'18"W. A DISTANCE OF 38.63 FEET; THENCE N.14°34'27"W. A DISTANCE OF 49.11 FEET; THENCE S.75°25'33"W., ALONG SAID RIGHT OF WAY LINE OF SOUTH NINE DRIVE, A DISTANCE OF 167.08 FEET TO THE POINT OF CURVE OF A CURVE CONCAVE SOUTHEASTERLY HAVING A RADIUS OF 495.00 FEET; THENCE SOUTHWESTERLY ALONG THE ARC OF SAID CURVE AND ALONG SAID RIGHT OF WAY LINE, A CHORD BEARING OF S.58°50'36"W. AND A CHORD DISTANCE OF 282.54 FEET TO THE POINT OF TANGENCY OF SAID CURVE; THENCE S.42°15'40"W., ALONG SAID RIGHT OF WAY LINE, A DISTANCE OF 113.66 FEET TO THE POINT OF BEGINNING.