

RESOLUTION 86- 120

A RESOLUTION OF THE BOARD OF COUNTY COMMISSIONERS OF ST. JOHNS COUNTY, FLORIDA PROVIDING FOR THE PAVING OF POPOLEE ROAD UNDER THE PROVISIONS OF ORDINANCE 76-21.

WHEREAS, the Board of County Commissioners of St. Johns County, Florida, has received and accepted the petition of at least 75% of the landowners fronting on the above mentioned streets, and from all owners of lots in Cypress Landing, a Subdivision using Popolee road as its sole access. The residents desire to have the Popolee Road paved pursuant to County Ordinance 76-21, with the Cypress Landing homeowners' association voluntarily agreeing to pay an amount of \$200.00 for each lot in Cypress Landing toward the cost of construction,

NOW THEREFORE, be it resolved by the Board of County Commissioners of St. Johns County, Florida as follows:

1. The offer of those residents of Cypress Landing (through the Cypress Landing Homeowners Association) to pay an amount of \$200.00 for their lot toward the cost of construction is hereby accepted.
2. The petition is hereby accepted and the project is authorized to commence upon receipt of the \$200.00 per lot payment from the Cypress Landing Homeowners Association and the payments described in paragraph #8 below
3. The beginning and ending points are the intersection of Popolee Road and Fruit Cove Road through the intersection of Popolee Road and Cypress Landing.
4. The estimated cost of the project is \$18,000.00
5. The sharing ratio shall be as follows:
 - Cypress Landing residents an amount of \$200.00 for each lot toward the cost of construction
 - St. Johns County, one third of the cost
 - The balance to be paid by the abutting landowners based on their proportionate share of equivalent road length as shown on the attachment.
6. The preliminary assessment rate is shown on the attached map.
7. The interest rate shall be 9.0 percent per annum shall commence to accrue April 1, 1987
8. The term of payment shall be in cash or by check to be paid prior to commencement of construction. Each owner of lots fronting on Popolee Road may elect to pay over a five year period with 20% plus interest due at each annual payment.
9. Annual payments shall commence with the tax bill due April 1, 1988, as mailed on or about November 1, 1987.

10. Principal and accrued interest may be prepaid at any time without penalty

DATED this 9th day of September, 1986

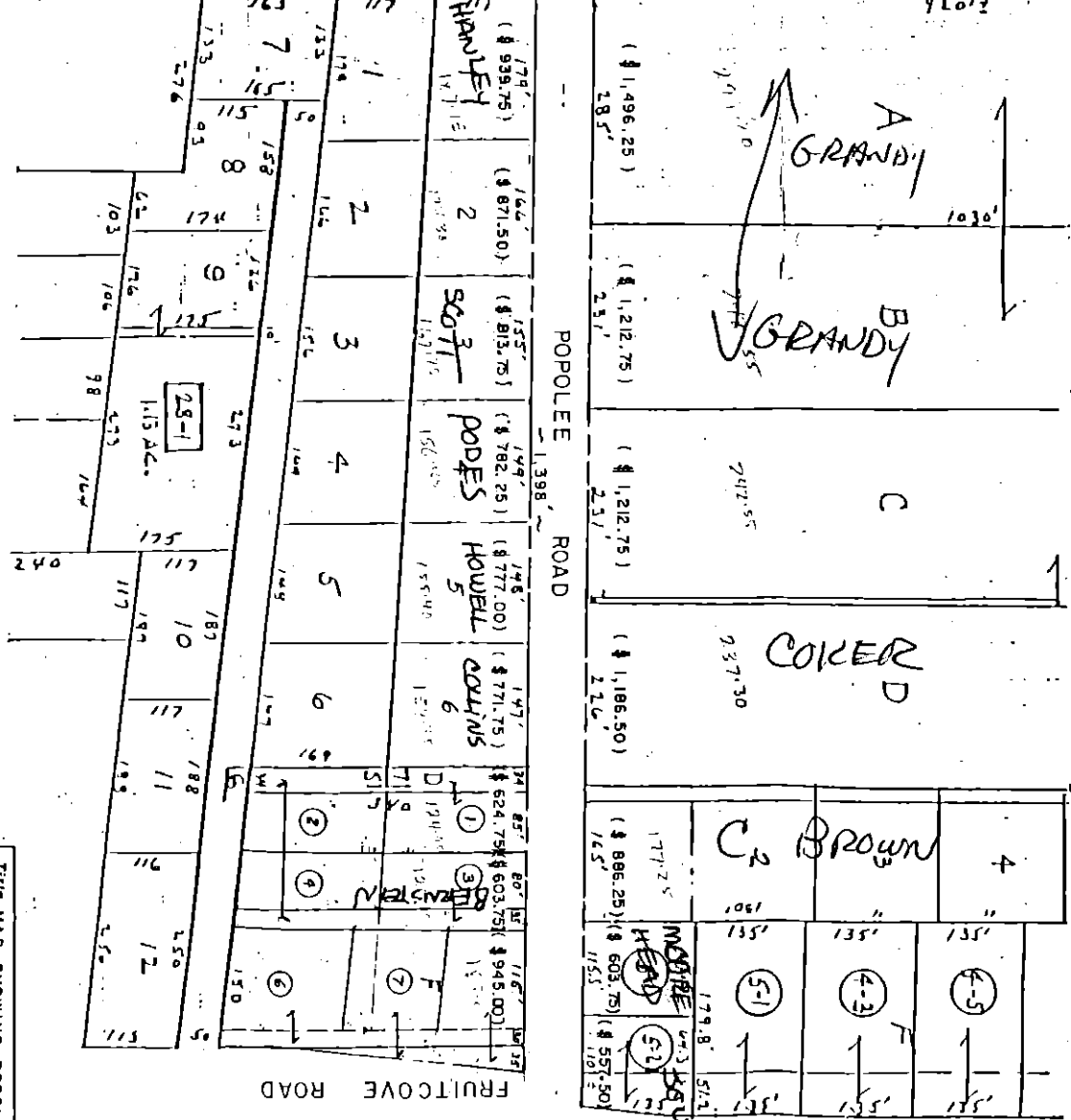
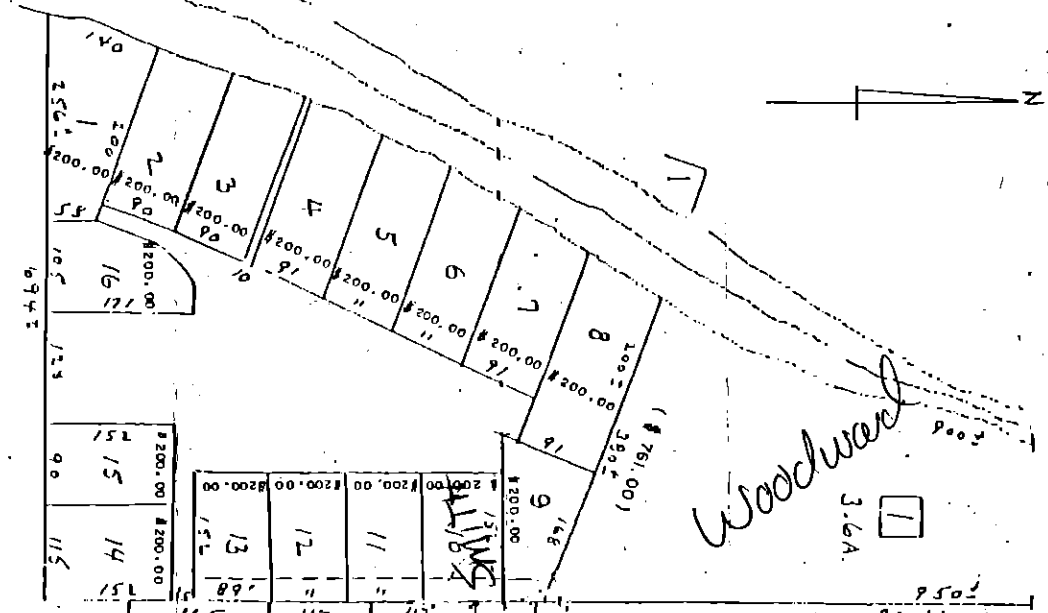
BOARD OF COUNTY COMMISSIONERS
OF ST. JOHNS COUNTY, FLORIDA

BY: Francis N. Brubaker
Its Chairman

Attest: Carl "Bud" Markel, Clerk

By: Cheryl Kent
Deputy Clerk

18.K



Title MAP SHOWING POPOLEE ROAD PRELIMINARY ASSESSMENTS FOR ROAD CONSTRUCTION

ENGINEERING DEPARTMENT
 St. Johns County, Florida
 Date 7/24/82

Designed by G. K.
 Drawn by G. K.
 Revised by _____
 Checked by _____
 Approved by _____

Scale: _____
 Drawing No. _____
 File No. _____
 Sheet No. L of L Sheets