

RESOLUTION NO. 86-155

RESOLVED, that the Board of County Commissioners of St. Johns County, Florida, in the County Auditorium of the St. Johns County Administration Building, on November 25, , 1986, at 9:35 o'clock a.m. upon petition of qualified land owners, will consider the advisability of exercising the power granted to it by Section 336.09, Florida Statutes 1981, and determine whether it will vacate, abandon, discontinue and close portions of certain streets, alleyways or roads described as follows:

Orange Avenue from the Westerly Right-of-Way line of State Road A1A running Westerly to the Westerly line of Seminole Avenue (as reflected on the plat of Biera Mar, Plat Book 3, page 69, St. Johns County current public records).

and the notice required by Section 336.10, Florida Statutes 1981, is hereby authorized and directed to be published.

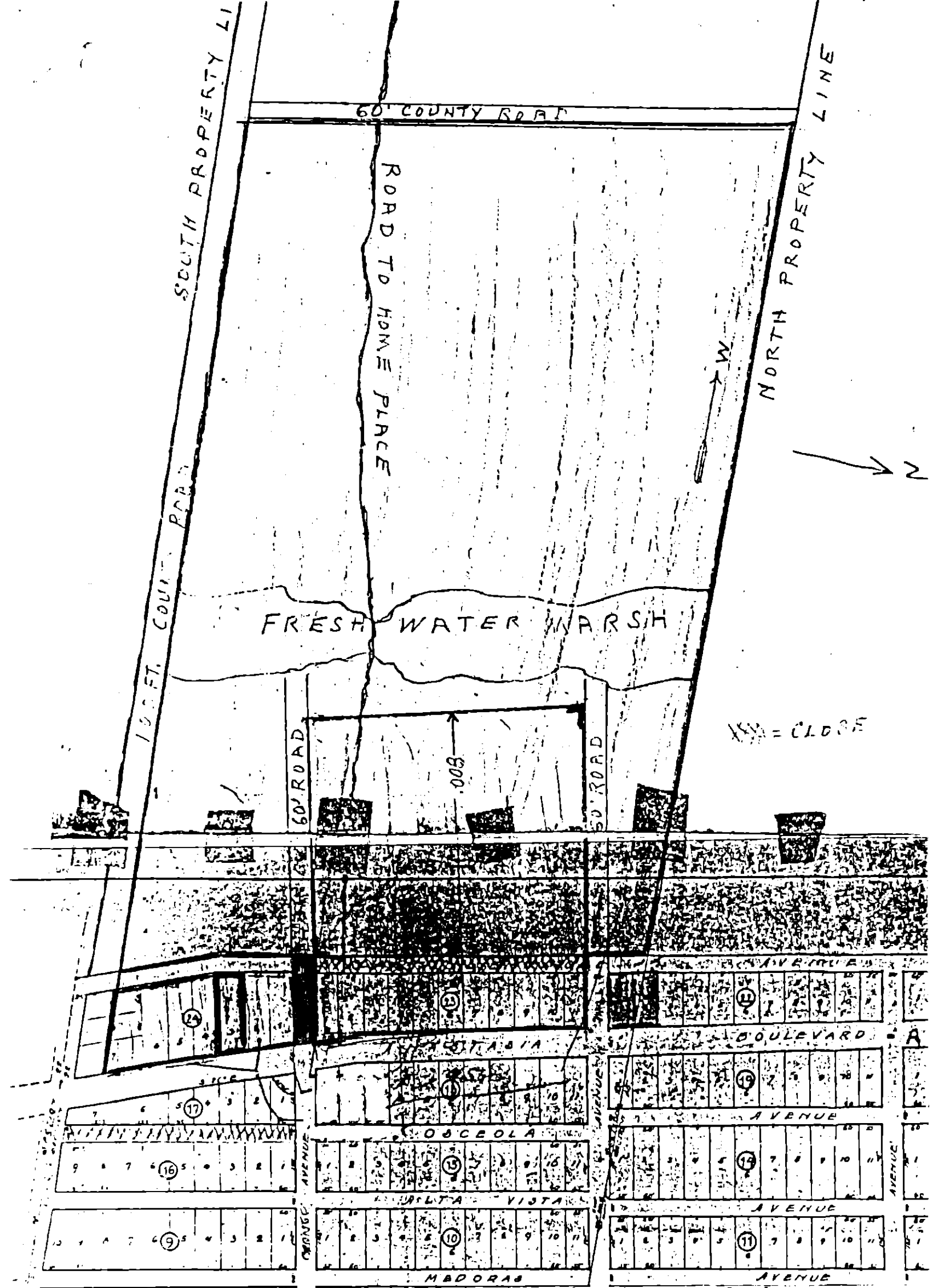
ADOPTED this 28 day of October, 1986

BOARD OF COUNTY COMMISSIONERS
OF ST. JOHNS COUNTY, FLORIDA

By: Francis M. Dubler
Chairman

ATTEST: CARL "BUD" MARKEL, CLERK

By: Cheryl Kent
Deputy Clerk



Portion of Orange Avenue proposed to be closed
 Orange Avenue from the Westerly Right-of-Way
 line of State Road A1A running Westerly to
 the Westerly line of Seminole Avenue (as re-
 flected on the plat of Biera Mar, Plat Book 3,
 page 69, St. Johns County current public records).