

RESOLUTION NO. 87-125

RESOLVED, that the Board of County Commissioners of St. Johns County, Florida, in the County Auditorium of the St. Johns County Administration Building, on July 14, , 1987 , at 9:55 o'clock a.m. upon petition of qualified land owners, will consider the advisability of exercising the power granted to it by Section 336.09, Florida Statutes 1985, and determine whether it will vacate, abandon, discontinue and close portions of certain streets, alleyways or roads described as follows:

All that portion of Palmetto Avenue lying between Fourth Street and the bulkhead line and located between Lot 9 Block L and Lot 1 Block U according to plat of Unit "A" of Surfside Subdivision, Mapbook 4, Page 32, Public Records of St. Johns County, Florida.

and the notice required by Section 336.10, Florida Statutes 1985, is hereby authorized and directed to be published.

ADOPTED this 23 day of June , 19 87 .

BOARD OF COUNTY COMMISSIONERS
OF ST. JOHNS COUNTY, FLORIDA

By: Phyllis L. Lydon
Chairman

ATTEST: CARL "BUD" MARKEL, CLERK

By: Cheryl Kent
Deputy Clerk

DESCRIPTION

All of Section 4 and lot 2 of Sec 5, Twp 7 S, R 17 W

STMP No. 110-1170
COUNTY OF ST. LOUIS

DEDICATION

SUBSIDIARY THE MARIANO COMPANY A COMPANY ORGANIZED UNDER THE LAWS OF THE STATE OF MISSOURI, HAS HEREBY DEDICATED AND CONVEYED TO THE PUBLIC ALL OF THE STREETS AND ALLEYS SHOWN ON THE ATTACHED MAP AND PLAN, THE PURPOSE OF WHICH IS TO PROVIDE FOR THE CONVENIENCE AND BENEFIT OF THE PUBLIC IN THE USE OF SAID STREETS AND ALLEYS FOR RESIDENTIAL AND COMMERCIAL PURPOSES.

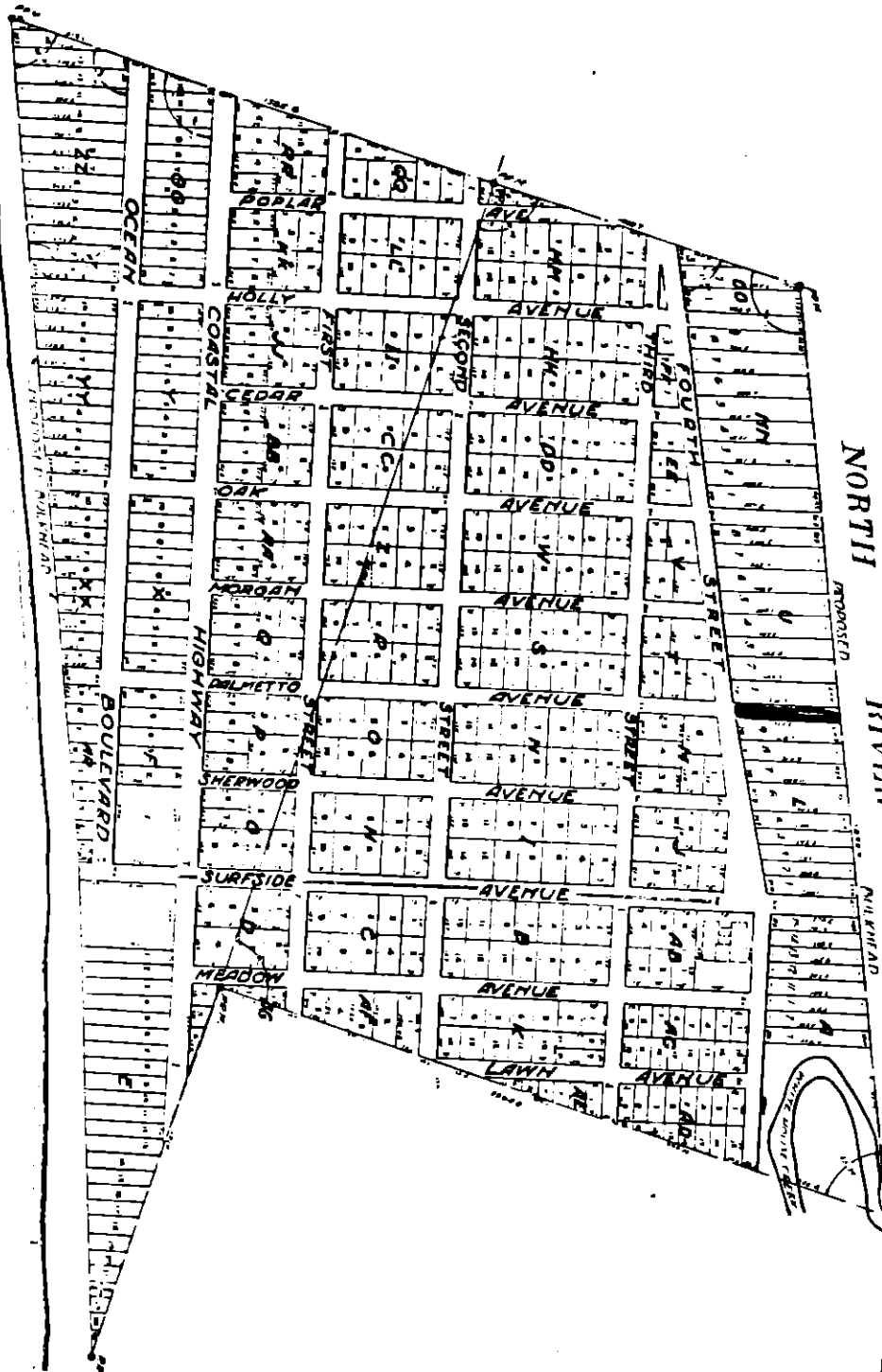
In Witness Whereof, the undersigned, Secretary and Treasurer, have hereunto set their hands and seals at St. Louis, Missouri, this 10th day of December, 1918.

WITNESSES:
W. H. ...
Anna M. ...

W. H. ...
Secretary

Filed for record in this County, Missouri, December 10, 1918.

W. H. ...
Secretary



**UNIT X OF
SURFSIDE**
OF
ST AUGUSTINE FLA.
OWNED BY
THE MARIANO COMPANY
THOMAS D. ADAMS, TEXAS

This is a revision of and supplements the original plat recorded March 17th 1915 and showing a total of 100 lots of land containing 100 acres and 1/2 of section 5, 1/2 S. 17 W. and is a correct duplicate of same except for the addition of 10 lots at the NW corner of the plat.

ATLANTIC OCEAN

FRONT ELEVATION
Showing the location of the front elevation and the proposed improvements to be made thereon.

1918