

A RESOLUTION OF THE BOARD OF COUNTY COMMISSIONERS OF ST. JOHNS COUNTY, FLORIDA REQUESTING THE ST. JOHNS COUNTY PROPERTY APPRAISER TO TAKE THE NECESSARY ACTION TO INCLUDE THE APPRAISED VALUE OF THE ATTACHED "PHASE I OF THE INNLET AT PONTE VEDRA" IN THE MUNICIPAL SERVICE DISTRICT OF PONTE VEDRA BEACH FOR THE FISCAL YEAR 1986-87.

WHEREAS, St. Johns County received a copy of Municipal Service District Resolution 87-16; and

WHEREAS, the Board of County Commissioners of St. Johns County received the letter from the St. Johns County Supervisor of Elections dated July 20, 1987, a copy being attached hereto

NOW THEREFORE, BE IT RESOLVED BY THE Board of County Commissioners of St. Johns County, Florida this 28 day of July, 1987, that the St. Johns County Property Appraiser is hereby requested to take the necessary action to include the appraised value of "Phase I of The Innlet at Ponte Vedra" (as described in attached Exhibit A - Survey - Phase I and Legal) in the Municipal Service District of Ponte Vedra Beach for the fiscal year 1986-87.

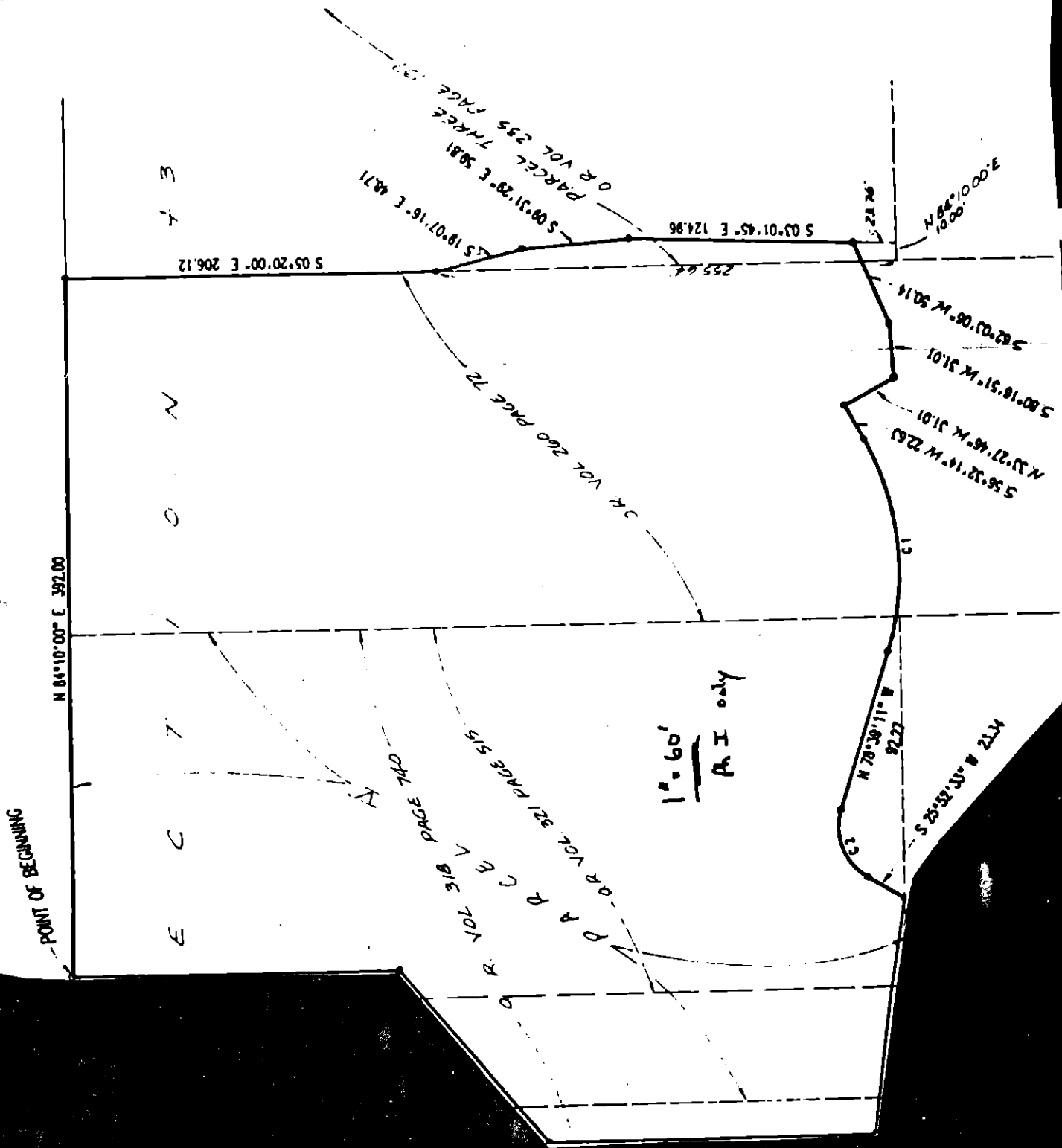
BOARD OF COUNTY COMMISSIONERS  
OF ST. JOHNS COUNTY, FLORIDA

BY: Phyllis L. Lydon  
Its Chairman

ATTEST: CARL "BUD" MARKEL, CLERK

By: Cheryl Kent  
Deputy Clerk

# Survey - Phase I AND LEGAL EXHIBIT A



# MAP OF R E

A PART OF THE PHILIP SOLANA GRANT, SECTION 43, TOWNSHIP 3 SOUTH, RANGE 29 EAST, ST. JOHNS COUNTY, FLORIDA, MORE PARTICULARLY DESCRIBED AS FOLLOWS: FOR A POINT OF REFERENCE COMMENCE AT THE NORTHWEST CORNER OF SAID SECTION 43; THENCE N.84°10'00"E., ALONG THE NORTH LINE OF SAID SECTION 43, A DISTANCE OF 921.80 FEET TO THE POINT OF BEGINNING; THENCE CONTINUE N.84°10'00"E., ALONG SAID NORTH LINE OF SECTION 43, A DISTANCE OF 392.00 FEET; THENCE S.05°20'00"E., ALONG THE WEST LINE OF PARCEL THREE, AS DESCRIBED IN OFFICIAL RECORDS VOLUME 235, PAGE 737 OF THE PUBLIC RECORDS OF SAID COUNTY, A DISTANCE OF 206.12 FEET; THENCE S.19°07'16"E. A DISTANCE OF 48.71 FEET; THENCE S.09°31'29"E. A DISTANCE OF 59.81 FEET; THENCE S.03°01'45"E. A DISTANCE OF 124.96 FEET; THENCE S.62°03'06"W. A DISTANCE OF 50.14 FEET; THENCE S.80°16'51"W. A DISTANCE OF 31.01 FEET; THENCE N.33°27'46"W. A DISTANCE OF 31.01 FEET; THENCE S.56°32'14"W. A DISTANCE OF 22.63 FEET TO THE POINT OF CURVE OF A CURVE CONCAVE NORTHWESTERLY HAVING A RADIUS OF 156.62 FEET; THENCE SOUTHWESTERLY ALONG THE ARC OF SAID CURVE, A CHORD BEARING OF S.78°56'32"W. A DISTANCE OF 92.27 FEET TO THE POINT OF TANGENCY OF SAID CURVE; THENCE N.78°39'11"W. A DISTANCE OF 33.32 FEET; THENCE SOUTHWESTERLY ALONG THE ARC OF SAID CURVE, A CHORD BEARING OF S.63°36'41"W. AND A CHORD DISTANCE OF 40.78 FEET TO THE POINT OF TANGENCY OF SAID CURVE; THENCE S.25°52'33"W. A DISTANCE OF 23.34 FEET; THENCE N.88°01'03"W. A DISTANCE OF 132.91 FEET; THENCE N.05°20'00"W. A DISTANCE OF 180.72 FEET; THENCE N.44°47'18"E. A DISTANCE OF 127.70 FEET; THENCE N.05°20'00"W. A DISTANCE OF 180.00 FEET TO THE POINT OF BEGINNING. CONTAINING 4.60 ACRES MORE OR LESS.

POINT OF BEGINNING

N 84°10'00" E 392.00

0 N 27

Phase II - Legal

July 20, 1987

Board of County Commissioners  
Attn: Phyllis Lydon, Chairman  
P. O. Box 349  
St. Augustine, Florida 32084

RE: 1986 election concerning  
expansion of the Municipal  
Service District of Ponte  
Vedra Beach

Dear County Commissioners:

I have been requested by a member of the Municipal Service District of Ponte Vedra Beach to provide you information concerning the above referenced election.

On NOVEMBER 4, 1986, an election was held to determine whether certain lands would be added to the Municipal Service District of Ponte Vedra Beach. Please be advised of the following:

a) Two separate groups of people were allowed to vote on the issue.

For convenience these groups will be referred to herein as Group I and Group II.

b) Persons allowed to vote in Group I consisted of all electors - and only those electors - whose current St. Johns County voting records indicated that they were residents of St. Johns County within the area described on attached Exhibit A.

c) Persons allowed to vote in Group II consisted of all electors - and only those electors - whose current St. Johns County voting records indicated that they were residents of St. Johns County within the boundaries of the then existing Municipal Service District of Ponte Vedra Beach.

d) A majority of the electors in Group I who voted on the above described issue voted to expand the boundaries of the Municipal Service District of Ponte Vedra Beach.

e) A majority of the electors in Group II who voted on the above described issue voted to expand the boundaries

1986 election concerning expansion  
of the Municipal Service District  
of Ponte Vedra Beach  
Page Two

of the Municipal Service District of Ponte Vedra Beach.

If you need any additional information concerning the above  
referenced election, please advise and I shall endeavor to respond.

Sincerely,



Penny Halyburton  
Supervisor of Elections

