

RESOLUTION NO. 87-18

RESOLVED, that the Board of County Commissioners of St. Johns County, Florida, in the County Auditorium of the St. Johns County Administration Building, on February 24, , 1987 , at 9:40 o'clock a.m. upon petition of qualified land owners, will consider the advisability of exercising the power granted to it by Section 336.09, Florida Statutes 1981, and determine whether it will vacate, abandon, discontinue and close portions of certain streets, alleyways or roads described as follows:

Portion of road right-of-way located southeast corner of intersection U.S.#1 South/St. Augustine Drive at entrance to St. Augustine South Subdivision.

Legal description as per attached SCHEDULE "A" and the notice required by Section 336.10, Florida Statutes 1981, is hereby authorized and directed to be published.

ADOPTED this 27 day of January , 1987 .

BOARD OF COUNTY COMMISSIONERS
OF ST. JOHNS COUNTY, FLORIDA

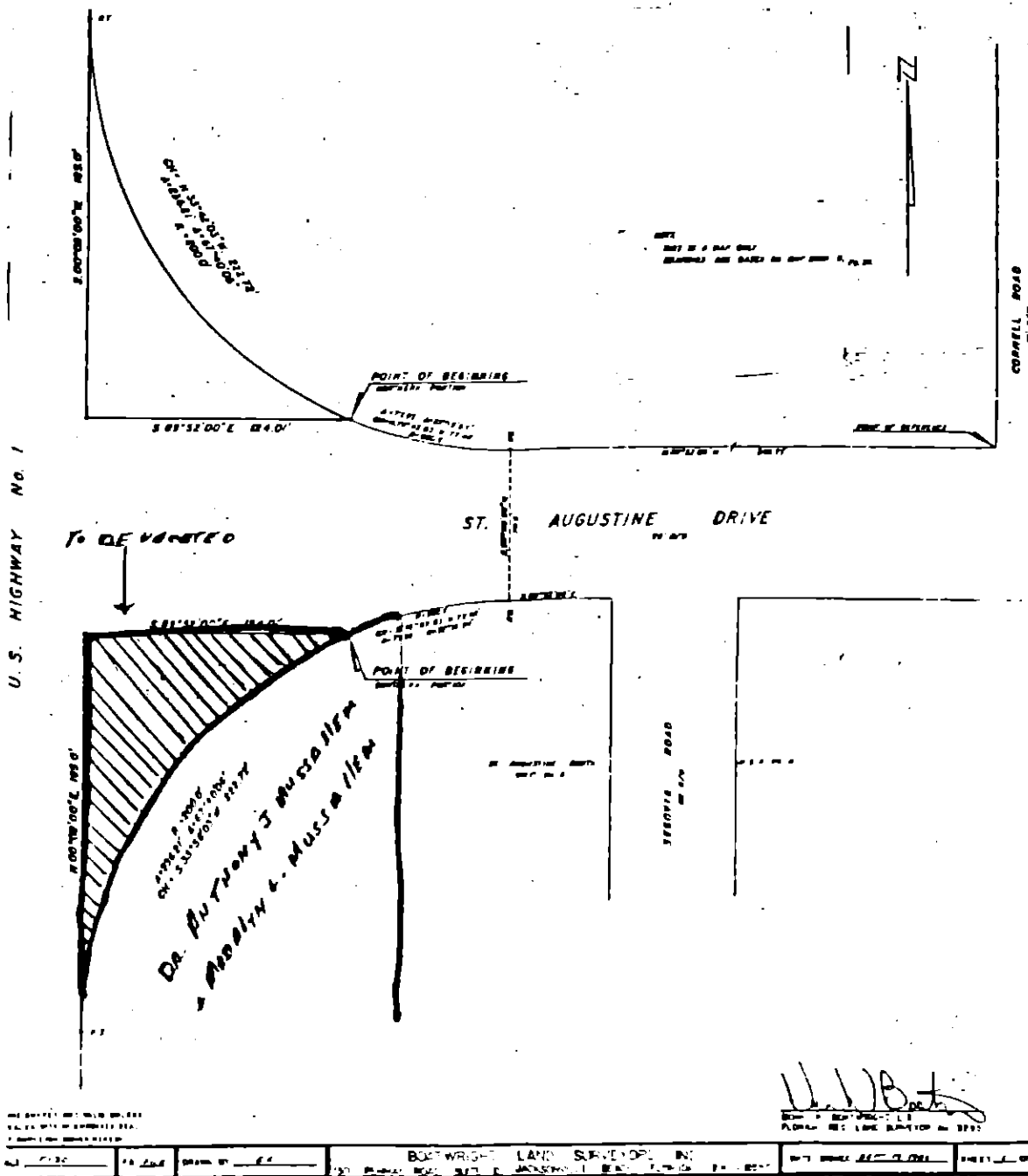
By: Phyllis L. Lydon
Chairman

ATTEST: CARL "BUD" MARKEL, CLERK

By: Cheryl Kent
Deputy Clerk

SOUTHERN PORTION

A PART OF ST. AUGUSTINE DRIVE, AS SHOWN ON PLAT OF ST. AUGUSTINE SOUTH UNIT NO. 4, AS RECORDED IN MAP BOOK 8, PAGE 36 OF THE PUBLIC RECORDS OF ST. JOHNS COUNTY, FLORIDA, BEING MORE PARTICULARLY DESCRIBED AS FOLLOWS; FOR A POINT OF REFERENCE COMMENCE AT THE INTERSECTION OF THE WESTERLY RIGHT-OF-WAY LINE OF CORNELL ROAD (A 60 FOOT RIGHT-OF-WAY AS NOW ESTABLISHED) WITH THE NORTHERLY RIGHT-OF-WAY LINE OF SAID ST. AUGUSTINE DRIVE (70 FOOT RIGHT-OF-WAY AS NOW ESTABLISHED). THENCE NORTH 89°52'00" WEST, ALONG SAID NORTHERLY RIGHT-OF-WAY LINE OF ST. AUGUSTINE DRIVE. A DISTANCE OF 348.72 FEET; THENCE SOUTH 00°08'00" WEST, A DISTANCE OF 70.0 FEET TO THE POINT OF CURVATURE OF A CURVE CONCAVE TO THE SOUTHEAST HAVING A RADIUS OF 200.0 FEET; THENCE SOUTHWESTERLY ALONG THE ARC OF SAID CURVE AND ALONG THE SOUTHERLY RIGHT-OF-WAY LINE OF SAID ST. AUGUSTINE DRIVE, A DISTANCE OF 77.95 FEET, MAKING A CENTRAL ANGLE OF 22°19'54" AND HAVING A CHORD BEARING OF SOUTH 78°58'03" WEST AND A CHORD DISTANCE OF 77.46 FEET THE POINT OF BEGINNING; THENCE CONTINUE SOUTHWESTERLY, ALONG SAID SOUTHERLY RIGHT-OF-WAY LINE AND ALONG THE ARC OF SAID CURVE, A DISTANCE OF 236.21 FEET, MAKING A CENTRAL ANGLE OF 67°40'06" AND HAVING A CHORD BEARING OF SOUTH 33°58'03" WEST, AND A CHORD DISTANCE OF 222.72 FEET TO THE POINT OF TANGENCY OF SAID CURVE; THENCE NORTH 00°08'00" EAST, ALONG THE EASTERLY RIGHT-OF-WAY LINE OF U.S. HIGHWAY NO. 1, AS NOW ESTABLISHED, A DISTANCE OF 185.0 FEET; THENCE SOUTH 89°52'00" EAST, A DISTANCE OF 124.01 FEET TO THE POINT OF BEGINNING. CONTAINING 0.15 ACRES OR 6350 SQUARE FEET MORE OR LESS.



DATE	BY	SCALE	BY	DATE

BOWWRIGHT LAND SURVEYORS, INC.
 200 W. BAY STREET, JACKSONVILLE, FLORIDA 32202