

RESOLUTION OF THE BOARD OF COUNTY COMMISSIONERS OF ST. JOHNS COUNTY STATE OF FLORIDA, APPROVING THE FINAL DEVELOPMENT PLAN OF UNITY CHURCH FOR CREATIVE LIVING, LOCATED WITHIN THE JULINGTON CREEK PUD.

BE IT RESOLVED BY THE BOARD OF COUNTY COMMISSIONERS OF ST. JOHNS COUNTY, STATE OF FLORIDA:

Section 1: Pursuant to a letter of request (Exhibit A) dated June 6, 1988, submitted by Unity Church for Creative Living, in accordance with Section 8-3 of the St. Johns County zoning ordinance, and subsequent review and approval by the Board of County Commissioners of St. Johns County, the Final Development Plan attached hereto as Exhibit C, is hereby approved, in reliance upon and in accordance with representations and statements made in written submission, attached hereto as Exhibits A, B, C, D, and *letter dated 7-15-88.*

Section 2: All attachments included herein are incorporated herein and made a part of the adopting Resolution.

Section 3: All building code, zoning ordinance, and other land use and development regulations of St. Johns County, as may be amended from time to time shall be applicable to this development except those permitting variances and special exceptions and except to the extent that they conflict with specific provisions of the approved development plans by variance or special exception shall be prohibited.

Section 4: St. Johns County Building Official is hereby authorized to issue construction permits on the herein lands in accordance with approved plans, provided all requirements are met.

↳ plan. Modification to approved development

BOARD OF COUNTY COMMISSIONERS
ST. JOHNS COUNTY, FLORIDA

BY *Laurance O. Hartley*
Chairman

Carl "Bud" Markel, Clerk

ATTEST: *Ann M. McDonald*
Deputy Clerk

Date: August 9, 1988



MINISTERS: JOHN R. & MARLEEN F. DAVIS
Post Office Box 2335, Orange Park, Florida 32067-2335
(904) 269-1701 • Dial-A-Prayer (904) 269-1771

June 6, 1988

Exhibit A

Board of County Commissioners
St. Johns County, State of Florida

Dear County Commissioners:

Re: Approval of the Final Development Plan
of Unity Church for Creative Living,
located within the Julington Creek PUD

We are submitting for your approval our Final Development Plan, specifically the First Phase, Multipurpose Building and Parking.

Please disregard all documents submitted under the date of March 10, 1988, as this was our initial submission and now has been revised.

Attached for your review are the following exhibits:

- A. Cover Letter
- B. Plat Map of Property
- C. Master Site Plan
- D. Landscape Design
- E. Text

Unity Church for Creative Living respectfully requests your consideration of approval of our Final Development Plan.

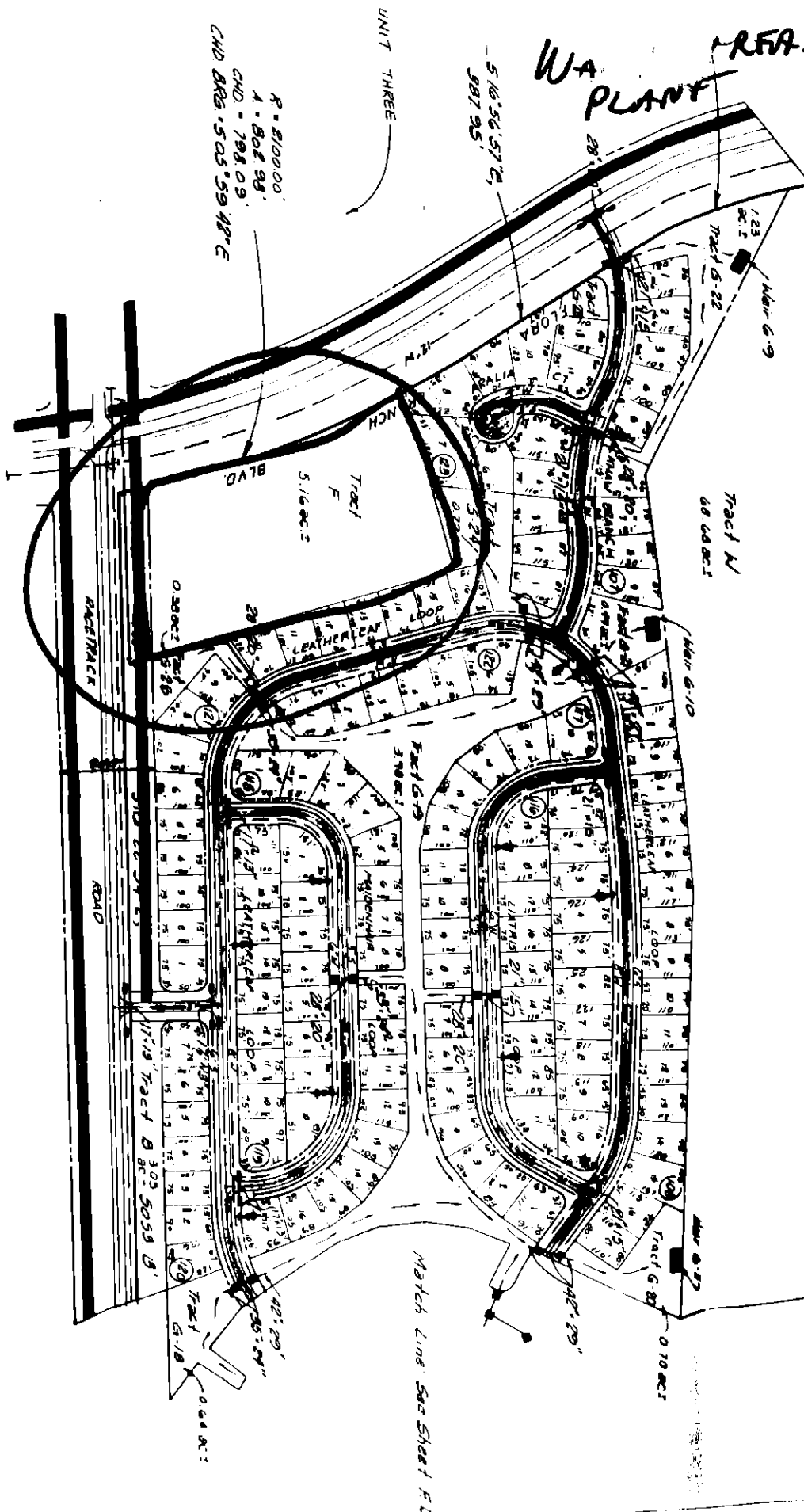
Very truly yours,

John R. Davis, Minister
Board of Directors

JRD/m

WATER TREATMENT PLANT

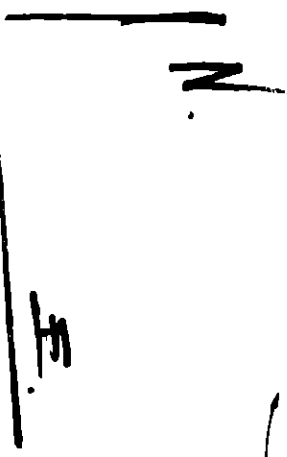
EXHIBIT B.



UNIT THREE

UNIT ELEVEN

R = 8100.00'
 A = 802.98'
 CHD = 798.09'
 CHD BRG = 52.5° 59' 42" E



Match Line See Sheet F D

JULINGTON

ST. JOHN'S
 ENGINEERING
 1014



**UNITY CHURCH FOR
CREATIVE LIVING**

MINISTERS: JOHN R. & MARLEEN F. DAVIS
Post Office Box 2335, Orange Park, Florida 32067-2335
(904) 269-1701 • Dial-A-Prayer (904) 269-1771

June 6, 1988

Exhibit **D**

TEXT for PHASE 1 of PUD

Unity Church for Creative Living proposes to develop 5.16 acres, currently designated as Tract F, Julington Creek, Unit 4 South, Range 27 East, St. Johns County, Florida.

This property will be developed as a non-profit religious facility.

We propose to construct in 1988 Phase 1, a multipurpose building with parking to accommodate 150 people, and later, as the congregation dictates, a classroom building and sanctuary. Phase 1 is designated in Exhibit C, Master Site Plan, in solid lines.

The septic tank and drainfield will be abandoned when General Development Corporation provides sewer service.

It is proposed that a lighted sign, approximately 30 square feet and not higher than 20 feet above grade level, be located in the south end of Retention Pond No. 2.

A temporary entrance and sign to be located 15 feet from Racetrack Road will be constructed and upon the dedication of Flora Branch Road be rendered non-functional upon review by St. Johns County in eight years from completion of Phase 1.

The eastern border of the 5.16 acres will be fenced (6 feet high) when the first family residence is established in adjacent building sites. This to be reviewed by St. Johns County five years from completion of Phase 1.

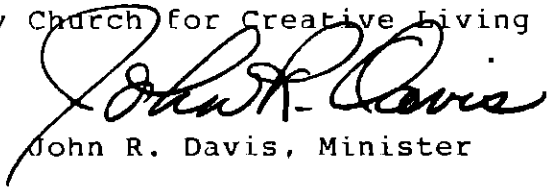
We propose to locate a temporary construction trailer on the property while construction is in progress.

Landscaping will be in accordance to St. Johns County Landscaping Ordinance.

All future uses and phases will be required to receive additional PUD approval.

BOARD OF DIRECTORS

Unity Church for Creative Living



John R. Davis, Minister

Member of the Association of Unity Churches and affiliated with Unity School of Christianity



**UNITY CHURCH FOR
CREATIVE LIVING**

MINISTERS: JOHN R. & MARLEEN F. DAVIS
Post Office Box 2335, Orange Park, Florida 32067-2335
(904) 269-1701 • Dial-A-Prayer (904) 269-1771

July 15, 1988

St. Johns County
P.O. Box 349
St. Augustine, Florida 32085

Atten: Betty Sue Solana

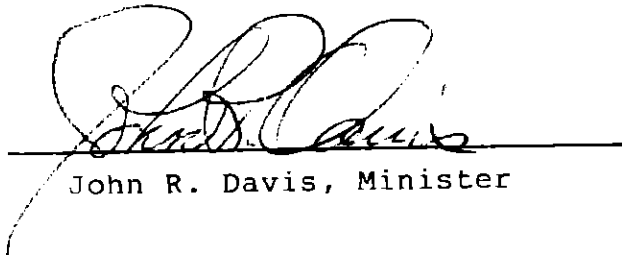
Dear Betty,

In reference to the recommendations outline in your letter of July, 1988, please find enclosed revised Final Development Plan with the addition of fire hydrant and increased depth of retention ponds 3 and 4.

Please be assured that our temporary access on Racetrack Road will be to County satisfaction and will be rendered non-functional on or before completion of permanent driveway on Flora Branch.

The church sign will be placed 15 feet from the right-of-way. Also find enclosed a copy of permit issued by the St. Johns River Water Management District, engineer's calculations and diagram of proposed fire hydrant.

Very Truly Yours



John R. Davis, Minister