

RESOLUTION NO. 88-264

WHEREAS, St. Johns County has received a request by Mrs. Mitchell to place a driveway on County Right of Way named Cypress Boulevard West.

NOW, THEREFORE, BE IT RESOLVED, that the St. Johns County Board of County Commissioners hereby grants the owner of the following described property: Lots 7, 8 and 9, Block 8, St. Augustine Park Subdivision, permission to: Use an existing dirt drive located within County owned Right of Way known as Cypress Drive West and Flagler Boulevard:

Subject to the following conditions:

1. This right of use is non-exclusive.
2. The single family driveway within County Right of Way must be privately maintained by the homeowner at all times. St. Johns County will assume no responsibility for maintenance of this use.
3. The owner of the above described property and any future owners must remove and/or relocate the driveway at their expense at the County's request at any time in the future.

ADOPTED THIS 27th day of September, 1988, by the St. Johns County Board of County Commissioners.

BOARD OF COUNTY COMMISSIONERS  
OF ST. JOHNS COUNTY, FLORIDA

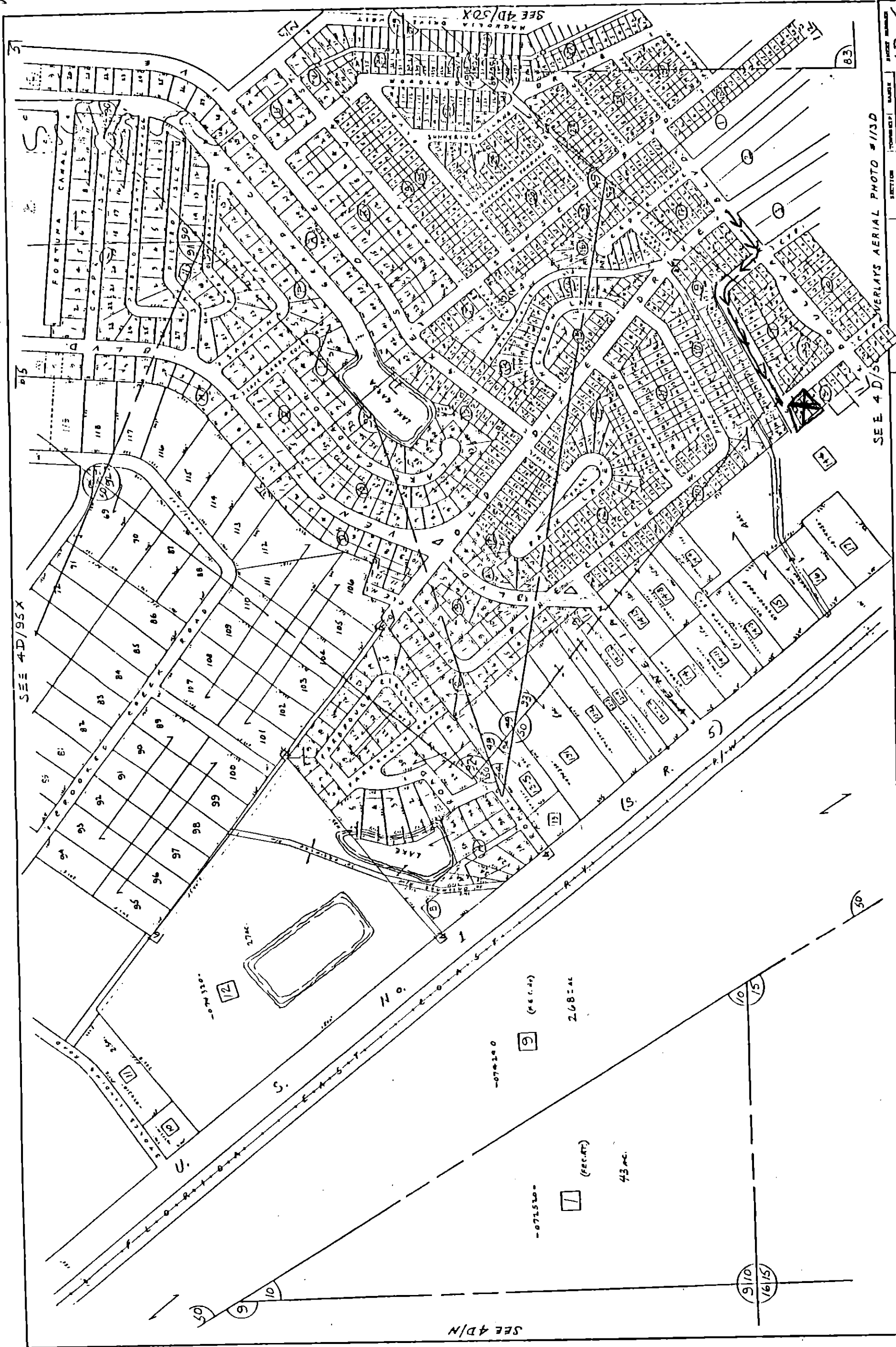
BY Lawrence O. Hartley  
Its Chairman

ATTEST: CARL "BUD" MARKEL, CLERK

BY Lynn M. McDonald  
Deputy Clerk

Agenda #11

11200



SEE 4D/95X

SEE 4D/N

SEE 4D/50X

OVERLAYS AERIAL PHOTO #1130

SECTION: 10 49 50, 61 65 6S 29E 4D 50A

ST. JOHNS COUNTY, FLORIDA

OFFICE OF PROPERTY APPRAISAL

SCALE: 1" = 200'

THIS MAP IS FOR ASSESSMENT PURPOSES ONLY. THE PROPERTY APPRAISER ASSUMES NO LIABILITY FOR THE ACCURACY OF THE INFORMATION HEREON.

275

INDEX

GRANT

49 ALBERTSON & J. CURTIS

50 F. W. BIRD, SHERMAN & CURTIS

51 ALBERTSON & J. CURTIS

52 CURTIS & ALBERTSON

53 CURTIS & ALBERTSON

54 ALBERTSON & J. CURTIS

55 ALBERTSON & J. CURTIS

SUBDIVISION INDEX

1 ST. AUGUSTINE PARK - UNIT 1 (LOTS 2-7)

2 ST. AUGUSTINE PARK - UNIT 2 (LOTS 8, 9, 10, 11)

3 ST. AUGUSTINE PARK - UNIT 3 (LOTS 12, 13, 14, 15)

4 NORTH DIXIE VILLAGE

5 PINEHURST VILLAGE (LOTS 16-21, 22-27)

6 SANDY PINES (LOTS 28-31, 32-35)