

89 20118 |

RESOLUTION NO. 89-177

A RESOLUTION OF THE BOARD OF COUNTY COMMISSIONERS OF ST. JOHNS COUNTY, FLORIDA OF NOTICE OF INTENT TO ASSESS PROPERTIES BENEFITTED BY ROAD IMPROVEMENTS ON CALLE CORTEZ IN PARQUE AVILES SUB UNDER COST SHARING PROGRAM.

WHEREAS, the Board of County Commissioners of St. Johns County, Florida adopted Ordinance No. 76-21 as amended by Ordinance No. 87-42, known as "The St. Johns County Road Improvement Assessment Ordinance;" and

WHEREAS, said ordinance authorizes placement of assessments against properties for road improvements.

NOW THEREFORE BE IT RESOLVED by the Board of County Commissioners of St. Johns County, Florida that notice is hereby given that consideration is being given to assess properties described in Exhibit A for road improvements on Calle Cortez in Parque Aviles Sub that benefits said properties and that the Clerk is instructed to record this Resolution in the Official Public Records of St. Johns County.

PASSED AND ADOPTED this 8th day of August, 198

BOARD OF COUNTY COMMISSIONERS OF ST. JOHNS COUNTY, FLORIDA

By: [Signature]
Chairman

ATTEST: CARL "BUD" MARKEL, CLERK

By: [Signature]
Deputy Clerk

AS COMPILED FROM CURRENT (1988) TAX ROLL-

LIST OF OWNERS WHOSE PROPERTY ABUTS

CALLE CORTEZ

IN PARQUE AVILES SUBDIVISION MB 3 PG 139

Sandra M. Meserve P. O. Box 52 St. Augustine, Fla. 32085-0052	SEC 6 TWP 8 RGE 30 173480-0000 3-139 PARQUE AVILES LOT 1 BLK E OR563/340
Jack & Jenise M. Robinett 3201 Calle Cortez St. Augustine, Fla. 32086	SEC 6 TWP 8 RGE 30 173490-0000 3-139 PARQUE AVILES LOT 2 BLK E OR706/1018
A H & F Properties, Inc. (Former Owner) 508 St. Augustine South Drive St. Augustine, Fla. 32086	SEC 6 TWP 8 RGE 30 173490-0030 3-139 PARQUE AVILES LOT 3 BLK E OR783/812
(New Owner subsequent to 1988 Tax Roll: Catherine T. Gause 3213 Calle Cortez St. Augustine, Fla. 32086)	Per OR815/1759
Bettye E. Province 3225 Calle Cortez St. Augustine, Fla. 32086	SEC 6 TWP 8 RGE 30 173500-0000 3-139 PARQUE AVILES LOT 4 BLK E OR673/190
John Fredrickson, Sr. 3237 Calle Cortez St. Augustine, Fla. 32086	SEC 6 TWP 8 RGE 30 173500-0050 3-139 PARQUE AVILES LOT 5 BLK E OR580/120
Bryson Hendricks (Former Owner) 704 Aleida Drive St. Augustine, Fla. 32086	SEC 6 TWP 8 RGE 30 173500-0060 3-139 PARQUE AVILES LOT 6 BLK E OR784/128
(New Owners subsequent to 1988 Tax Roll: Charles O, Jr. and Martha F. Bruce 8000-A U.S. 1 South St. Augustine, Fla. 32086)	Per OR805/516
Ralph K. & Elizabeth J. Schultz 3253 Calle Cortez St. Augustine, Fla. 32086	SEC 6 TWP 8 RGE 30 173500-0070 3-139 PARQUE AVILES LOT 7 BLK E OR621/309
James M., Jr. & Terry L. Rimel 3265 Calle Cortez St. Augustine, Fla. 32086	SEC 6 TWP 8 RGE 30 173500-0080 3-139 PARQUE AVILES LOT 8 BLK E OR643/466
Michael D. Deane 3289 Calle Cortez St. Augustine, Fla. 32086	SEC 6 TWP 8 RGE 30 173500-0090 3-139 PARQUE AVILES LOT 9 BLK E OR465/630
Lawrence W. & Shirley A. Deane Calle Cortez 3289 St. Augustine, Fla. 32086	SEC 6 TWP 8 RGE 30 173500-0100 3-139 PARQUE AVILES LOT 10 BLK E OR465/631

CALLE CORTEZ (in Parque Aviles Subd.)

Charles G. & Evelyn R. Dzingoski
3299 Calle Cortez
St. Augustine, Fla. 32086

SEC 6 TWP 8 RGE 30 173500-0110
3-139 PARQUE AVILES LOT 11 BLK E
OR399/150

Bruce A. Toney
3298 Old Moultrie Road
St. Augustine, Fla. 32086

SEC 6 TWP 8 RGE 30 173500-0120
3-139 PARQUE AVILES LOT 12 BLK E
(Ex R/W Rd #S-5A DB234/180)
OR640/476

Pedro M. & Babina Diaz
188 Calle Madrid
St. Augustine, Fla. 32086

SEC 6 TWP 8 RGE 30 173540-0090
3-139 PARQUE AVILES LOT 9 BLK F
OR654/67

Walter Spiwak
3264 Calle Cortez
St. Augustine, Fla. 32086

SEC 6 TWP 8 RGE 30 173540-0100
3-139 PARQUE AVILES LOT 10 BLK F
OR588/277

Anthony J. & Lena E. Serusa
104 Lake Street
Leroy, N.Y. 14482-1029

SEC 6 TWP 8 RGE 30 173540-0110
3-139 PARQUE AVILES LOT 11 BLK F
OR595/578

Cecil K. & Letha A. Downing
3248 Calle Cortez
St. Augustine, Fla. 32086

SEC 6 TWP 8 RGE 30 173540-0120
3-139 PARQUE AVILES LOT 12 BLK F
OR554/294

James & Lesley M. McDade
3236 Calle Cortez
St. Augustine, Fla. 32086

SEC 6 TWP 8 RGE 30 173540-0130
3-139 PARQUE AVILES LOT 13 BLK F
OR552/662

Mary T. Gallina
3224 Calle Cortez
St. Augustine, Fla. 32086

SEC 6 TWP 8 RGE 30 173540-0140
3-139 PARQUE AVILES LOT 14 BLK F
OR680/827

Harold J. & Agnes A. Adams
901 S.W. 9th Ave.
Aledo, Ill. 61231-2355

SEC 6 TWP 8 RGE 30 173540-0150
3-139 PARQUE AVILES LOT 15 BLK F
OR547/418

Edward L. Burkhardt &
Debra K. Collard H/W
151 Creekside Drive
St. Augustine, Fla. 32086

SEC 6 TWP 8 RGE 30 173540-0160
3-139 PARQUE AVILES LOT 16 BLK F
OR696/1137

Patricia L. Hutson
1198 Romaine Circle E.
Jacksonville, Fla. 32225

SEC 6 TWP 8 RGE 30 173670-0130
3-139 PARQUE AVILES LOT 13 BLK J
OR503/641

THIS PARCEL of land may or may not exist as shown on map.

Map Book 3, Page 55 which originally platted Parque Aviles Unit 1, which included blocks A through E does not show this parcel.

Map Book 3, Page 139 which platted Parque Aviles Units 1 & 2, shows this parcel as a narrow strip 8 Ft wide at the western end, and 10 Ft. wide at the eastern end. The plat map also bears the notation "Proper width West End Calle Madrid 48 Feet", although the drawing shows a measurement of 40 Ft, next to the 8 Ft given as width of this parcel.

In 1979, according to the records of the property appraiser's office, parcel #173615-0000 was created, which may or may not apply to this parcel of land, as the description for that number on the tax roll states that the land lies West of Block F, whereas on the map, the strip of land in question lies to the west of Block J.

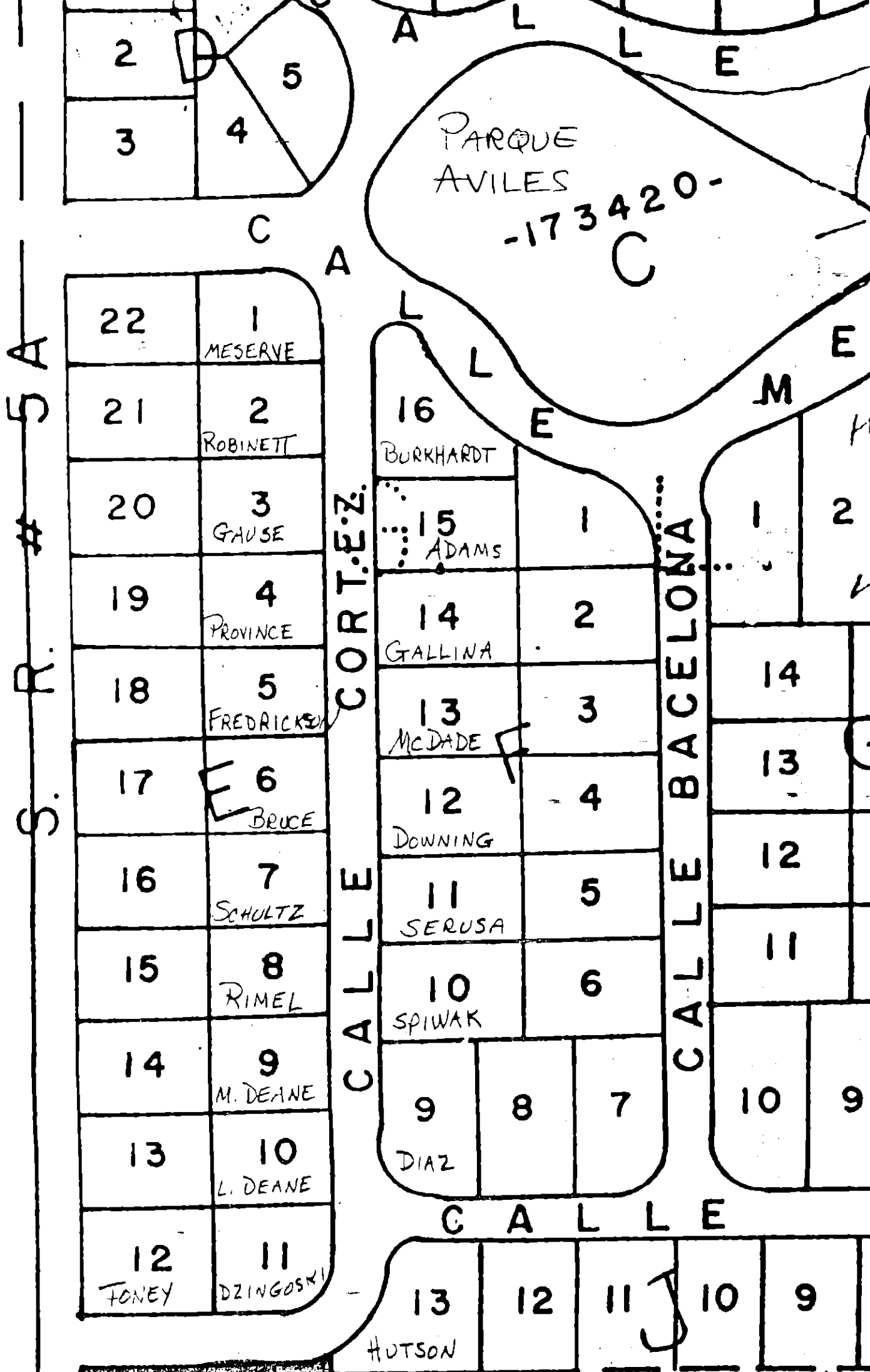
This parcel number, although it still appears on the tax roll, and last year incurred a tax bill of 90¢, which was paid in Nov., does not any longer appear on the property appraiser's assessment map.

Entry on the latest tax roll is as follows:

Tobin, Harold G-Trustee
800 West 42nd St. #1B
Miami Beach, Fla. 33140-2873

SEC 06 TWP 08 RGE 30 0173615-0000
3-139 Parque Aviles Strip of Land
Lying W of Blk F (Ex R/W Rd #S-5A)
DB240/597

The land which lies to the south of the strip of land in question is not a part of Parque Aviles Subdiv., but has parcel #173070 and is assessed to Robin Gay Johnson, 3330 Old Moultrie Road, St. Augustine, Fla. 32086.



22	1 MESERVE
21	2 ROBINETT
20	3 GAUSE
19	4 PROVINCE
18	5 FREDRICKSON
17	6 BRUCE
16	7 SCHULTZ
15	8 RIMEL
14	9 M. DEANE
13	10 L. DEANE
12	11 DZINGOSKI

16	BURKHARDT
15	ADAMS
14	GALLINA
13	MCDADE
12	DOWNING
11	SERUSA
10	SPIWAK
9	DIAZ

1	2
14	
13	
12	
11	
10	9

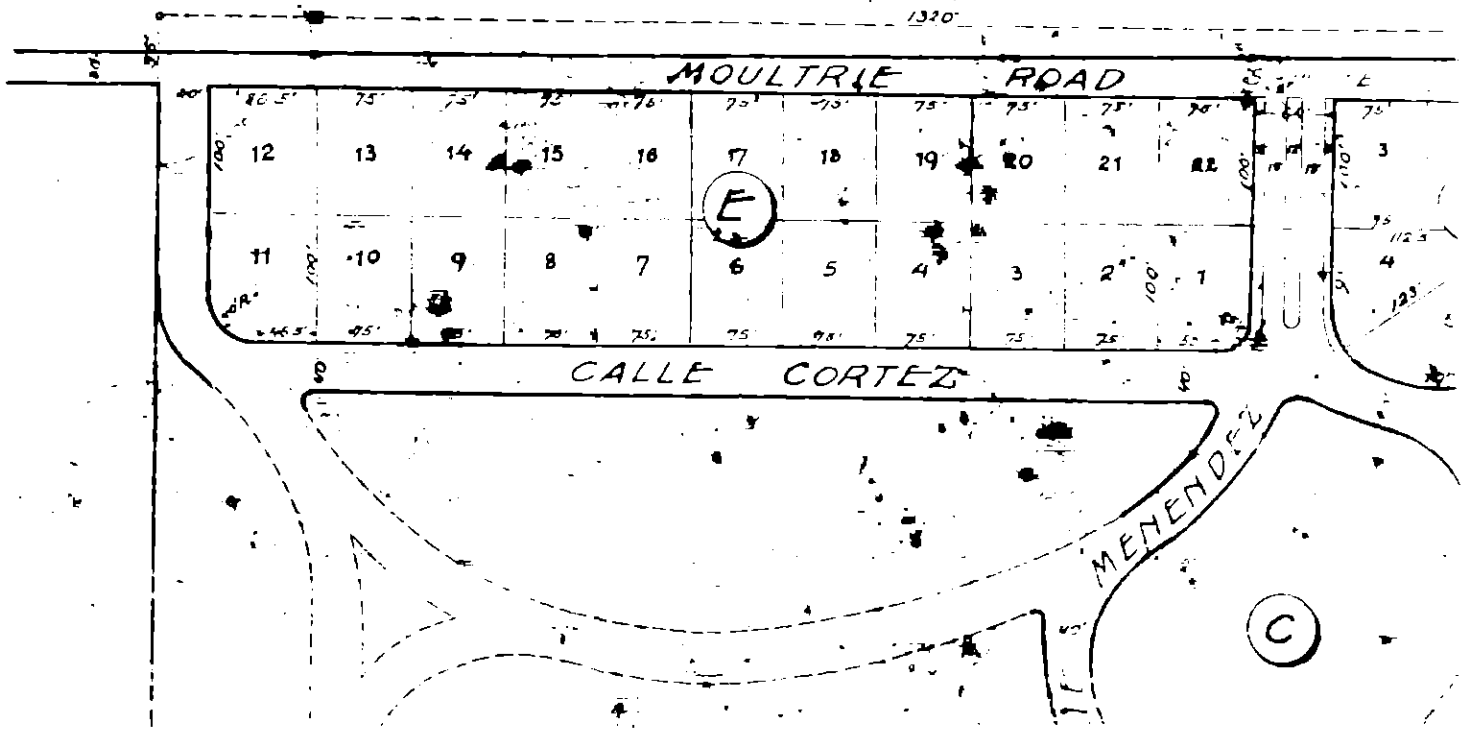
13	12	11	10	9
HUTSON				

SEE NOTE

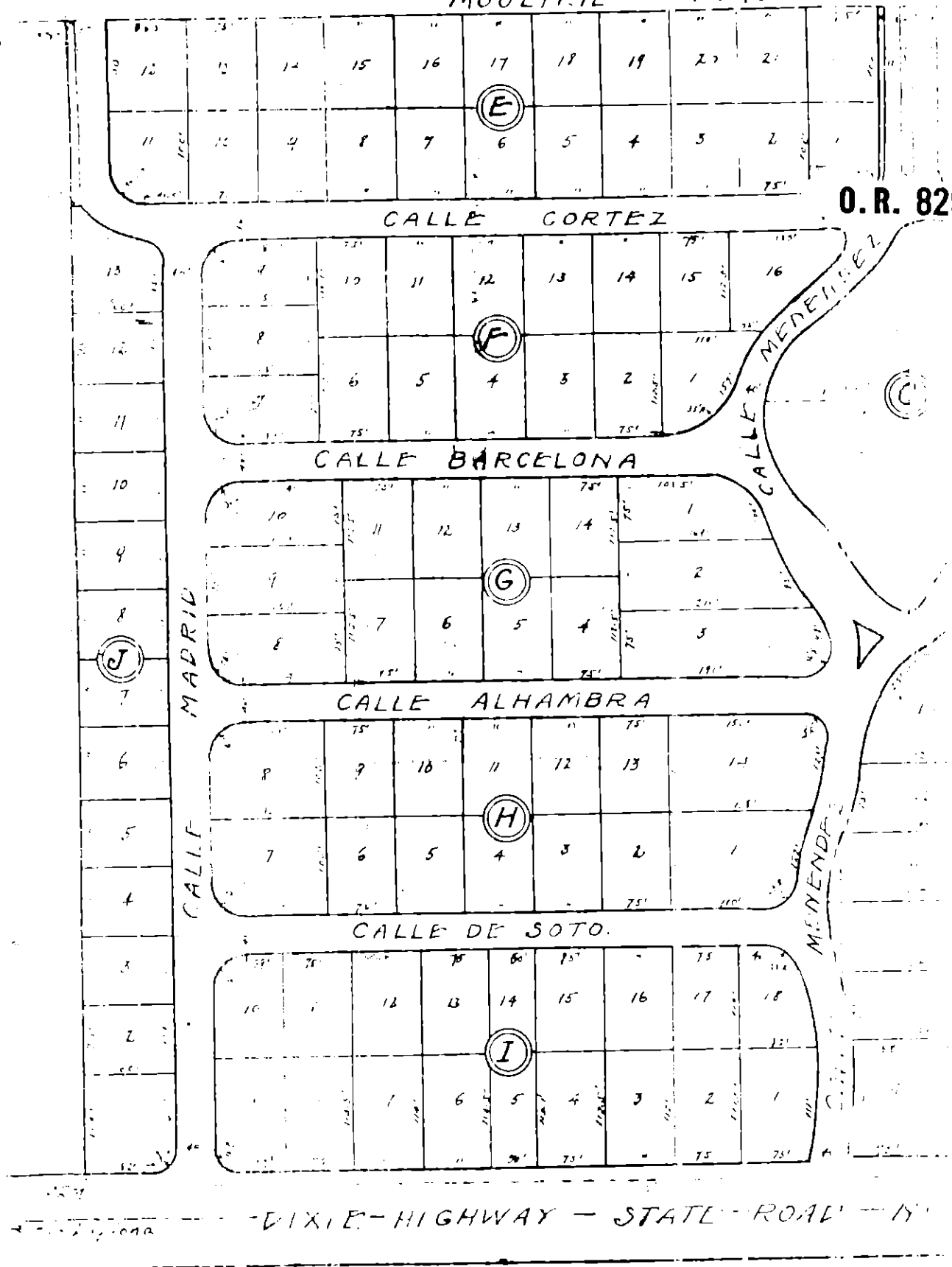
173070 -
(JOHNSON)

17

PARQUE AVILES SUBD
UNIT 1 MB 3/55



O.R. 829 PG 0496



B. This plat replaces "UNIT N^o 1" as recorded in A.B. 3, 655

Note This plat shows location of Block C.
Proper width West End of block should be 100 ft.

UNITS 1 + 2 OF
PARQUE AVILES

STATE OF FLORIDA
COUNTY OF ST. JOHNS

I, CARL "BUD" MARKEL, CLERK OF THE CIRCUIT COURT, Ex-officio Clerk of the Board of County Commissioners of St. Johns County, Florida,

DO HEREBY CERTIFY that the foregoing is a true and correct copy of the following:

RESOLUTION NUMBER 89-177

RESOLUTION NO. 89-177 adopted by the Board of County Commissioners of St. Johns County, Florida, at a regular meeting of said Board held August 8, 1989, and recorded in official minutes of said meeting.

as the same appears of record in the office of the Clerk of the Circuit Court of St. Johns County, Florida, of the public records of St. Johns County, Florida.

IN WITNESS WHEREOF, I have hereunto set my hand and affixed my seal of office this 11th day of August, 1989.

CLERK OF THE CIRCUIT COURT
ST. JOHNS COUNTY, FLA

89 AUG 22 AM 9:59

Carl Bud Markel
CLERK OF CIRCUIT COURT

CARL "BUD" MARKEL,
CLERK OF THE CIRCUIT COURT
Ex-officio Clerk of the Board of County Commissioners of St. Johns County, Florida

BY: *Connie E. McDaniel*
Deputy Clerk-Connie E. McDaniel

