

RESOLUTION 89- 21

WHEREAS, a petition has been filed by qualified land owners to vacate part of certain public streets, alleyways or roads hereinafter described; and,

WHEREAS, this Board has heretofore passed a resolution as required by Section 336.09, Florida Statutes, and Notice of Public Hearing has been duly published and Proof of Publication has been filed with this Board; and

WHEREAS, it appears that there are no objections and the averments of said petition are true,

NOW, THEREFORE, IN CONSIDERATION OF THE PREMISES, BE IT RESOLVED BY THE BOARD OF COUNTY COMMISSIONERS OF ST. JOHNS COUNTY, FLORIDA, AS FOLLOWS:

1.

That the following described streets, alleyways or roads, to wit:

Legal description as per attached SCHEDULE "A" be, and the same are hereby vacated, abandoned, discontinued and closed, and this Board hereby renounces and disclaims any right of the County and the Public in and to the above-described streets, alleyways or roads, and any land in connection therewith.

2.

That the notice required by Section 336.10, Florida Statutes, of the adoption of this resolution is hereby authorized to be published.

DATED this 24th day of January, 1989.

BOARD OF COUNTY COMMISSIONERS  
OF ST. JOHNS COUNTY, FLORIDA

BY: Nancy Walker  
Chairman

ATTEST: CARL "BUD" MARKEL, CLERK

BY: Connie E. McDaniel  
Deputy Clerk

SCHEDULE "A"  
TO PETITION TO VACATE PORTIONS OF  
CERTAIN STREETS, ALLEYWAYS OR ROADS

PART I

That portion of EAST STREET, currently unopened, lying North of the Easterly extension of the South line of Lot 1, Block 5, Rothschild Addition to St. Augustine, as per map or plat thereof recorded at Map Book 3, Page 133, Public Records of St. Johns County, Florida, South of the portion of EAST STREET vacated by St. Johns County Resolution 85-145, recorded in Official Records Book 689, Page 333 of the Public Records of St. Johns County, Florida, and bounded on the East by the West Right-of-Way line of State Road No.5, also know as U.S. Highway No. 1 and that portion of Lot 5, Seminole Park, lying West of State Road No. 5, also known as U.S. Highway No. 1, according to the map or plat thereof recorded in Map Book 3, Page 87, and on the West by Block 5 of said Rothschild Addition to St. Augustine.

PART II

That portion of HENRY STREET, currently unopened, lying West of the Southerly extension of the East line of Lot 1, Block 5, Rothschild Addition to St. Augustine, as per map or plat thereof recorded at Map Book 3, Page 133, Public Records of St. Johns County, Florida, East of that portion of HENRY STREET vacated by St. Johns County Resolution on May 24, 1966, recorded in Official Records Book 87, Page 389 of the Public Records of St. Johns County, Florida, and bounded on the South by Block 6 and Block 7 of said Rothschild Addition to St. Augustine, and on the North by Block 4 and Block 5 of said Rothschild Addition to St. Augustine.

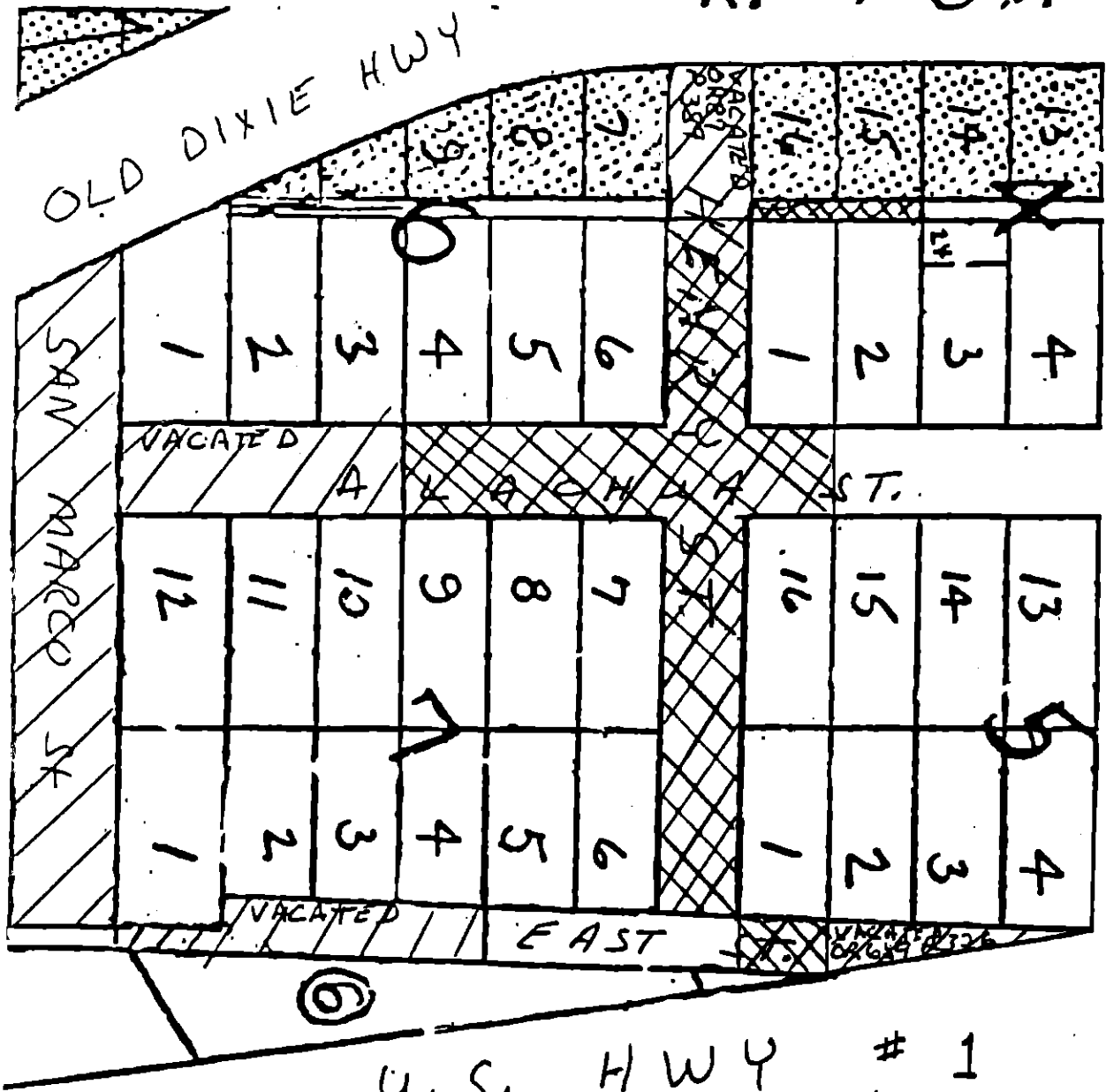
PART III



That portion of ALACHUA STREET, currently unopened, lying South of the Easterly extension of the North line of Lot 1, Block 4 and North of the Easterly extension of the South line of Lot 4, Block 6 of Rothschild Addition to St. Augustine, as per map or plat thereof recorded at Map Book 3, Page 133, Public Records of St. Augustine, Florida, and bounded on the West by Block 4 and Block 6 and on the East by Block 5 and Block 7 of the said Rothschild Addition to St. Augustine.

PART IV

That portion of a 12 foot wide unnamed alley, currently unopened, lying South of the Easterly extension of the North line of Lot 15, Block 4 and North of the Easterly extension of the South line of Lot 16, Block 4 of Rothschild Addition to St. Augustine, as per map or plat thereof recorded at Map Book 3, Page 133, Public Records of St. Johns County, Florida, and bounded on the West by Lots 15 and 16, Block 4 and on the East by Lots 1 and 2, Block 4, of the said Rothschild Addition to St. Augustine.

S. R. # 5.A



Already VACATED →   Proposed to be VACATED