

RESOLUTION NO. 89- 222

**WHEREAS**, the Trustees of the Internal Improvement Fund are considering the sale of State owned lands in St. Johns County described as Parcel Numbers 55-1020.0, 55-1030.0, 55-1990.0, 55-3760.0, and Lots 5,6, and 7 of Block 23, part of Parcel No. 55-2830.0 and

**WHEREAS**, the Trustees of the Internal Improvement Fund have notified the St. Johns County Board of County Commissioners pursuant to Section 18-2.001 Florida Administration Code.

**NOW, THEREFORE, BE IT RESOLVED** that the St. Johns County Board of County Commissioners would like to negotiate for the purchase of the above described parcels of land plus the West 10 feet of Parcel No. 55-3820.0 for road right of way of Datil Pepper Road.

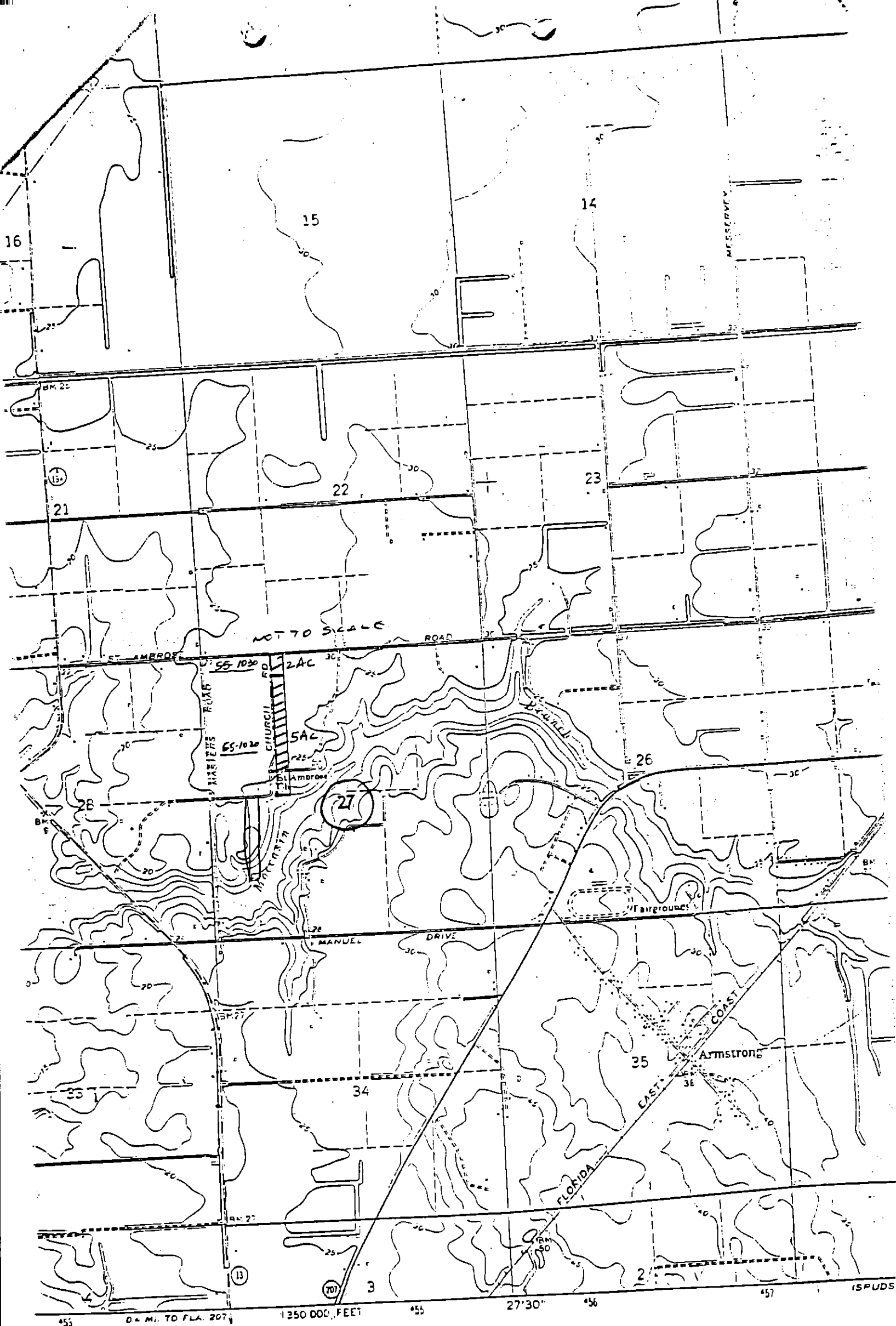


BOARD OF COUNTY COMMISSIONERS  
OF ST. JOHNS COUNTY, FLORIDA

BY: *Craig Maguire*  
Vice Chairman

ATTEST: Carl "Bud" Markel, Clerk

BY: *Rosemary Jones*  
Deputy Clerk

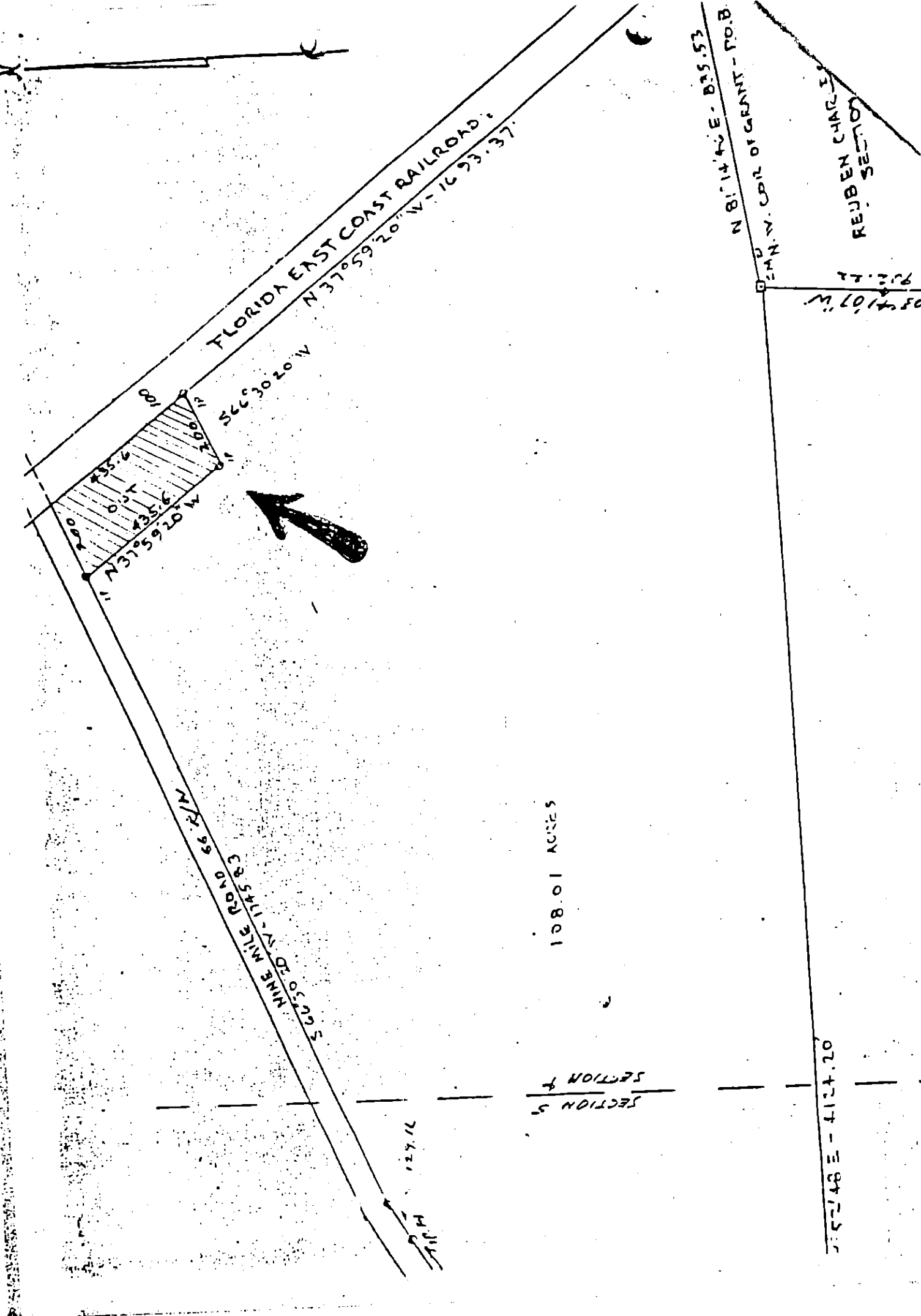


Parcel Number 55-1020.0

Section 27, Township 08 South,  
Range 28 East, ST. JOHNS COUNTY

Parcel Number 55-1030.0

Section 27, Township 08 South,  
Range 28 East, ST. JOHNS COUNTY



Parcel Number 55-1990-0

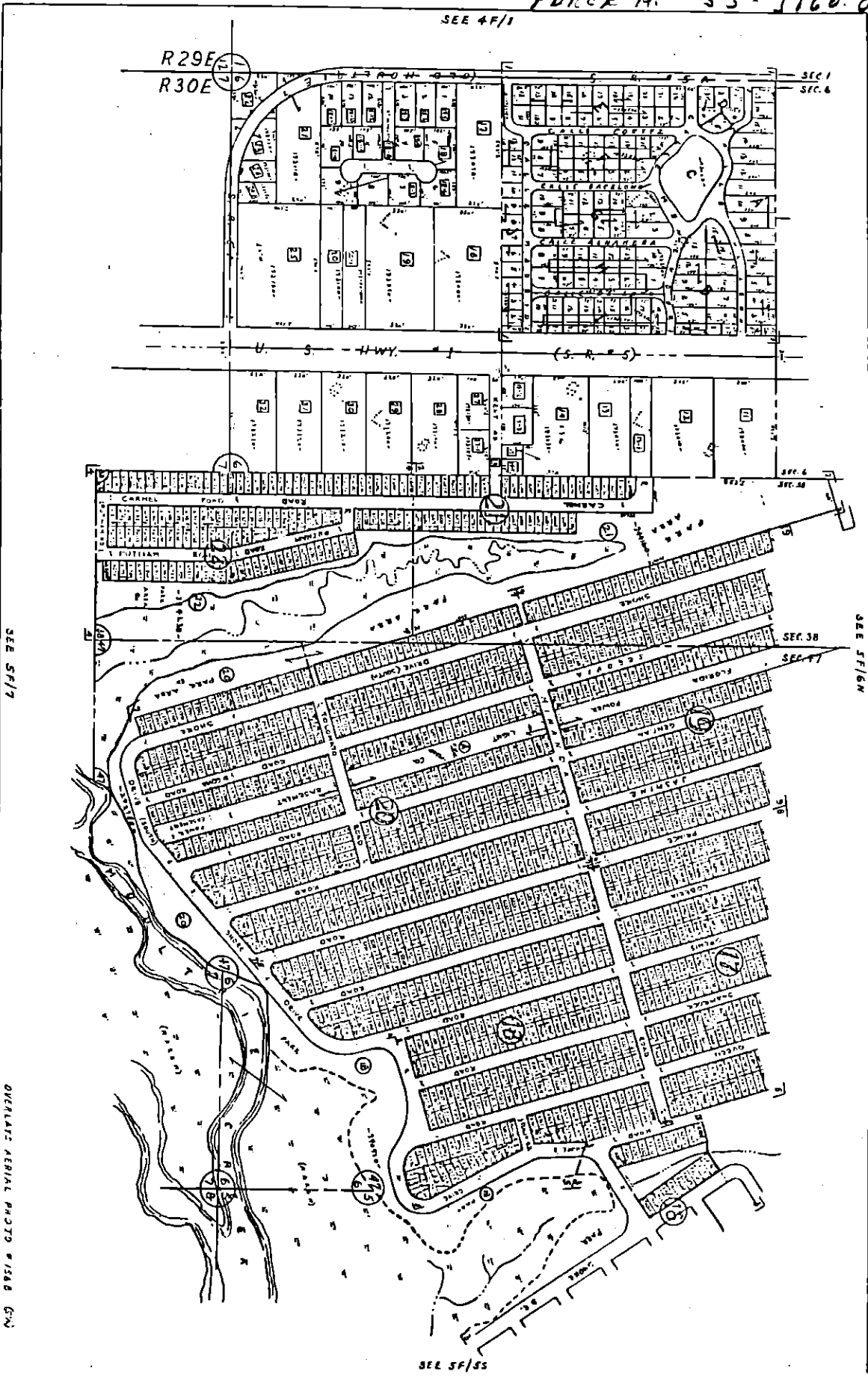
ST. JOHNS COUNTY  
 Section 04, Township 06 South, Range 29 E  
 Containing approximately 2.0 acres

PORCK M. 55-2760-0

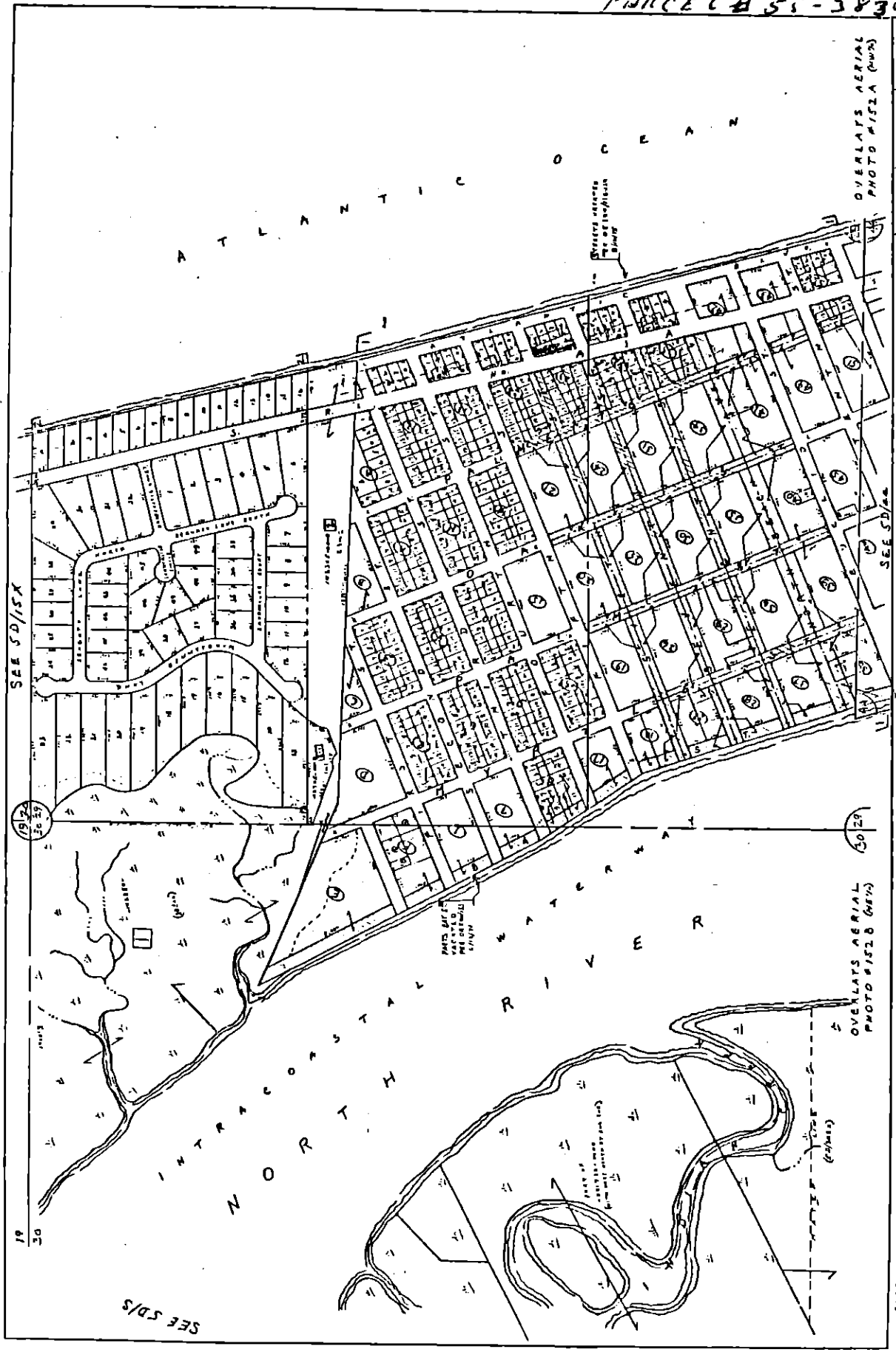
NO.	SUBDIVISION	INDENT	ACRES	NO.	SUBDIVISION	INDENT	ACRES
1	PARQUE AVENUE	1	1.29	9	ST AUGUSTINE SOUTH-UNIT 17	9	2.21
2	PROSPECTOR-UNIT 21	2	1.29	10	ST AUGUSTINE SOUTH-UNIT 18	10	2.21
3	PROSPECTOR-UNIT 22	3	1.29	11	ST AUGUSTINE SOUTH-UNIT 19	11	2.21
4	PROSPECTOR-UNIT 23	4	1.29	12	ST AUGUSTINE SOUTH-UNIT 20	12	2.21
5	PROSPECTOR-UNIT 24	5	1.29	13	ST AUGUSTINE SOUTH-UNIT 21	13	2.21
6	PROSPECTOR-UNIT 25	6	1.29	14	ST AUGUSTINE SOUTH-UNIT 22	14	2.21
7	PROSPECTOR-UNIT 26	7	1.29	15	ST AUGUSTINE SOUTH-UNIT 23	15	2.21
8	PROSPECTOR-UNIT 27	8	1.29	16	ST AUGUSTINE SOUTH-UNIT 24	16	2.21

SEE SP/7  
 407  
 SEC 38 T. BOSLEY GRANT  
 SEC 47 E. DUPONT T. BOSLEY GRAN

DATE	6.38.47	SECTION	85	QUARTER	30E
SCALE	1"=100'	PLAT	5F	BOOK	65
ST. JOHNS COUNTY, FLORIDA OFFICE OF COUNTY CLERK					



PARCEL # 51-3830.0



SECTION	RANGE	TOWNSHIP	SECTION
29	6S	30E	5D
SCALE	DATE	BY	
1"=50'			
ST. JOHNS COUNTY, FLORIDA			
OFFICE OF PROPERTY APPRAISAL			

SEE THIS MAP FOR THE LOCATION OF THE PARCELS SHOWN. THE PLAT IS SUBJECT TO THE PLAT RECORDS OF THE COUNTY OF ST. JOHNS COUNTY, FLORIDA.

364

SUBDIVISION INDEX

1. 1930

2. 1931

3. 1932

4. 1933

5. 1934

6. 1935

7. 1936

8. 1937

9. 1938

10. 1939

11. 1940

12. 1941

13. 1942

14. 1943

15. 1944

16. 1945

17. 1946

18. 1947

19. 1948

20. 1949

21. 1950

22. 1951

23. 1952

24. 1953

25. 1954

26. 1955

27. 1956

28. 1957

29. 1958

30. 1959

31. 1960

32. 1961

33. 1962

34. 1963

35. 1964

36. 1965

37. 1966

38. 1967

39. 1968

40. 1969

41. 1970

42. 1971

43. 1972

44. 1973

45. 1974

46. 1975

47. 1976

48. 1977

49. 1978

50. 1979

51. 1980

52. 1981

53. 1982

54. 1983

55. 1984

56. 1985

57. 1986

58. 1987

59. 1988

60. 1989

61. 1990

62. 1991

63. 1992

64. 1993

65. 1994

66. 1995

67. 1996

68. 1997

69. 1998

70. 1999

71. 2000

72. 2001

73. 2002

74. 2003

75. 2004

76. 2005

77. 2006

78. 2007

79. 2008

80. 2009

81. 2010

82. 2011

83. 2012

84. 2013

85. 2014

86. 2015

87. 2016

88. 2017

89. 2018

90. 2019

91. 2020

92. 2021

93. 2022

94. 2023

95. 2024

96. 2025

97. 2026

98. 2027

99. 2028

100. 2029

101. 2030

102. 2031

103. 2032

104. 2033

105. 2034

106. 2035

107. 2036

108. 2037

109. 2038

110. 2039

111. 2040

112. 2041

113. 2042

114. 2043

115. 2044

116. 2045

117. 2046

118. 2047

119. 2048

120. 2049

121. 2050

122. 2051

123. 2052

124. 2053

125. 2054

126. 2055

127. 2056

128. 2057

129. 2058

130. 2059

131. 2060

132. 2061

133. 2062

134. 2063

135. 2064

136. 2065

137. 2066

138. 2067

139. 2068

140. 2069

141. 2070

142. 2071

143. 2072

144. 2073

145. 2074

146. 2075

147. 2076

148. 2077

149. 2078

150. 2079

151. 2080

152. 2081

153. 2082

154. 2083

155. 2084

156. 2085

157. 2086

158. 2087

159. 2088

160. 2089

161. 2090

162. 2091

163. 2092

164. 2093

165. 2094

166. 2095

167. 2096

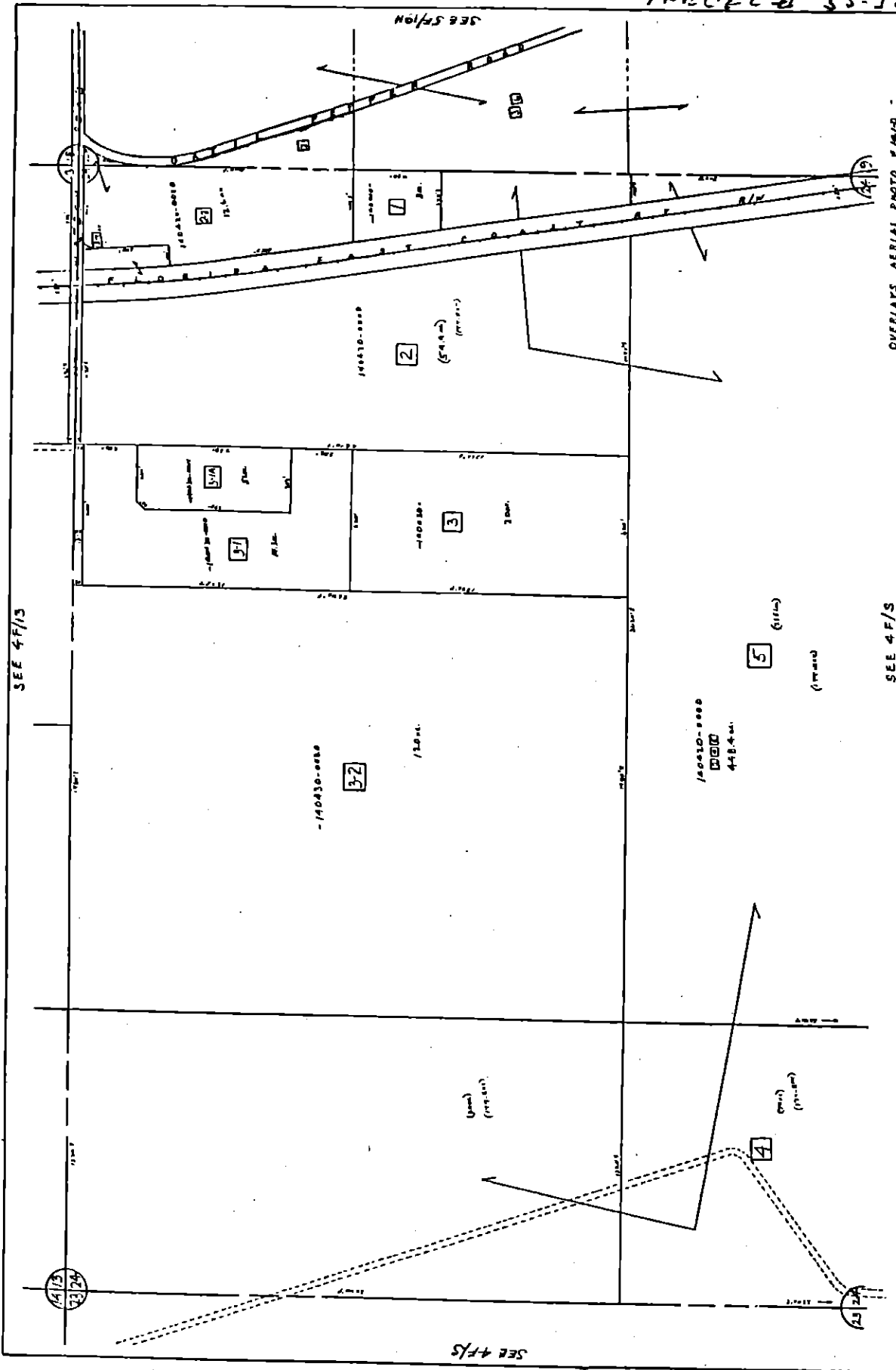
168. 2097

169. 2098

170. 2099

171. 2100

PARCEL 45-2420.0



SEE 4F/S

SEE 4F/S

SEE 4F/S

OVERLAYS AERIAL PHOTO W/MAID	
SECTION	24
PARCEL	85 29E
MAP	4F
DATE	24

341  
 THIS MAP IS FOR AIRBORNE PHOTO ONLY  
 IT DOES NOT CONSTITUTE A WARRANTY OF TITLE  
 OR A GUARANTEE OF ACCURACY