

RESOLUTION NO. 90-217

A RESOLUTION OF ST. JOHNS COUNTY REQUESTING THE FLORIDA DEPARTMENT OF NATURAL RESOURCES TO ESTABLISH RESTRICTED AREA DESIGNATIONS FOR THE ENTIRE LENGTH OF TROUT CREEK LOCATED IN ST. JOHNS COUNTY, FLORIDA AND REQUESTING FURTHER THAT THE DEPARTMENT AUTHORIZE THE COUNTY TO INSTALL "IDLE SPEED NO WAKE" REGULATORY MARKERS WITHIN THE RESTRICTED AREA.

WHEREAS, the Department of Natural Resources has the authority pursuant to Florida Statute 327.46 to establish by rule, restricted areas on the waterways of the State for purposes of promoting the safety of the public; and,

WHEREAS, the promoting of the public safety includes the regulation of boat speeds and boat traffic where such restrictions are deemed necessary based on boating accidents, visibility, tides, congestion and other navigational hazards; and

WHEREAS, Trout Creek for which St. Johns County is requesting area designation exhibits characteristic deemed necessary to qualify for restricted area designation;

NOW, THEREFORE, BE IT RESOLVED this 11th day of December 1990 by the Board of County Commissioners of ST. Johns County, Florida, as follows:

Section 1. St. Johns County requests the Department of Natural Resources to designate Trout Creek located within St. Johns County, Florida as "Idle Speed - No Wake Zone.

Section 2. St. Johns County further requests authorization from the Department of Natural Resources, Division of Marine Resources, to place "Idle Speed No Wake" regulatory markers at appropriate intervals along the designated restricted area.

Section 3. this resolution does not repeal, rescind, or effect ST. Johns County Resolutions No. 85-176 and NO. 86-24.

Section 4. The County Administrator is directed to deliver copies of this resolution, together with a county map required by Florida Stature 327.41 (3) locating the approximate placement of the markers, a statement of the specifications of the markers, a statement of the purpose of the markers, and a statement that the County will be responsible for the placement and upkeep of the markers to the Florida Department of Natural Resources and the legislative delegation of St. Johns County.

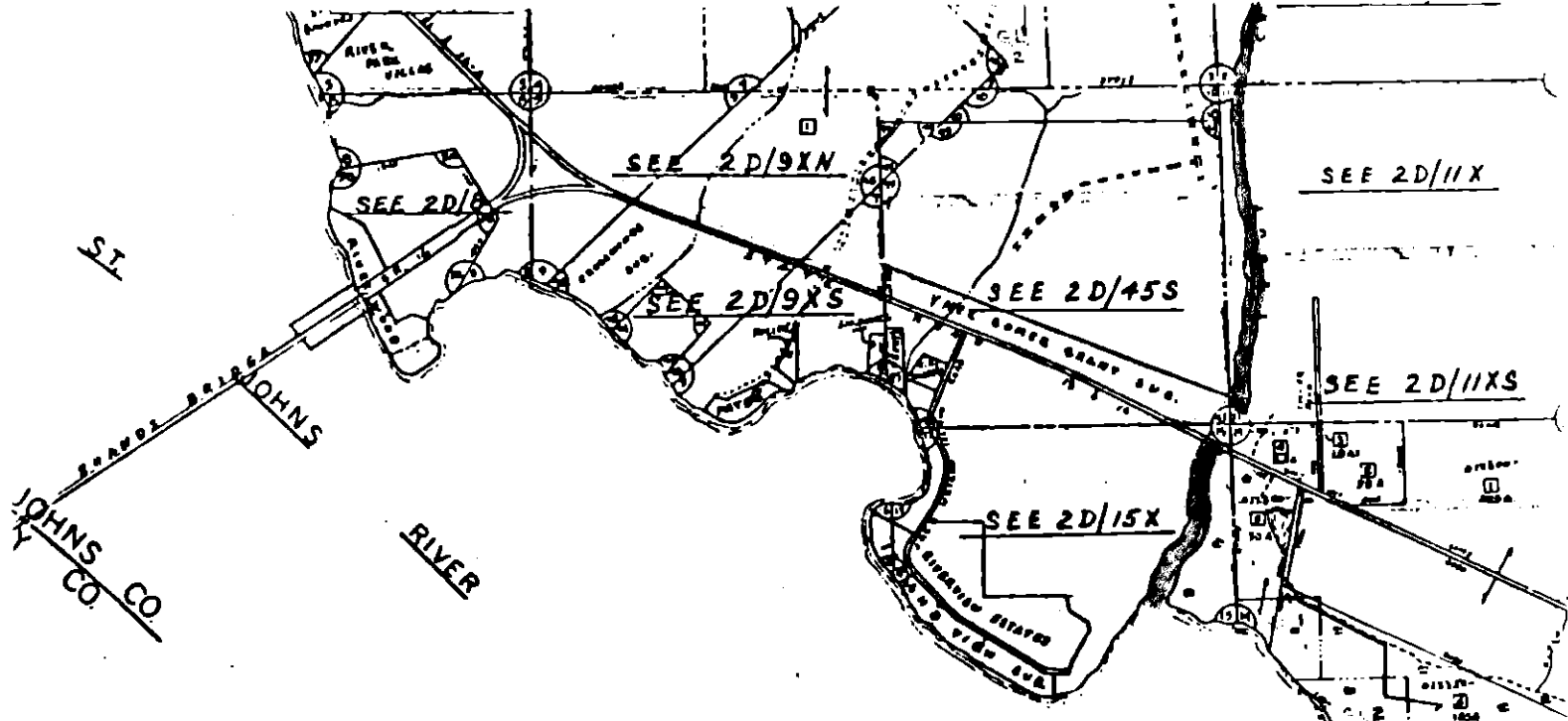
BOARD OF COUNTY COMMISSIONERS
OF ST. JOHNS COUNTY, FLORIDA

By: *Arnold P. Beal*
Its Chairman

ATTEST: CARL "BUD" MARKEL, CLERK

BY: *Amy B. Mulligan*
Deputy Clerk

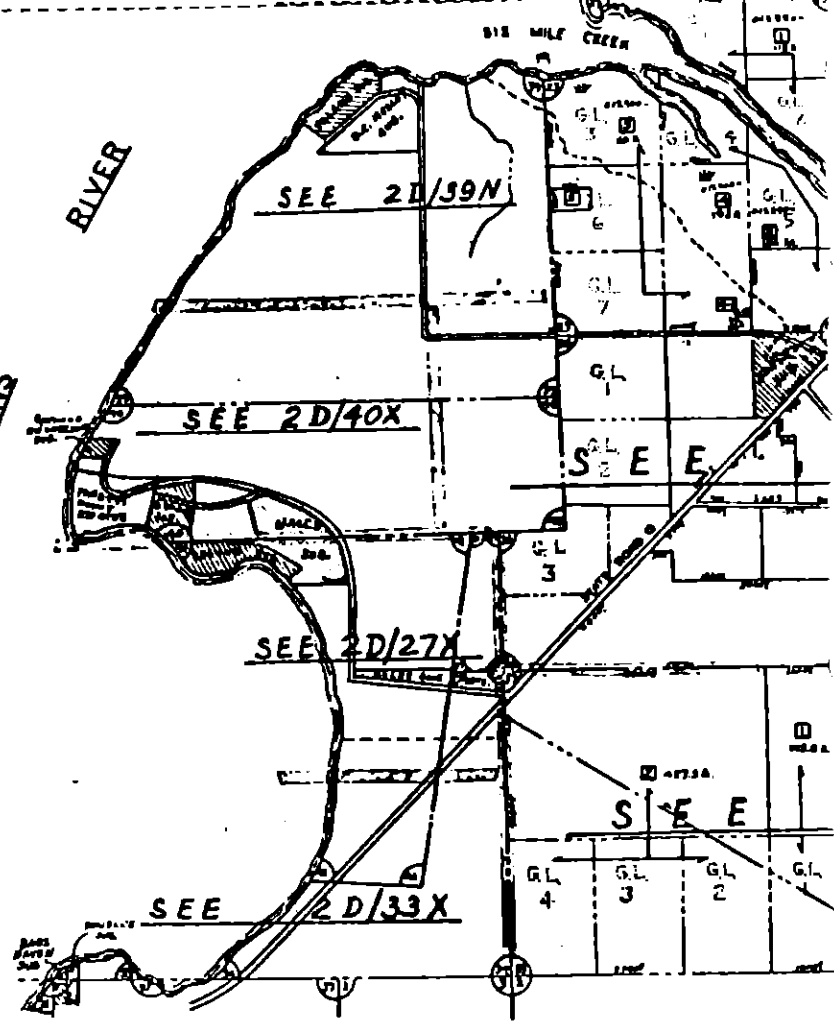




SUBDIVISIONS

OWELL	2D/12N
S	2D/2N
LE-LOT 7	2D/5XN
AT	2D/5XN
NT PLAT	2D/42X
X VILLAS	2D/5XS
D	2D/8
DS	2D/9XS

CLAY CO.
ST. JOHN'S CO.



- 140X
- 140X
- 127X
- 127X
- 127X
- X

UNRECORDED

12/11/90 BCC
No wake zone
Trout Creek

REF.