

RESOLUTION NO. 91-115

AN EMERGENCY RESOLUTION DECLARING A STATE OF EMERGENCY FOR THE AREAS SERVED BY PORTIONS OF THOMPSON BAILEY AND POWELL ROADS.

BE IT RESOLVED AND DECLARED BY THE BOARD OF COUNTY COMMISSIONERS AS FOLLOWS:

Section 1. The Board of County Commissioners of St. Johns County Florida (the "Board") hereby finds and declares the following:

- A. The area contiguous to and including the portions of Thompspon Bailey Road and Powell Road highlighted and shown on the attached Exhibit A (the "Roads") has encountered extensive flooding for the past 60 days and a threat exists for the health, safety and welfare of the approximately 50 residents who are served by these Roads.
- B. The Roads conditions are subject to worsen as the rainy season continues.
- C. The Roads are totally inaccessible by emergency vehicles and constitute a menace to the health, safety and welfare of the residents served by the Roads.
- D. The weather forecast predicts the likelihood of additional heavy rains in the area of the Roads.
- E. A state of local public emergency exists in the area served by the Roads.
- F. It is necessary and appropriate for the County to take the steps necessary to immediately make the Roads passable for emergency vehicles.
- G. Chapter 252 Florida Statutes encourages Countys to take actions necessary to alleviate local public emergencies.

Section 2. The St. Johns County Road and Bridge Department is hereby instructed to grade the Roads, place and compact 50-50 mix and shell on the Roads, and do such ditching as is necessary to make the Roads passable for emergency vehicles.

Section 3. The St. Johns County Road and Bridge Department is authorized to do only such amount of work on the Roads as is necessary to allow passage by emergency vehicles.

Section 4. The action and work authorized in Section 2 above are to be temporary to allow time for an overall drainage plan to be implemented for the Roads and the Road assessment or added tax paving program to be placed in effect.

Section 5. It is the desire of the Board of County Commissioners that the cost of repairing said Roads will be included in the total assessments or taxes to be levied against property owners specially benefited by County improvements to the Roads when Road non-ad valorem assessments or additional taxes are levied to finance such improvements.

PASSED AND ADOPTED THIS 1st DAY OF AUGUST 1991.

BOARD OF COUNTY COMMISSIONERS
OF ST. JOHNS COUNTY, FLORIDA

By: *Ronald H. Hurd*
Its Chairman

ATTEST: CARL "BUD" MARKEL, CLERK

By: *Carl "Bud" Markel*
Deputy Clerk

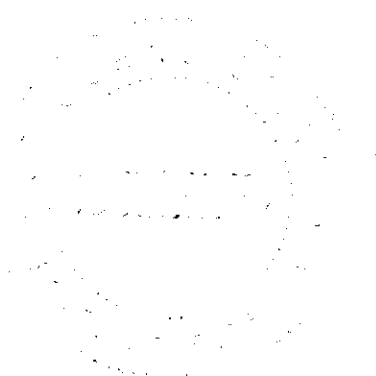
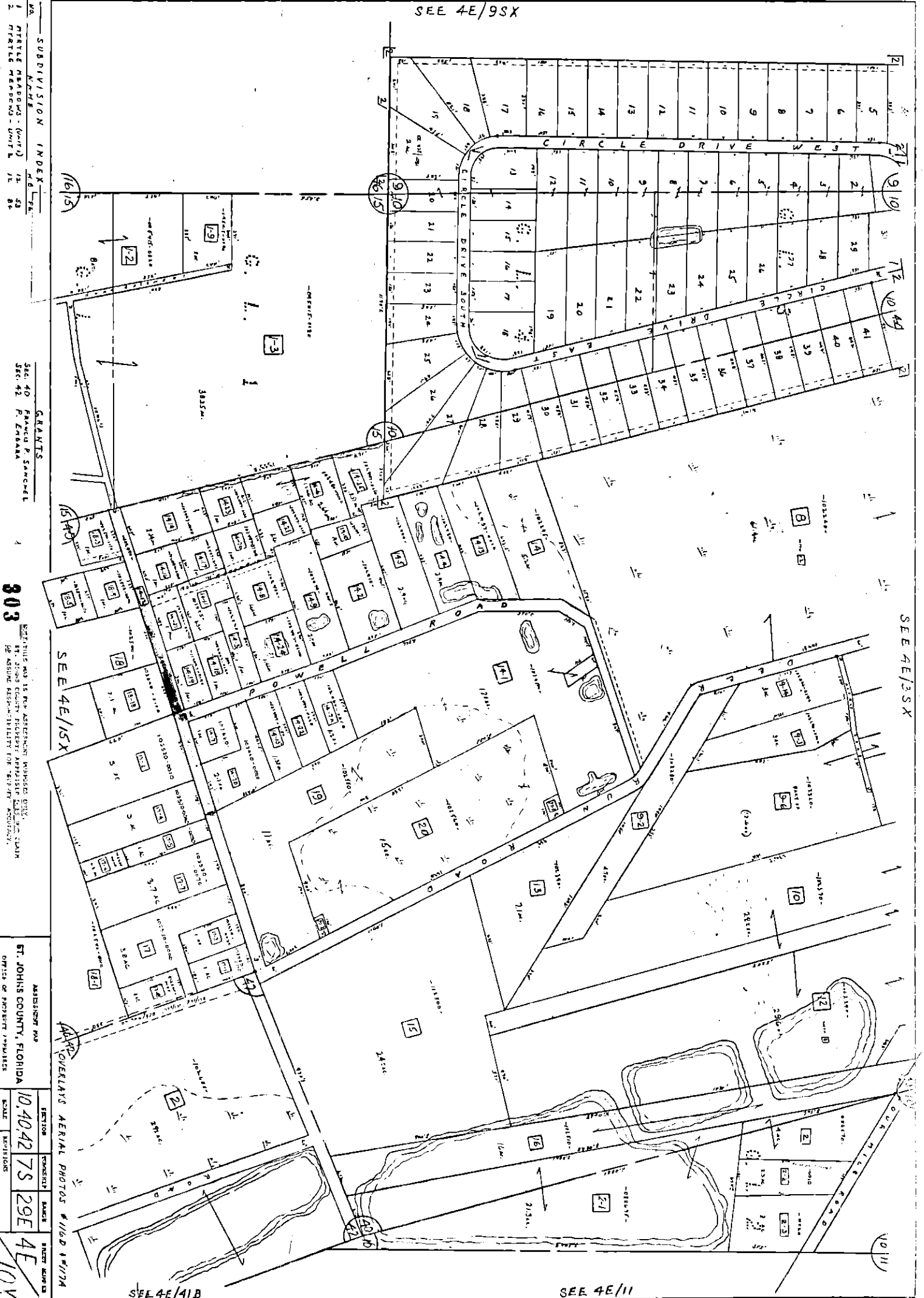


EXHIBIT "A"



SUBDIVISION INDEX

NO.	NAME	4E	7E
1	TRIPLE PARCELS - (UNIT 1)	12	48
2	TRIPLE PARCELS - (UNIT 2)	12	84

GRANTS

SEC. 40 FRANCIS P. SANCHEZ
 SEC. 42 P. ENBARA

303

BEARING AND IS THE ASSIGNED IMPROVED CITY OF ST. JOHN COUNTY, FLORIDA, BEARING RESPONSIBILITY FOR THE ACCURACY.

ASSISTANT AND

ST. JOHN COUNTY, FLORIDA

OFFICE OF PROJECT MANAGER

SECTION	CONTRACT	DATE	SCALE	REVISIONS
10/40/42	7S	29E	4E	10X

SEE 4E/41B

SEE 4E/11