

RESOLUTION NO. 91-122

A RESOLUTION ESTABLISHING AND SETTING FORTH THE WATER AND SEWER RATES AND THE DEPOSIT REQUIREMENTS FOR USERS OF WATER AND SEWER FACILITIES OWNED AND OPERATED BY ST. JOHNS COUNTY, FLORIDA, INCLUDING THE SOON TO BE ACQUIRED "SHORES SYSTEM".

WHEREAS, House Bill 3839 and St. Johns County ordinance 91-2 merged and consolidated the water and sewer system of Anastasia Sanitary District of St. Johns County (the "District System") with the water and sewer system of St. Johns County, (the "Mainland System") to be owned and operated thereafter by St. Johns County (the "County") as part of the County's water and sewer facilities; and

WHEREAS, on August 22, 1991 the County will acquire the water and sewer facilities that are currently owned and operated by United Florida Utilities Corporation (the "Utility") that serve an area in and around St. Augustine Shores (the "Shores System"); and

WHEREAS, the County's financing plan pertaining to the acquisition of the Shores System provides that the County will initially charge the users of the Shores System the same water and sewer rates, including an amount equal to the existing regulatory assessment fee, and the same sewer spray effluent rates and private fire protection service rates as are currently charged by the Utility; and

WHEREAS, the Board of County Commissioners of St. Johns County as the Governing Body of the combined County and District Systems desires to continue to charge the users of the combined County and District Systems the existing uniform basic monthly water and sewer rates and charges (increased on October 1, 1991 by the required annual "inflation" index) that are currently charged to the users of the combined County and District Systems; and

WHEREAS, St. Johns County Ordinance 89-21 Section 22. Changes To Rates and Costs, authorized the Board of County Commissioners to change rates by duly adopted resolution; and

WHEREAS, St. Johns County Ordinance 90-16 Section 8 creating Section 42 I(a) Water Rates and J(a) Sewer Rates authorized the Board of County Commissioners to change rates by duly adopted resolution; and

WHEREAS, there currently exists, and may continue to exist, one or more St. Johns County water and sewer capacity agreements and temporary permits (Connection Commitments) entered into between January 18, 1990, and August 22, 1990, wherein the parties entered into such Connection Commitments based upon the property owners stated desire to induce the County to issue its water and sewer revenue bonds, series 1990A, (said bonds having since been refunded), to enable the County to construct water and sewer facilities to serve such owners property within the I-95/SR-16 MSBU; and

WHEREAS, the basic monthly water and sewer rates established in sections 42I(A) and 42J(A) of County ordinance 90-16, and the sewage collection non ad valorem assessments, the fire protection non ad valorem assessments, and the water and sewer unit connection fees established by said ordinance were coordinated, set and established in the manner and for the purposes described in said ordinance and were intended to apply to the aforescribed Connection Commitments:

NOW THEREFORE, BE IT RESOLVED BY THE BOARD OF COUNTY COMMISSIONERS OF ST. JOHNS COUNTY this 13th day of August, 1991

Section 1. St. Johns County Ordinance 89-21, as amended, Sections 15(A) and 42I(A) Water Rates, and Sections 16(A) and 42J(A) Sewer Rates, are hereby changed, effective October 1, 1991, to impose the following basic monthly water and sewer rates within the District System and within the Mainland System:

Basic Monthly Water Rates

Minimum (4,000 gallons)	\$16.22
Per 1,000 gallons in excess of 4,000 gallons	\$ 4.29

Basic Monthly Sewer Rates

Minimum (4,000 gallons)	\$16.73
Per 1,000 gallons in excess of 4,000 gallons	\$ 3.90

These rates include and take into account the Section 22 (Ordinance 89-21 as amended) "annual inflation index" change for October 1991. No other portions of said sections are changed hereby.

Section 2. Section 1 above shall not modify the basic monthly water and sewer rates established under Sections 42I(A) and Section 42J(A) of St. Johns County ordinance 90-16 in those instances, and only those instances, pertaining to rates charged for County water and sewage service within the I-95/SR-16 MSBU for the properties, and only those properties, receiving such services pursuant to a non terminated St. Johns County water and sewer capacity agreement and temporary permit (Connection Commitment) that was entered into between January 18, 1990 and August 22, 1990.

Section 3. Other than as provided in Section 4 of this resolution, commencing August 22, 1991, all provisions of St. Johns County ordinances 89-21 and 90-16 as amended or supplemented from time to time and St. Johns County resolution 91-4, as amended or supplemented from time to time, shall apply to current and future

utility customers within the Shores System. The Shores System consists of the St. Augustine Shores Service Area depicted on the service area map on Exhibit A attached hereto as more particularly described on Exhibit B attached hereto.

Section 4. A. Rates. Commencing August 22, 1991 the following rates, charges and policies shall apply and be in effect in the Shores System:

- | | |
|---|---|
| 1 - Water and Sewer Base Facility and Gallonage Rates for Residential and General Service | The effective rate will be the rate included in the Utility tariff on file with the St. Johns County Water and Sewer Authority on August 21, 1991 (applicable tariff pages attached hereto as Exhibits C, D, E and F). |
| 2 - Sewer Spray Effluent Rates | The effective rate will be the rate included in the Utility tariff on file with the St. Johns County Water and Sewer Authority on August 21, 1991 (applicable tariff pages attached hereto as Exhibit G). |
| 3 - Private Fire Protection Service Rates | The effective rate will be the rate included in the Utility tariff on file with the St. Johns County Water and Sewer Authority on August 21, 1991 (applicable tariff pages attached hereto as Exhibit H). |
| 4 - Acquisition Surcharge in Lieu of Regulatory Assessment Fee | The regulatory assessment fee on the above referenced tariff pages, Exhibits C, D, E, F, G and H, is replaced with a County acquisition surcharge of 4.5% of gross revenue in lieu of a regulatory assessment fee of 4.5% of gross revenue. |
| 5 - Annual Cost of Living Increase | The October 1, 1991 annual cost of living increase provided in Ordinance 89-21 as amended shall not apply. |

B. Deposits. The terms of the Shores System acquisition agreement between the County and Utility require that all deposits currently held by the Utility be either 1) applied against any outstanding accounts receivable of the customer before acquisition of the accounts receivable by the County, or 2) refunded to the customer if the customer has no outstanding accounts receivable or if the refund amount is greater than the outstanding account receivable the difference will be refunded to the customer.

All terms of the deposit agreement between the Utility and its current customers prior to the acquisition will transfer to the County and be in force until such time as either 1) the customer account is closed and a new account is opened at the same service address, or 2) the customer is delinquent in paying his monthly utility bill and has been disconnected at which time an appropriate deposit will be collected based upon the deposit policy of the County within the County and District Systems which is in effect at that time.

Upon acquisition of the Shores System by the County, the deposit policy of the County which is in effect will govern deposit requirements for all new connections in the Shores System.

C. Effective Period. All provisions of this section 4 will be effective from August 22, 1991 to and including August 21, 1992 at which time all rates, charges and policies within the Shores System as established by this section 4 will revert to the County rates, charges and policies in effect at that time with the County and District Systems.

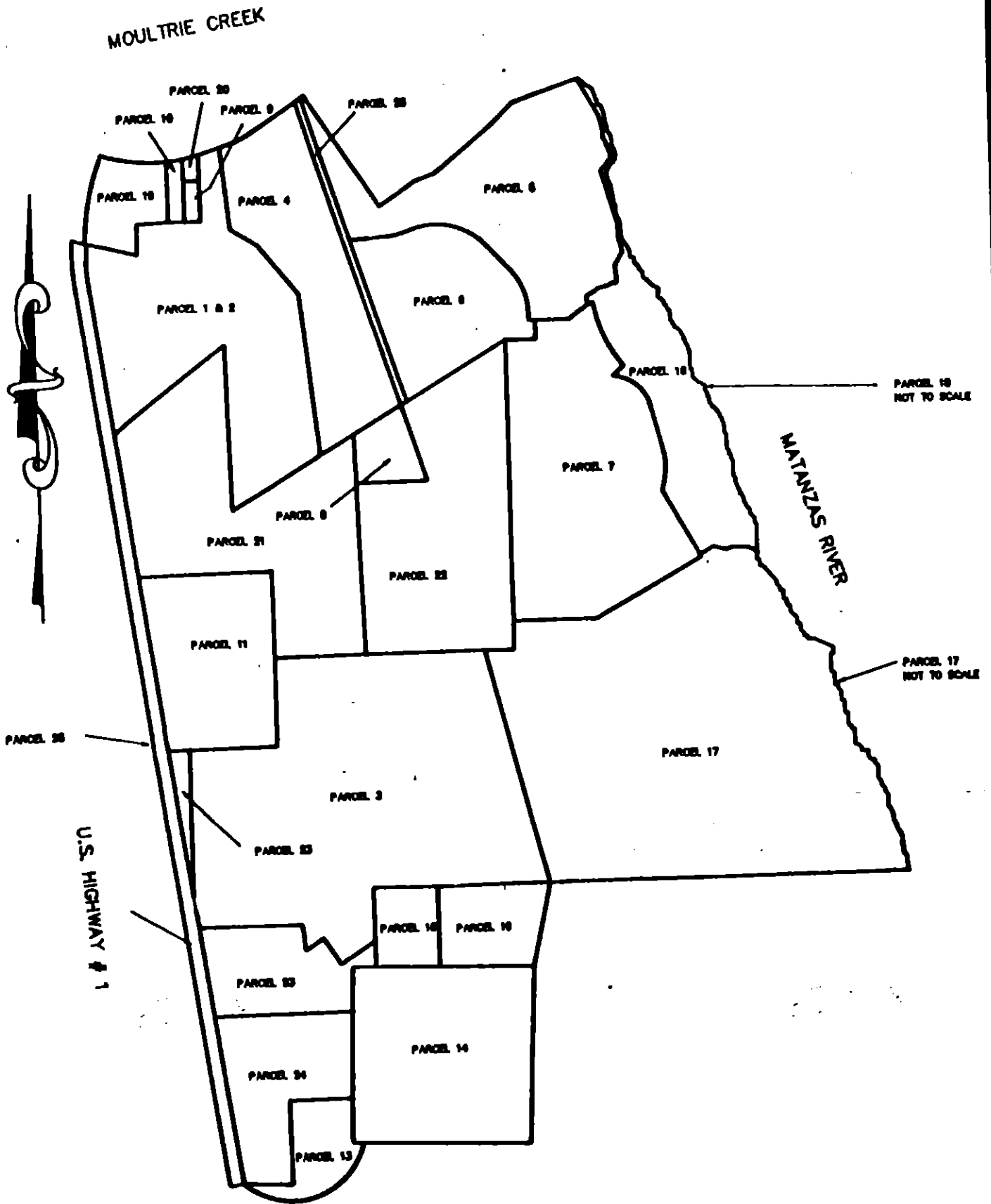
Passed and Adopted this 13th day of August, 1991 by the Board of County Commissioners of St. Johns County, Florida.

BOARD OF COUNTY COMMISSIONERS
OF ST. JOHNS COUNTY, FLORIDA

BY: *Ronald H. Brown*
Its Chairman

ATTEST:

BY: *Carl B. Markel*
~~Deputy~~ Clerk



GRAPHIC SCALE



(IN FEET)
1 inch = 2000ft.

THIS IS NOT A SURVEY
INFORMATION SHOWN IS NOT FIELD VERIFIED
BASED ON PLATS AND DEEDS OF RECORD SHOWN

A parcel of land for a proposed assessment district in Township 8 South, Range 30 East, St. Johns County, Florida, described as follows:

- Parcel 1.
St. Augustine Shores Unit 1 as recorded in Map Book 11, Pages 61 through 71 of the public records of said County.
- Parcel 2.
Replat of a portion of St. Augustine Shores Unit 1 as recorded in Map Book 11, Pages 76 through 80 of said public records.
- Parcel 3.
Replat of St. Augustine Shores Unit 2 as recorded in Map Book 13, Pages 114 through 124 of said public records.
- Parcel 4.
St. Augustine Shores Unit 3 as recorded in Map Book 12, Pages 27 through 35 of said public records.
- Parcel 5.
St. Augustine Shores Unit 4 as recorded in Map Book 13, Pages 31 through 38 of said public records.
- Parcel 6.
St. Augustine Shores Unit 5 as recorded in Map Book 14, Pages 21 through 24 of said public records.
- Parcel 7.
St. Augustine Shores Unit 6 as recorded in Map Book 14, Pages 40 through 46 of said public records.
- Parcel 8.
Captains Pointe as recorded in Map Book 19, Pages 61 through 62 of said public records.
- Parcel 9.
Cafaro Subdivision as recorded in Map Book 14, pages 82 through 83 of said public records.
- Parcel 10.
Oak Terrace as recorded in Map Book 11, Pages 74 through 75 of said public records.
- Parcel 11.
Moultrie Heights as recorded in Map Book 4, Page 51 of said public records, easterly of U.S. Highway #1.
- Parcel 12.
That part of Government Lots 1, 2, and 7, Section 30 of said Township and Range, easterly of U.S. Highway #1.
- Parcel 13.
That part of Government Lot 8, Section 30, of said Township and Range and that part of Section 45, of said Township and Range which lies easterly of U.S. Highway #1 and northerly and westerly of the following described curve:

Beginning at the northwest corner of Section 29, of said Township and Range, thence southwesterly along a curve concave to the North having a radius of 1,110 feet and said curve terminating at the intersection of the North line of said Section 45 and the East Right-of-Way of U.S. Highway #1.
- Parcel 14.
Section 44 of said Township and Range.
- Parcel 15.
Section 20 of said Township and Range.

Parcel 16.

That part of Section 42, of said Township and Range, westerly of the following described line:

Beginning at the southeast corner of tract "U" of said replat of St. Augustine Shores Unit 2, thence southerly to the northeast corner of Section 44, of said Township and Range, and there terminating.

Parcel 17.

That part of Sections 40 and 41, of said Township and Range, which lies westerly of said replat of St. Augustine Shores unit 2, southerly of said St. Augustine Shores Unit 6 and easterly of the Matanzas River.

Parcel 18.

That part of Sections 8, 16, 17, 40 and 41, of said Township and Range, which lies westerly of the Matanzas River, easterly of said St. Augustine Shores Units 4 and 6, and southerly of the North line of Lot 44, Block 121 of said St. Augustine Shores Unit 4, extended easterly to the Matanzas River.

Parcel 19.

That part of Section 48, of said Township and Range, northerly of said St. Augustine Shores Unit 1, westerly of said Oak Terrace, southerly of Vall Point Road, and easterly of U.S. Highway #1.

Parcel 20.

That part of Section 48, of said Township and Range, southerly of Vall Point Road, westerly of said St. Augustine Shores Unit 1, easterly of said Oak Terrace, and northerly of said Cafaro Subdivision.

Parcel 21.

That part of Government Lots 5, 6, 7, 8, 9, and 14, Section 18, of said Township and Range, southerly and westerly of said St. Augustine Shores Unit 1 and easterly of U.S. Highway #1.

Parcel 22.

Section 17 of said Township and Range.

Parcel 23.

That part of Government Lots 5, 7 and 8, Section 19 of said Township and Range northerly and westerly of said replat of St. Augustine Shores unit 2 and easterly of U.S. Highway #1.

Parcel 24.

That part of Government Lots 12 and 13, Section 19, of said Township and Range, westerly of said replat of St. Augustine Shores Unit 2 and easterly of U.S. Highway #1.

Parcel 25.

That part of U.S. Highway #1 northerly of the South line of Section 30, of said Township and Range and southerly of the North line of tract "H", of said St. Augustine Shores Unit 1 extended westerly.

Parcel 26.

That parcel shown as an Florida Power and Light 100' easement on said St. Augustine Shores Unit 1, Unit 1 replat, Unit 4 and Unit 6 plats and recorded in Deed Book 192 of the public records of said St. Johns County.

EXHIBIT C

ST. AUGUSTINE SHORES UTILITIES, A DIVISION OF
UNITED FLORIDA UTILITIES CORPORATION
ST. AUGUSTINE SHORES

EIGHTH REVISED SHEET NO. 23.0

CANCELS SEVENTH REVISED SHEET NO. 23.0

WATER TARIFF

RESIDENTIAL SERVICE

RATE SCHEDULE RS

AVAILABILITY Available throughout the area served by the Company.

APPLICABILITY For water service for all purposes in private residences, individually metered apartment units, and individual meters for irrigation service.

LIMITATIONS Subject to all of the rules and regulations of this tariff and general rules and regulations of the St. Johns County Water and Sewer Authority and approved by the Board of County Commissioners of St. Johns County, Florida.

RATE Monthly Rates

<u>METER SIZE</u>	<u>BASE FACILITY CHARGE</u>	<u>GALLONAGE CHARGE</u> (Per 1,000 gallons)
5/8" x 3/4"	\$ 15.24	\$3.34
1"	38.07	3.34

REGULATORY FEE For service provided in St. Johns County on and after April 1, 1990, the rates approved by the Florida Public Service Commission for use in territory in St. Johns County shall be reduced by 2 1/2 percent to remove the Regulatory Assessment Fee (2 1/2 percent of gross revenues) previously paid to the Florida Public Service Commission, if such fee was included in its rates. A separate line item shall be added to each bill for the St. Johns County Regulatory Fee of 4 1/2 percent of gross revenue as provided by the St. Johns County Ordinance and classifications/guidelines contained in the 1984 Uniform System of Accounts by the National Association of Regulatory Utility Commissioners (NARUC). The amount of the regulatory fee may be changed from time to time by resolution of the Board of County Commissioners of St. Johns County, Florida.

Authority for the regulatory fee is Ordinance No. 89-63, known as the St. Johns County Water and Sewer Utilities Regulatory Ordinance as amended by Ordinance No. 90-19.

TERMS OF PAYMENT Bills are due and payable when rendered and become delinquent if not paid within twenty (20) days. After five (5) days written notice, service may then be discontinued.

TYPE OF FILING 1990 Price Index and Pass-Through

NOTES Seventh revised sheet not approved; adjustments made to back out Regulatory Assessment Fee were incorrect; refund given on customers' bills.

EFFECTIVE DATE August 1, 1991



MICHAEL L. BREIT, EXECUTIVE DIRECTOR
ST. JOHNS COUNTY WATER AND SEWER AUTHORITY

WATER TARIFF

EXHIBIT D

ST. AUGUSTINE SHORES UTILITIES, A DIVISION OF
UNITED FLORIDA UTILITIES CORPORATION
ST. AUGUSTINE SHORES

EIGHTH REVISED SHEET NO. 21.0

CANCELS SEVENTH REVISED SHEET NO. 21.0

SEWER TARIFF

RESIDENTIAL SERVICE

RATE SCHEDULE RS

AVAILABILITY Available throughout the area served by the Company.

APPLICABILITY For sewer service in private residences and individually metered apartment units.

LIMITATIONS Subject to all of the rules and regulations of this tariff and general rules and regulations of the St. Johns County Water and Sewer Authority and approved by the Board of County Commissioners of St. Johns County, Florida.

RATE Monthly Rates

<u>METER SIZE</u>	<u>BASE FACILITY CHARGE</u>	<u>GALLONAGE CHARGE</u> (Per 1,000 gallons of water consumption—6,000 gallon maximum)
All Meter Sizes	\$14.59	\$3.46
Maximum Charge	\$35.35	

REGULATORY FEE For service provided in St. Johns County on and after April 1, 1990, the rates approved by the Florida Public Service Commission for use in territory in St. Johns County shall be reduced by 2 1/2 percent to remove the Regulatory Assessment Fee (2 1/2 percent of gross revenues) previously paid to the Florida Public Service Commission, if such fee was included in its rates. A separate line item shall be added to each bill for the St. Johns County Regulatory Fee of 4 1/2 percent of gross revenue as provided by the St. Johns County Ordinance and classifications/guidelines contained in the 1984 Uniform System of Accounts by the National Association of Regulatory Utility Commissioners (NARUC). The amount of the regulatory fee may be changed from time to time by resolution of the Board of County Commissioners of St. Johns County, Florida.


Authority for the regulatory fee is Ordinance No. 89-63, known as the St. Johns County Water and Sewer Utilities Regulatory Ordinance as amended by Ordinance No. 90-19.

TERMS OF PAYMENT Bills are due and payable when rendered and become delinquent if not paid within twenty (20) days. After five (5) days written notice, service may then be discontinued.

TYPE OF FILING 1990 Price Index and Pass-Through

NOTES Seventh revised sheet not approved; adjustments made to back out Regulatory Assessment Fee were incorrect; refund given on customers' bills.

EFFECTIVE DATE August 1, 1991


MICHAEL L. BREIT, EXECUTIVE DIRECTOR
ST. JOHNS COUNTY WATER AND SEWER AUTHORITY

SEWER TARIFF

EXHIBIT E

ST. AUGUSTINE SHORES UTILITIES, A DIVISION OF
UNITED FLORIDA UTILITIES CORPORATION
ST. AUGUSTINE SHORES

EIGHTH REVISED SHEET NO. 22.0
CANCELS SEVENTH REVISED SHEET NO. 22.0

WATER TARIFF

GENERAL SERVICE

RATE SCHEDULE GS

AVAILABILITY Available throughout the area served by the Company.

APPLICABILITY To any customer for which no other schedule applies.

LIMITATIONS Subject to all of the rules and regulations of this tariff and general rules and regulations of the St. Johns County Water and Sewer Authority and approved by the Board of County Commissioners of St. Johns County, Florida.

RATE Monthly Rates

<u>METER SIZE</u>	<u>BASE FACILITY CHARGE</u>	<u>GALLONAGE CHARGE</u> (per 1,000 gallons)
5/8" x 3/4"	\$ 15.24	\$3.34
1"	38.07	3.34
1-1/2"	76.15	3.34
2"	121.84	3.34
3"	243.68	3.34
4"	380.74	3.34
6"	761.50	3.34

REGULATORY FEE For service provided in St. Johns County on and after April 1, 1990, the rates approved by the Florida Public Service Commission for use in territory in St. Johns County shall be reduced by 2 1/2 percent to remove the Regulatory Assessment Fee (2 1/2 percent of gross revenues) previously paid to the Florida Public Service Commission, if such fee was included in its rates. A separate line item shall be added to each bill for the St. Johns County Regulatory Fee of 4 1/2 percent of gross revenue as provided by the St. Johns County Ordinance and classifications/guidelines contained in the 1984 Uniform System of Accounts by the National Association of Regulatory Utility Commissioners (NARUC). The amount of the regulatory fee may be changed from time to time by resolution of the Board of County Commissioners of St. Johns County, Florida.


Authority for the regulatory fee is Ordinance No. 89-63, known as the St. Johns County Water and Sewer Utilities Regulatory Ordinance as amended by Ordinance No. 90-19.

TERMS OF PAYMENT Bills are due and payable when rendered and become delinquent if not paid within twenty (20) days. After five (5) days written notice, service may then be discontinued.

TYPE OF FILING 1990 Price Index and Pass-Through

NOTES Seventh revised sheet not approved; adjustments made to back out Regulatory Assessment Fee were incorrect; refund given on customers' bills.

EFFECTIVE DATE August 1, 1991


MICHAEL L. BREIT, EXECUTIVE DIRECTOR
ST. JOHNS COUNTY WATER AND SEWER AUTHORITY

WATER TARIFF

EXHIBIT F

ST. AUGUSTINE SHORES UTILITIES, A DIVISION OF
UNITED FLORIDA UTILITIES CORPORATION
ST. AUGUSTINE SHORES

EIGHTH REVISED SHEET NO. 20.0

CANCELS SEVENTH REVISED SHEET NO. 20.0

SEWER TARIFF

GENERAL SERVICE

RATE SCHEDULE GS

AVAILABILITY Available throughout the area served by the Company.

APPLICABILITY To any customer for which no other schedule applies.

LIMITATIONS Subject to all of the rules and regulations of this tariff and general rules and regulations of the St. Johns County Water and Sewer Authority and approved by the Board of County Commissioners of St. Johns County, Florida.

RATE Monthly Rates

<u>METER SIZE</u>	<u>BASE FACILITY CHARGE</u>	<u>GALLONAGE CHARGE</u> (Per 1,000 gallons)
5/8" X 3/4"	\$ 14.59	\$4.15
1"	36.46	4.15
1 1/2"	72.93	4.15
2"	116.69	4.15
3"	233.39	4.15
4"	364.66	4.15
6"	729.34	4.15

REGULATORY FEE For service provided in St. Johns County on and after April 1, 1990, the rates approved by the Florida Public Service Commission for use in territory in St. Johns County shall be reduced by 2 1/2 percent to remove the Regulatory Assessment Fee (2 1/2 percent of gross revenues) previously paid to the Florida Public Service Commission, if such fee was included in its rates. A separate line item shall be added to each bill for the St. Johns County Regulatory Fee of 4 1/2 percent of gross revenue as provided by the St. Johns County Ordinance and classifications/guidelines contained in the 1984 Uniform System of Accounts by the National Association of Regulatory Utility Commissioners (NARUC). The amount of the regulatory fee may be changed from time to time by resolution of the Board of County Commissioners of St. Johns County, Florida.


Authority for the regulatory fee is Ordinance No. 89-63, known as the St. Johns County Water and Sewer Utilities Regulatory Ordinance as amended by Ordinance No. 90-19.

TERMS OF PAYMENT Bills are due and payable when rendered and become delinquent if not paid within twenty (20) days. After five (5) days written notice, service may then be discontinued.

TYPE OF FILING 1990 Price Index and Pass-Through

NOTES Seventh revised sheet not approved; adjustments made to back out Regulatory Assessment Fee were incorrect; refund given on customers' bills.

EFFECTIVE DATE August 1, 1991


MICHAEL L. BREIT, EXECUTIVE DIRECTOR
ST. JOHNS COUNTY WATER AND SEWER AUTHORITY

SEWER TARIFF

EXHIBIT G

ST. AUGUSTINE SHORES UTILITIES, A DIVISION OF
UNITED FLORIDA UTILITIES CORPORATION
ST. AUGUSTINE SHORES

FOURTH REVISED SHEET NO. 22.0
CANCELS THIRD REVISED SHEET NO. 22.0

SEWER TARIFF CHARGES FOR SPRAY EFFLUENT

AVAILABILITY Available throughout the area served by the Company.

APPLICABILITY For sewage effluent used for irrigation.

LIMITATIONS Subject to all of the rules and regulations of this tariff and general rules and regulations of the St. Johns County Water and Sewer Authority and approved by the Board of County Commissioners of St. Johns County, Florida.

RATE Monthly Rates

BASE FACILITY CHARGE

Interim Flat Rate \$468.26

REGULATORY FEE For service provided in St. Johns County on and after April 1, 1990, the rates approved by the Florida Public Service Commission for use in territory in St. Johns County shall be reduced by 2 1/2 percent to remove the Regulatory Assessment Fee (2 1/2 percent of gross revenues) previously paid to the Florida Public Service Commission, if such fee was included in its rates. A separate line item shall be added to each bill for the St. Johns County Regulatory Fee of 4 1/2 percent of gross revenue as provided by the St. Johns County Ordinance and classifications/guidelines contained in the 1984 Uniform System of Accounts by the National Association of Regulatory Utility Commissioners (NARUC). The amount of the regulatory fee may be changed from time to time by resolution of the Board of County Commissioners of St. Johns County, Florida.


Authority for the regulatory fee is Ordinance No. 89-63, known as the St. Johns County Water and Sewer Utilities Regulatory Ordinance as amended by Ordinance No. 90-19.

TERMS OF PAYMENT Bills are due and payable when rendered and become delinquent if not paid within twenty (20) days. After five (5) days written notice, service may then be discontinued.

TYPE OF FILING 1990 Price Index and Pass-Through

NOTES Third revised sheet not approved; adjustments made to back out Regulatory Assessment Fee were incorrect; refund given on customers' bills.

EFFECTIVE DATE August 1, 1991



MICHAEL L. BREIT, EXECUTIVE DIRECTOR
ST. JOHNS COUNTY WATER AND SEWER AUTHORITY

SEWER TARIFF

EXHIBIT H

ST. AUGUSTINE SHORES UTILITIES, A DIVISION OF
UNITED FLORIDA UTILITIES CORPORATION
ST. AUGUSTINE SHORES

THIRD REVISED SHEET NO. 23.1

CANCELS SECOND REVISED SHEET NO. 23.1

WATER TARIFF

PRIVATE FIRE PROTECTION SERVICE

AVAILABILITY Available throughout the area served by the Company.

APPLICABILITY For private fire protection service.

LIMITATIONS Subject to all of the rules and regulations of this tariff and general rules and regulations of the St. Johns County Water and Sewer Authority and approved by the Board of County Commissioners of St. Johns County, Florida.

RATE Monthly Rates

BASE FACILITY CHARGE

6" Line \$253.83

NOTE: Base Facility Charge is one-third the charge of a comparable meter connection.

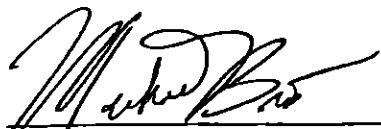
REGULATORY FEE For service provided in St. Johns County on and after April 1, 1990, the rates approved by the Florida Public Service Commission for use in territory in St. Johns County shall be reduced by 2 1/2 percent to remove the Regulatory Assessment Fee (2 1/2 percent of gross revenues) previously paid to the Florida Public Service Commission, if such fee was included in its rates. A separate line item shall be added to each bill for the St. Johns County Regulatory Fee of 4 1/2 percent of gross revenue as provided by the St. Johns County Ordinance and classifications/guidelines contained in the 1984 Uniform System of Accounts by the National Association of Regulatory Utility Commissioners (NARUC). The amount of the regulatory fee may be changed from time to time by resolution of the Board of County Commissioners of St. Johns County, Florida.

Authority for the regulatory fee is Ordinance No. 89-63, known as the St. Johns County Water and Sewer Utilities Regulatory Ordinance as amended by Ordinance No. 90-19.

TYPE OF FILING 1990 Price Index and Pass-Through

NOTES Second revised sheet not approved; adjustments made to back out Regulatory Assessment Fee were incorrect; refund given on customers' bills.

EFFECTIVE DATE August 1, 1991



MICHAEL L. BREIT, EXECUTIVE DIRECTOR
ST. JOHNS COUNTY WATER AND SEWER AUTHORITY

WATER TARIFF