

RESOLUTION NO. 91-160

AN EMERGENCY RESOLUTION DECLARING A STATE OF EMERGENCY
IN THE UNRECORDED SUBDIVISION KNOWN AS EXECUTIVE COVE

BE IT RESOLVED AND DECLARED BY THE BOARD OF COUNTY
COMMISSIONERS AS FOLLOWS:

Section 1. The Board of County Commissioners of St. Johns County, Florida (the "Board") hereby finds and declares the following:

A. The unrecorded subdivision known as Executive Cove highlighted and shown on the attached Exhibit A (the subdivision) has encountered extensive flooding in the past 60 days and a threat exists for the health, safety and welfare of the 20 residents residing in the subdivision

B. The flooding conditions are subject to worsen as the rainy season continues.

C. The subdivision is flooded and the rising water has entered several of the residents homes, the septic tanks are not working properly and constitutes a menace to the health, safety and welfare of the residences in the subdivision.

D. The St. Johns County Health Department has posted signs warning the residence not to swim in the flooded area.

E. The weather forecast predicts the likelihood of additional heavy rains in the area of the subdivision.

F. A state of local emergency exists in the subdivision due to the continuing possibility of further flooding and the continuing deterioration of the septic tank systems.

G. It is necessary and appropriate for the County to take steps necessary to immediately try to relieve the flooding conditions in the subdivision.

H. Florida Statues 125.01(1)(j) authorizes the County to establish and administer flood and drainage control programs and to cooperate with governmental agencies and private enterprises in the development and operation of such programs.

I Chapter 252 Florida Statutes encourage Counties to take action necessary to alleviate local public emergencies.

Section 2. The St. Johns County Road and Bridge Department is hereby instructed to try and relieve the flooding conditions by ditching and pumping water in the subdivision to the County ditches along Fruit Cove Road.

Section 3. The St. Johns County Road and Bridge Department is authorized to do only such amount of work on the flooding conditions as is appropriate to allow the residence of the subdivision to return to there residences.

Section 4. The work authorized in Section 2 above is to be temporary to allow time to determine whether the County can and will implement an overall drainage plan to permanently alleviate the drainage problem in the subdivision.

Section 5. It is the desire of the Board of County Commissioners that the cost of the temporary alleviation of the flooding conditions authorized by Section 2 be included in the total assessments or additional taxes to be levied against property owners in the unrecorded Executive Cove Subdivision specially benefited or to be benefited by County improvements to the drainage if and when drainage non-ad valorem assessments or additional taxes are levied to finance such improvements.

PASSED AND ADOPTED THIS 8TH DAY OF OCTOBER 1991.

BOARD OF COUNTY COMMISSIONERS
OF ST. JOHNS COUNTY, FLORIDA

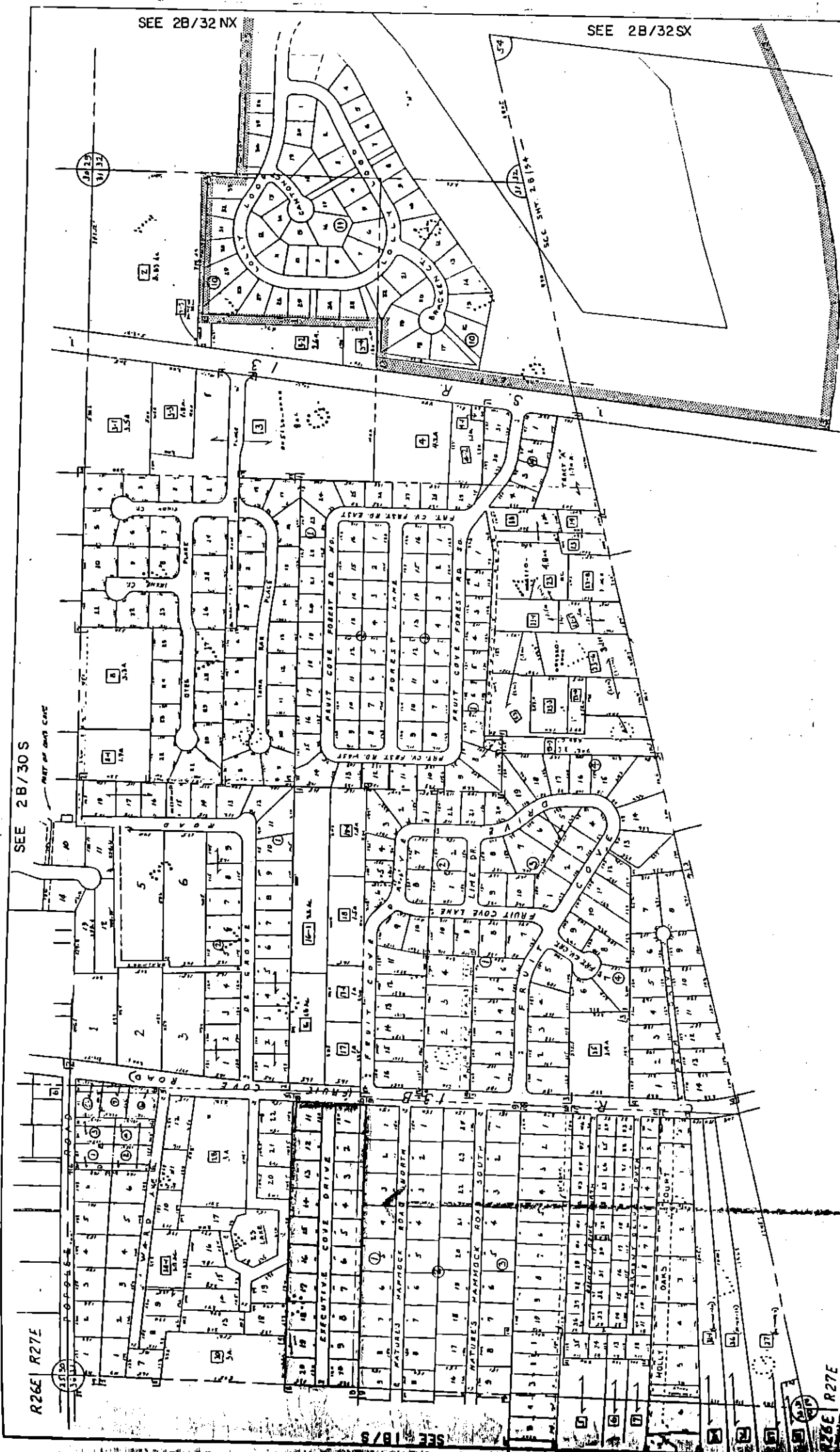
BY: *Donald W. Howard*

Its Chairman

ATTEST: CARL "BUD" MARKEL, CLERK

BY: *Patricia DeHarden*

Deputy Clerk



OVERLAYS N 1/2 AERIAL PHOTO # 5C

ASSESSMENT MAP	DATE	3/1/85
ST. JOHNS COUNTY, FLORIDA	SECTION	31
OFFICE OF PROPERTY APPRAISER	TOWNSHIP	28S
	RANGE	28E
	TRACT	18
	REVISION DATES	11/84
	PRINT	

SEE 2B/54

SECTION	TOWNSHIP	RANGE	TRACT	REVISION DATES	PRINT
31	28S	28E	18	11/84	
32	28S	28E	18	11/84	
33	28S	28E	18	11/84	
34	28S	28E	18	11/84	
35	28S	28E	18	11/84	
36	28S	28E	18	11/84	
37	28S	28E	18	11/84	
38	28S	28E	18	11/84	
39	28S	28E	18	11/84	
40	28S	28E	18	11/84	
41	28S	28E	18	11/84	
42	28S	28E	18	11/84	
43	28S	28E	18	11/84	
44	28S	28E	18	11/84	
45	28S	28E	18	11/84	
46	28S	28E	18	11/84	
47	28S	28E	18	11/84	
48	28S	28E	18	11/84	
49	28S	28E	18	11/84	
50	28S	28E	18	11/84	
51	28S	28E	18	11/84	
52	28S	28E	18	11/84	
53	28S	28E	18	11/84	
54	28S	28E	18	11/84	
55	28S	28E	18	11/84	
56	28S	28E	18	11/84	
57	28S	28E	18	11/84	
58	28S	28E	18	11/84	
59	28S	28E	18	11/84	
60	28S	28E	18	11/84	

EXHIBIT "A"