

RESOLUTION NO. 91- 165

AN EMERGENCY RESOLUTION DECLARING A STATE OF  
EMERGENCY FOR THE AREA SERVED BY PORTIONS OF  
USINA ROAD EXTENSION AND GREEN ACRES ROAD EXTENSION

BE IT RESOLVED AND DECLARED BY THE BOARD OF  
COMMISSIONERS AS FOLLOWS.

Section 1. The Board of County Commissioners of St. Johns County Florida (the "Board") hereby finds and declares the following.

A. The area contiguous to and including the portions of Usina Road Extension and Green Acres Road Extension highlighted and shown on the attached Exhibit "A" (the Roads) has encountered extensive flooding for the past 60 days and a threat exists for the health, safety and welfare of the residences who are served by this Roads.

B. The Roads conditions are subject to worsen as the rainy season continues.

C. The Roads are totally inaccessible by emergency vehicles and constitute a menace to the health, safety and welfare of the residence served by the Roads.

D. The water from heavy rains flowing out of the swamps and low areas are overflowing the ditches and flooding the Roads.

E. The weather forecast predicts the likelihood of additional heavy rains in the area of the Roads.

F. A state of local public emergency exists in the area served by the Roads.

G. It is necessary and appropriate for the County to take the necessary steps to immediately make the Roads passable for emergency vehicles.

H. Florida Statues 125.01 (1)(j) authorizes the County to establish and administer flood and drainage control programs and to cooperate with governmental agencies and private enterprise in development and operation of such programs.

I. Chapter 252 Florida Statues encourage Counties to take action necessary to alleviate local emergencies.

Section 2. The St. Johns County Road and Bridge Department is hereby instructed to grade the Roads, place and compact 50-50 mix and shell on the Roads and do such ditching as is necessary to make the Roads passable for emergency vehicles.

Section 3. The St. Johns County Road and Bridge Department is authorized to do only such amount of work on the Roads as is necessary to allow passage by emergency vehicles .

Section 4. The action and work authorized in Section 2 above are to be temporary to allow time for an overall drainage plan to be implemented for the Roads and the Road assessment or added tax paving program to be placed in effect.


Section 5. It is the desire of the Board of County Commissioners that the cost of repairing said Roads will be included in the total assessment or taxes to be levied against property owners specially benefited or to be benefited by County Improvements to the Roads when Roads non-ad valorem assessments or additional taxes are levied to finance such improvements.

PASSED AND ADOPTED THIS 8TH DAY OF OCTOBER 1991.

BOARD OF COUNTY COMMISSIONERS  
OF ST. JOHNS COUNTY FLORIDA

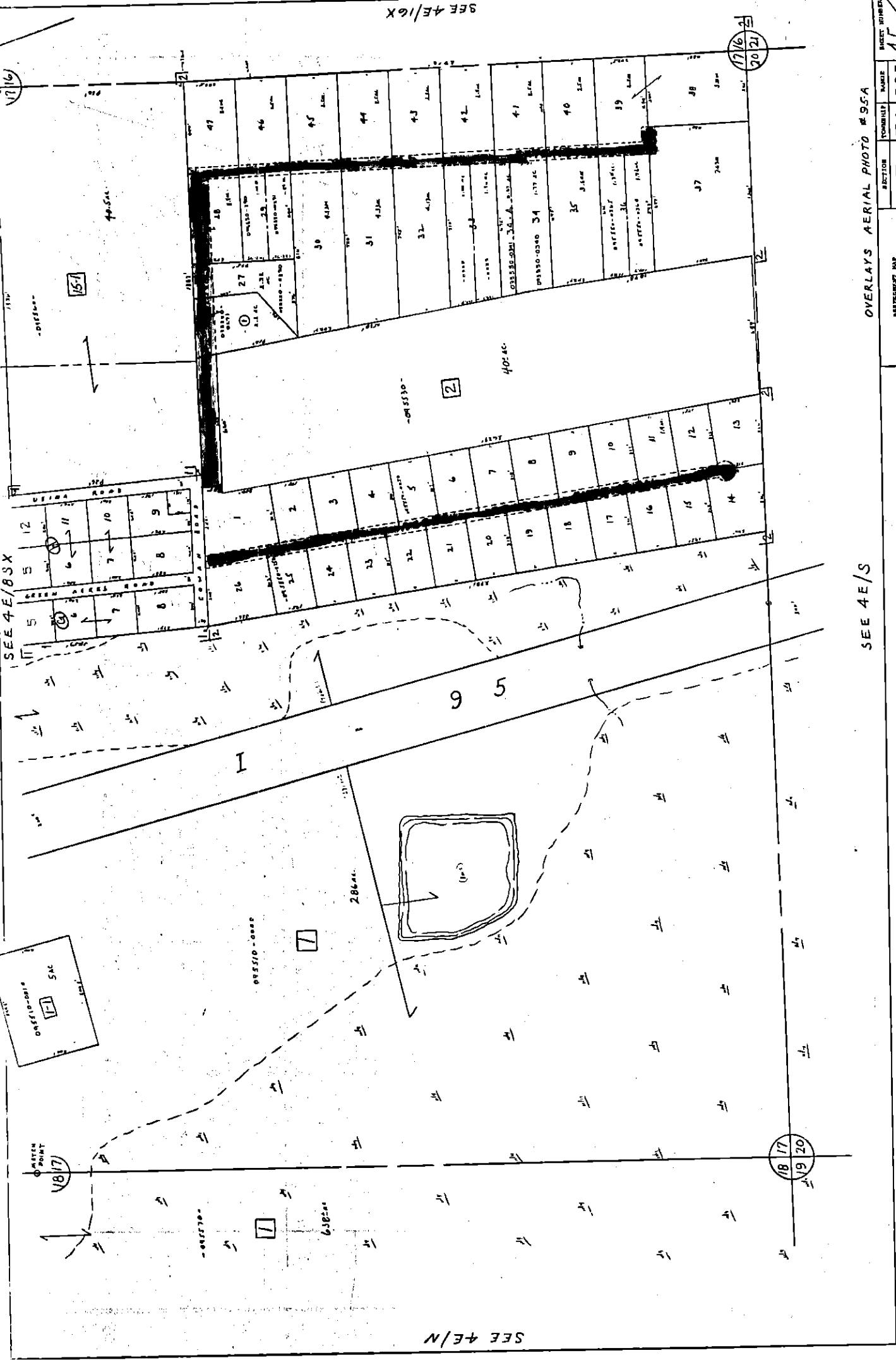
BY   
its Chairman

ATTEST: CARL "Bud" MARKEL, CLERK

BY   
Deputy Clerk

SEE 3E/N

SEE 4E/16X



OVERLAYS AERIAL PHOTO #95A

SEE 4E/S

SEE 4E/N

SECTION	TOWNSHIP	RANGE	SUBDIVISION INDEX
17	7S	29E	4E/17

ST. JOHNS COUNTY, FLORIDA  
 OFFICE OF PROPERTY APPRAISERS

309

NOTES: THIS MAP IS FOR ASSESSMENT PURPOSES ONLY. ST. JOHNS COUNTY PROPERTY APPRAISERS DOES NOT CLAIM DE ASSUME RESPONSIBILITY FOR "SURVEY" ACCURACY.

SUBDIVISION INDEX

MAP

GREEN ACRES ARTS - UNIT 2, 10 57

1 VANDERLIPS ACRES