

RESOLUTION NO. 93- 145  
RESOLUTION OF THE BOARD OF COUNTY  
COMMISSIONERS OF ST. JOHNS COUNTY, FLORIDA  
APPROVING A SUBDIVISION PLAT FOR  
MARSH CREEK UNIT TWO PHASE III

WHEREAS, Marsh Creek Partnership, a Florida general partnership, as Owner, has applied to the Board of County Commissioners of St. Johns County, Florida, for approval to record a subdivision plat known as Marsh Creek Unit Two Phase III.

NOW, THEREFORE BE IT RESOLVED BY THE BOARD OF COUNTY COMMISSIONERS OF ST. JOHNS COUNTY, FLORIDA, as follows:

Section 1. The above-described subdivision plat is conditionally approved by the Board of County Commissioners of St. Johns County, Florida subject to Section 4 and 5.

Section 2. A Construction Bond is not required.

Section 3. A Warranty Bond is not required.

Section 4. The approval and acceptance described in Section 1 shall not take effect until the Clerk has received a title opinion, certificate, or policy pertaining to the real property that is the subject of the aforementioned subdivision plat which opinion, certificate or policy has been approved by the County Attorney or Assistant County Attorney.

Section 5. The approval and acceptance described in Section 1 shall not take effect until the plat has been signed by each of the following departments, person or offices:

- a) Chairman or Vice-Chairman of the Board of County Commissioners of St. Johns County, Florida;
- b) Office of the County Attorney;
- c) County Planning and Zoning Department; and
- d) Clerk of Courts.

The Clerk shall not sign or accept the Plat for recording until it has been signed by each of the above persons or entities described in a) through c) above. If the plat is not signed and accepted by the Clerk for recording within 14 days from the date hereof, then the above-described conditional approval shall automatically terminate. If the plat is signed by the Clerk on or before such time, the conditions described herein shall be deemed to have been met.

ADOPTED by the Board of County Commissioners of St. Johns County, Florida, this 14th day of September, 1993.

BOARD OF COUNTY COMMISSIONERS  
OF ST. JOHNS COUNTY, FLORIDA

BY: Linna Babawaga  
Its Chair

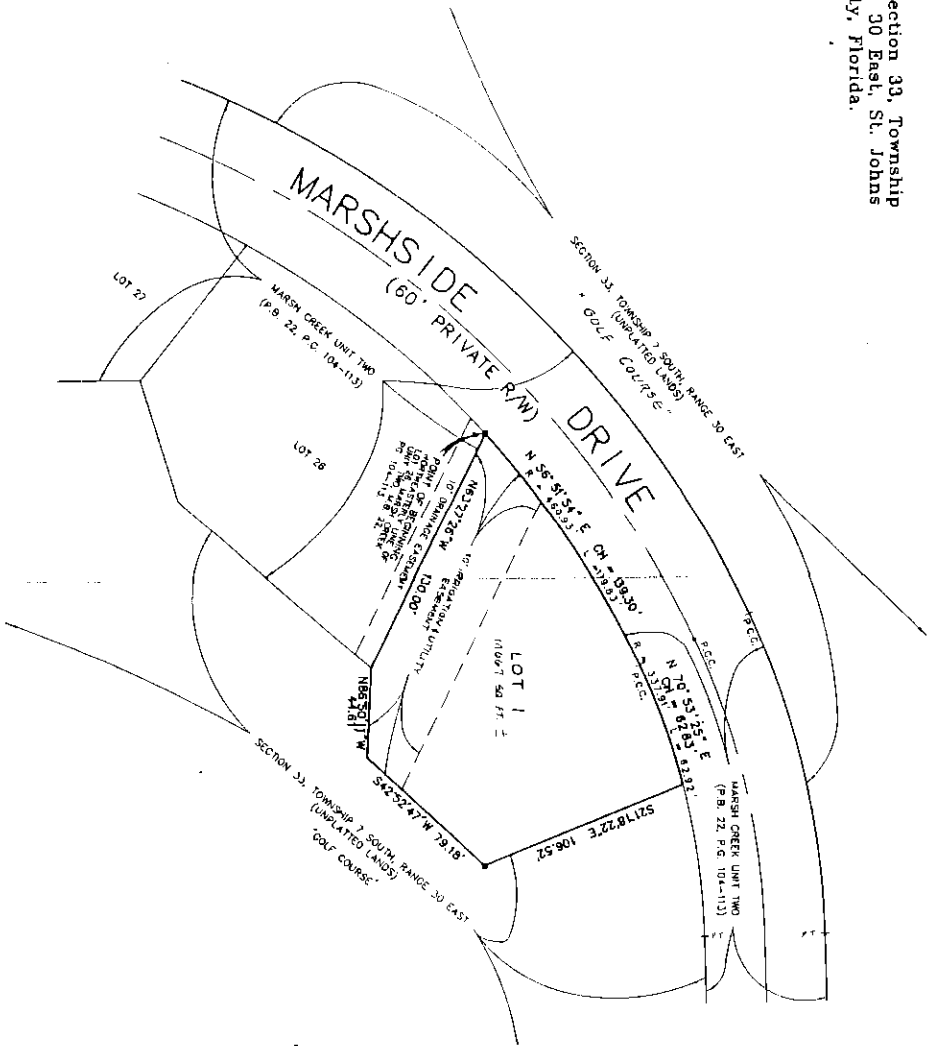
ATTEST:

Patricia A. Smith  
Deputy Clerk



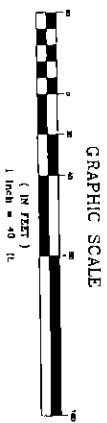
# MARSH CREEK UNIT TWO PHASE III

A Portion of Section 33, Township  
7 South, Range 30 East, St. Johns  
County, Florida.



MAP BOOK PAGE

SHEET 3 OF 3 SHEETS  
NOTE SEE SHEET 1 FOR GENERAL NOTES & LEGALS



Prepared by:  
**Clarity & Associates, Inc.**  
PROFESSIONAL LAND SURVEYORS  
1000 Central Expressway, Suite 2119  
Tallahassee, Florida 32310