

RESOLUTION NO. 93- 84
RESOLUTION OF THE BOARD OF COUNTY
COMMISSIONERS OF ST. JOHNS COUNTY, FLORIDA
DISCLAIMING INTEREST IN CERTAIN LANDS
DEDICATED TO ST. JOHNS COUNTY
LOCATED IN THE PLAT OF JULINGTON CREEK, UNIT ONE

WHEREAS, Atlantic Gulf Communities Corporation, ("Owner"), as owner, has applied to the Board of County Commissioners for approval to record a subdivision plat known as the Second Replat of Julington Creek Unit One.

WHEREAS, a portion of the land to be subjected to the Second Replat of Julington Creek , Unit One was previously dedicated to St. Johns County in that certain Plat of Julington Creek Unit One recorded in Map Book 16, pages 35-51 of the public records of St. Johns County, Florida, for the purposes of a drainage easement.

WHEREAS, Owner has requested that St. Johns County disclaim its interest in the portion of the drainage easement more fully described on Exhibit A and shown on Exhibit B, both of which exhibits are attached hereto and made a part hereof ("Disclaimed Land").

WHEREAS, The Board of Commissioners of St. Johns County has determined that it does not require the dedication of the Disclaimed Land for any County purpose.

NOW, THEREFORE, BE IT RESOLVED BY THE BOARD OF COUNTY COMMISSIONERS OF ST. JOHNS COUNTY, FLORIDA, as follows:

Section 1. The County hereby disclaims any and all interest in the Disclaimed Land because the Disclaimed Land serves no public purpose and declares that the Disclaimed Land may be held, occupied, transferred, conveyed and dedicated, free and clear of any interest of St. Johns County.

Section 2. The Board hereby approves the terms and conditions of the Disclaimer, a copy of which (without exhibits) is attached hereto and made a part hereof as Exhibit C and authorizes the Chairman to execute the Disclaimer on its behalf.

ADOPTED by the Board of County Commissioners of St. Johns County, Florida, this 11th day of May, 1993.

BOARD OF COUNTY COMMISSIONERS
OF ST. JOHNS COUNTY, FLORIDA

BY: Quinn Balserage
Its Chairman

Attest:

Carl "Bud" Markel, County Clerk

By: Yvonne Carter
Deputy Clerk

JAX-57352



EXHIBIT "A"

PART OF TRACT "G-4" WITHIN THE SECOND REPLAT
JULINGTON CREEK UNIT ONE

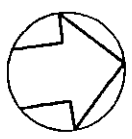
PART OF TRACT "G-4" OF JULINGTON CREEK UNIT ONE, AS RECORDED IN MAP BOOK 16, PAGES 35 THROUGH 51 INCLUSIVE OF THE PUBLIC RECORDS OF ST. JOHNS COUNTY, FLORIDA, ALSO BEING A PART OF SECTION 32, TOWNSHIP 4 SOUTH, RANGE 27 EAST, OF SAID COUNTY, MORE PARTICULARLY DESCRIBED AS FOLLOWS: FOR A POINT OF BEGINNING, COMMENCE AT THE SOUTHEAST CORNER OF TRACT "P" OF SAID JULINGTON CREEK UNIT ONE, SAID POINT LYING ON THE WESTERLY RIGHT-OF-WAY LINE OF DURBIN CREEK BOULEVARD (A 200 FOOT RIGHT-OF-WAY BY PLAT): THENCE NORTH 84°16'44" WEST LEAVING SAID WESTERLY RIGHT-OF-WAY LINE OF DURBIN CREEK BOULEVARD, A DISTANCE OF 682.00 FEET; THENCE NORTH 75°44'50" WEST, A DISTANCE OF 292.00 FEET; THENCE NORTH 52°29'52" WEST ALONG A LINE TO ITS INTERSECTION WITH THE SOUTHERLY LINE OF SAID TRACT "P", A DISTANCE OF 88.68 FEET; THENCE SOUTH 75°44'50" EAST CONTINUING ALONG SAID LINES OF SAID TRACT "P", A DISTANCE OF 570.55 FEET; THENCE SOUTH 85°49'17" EAST CONTINUING ALONG LINES OF SAID TRACT "P", A DISTANCE OF 215.61 FEET; THENCE NORTH 53°49'49" EAST CONTINUING ALONG LINES OF SAID TRACT "P", A DISTANCE OF 180.28 FEET; THENCE NORTH 87°31'13" EAST CONTINUING ALONG LINES OF TRACT "P", A DISTANCE OF 25.00 FEET; THENCE SOUTH 36°27'57" EAST CONTINUING ALONG LINES OF SAID TRACT "P", A DISTANCE OF 141.42 FEET; THENCE SOUTH 16°36'54" EAST CONTINUING ALONG LINES OF SAID TRACT "P", A DISTANCE OF 32.80 FEET TO THE POINT OF BEGINNING.

CONTAINING BY CALCULATIONS PERFORMED BY NORTHEAST FLORIDA SURVEYORS, DATED APRIL 30, 1993, 0.88 ACRES MORE OR LESS.

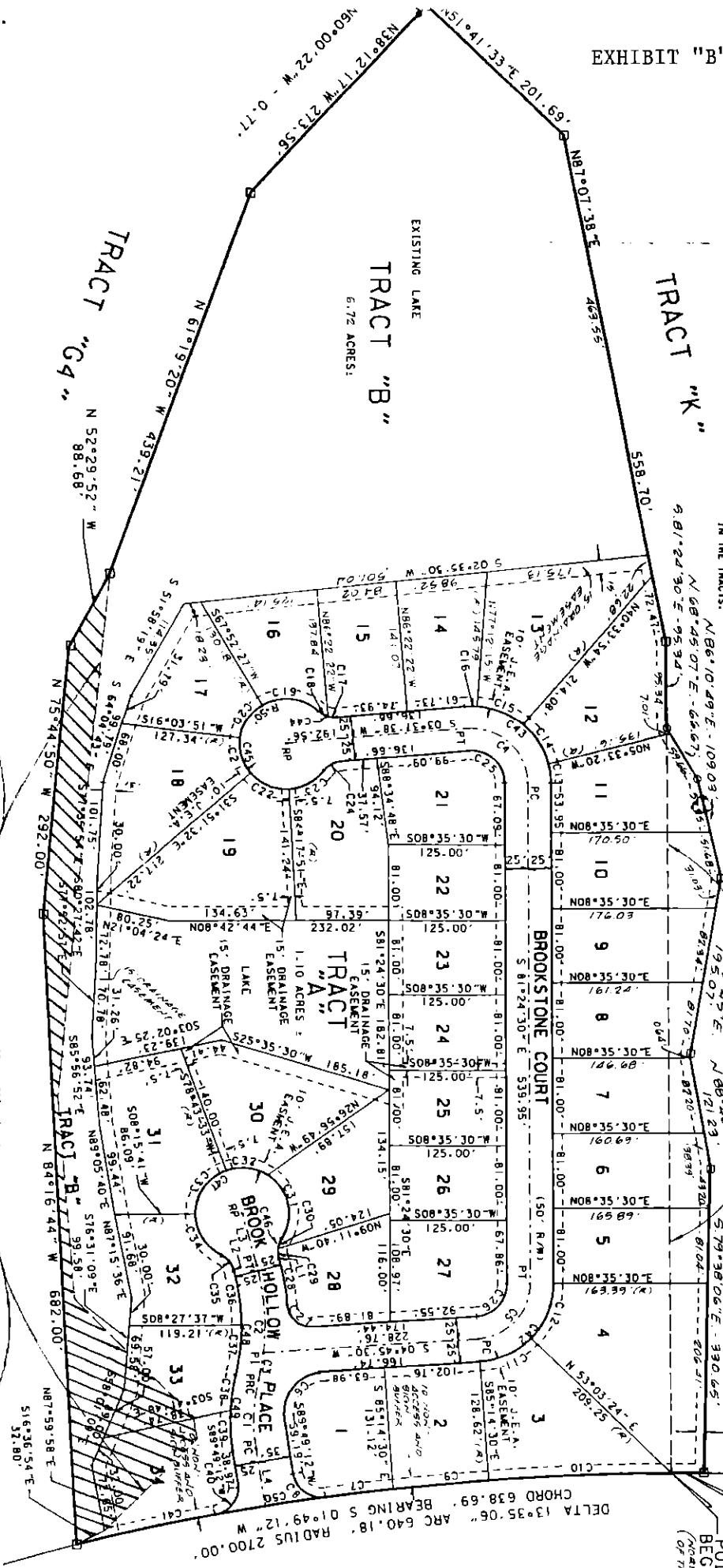
R11.A4

DAVIS

EXHIBIT "B"



SCALE: 1" = 100'
100
200
400



- 14. THERE IS A 10 FOOT 1/4" E.A. EASEMENT AS SHOWN HEREON LYING ON THE LOTS AND ADJACENT TO THE RIGHTS OF WAY FOR THE INSTALLATION, MAINTENANCE AND REPAIR OF ELECTRICAL EQUIPMENT BY THE JACKSONVILLE ELECTRIC AUTHORITY.
- 15. THIS PROPERTY APPEARS TO LIE IN FLOOD ZONE "C" WHICH IS AN AREA OF MINIMAL FLOODING ACCORDING TO THE MAPS FILED IN THE PUBLIC RECORDS OF ST. JOHNS COUNTY, FLORIDA, DATED 5-15-85.
- 16. THE 10' BALL RETRIEVAL EASEMENT SHOWN ON THE PLAT IS FOR THE RETRIEVAL OF ENRANT GOLF THE ST. JOHNS RIVER METRO MANAGEMENT DISTRICT AND ON THE ADJACENT COURSE DURING THE OPERATING HOURS OF THE ADJACENT GOLF COURSE PURSUANT TO THAT CERTAIN ENRANT GOLF EASEMENT RECORDED IN THE PUBLIC RECORDS OF ST. JOHNS COUNTY, FLORIDA.
- 17. THE PORTION OF THE CAPTIONED LOTS WHICH CONSTITUTE DEFINITION OF THE PUBLIC RECORDS OF ST. JOHNS COUNTY, FLORIDA, PAGES 15-51 OF THE PUBLIC RECORDS OF ST. JOHNS COUNTY, FLORIDA WERE DEDICATED TO ST. JOHNS COUNTY BY ACCEPTANCE OF THIS MAP, AT AND DISTRICT RECORD 115 INTEREST IN THE TRACT.

POINT OF BEGINNING (NORTH-EAST CORNER OF TRACT "K")

DELTA 00°40'45" BEARING S 08°08' BEARING S 08°08'

DELTA 13°35'06" BEARING S 01°49'12" W

CHORD 638.69' RADIUS 2700.00'

LINE	BEARING	DISTANCE
1	S 83°34'12" W	21.00'
2	S 83°34'12" W	31.00'
3	S 83°24'12" W	31.00'
4	S 83°24'12" W	31.00'
5	S 83°24'12" W	31.00'
6	S 83°24'12" W	31.00'
7	S 83°24'12" W	31.00'
8	S 83°24'12" W	31.00'
9	S 83°24'12" W	31.00'
10	S 83°24'12" W	31.00'
11	S 83°24'12" W	31.00'
12	S 83°24'12" W	31.00'
13	S 83°24'12" W	31.00'
14	S 83°24'12" W	31.00'
15	S 83°24'12" W	31.00'
16	S 83°24'12" W	31.00'
17	S 83°24'12" W	31.00'
18	S 83°24'12" W	31.00'
19	S 83°24'12" W	31.00'
20	S 83°24'12" W	31.00'
21	S 83°24'12" W	31.00'
22	S 83°24'12" W	31.00'
23	S 83°24'12" W	31.00'
24	S 83°24'12" W	31.00'
25	S 83°24'12" W	31.00'
26	S 83°24'12" W	31.00'
27	S 83°24'12" W	31.00'
28	S 83°24'12" W	31.00'
29	S 83°24'12" W	31.00'
30	S 83°24'12" W	31.00'
31	S 83°24'12" W	31.00'
32	S 83°24'12" W	31.00'
33	S 83°24'12" W	31.00'

DURBIN CREEK BOULEVARD (1200' R/W BY PLAT)

EXHIBIT "C"

**DISCLAIMER OF INTEREST
PARCEL OF PLATTED LANDS
JULINGTON CREEK, UNIT ONE**

THIS DISCLAIMER is made this ___ day of _____, 1993, by the **BOARD OF COUNTY COMMISSIONERS OF ST. JOHNS COUNTY, FLORIDA** (the "Board").

RECITALS:

A. Pursuant to the plat dedication set forth in the plat of Julington Creek, Unit One according to plat thereof recorded in Map Book 16, pages 35-51 of the public records of St Johns County, Florida, Tract G4 was dedicated to St. Johns County, Florida, for a drainage easement.

B. Atlantic Gulf Communities Corporation, a Delaware corporation, authorized to do business in Florida has requested the Board to disclaim St. Johns County's interest in a portion of Tract G4, which parcel is more fully described in Exhibit A as shown on Exhibit B, both of which exhibits are attached hereto and made a part hereof ("Disclaimed Land").

C. The Board of County Commissioners has determined that its interest in the Disclaimed Land serves no County purpose.

NOW THEREFORE, in consideration of the premises and other good and valuable consideration, receipt and adequacy of which is hereby acknowledged, the Board of County Commissioners, through its duly authorized Chairman, hereby disclaims any and all interest it has in the Disclaimed Land and declares that the Disclaimed Land may be occupied, held, conveyed or dedicated free and clear of any interest of St. Johns County.

IN WITNESS WHEREOF, the undersigned sets its hand and seal on the date first above written.

**BOARD OF COUNTY COMMISSIONERS
OF ST. JOHNS COUNTY, FLORIDA**

By: _____
Print Name _____
Its _____ Chair

Attest:
Carl "Bud" Markel, County Clerk

By: _____
Print Name _____
Deputy Clerk

STATE OF FLORIDA
COUNTY OF ST. JOHNS

The foregoing instrument was acknowledged before me this ___ day of _____, 1993, by _____, Chair of the Board of County Commissioners, St. Johns County, Florida, and attested to by _____, Deputy Clerk, on behalf of St. Johns County, Florida, who are personally known to me and who did not take an oath.

Print Name: _____
Notary Public
My Commission Expires: _____
Commission No. _____