

RESOLUTION NO. 94- 04
RESOLUTION OF THE BOARD OF COUNTY
COMMISSIONERS OF ST. JOHNS COUNTY, FLORIDA
APPROVING A SUBDIVISION PLAT FOR
SEA PLACE III UNIT C

WHEREAS, North Crescent Beach, Ltd., a Florida limited partnership, as owner, has applied to the Board of County Commissioners of St. Johns County, Florida, for approval to record a subdivision plat known as Sea Place III Unit C.

NOW, THEREFORE BE IT RESOLVED BY THE BOARD OF COUNTY COMMISSIONERS OF ST. JOHNS COUNTY, FLORIDA, as follows:

Section 1. The above-described subdivision plat and areas dedicated to the County depicted thereon are conditionally approved and accepted by the Board of County Commissioners of St. Johns County, Florida subject to Section 4 and 5.

Section 2. The Construction Bond is set in the amount of \$37,075.00 and shall be delivered to the Clerk of Courts and approved by him prior to recording the plat.

Section 3. A Warranty Bond is not required.

Section 4. The approval and acceptance described in Section 1 shall not take effect until the Clerk has received a title opinion, certificate, or policy pertaining to the real property that is the subject of the aforementioned subdivision plat which opinion, certificate or policy has been approved by the County Attorney or Assistant County Attorney.

Section 5. The approval and acceptance described in Section 1 shall not take effect until the plat has been signed by each of the following departments, person or offices:

- a) Chairman or Vice-Chairman of the Board of County Commissioners of St. Johns County, Florida;
- b) Office of the County Attorney;
- c) County Planning and Zoning Department; and
- d) Clerk of Courts.

The Clerk shall not sign or accept the Plat for recording until it has been signed by each of the above persons or entities described in a) through c) above. If the plat is not signed and accepted by the Clerk for recording within 14 days from the date hereof, then the above-described conditional approval shall automatically terminate. If the plat is signed by the Clerk on or before such time, the conditions described herein shall be deemed to have been met.

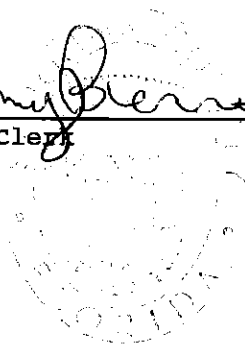
ADOPTED by the Board of County Commissioners of St. Johns County, Florida, this 11th day of January, 1994.

BOARD OF COUNTY COMMISSIONERS
OF ST. JOHNS COUNTY, FLORIDA

BY: DeLan Roberts
Its Chair

ATTEST:

Amy Berne
Deputy Clerk

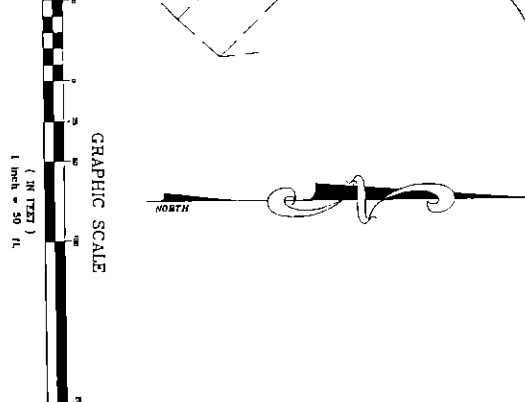
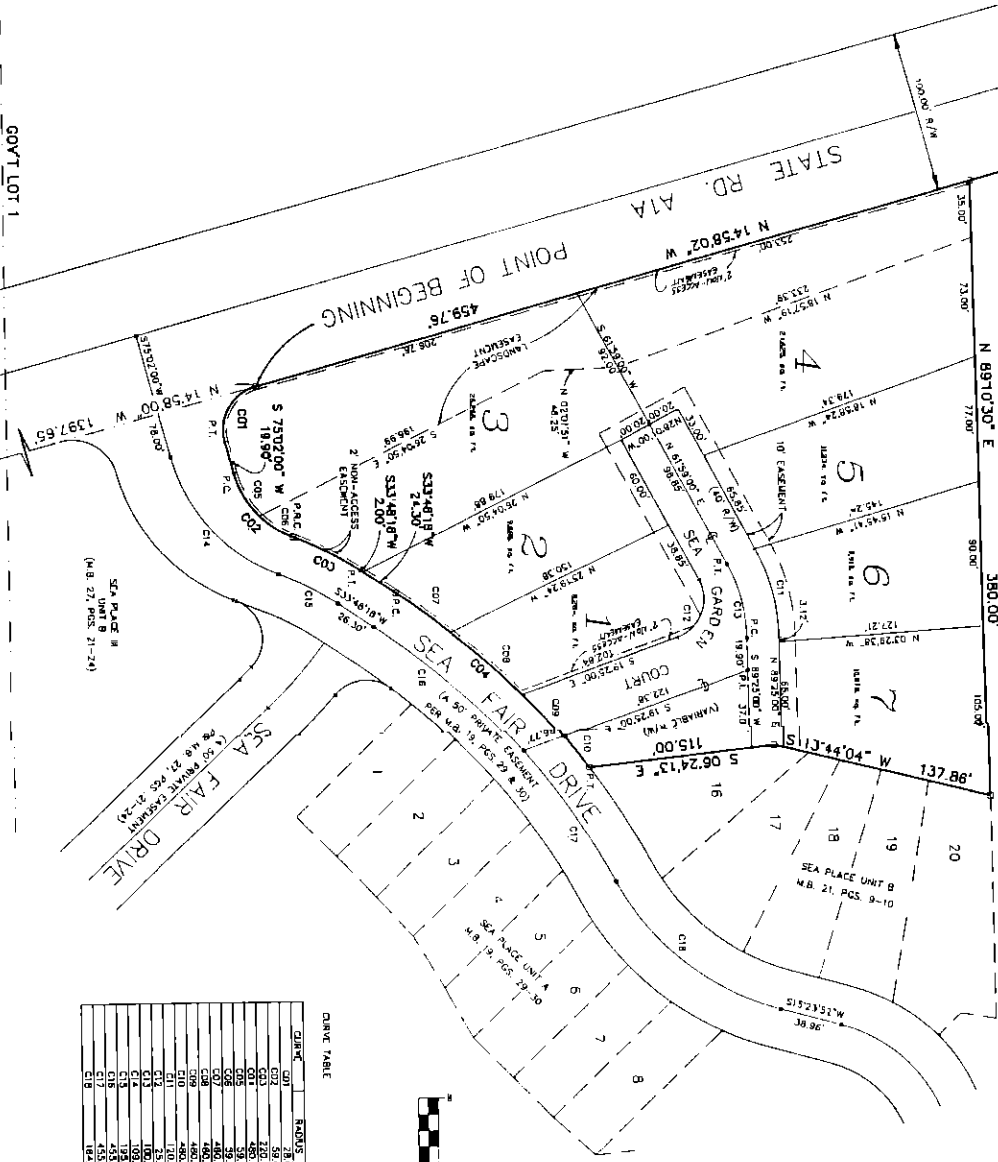


SEA PLACE III UNIT C

A PORTION OF GOVERNMENT LOT 1, SECTION 15, TOWNSHIP 8 SOUTH, RANGE 30 EAST, ST. JOHNS COUNTY, FLORIDA.

MAP BOOK PAGE

SHEET 3 OF 3 SHEETS
SEE SHEET 1 FOR GENERAL NOTES & LEGEND



DRIVE TABLE

DRIVE	ROD	LENGTH	LANE	CHORD	BEARING	AREA
C01	28.00'	41.98'	28.00'	38.89'	S 59°53'00" E	910.00'
C02	59.65'	55.55'	29.37'	51.57'	N 48°11'12" E	321.71'
C03	420.02'	46.80'	63.38'	161.80'	S 43°30'59" W	221.71'
C04	59.85'	31.20'	16.02'	36.94'	N 58°53'58" E	197.81'
C05	59.65'	31.20'	16.02'	36.94'	N 21°06'01" W	197.81'
C06	420.02'	46.80'	63.38'	161.80'	S 43°30'59" W	221.71'
C07	420.02'	46.80'	63.38'	161.80'	S 43°30'59" W	221.71'
C08	420.02'	46.80'	63.38'	161.80'	S 43°30'59" W	221.71'
C09	420.02'	46.80'	63.38'	161.80'	S 43°30'59" W	221.71'
C10	420.02'	46.80'	63.38'	161.80'	S 43°30'59" W	221.71'
C11	420.02'	46.80'	63.38'	161.80'	S 43°30'59" W	221.71'
C12	420.02'	46.80'	63.38'	161.80'	S 43°30'59" W	221.71'
C13	420.02'	46.80'	63.38'	161.80'	S 43°30'59" W	221.71'
C14	420.02'	46.80'	63.38'	161.80'	S 43°30'59" W	221.71'
C15	420.02'	46.80'	63.38'	161.80'	S 43°30'59" W	221.71'
C16	420.02'	46.80'	63.38'	161.80'	S 43°30'59" W	221.71'
C17	420.02'	46.80'	63.38'	161.80'	S 43°30'59" W	221.71'
C18	420.02'	46.80'	63.38'	161.80'	S 43°30'59" W	221.71'
C19	420.02'	46.80'	63.38'	161.80'	S 43°30'59" W	221.71'
C20	420.02'	46.80'	63.38'	161.80'	S 43°30'59" W	221.71'

POINT OF COMMENCEMENT

GOVT LOT 1
GOVT LOT 4

CASTLE
N/W CORNER

DRIVE DATA
STREET
L-1111' W
A-0700' S
1-44-00'

SEA PLACE A
(H.B. 21, P.C.S. 21-24)

SEA PLACE B
H.B. 21, P.C.S. 9-10

SEA PLACE UNIT A
H.B. 21, P.C.S. 23-29

SEA PLACE UNIT B
H.B. 21, P.C.S. 9-10

