

lec 16
Sur - 65.00
8.50

RESOLUTION NO. 94- 116

RESOLUTION OF THE BOARD OF COUNTY COMMISSIONERS
OF THE COUNTY OF ST. JOHNS, STATE OF FLORIDA,
VACATING A PORTION OF THE PLAT OF JULINGTON CREEK UNIT TWO

WHEREAS, a Petition has been filed by the qualified landowners (St. Johns County and Julington Creek Development Company, hereinafter "landowners") to vacate a portion of a certain subdivision plat hereinafter described; and

WHEREAS, Notice of the intent to request the vacation has been duly published and Proof of Publication has been filed with this Board; and

WHEREAS, it appears that there are no objections and the facts contained in the Petition are true;

NOW THEREFORE, in consideration of the premises, be it resolved by the Board of County Commissioners of St. Johns County, Florida, as follows:

1. Those portions of the Plat of Julington Creek Unit Two, as recorded in Map Book 16, pages 52 through 63, of the public records of St. Johns County, Florida, lying within the following described parcels:

(a) The land owned by Atlantic Gulf Communities Corporation described on Exhibit "A" attached hereto; and

(b) The land owned by the County of St. Johns, State of Florida, commonly known as the "Mill

In BCC Secty

Let - Holland & Knight
50 N. LAURA ST. # 3900
JAX, FL. 32202

Park extension", described on Exhibit "B" attached hereto;

(taken together, the "Property), is hereby vacated and all streets situated therein are hereby vacated and abandoned, none of which have become highways necessary for use by the traveling public, and this Board hereby renounces and disclaims any right of St. Johns County and the public, which is solely established by virtue of the recorded Plat of Julington Creek Unit Two, in and to the Property, easements, stormwater drainage easements and streets situated therein; such Property, easements, stormwater drainage easements and streets being returned into acreage. However, the "landowners" individually retain and shall acquire all ownership, interests, and rights to that real property underlying the vacated portion of said plat to which they hold title to prior to the vacation or acquire by virtue of being adjoining property owners. Such rights shall include but not be limited to, St. Johns County's retention of ownership and other rights in real property underlying in roads, streets, or alleys in the Mill Park extension described in Exhibit "B" hereto.

2. A certified copy of this Resolution shall be filed in the offices of the Clerk of Circuit Court and duly recorded in the public records of St. Johns County, Florida.

O.R. 1064 PG 1454

3. The applicant shall pay all recording costs.

DATED this 28 day of June, 1994.

BOARD OF COUNTY COMMISSIONERS,
ST. JOHNS COUNTY

By: Debra Roberts
Chairperson

ATTEST: CARL "BUD" MARKEL, CLERK

By: Isma Sacetti
Deputy Clerk

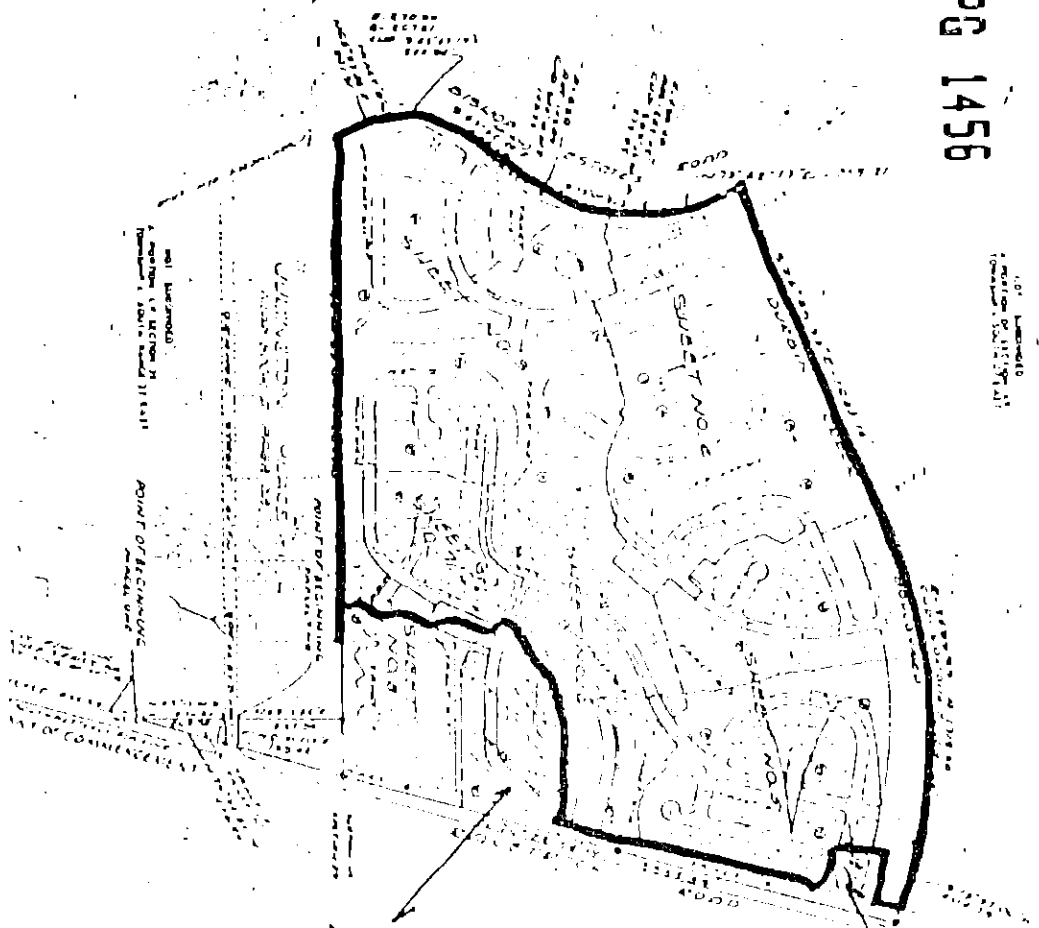
O.R. 1064 PG 1455

JULINGTON CREEK UNIT TWO
 A PART OF SECTION 29 AND A PART OF THE JAMES JAMES GRANT,
 SECTION 49, TOWNSHIP 4 SOUTH, RANGE 21 EAST, ST. JAMES COUNTY, FLORIDA.

MAP BOOK PAGE 44

SHEET 2 OF 12 SHEETS
 500' LONG THIS UNIT

O. R. 1064 PG 1456



*Subject
 Site of
 Request*

*Part of this
 Request*

BOUNDARY & AREA MAP

SECTION 29 AND A PART OF THE JAMES JAMES GRANT, SECTION 49, TOWNSHIP 4 SOUTH, RANGE 21 EAST, ST. JAMES COUNTY, FLORIDA.

BOUNDARY AND AREA MAP

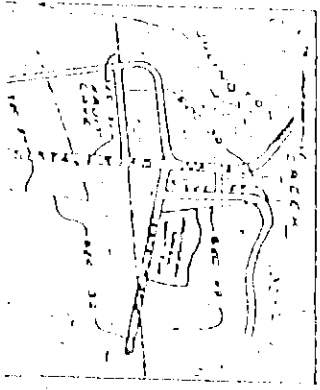


EXHIBIT "A"

PARCEL 2:

A part of the James James Donation, Section 49, Township 4 South, Range 27 East, St. Johns County, Florida, being a part of Julington Creek Unit Two, as recorded in Map Book 16, pages 52 through 63, inclusive, of the public records of St. Johns County, Florida, being more particularly described as follows:

For a Point of Reference, commence at a point on the Northerly right-of-way line of Racetrack Road (a 66 foot right-of-way as now established), said point being the Southeasterly corner of said Julington Creek Unit Two and the Southwesterly corner of Julington Creek Unit Three, as recorded in Map Book 16, pages 64 through 88, inclusive, of the public records of St. Johns County, Florida; thence North $13^{\circ}37'06''$ East, leaving said Northerly right-of-way line of Racetrack Road, a distance of 67.00 feet; thence North $76^{\circ}22'54''$ West, a distance of 200.00 feet to the Point of Beginning; thence North $50^{\circ}29'18''$ East, a distance of 125.00 feet; thence North $13^{\circ}37'06''$ East, a distance of 134.65 feet; thence North $78^{\circ}22'53''$ West, a distance of 313.11 feet; thence South $08^{\circ}37'07''$ West, a distance of 224.58 feet; thence South $76^{\circ}22'54''$ East, a distance of 218.45 feet to the Point of Beginning.

PARCEL 1:

PART OF BLOCKS 31, 32, 33 AND 37 TOGETHER WITH PART OF TRACT "G-7", JULINGTON CREEK UNIT TWO AS RECORDED IN MAP BOOK 16, PAGES 52 THROUGH 63 OF THE PUBLIC RECORDS OF ST. JOHNS COUNTY, FLORIDA, LYING IN THE JAMES JAMES GRANT, SECTION 49, TOWNSHIP 4 SOUTH, RANGE 27 EAST, ST. JOHNS COUNTY, FLORIDA, MORE PARTICULARLY DESCRIBED AS FOLLOWS: FOR A POINT OF REFERENCE COMMENCE AT THE INTERSECTION OF THE WEST LINE OF SAID SECTION 49 WITH THE NORTHEASTERLY RIGHT-OF-WAY LINE OF RACETRACK ROAD (A 66 FOOT RIGHT-OF-WAY AS NOW ESTABLISHED): THENCE NORTH 00°55'04" WEST LEAVING SAID NORTHEASTERLY RIGHT-OF-WAY LINE AND ALONG SAID WEST LINE, A DISTANCE OF 668.06 FEET TO THE POINT OF BEGINNING; THENCE NORTH 00°55'04" WEST CONTINUING ALONG SAID WEST LINE, A DISTANCE OF 226.67 FEET TO A POINT LYING ON A U.S. ARMY CORPS OF ENGINEERS JURISDICTIONAL LINE; THENCE ALONG SAID JURISDICTIONAL LINE RUN THE FOLLOWING 36 COURSES: (1) THENCE SOUTH 56°02'25" EAST LEAVING SAID WEST LINE, A DISTANCE OF 24.13 FEET; (2) THENCE SOUTH 59°20'49" EAST, A DISTANCE OF 31.89 FEET; (3) THENCE SOUTH 80°20'42" EAST, A DISTANCE OF 29.84 FEET; (4) THENCE SOUTH 36°38'25" EAST, A DISTANCE OF 33.94 FEET; (5) THENCE NORTH 73°39'03" EAST, A DISTANCE OF 26.92 FEET; (6) THENCE SOUTH 65°58'48" EAST, A DISTANCE OF 47.69 FEET; (7) THENCE SOUTH 88°10'27" EAST, A DISTANCE OF 39.87 FEET; (8) THENCE SOUTH 61°48'18" EAST, A DISTANCE OF 43.63 FEET; (9) THENCE NORTH 83°58'54" EAST, A DISTANCE OF 47.94 FEET; (10) THENCE SOUTH 81°45'39" EAST, A DISTANCE OF 37.05 FEET; (11) THENCE NORTH 87°22'36" EAST, A DISTANCE OF 30.94 FEET; (12) THENCE SOUTH 74°20'23" EAST, A DISTANCE OF 36.08 FEET; (13) THENCE SOUTH 80°04'18" EAST, A DISTANCE OF 32.68 FEET; (14) THENCE SOUTH 55°16'53" EAST, A DISTANCE OF 37.22 FEET; (15) THENCE SOUTH 88°47'02" EAST, A DISTANCE OF 30.89 FEET; (16) THENCE NORTH 67°57'32" EAST, A DISTANCE OF 30.95 FEET; (17) THENCE SOUTH 70°49'52" EAST, A DISTANCE OF 32.31 FEET; (18) THENCE NORTH 05°19'35" EAST, A DISTANCE OF 24.09 FEET; (19) THENCE NORTH 74°39'33" EAST, A DISTANCE OF 30.82 FEET; (20) THENCE SOUTH 29°02'03" EAST, A DISTANCE OF 18.11 FEET; (21) THENCE SOUTH 68°53'28" EAST, A DISTANCE OF 27.28 FEET; (22) THENCE NORTH 75°21'11" EAST, A DISTANCE OF 30.78 FEET; (23) THENCE SOUTH 63°24'34" EAST, A DISTANCE OF 31.90 FEET; (24) THENCE NORTH 86°45'30" EAST, A DISTANCE OF 47.81 FEET; (25) THENCE SOUTH 29°30'40" EAST, A DISTANCE OF 25.07 FEET; (26) THENCE SOUTH 30°40'48" EAST, A DISTANCE OF 24.61 FEET; (27) THENCE NORTH 40°31'55" EAST, A DISTANCE OF 39.99 FEET; (28) THENCE NORTH 25°03'11" EAST, A DISTANCE OF 25.26 FEET; (29) THENCE SOUTH 57°39'51" EAST, A DISTANCE OF 31.14 FEET; (30) THENCE NORTH 78°40'53" EAST, A DISTANCE OF 29.51 FEET; (31) THENCE NORTH 26°51'41" EAST, A DISTANCE OF 25.22 FEET; (32) THENCE SOUTH 88°27'42" EAST, A DISTANCE OF 26.56 FEET; (33) THENCE SOUTH 27°53'32" EAST, A DISTANCE OF 20.97 FEET; (34) THENCE SOUTH 21°17'49" WEST, A DISTANCE OF 35.09 FEET; (35) THENCE SOUTH 30°33'31" EAST, A DISTANCE OF 72.18 FEET; (36) THENCE NORTH 76°55'43" EAST, A DISTANCE OF 24.88 FEET; THENCE SOUTH 28°38'26" EAST LEAVING SAID JURISDICTIONAL LINE AND ALONG A LINE TO ITS INTERSECTION WITH A U.S. ARMY CORPS OF ENGINEERS JURISDICTIONAL LINE, A DISTANCE OF 161.46 FEET; THENCE ALONG SAID JURISDICTIONAL LINE RUN THE FOLLOWING 11 COURSES: (1) THENCE SOUTH 14°52'07" WEST, A DISTANCE OF 25.56 FEET; (2) THENCE SOUTH 42°38'57" EAST, A DISTANCE OF 23.96 FEET; (3) THENCE SOUTH 12°10'26" EAST, A DISTANCE OF 40.18 FEET; (4) THENCE SOUTH 66°57'48" EAST, A DISTANCE OF 28.75 FEET; (5) THENCE SOUTH 20°39'46" EAST, A DISTANCE OF 27.23 FEET; (6) THENCE SOUTH 36°30'05" EAST, A DISTANCE OF 44.12 FEET; (7) THENCE SOUTH 38°07'03" WEST, A DISTANCE OF 20.38 FEET; (8) THENCE SOUTH 11°09'23" WEST, A DISTANCE OF 14.12 FEET; (9) THENCE NORTH 80°46'33" EAST, A DISTANCE OF 11.48 FEET; (10) THENCE SOUTH 56°01'56" EAST, A DISTANCE OF 17.13 FEET; (11) THENCE SOUTH 63°51'22" EAST, A DISTANCE OF 16.43 FEET; THENCE SOUTH 00°55'04" EAST LEAVING SAID JURISDICTIONAL LINE AND ALONG A LINE TO ITS INTERSECTION WITH THE NORTHEASTERLY LINE OF TRACT "B" OF SAID JULINGTON CREEK UNIT TWO, A DISTANCE OF 576.51 FEET; THENCE NORTH 76°22'54" WEST ALONG SAID NORTHEASTERLY LINE OF TRACT "B", A DISTANCE OF 549.26 FEET TO THE SOUTHEAST CORNER OF TRACT "H" OF SAID JULINGTON CREEK UNIT TWO; THENCE NORTH 00°55'04" WEST LEAVING SAID NORTHEASTERLY LINE OF SAID TRACT "B" AND ALONG THE EASTERLY LINE OF SAID TRACT "H", A DISTANCE OF 741.47 FEET TO THE NORTHEAST CORNER THEREOF; THENCE SOUTH 89°04'56" WEST ALONG A NORTH LINE OF SAID TRACT "H", A DISTANCE OF 550.00 FEET, TO THE POINT OF

Howl J. Rums
6/28/94

COMMONWEALTH LAND TITLE INSURANCE COMPANY
A Reliance Group Holdings Company
Suite 230
4161 Carmichael Avenue
Jacksonville, Florida 32207
904-396-2855
FAX 396-4233

O.R. 1064 PG 1459

June 27, 1994

Ms. Kathryn M. Carrigg
Holland & Knight
2000 Independent Square
Jacksonville, Florida 32202

RE: Ownership
FILE NO. JX94-1659A

Dear Ms. Carrigg:

As requested, we have searched our title plant covering the public records of St. Johns County, Florida, pertaining to the following described property:

See Legal Description Attached (Exhibit "A")

Pursuant to this Search, through a period ending: June 23, 1994 at 5:00 P.M., we hereby certify the following:

Last record for simple title holder in St. Johns County was to Parcel One; and Atlantic Salt Communities Corporation formerly known as General Level plant Corporation, a Delaware corporation was to Parcel Two

The foregoing report is prepared and intended for informational only, and not intended to constitute or imply any form of warranty, guaranty, insurance, or similar assurance as to the status of title, and no determination has been made as to the validity of any deed or other instrument described or referred to herein. The search is for the purpose of determining applicable public records and is limited to the apparent record owner as shown herein. No attempt has been made to determine whether the land is subject to liens or encumbrances which are not shown as existing liens by the public records. The Company's liability hereunder shall not exceed the cost of this report, which shall not exceed \$100.00.

THIS REPORT SHALL NOT BE USED AS A BASIS FOR ANY OTHER TITLE INSURANCE OR FOR LITIGATION.

COMMONWEALTH LAND TITLE INSURANCE COMPANY

BY: Robert C. Evans

EXHIBIT "A"

Parcel One:

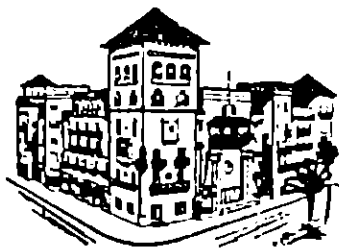
PART OF BLOCKS 31, 32, 33 AND 37 TOGETHER WITH PART OF TRACT "C-1", JULINGTON CREEK UNIT TWO AS RECORDED IN MAP BOOK 16, PAGES 52 THROUGH 53 OF THE PUBLIC RECORDS OF ST. JOHNS COUNTY, FLORIDA, LYING IN THE JAMES JAMES GRANT, SECTION 49, TOWNSHIP 4 SOUTH, RANGE 27 EAST, ST. JOHNS COUNTY, FLORIDA, MORE PARTICULARLY DESCRIBED AS FOLLOWS: FOR A POINT OF REFERENCE COMMENCE AT THE INTERSECTION OF THE WEST LINE OF SAID SECTION 49 WITH THE NORTHEASTERLY RIGHT-OF-WAY LINE OF RACETRACK ROAD (A 66 FOOT RIGHT-OF-WAY AS NOW ESTABLISHED); THENCE NORTH 00°59'04" WEST LEAVING SAID NORTHEASTERLY RIGHT-OF-WAY LINE AND ALONG SAID WEST LINE, A DISTANCE OF 448.06 FEET TO THE POINT OF BEGINNING; THENCE NORTH 00°55'04" WEST CONTINUING ALONG SAID WEST LINE, A DISTANCE OF 226.47 FEET TO A POINT LYING ON A U.S. ARMY CORPS OF ENGINEERS JURISDICTIONAL LINE; THENCE ALONG SAID JURISDICTIONAL LINE RUN THE FOLLOWING 36 COURSES: (1) THENCE SOUTH 56°02'25" EAST LEAVING SAID WEST LINE, A DISTANCE OF 24.13 FEET; (2) THENCE SOUTH 59°20'49" EAST, A DISTANCE OF 33.89 FEET; (3) THENCE SOUTH 80°20'42" EAST, A DISTANCE OF 29.84 FEET; (4) THENCE SOUTH 34°38'25" EAST, A DISTANCE OF 33.94 FEET; (5) THENCE NORTH 73°39'03" EAST, A DISTANCE OF 26.92 FEET; (6) THENCE SOUTH 65°58'48" EAST, A DISTANCE OF 47.69 FEET; (7) THENCE SOUTH 88°10'27" EAST, A DISTANCE OF 39.87 FEET; (8) THENCE SOUTH 61°48'18" EAST, A DISTANCE OF 43.63 FEET; (9) THENCE NORTH 83°58'54" EAST, A DISTANCE OF 47.94 FEET; (10) THENCE SOUTH 81°45'39" EAST, A DISTANCE OF 37.05 FEET; (11) THENCE NORTH 87°22'36" EAST, A DISTANCE OF 30.94 FEET; (12) THENCE SOUTH 74°20'23" EAST, A DISTANCE OF 36.08 FEET; (13) THENCE SOUTH 80°04'18" EAST, A DISTANCE OF 32.68 FEET; (14) THENCE SOUTH 55°16'53" EAST, A DISTANCE OF 37.22 FEET; (15) THENCE SOUTH 88°47'02" EAST, A DISTANCE OF 30.89 FEET; (16) THENCE NORTH 67°57'32" EAST, A DISTANCE OF 30.95 FEET; (17) THENCE SOUTH 70°49'32" EAST, A DISTANCE OF 32.31 FEET; (18) THENCE NORTH 05°19'35" EAST, A DISTANCE OF 24.09 FEET; (19) THENCE NORTH 14°39'13" EAST, A DISTANCE OF 30.82 FEET; (20) THENCE SOUTH 29°02'03" EAST, A DISTANCE OF 18.11 FEET; (21) THENCE SOUTH 68°33'28" EAST, A DISTANCE OF 27.28 FEET; (22) THENCE NORTH 75°21'11" EAST, A DISTANCE OF 30.78 FEET; (23) THENCE SOUTH 63°24'34" EAST, A DISTANCE OF 31.90 FEET; (24) THENCE NORTH 88°45'30" EAST, A DISTANCE OF 47.81 FEET; (25) THENCE SOUTH 29°30'40" EAST, A DISTANCE OF 29.07 FEET; (26) THENCE SOUTH 30°40'48" EAST, A DISTANCE OF 24.61 FEET; (27) THENCE NORTH 40°31'35" EAST, A DISTANCE OF 39.99 FEET; (28) THENCE NORTH 25°03'11" EAST, A DISTANCE OF 25.26 FEET; (29) THENCE SOUTH 57°39'51" EAST, A DISTANCE OF 31.14 FEET; (30) THENCE NORTH 78°40'33" EAST, A DISTANCE OF 29.51 FEET; (31) THENCE NORTH 26°51'41" EAST, A DISTANCE OF 25.72 FEET; (32) THENCE SOUTH 88°27'43" EAST, A DISTANCE OF 26.56 FEET; (33) THENCE SOUTH 27°53'32" EAST, A DISTANCE OF 20.97 FEET; (34) THENCE SOUTH 21°17'49" WEST, A DISTANCE OF 39.09 FEET; (35) THENCE SOUTH 30°33'31" EAST, A DISTANCE OF 22.18 FEET; (36) THENCE NORTH 76°55'43" EAST, A DISTANCE OF 24.88 FEET; THENCE SOUTH 28°38'26" EAST LEAVING SAID JURISDICTIONAL LINE AND ALONG A LINE TO ITS INTERSECTION WITH A U.S. ARMY CORPS OF ENGINEERS JURISDICTIONAL LINE, A DISTANCE OF 161.46 FEET; THENCE ALONG SAID JURISDICTIONAL LINE RUN THE FOLLOWING 11 COURSES: (1) THENCE SOUTH 14°52'07" WEST, A DISTANCE OF 21.56 FEET; (2) THENCE SOUTH 42°38'57" EAST, A DISTANCE OF 23.96 FEET; (3) THENCE SOUTH 17°10'26" EAST, A DISTANCE OF 40.18 FEET; (4) THENCE SOUTH 66°57'48" EAST, A DISTANCE OF 28.75 FEET; (5) THENCE SOUTH 20°39'46" EAST, A DISTANCE OF 27.23 FEET; (6) THENCE SOUTH 38°30'05" EAST, A DISTANCE OF 44.12 FEET; (7) THENCE SOUTH 38°07'03" WEST, A DISTANCE OF 20.38 FEET; (8) THENCE SOUTH 11°09'23" WEST, A DISTANCE OF 14.12 FEET; (9) THENCE NORTH 80°46'33" EAST, A DISTANCE OF 11.48 FEET; (10) THENCE SOUTH 56°01'56" EAST, A DISTANCE OF 17.13 FEET; (11) THENCE SOUTH 63°51'22" EAST, A DISTANCE OF 16.43 FEET; THENCE SOUTH 00°55'04" EAST LEAVING SAID JURISDICTIONAL LINE AND ALONG A LINE TO ITS INTERSECTION WITH THE NORTHEASTERLY LINE OF TRACT "B" OF SAID JULINGTON CREEK UNIT TWO, A DISTANCE OF 574.51 FEET; THENCE NORTH 76°22'54" WEST ALONG SAID NORTHEASTERLY LINE OF TRACT "B", A DISTANCE OF 549.26 FEET TO THE SOUTHEAST CORNER OF TRACT "H" OF SAID JULINGTON CREEK UNIT TWO; THENCE NORTH 00°55'04" WEST LEAVING SAID NORTHEASTERLY LINE OF SAID TRACT "B" AND ALONG THE EASTERLY LINE OF SAID TRACT "H", A DISTANCE OF 74.47 FEET TO THE NORTHEAST CORNER THEREOF; THENCE SOUTH 87°04'54" WEST ALONG A NORTH LINE OF SAID TRACT "H", A DISTANCE OF 550.00 FEET, TO THE POINT OF BEGINNING.

O.R. 1964 PG 1460

PARCEL 2:

A part of the James James Donation, Section 49, Township 4 South, Range 27 East, St. Johns County, Florida, being a part of Julington Creek Unit Two, as recorded in Map Book 16, pages 52 through 63, inclusive, of the public records of St. Johns County, Florida, being more particularly described as follows:

For a Point of Reference, commence at a point on the Northerly right-of-way line of Racetrack Road (a 66 foot right-of-way as now established), said point being the Southeasterly corner of said Julington Creek Unit Two and the Southwesterly corner of Julington Creek Unit Three, as recorded in Map Book 16, pages 64 through 88, inclusive, of the public records of St. Johns County, Florida; thence North $13^{\circ}37'06''$ East, leaving said Northerly right-of-way line of Racetrack Road, a distance of 67.00 feet; thence North $76^{\circ}22'54''$ West, a distance of 200.00 feet to the Point of Beginning; thence North $50^{\circ}29'10''$ East, a distance of 125.00 feet; thence North $13^{\circ}37'06''$ East, a distance of 134.65 feet; thence North $78^{\circ}22'53''$ West, a distance of 313.21 feet; thence South $08^{\circ}37'07''$ West, a distance of 224.58 feet; thence South $76^{\circ}22'54''$ East, a distance of 218.45 feet to the Point of Beginning.



St. Johns County Courthouse

DENNIS W. HOLLINGSWORTH

Tax Collector
HISTORICAL ST. JOHNS COUNTY
ST. AUGUSTINE, FLORIDA

(904) 823-2250
Sun-Com 865-2280
Fax (904) 823-2283
Post Office Box 9001
32085-9001

June 2, 1994

Mr. Dan Bosanko, Esquire
P.O. Box 1533
St. Augustine, FL 32085-1533

Re: Vacation of Plat -
Julington Creek Unit Two

Dear Mr. Bosanko:

In compliance with Florida Statute 197.192 and Florida Department of Revenue Rules and Regulations 12D-13.012, this is certification that the taxes in connection to the above referenced properties are paid in full.

The Real Estate Numbers for the above referenced properties are:

- out of 249000-2000
- out of 249000-2001
- out of 249000-3000
- all of 249000-3001

Attached for your reference are copies of the validated tax receipts for 1993. From the information made available to the collector's office, this complies with the law that all outstanding taxes have been paid in full.

Respectfully Yours,

Dennis W. Hollingsworth, C.F.C.
St. Johns County Tax Collector

DWH/dmw
Enclosure
cc: Kathryn M. Carrigg, Holland & Knight

D.R. 1064 PG 1462

EXHIBIT "A"

PARCEL 1:

O.R. 1064 PG 1463

PART OF BLOCKS 31, 32, 33 AND 37 TOGETHER WITH PART OF TRACT "G-7", JULINGTON CREEK UNIT TWO AS RECORDED IN MAP BOOK 16, PAGES 32 THROUGH 63 OF THE PUBLIC RECORDS OF ST. JOHNS COUNTY, FLORIDA, LYING IN THE JAMES JAMES GRANT, SECTION 49, TOWNSHIP 4 SOUTH, RANGE 27 EAST, ST. JOHNS COUNTY, FLORIDA, MORE PARTICULARLY DESCRIBED AS FOLLOWS: FOR A POINT OF REFERENCE COMMENCE AT THE INTERSECTION OF THE WEST LINE OF SAID SECTION 49 WITH THE NORTHEASTERLY RIGHT-OF-WAY LINE OF RACETRACK ROAD (A 66 FOOT RIGHT-OF-WAY AS NOW ESTABLISHED); THENCE NORTH 00°55'04" WEST LEAVING SAID NORTHEASTERLY RIGHT-OF-WAY LINE AND ALONG SAID WEST LINE, A DISTANCE OF 668.06 FEET TO THE POINT OF BEGINNING; THENCE NORTH 00°55'04" WEST CONTINUING ALONG SAID WEST LINE, A DISTANCE OF 226.67 FEET TO A POINT LYING ON A U.S. ARMY CORPS OF ENGINEERS JURISDICTIONAL LINE; THENCE ALONG SAID JURISDICTIONAL LINE RUN THE FOLLOWING 36 COURSES: (1) THENCE SOUTH 56°02'25" EAST LEAVING SAID WEST LINE, A DISTANCE OF 24.13 FEET; (2) THENCE SOUTH 39°20'49" EAST, A DISTANCE OF 31.89 FEET; (3) THENCE SOUTH 80°20'42" EAST, A DISTANCE OF 29.84 FEET; (4) THENCE SOUTH 36°38'25" EAST, A DISTANCE OF 33.94 FEET; (5) THENCE NORTH 73°39'03" EAST, A DISTANCE OF 26.92 FEET; (6) THENCE SOUTH 65°58'48" EAST, A DISTANCE OF 47.69 FEET; (7) THENCE SOUTH 88°10'27" EAST, A DISTANCE OF 39.87 FEET; (8) THENCE SOUTH 61°48'18" EAST, A DISTANCE OF 43.63 FEET; (9) THENCE NORTH 83°58'54" EAST, A DISTANCE OF 47.94 FEET; (10) THENCE SOUTH 81°43'39" EAST, A DISTANCE OF 37.05 FEET; (11) THENCE NORTH 87°22'36" EAST, A DISTANCE OF 30.94 FEET; (12) THENCE SOUTH 74°20'23" EAST, A DISTANCE OF 36.08 FEET; (13) THENCE SOUTH 80°04'18" EAST, A DISTANCE OF 32.68 FEET; (14) THENCE SOUTH 55°16'53" EAST, A DISTANCE OF 37.22 FEET; (15) THENCE SOUTH 88°47'02" EAST, A DISTANCE OF 30.89 FEET; (16) THENCE NORTH 67°57'32" EAST, A DISTANCE OF 30.95 FEET; (17) THENCE SOUTH 70°49'52" EAST, A DISTANCE OF 32.31 FEET; (18) THENCE NORTH 05°19'35" EAST, A DISTANCE OF 24.09 FEET; (19) THENCE NORTH 74°39'33" EAST, A DISTANCE OF 30.82 FEET; (20) THENCE SOUTH 29°02'03" EAST, A DISTANCE OF 18.11 FEET; (21) THENCE SOUTH 68°33'25" EAST, A DISTANCE OF 27.28 FEET; (22) THENCE NORTH 73°21'11" EAST, A DISTANCE OF 30.78 FEET; (23) THENCE SOUTH 63°24'34" EAST, A DISTANCE OF 31.90 FEET; (24) THENCE NORTH 86°45'30" EAST, A DISTANCE OF 47.81 FEET; (25) THENCE SOUTH 29°30'40" EAST, A DISTANCE OF 25.07 FEET; (26) THENCE SOUTH 30°40'48" EAST, A DISTANCE OF 24.61 FEET; (27) THENCE NORTH 40°31'55" EAST, A DISTANCE OF 39.98 FEET; (28) THENCE NORTH 25°03'11" EAST, A DISTANCE OF 25.26 FEET; (29) THENCE SOUTH 37°39'51" EAST, A DISTANCE OF 31.16 FEET; (30) THENCE NORTH 78°40'53" EAST, A DISTANCE OF 29.51 FEET; (31) THENCE NORTH 26°51'41" EAST, A DISTANCE OF 25.22 FEET; (32) THENCE SOUTH 88°27'43" EAST, A DISTANCE OF 26.56 FEET; (33) THENCE SOUTH 27°53'32" EAST, A DISTANCE OF 20.97 FEET; (34) THENCE SOUTH 21°17'49" WEST, A DISTANCE OF 35.09 FEET; (35) THENCE SOUTH 30°33'31" EAST, A DISTANCE OF 22.18 FEET; (36) THENCE NORTH 76°55'43" EAST, A DISTANCE OF 24.88 FEET; THENCE SOUTH 28°38'26" EAST LEAVING SAID JURISDICTIONAL LINE AND ALONG A LINE TO ITS INTERSECTION WITH A U.S. ARMY CORPS OF ENGINEERS JURISDICTIONAL LINE, A DISTANCE OF 161.46 FEET; THENCE ALONG SAID JURISDICTIONAL LINE RUN THE FOLLOWING 11 COURSES: (1) THENCE SOUTH 14°52'07" WEST, A DISTANCE OF 25.56 FEET; (2) THENCE SOUTH 42°39'57" EAST, A DISTANCE OF 23.96 FEET; (3) THENCE SOUTH 12°10'26" EAST, A DISTANCE OF 40.18 FEET; (4) THENCE SOUTH 66°57'48" EAST, A DISTANCE OF 28.75 FEET; (5) THENCE SOUTH 20°39'46" EAST, A DISTANCE OF 27.23 FEET; (6) THENCE SOUTH 36°30'05" EAST, A DISTANCE OF 44.12 FEET; (7) THENCE SOUTH 38°07'03" WEST, A DISTANCE OF 20.38 FEET; (8) THENCE SOUTH 11°09'23" WEST, A DISTANCE OF 16.12 FEET; (9) THENCE NORTH 80°46'33" EAST, A DISTANCE OF 11.48 FEET; (10) THENCE SOUTH 56°01'56" EAST, A DISTANCE OF 17.13 FEET; (11) THENCE SOUTH 63°51'22" EAST, A DISTANCE OF 16.43 FEET; THENCE SOUTH 00°55'04" EAST LEAVING SAID JURISDICTIONAL LINE AND ALONG A LINE TO ITS INTERSECTION WITH THE NORTHEASTERLY LINE OF TRACT "B" OF SAID JULINGTON CREEK UNIT TWO, A DISTANCE OF 576.51 FEET; THENCE NORTH 76°22'54" WEST ALONG SAID NORTHEASTERLY LINE OF TRACT "B", A DISTANCE OF 549.26 FEET TO THE SOUTHEAST CORNER OF TRACT "H" OF SAID JULINGTON CREEK UNIT TWO; THENCE NORTH 00°55'04" WEST LEAVING SAID NORTHEASTERLY LINE OF SAID TRACT "B" AND ALONG THE EASTERLY LINE OF SAID TRACT "H", A DISTANCE OF 741.47 FEET TO THE NORTHEAST CORNER THEREOF; THENCE SOUTH 89°04'16" WEST ALONG SAID

EXHIBIT "A" - Page Two

PARCEL 21

A part of the James James Donation, Section 49, Township 4 South, Range 27 East, St. Johns County, Florida, being a part of Julington Creek Unit Two, as recorded in Map Book 16, pages 52 through 63, inclusive, of the public records of St. Johns County, Florida, being more particularly described as follows:

For a Point of Reference, commence at a point on the Northerly right-of-way line of Racetrack Road (a 66 foot right-of-way as now established), said point being the Southeasterly corner of said Julington Creek Unit Two and the Southwesterly corner of Julington Creek Unit Three, as recorded in Map Book 16, pages 64 through 88, inclusive, of the public records of St. Johns County, Florida; thence North $13^{\circ}37'06''$ East, leaving said Northerly right-of-way line of Racetrack Road, a distance of 67.00 feet; thence North $76^{\circ}22'54''$ West, a distance of 200.00 feet to the Point of Beginning; thence North $50^{\circ}29'18''$ East, a distance of 125.00 feet; thence North $13^{\circ}37'06''$ East, a distance of 134.65 feet; thence North $78^{\circ}22'53''$ West, a distance of 313.21 feet; thence South $08^{\circ}37'07''$ West, a distance of 224.58 feet; thence South $76^{\circ}22'54''$ East, a distance of 218.45 feet to the Point of Beginning.

ENNIS W. HOLLINGSWORTH 1993 REAL ESTATE 11061563
 JOHNS COUNTY TAX COLLECTOR NOTICE OF AD VALOREM TAXES AND NON-AD VALOREM ASSESSMENTS

PARCEL NUMBER	ESCROW CD	ASSESSED VALUE	EXEMPTIONS	TAXABLE VALUE	MILLAGE CODE
249000-2000		495,180	0	495,180	05JC

GENERAL DEVELOPMENT CORP
 2 ATLANTIC GULF COMMUNITIES
 2601 SOUTH BAYSHORE DRIVE
 MIAMI FL 33133-5461

LAND VALUE : 495,180
 IMP. VALUE : 0
 49 04 27 108.70 ACRES
 16/52-63 JULINGTON CREEK UT 2
 (EX TRACT H) & (EX PT IN
 (CONTINUED ON THE TAX ROLL)

EASE PAY IN U.S. FUNDS TO DENNIS W. HOLLINGSWORTH TAX COLLECTOR - P.O. DRAWER A, ST. AUGUSTINE, FL 32085-0638

PAID BY -	NOV 30	DEC 31	JAN 31	FEB 28	MAR 31
RES DUE =	8,434.05	8,521.91	8,609.76	8,697.62	8,785.47

11061563 PER1 [TCK TCA TMO T15] 00000878547
 RECEIPTED* 12-16-93 8521.91 19*042628
 REPRINT

ENNIS W. HOLLINGSWORTH 1993 REAL ESTATE 11061564
 JOHNS COUNTY TAX COLLECTOR NOTICE OF AD VALOREM TAXES AND NON-AD VALOREM ASSESSMENTS

PARCEL NUMBER	ESCROW CD	ASSESSED VALUE	EXEMPTIONS	TAXABLE VALUE	MILLAGE CODE
249000-2001		344,050	0	344,050	05JC

CNB TRUSTEE
 100 N ASHLEY 6TH FLOOR
 TAMPA FL 33602

LAND VALUE : 344,050
 IMP. VALUE : 0
 49 04 27 77.50 ACRES
 16/52-63 JULINGTON CREEK UT 2
 BLK 25 LOTS 1-6 & 1112 BLK 26
 (CONTINUED ON THE TAX ROLL)

EASE PAY IN U.S. FUNDS TO DENNIS W. HOLLINGSWORTH TAX COLLECTOR - P.O. DRAWER A, ST. AUGUSTINE, FL 32085-0638

PAID BY -	NOV 30	DEC 31	JAN 31	FEB 28	MAR 31
RES DUE =	5,859.97	5,921.02	5,982.06	6,043.10	6,104.14

** ALSO PRIOR YEAR TAXES DUE **

1061564 PER1 [TCK TCA TMO T15] 00000610414
 RECEIPTED* 12-16-93 5921.02 19*042529
 REPRINT

ENNIS W. HOLLINGSWORTH 1993 REAL ESTATE 11061567
 JOHNS COUNTY TAX COLLECTOR NOTICE OF AD VALOREM TAXES AND NON-AD VALOREM ASSESSMENTS

PARCEL NUMBER	ESCROW CD	ASSESSED VALUE	EXEMPTIONS	TAXABLE VALUE	MILLAGE CODE
249000-3000		1,116,930	0	1,116,930	05JC

GENERAL DEVELOPMENT CORP
 ATLANTIC GULF COMMUNITIES
 601 SOUTH BAYSHORE DRIVE
 MIAMI FL 33133-5461

LAND VALUE : 1,116,930
 IMP. VALUE : 0
 49 04 27 244.00 ACRES
 16/64-88 JULINGTON CREEK UT 3
 (EX PTS TRS Q & U
 (CONTINUED ON THE TAX ROLL)

EASE PAY IN U.S. FUNDS TO DENNIS W. HOLLINGSWORTH TAX COLLECTOR - P.O. DRAWER A, ST. AUGUSTINE, FL 32085-0638

PAID BY -	NOV 30	DEC 31	JAN 31	FEB 28	MAR 31
RES DUE =	19,023.93	19,222.09	19,420.26	19,618.42	19,816.59

** ALSO PRIOR YEAR TAXES DUE **

1061567 PER1 [TCK TCA TMO T15] 00001981659
 RECEIPTED* 12-16-93 19222.09 19*042630
 REPRINT

ENNIS W. HOLLINGSWORTH 1993 REAL ESTATE 11061568
 JOHNS COUNTY TAX COLLECTOR NOTICE OF AD VALOREM TAXES AND NON-AD VALOREM ASSESSMENTS

PARCEL NUMBER	ESCROW CD	ASSESSED VALUE	EXEMPTIONS	TAXABLE VALUE	MILLAGE CODE
249000-3001		511,620	0	511,620	05JC

CNB TRUSTEE
 100 N ASHLEY 6TH FLOOR
 TAMPA FL 33602

LAND VALUE : 511,620
 IMP. VALUE : 0
 49 04 27 96.34 ACRES
 16/64-88 JULINGTON CREEK UNIT 3
 BLK 73 LOTS 1-4 5 7-10 12 13 16
 (CONTINUED ON THE TAX ROLL)

EASE PAY IN U.S. FUNDS TO DENNIS W. HOLLINGSWORTH TAX COLLECTOR - P.O. DRAWER A, ST. AUGUSTINE, FL 32085-0638

PAID BY -	NOV 30	DEC 31	JAN 31	FEB 28	MAR 31
RES DUE =	8,714.06	8,804.84	8,895.61	8,986.38	9,077.15

** ALSO PRIOR YEAR TAXES DUE **

1061568 PER1 [TCK TCA TMO T15] 00000907715
 RECEIPTED* 12-16-93 8804.84 19*042630

O.R. 1064 PG 1465

The St. Augustine Record

PUBLISHED EVERY AFTERNOON MONDAY THROUGH FRIDAY, SATURDAY AND SUNDAY MORNING
ST. AUGUSTINE AND ST. JOHNS COUNTY, FLORIDA

STATE OF FLORIDA,
COUNTY OF ST. JOHNS

Before the undersigned authority personally appeared _____
 SHERRY R. FREE _____ who on oath says that she is
 ACCOUNTING CLERK _____ of the St. Augustine Record, a
 daily newspaper published at St. Augustine in St. Johns County, Florida; that
 the attached copy of advertisement, being a _____
 NOTICE _____
 _____ in the matter of _____
 ATLANTIC GULF COMMUNITIES CORP. _____
 _____ in the _____ Court,
 was published in said newspaper in the issues of _____
 JUNE 14 and 21, 1994

Affiant further says that the St. Augustine Record is a newspaper published
 at St. Augustine, in said St. Johns County, Florida, and that the said
 newspaper has heretofore been continuously published in said St. Johns Coun-
 ty, Florida, each day and has been entered as second class mail matter at the
 post office in the City of St. Augustine, in said St. Johns County, Florida, for a
 period of one year next preceding the first publication of the attached copy of
 advertisement; and affiant further says that she has neither paid nor promised
 any person, firm or corporation any discount, rebate, commission or refund
 for the purpose of securing the advertisement for publication in the said
 newspaper.

Sworn to and subscribed before me _____
 this _____ 21st _____ day of _____ June _____
 A.D. 19 _____ 94

Susan Hunt Mills
 SUSAN HUNT MILLS, Public
 MY COMMISSION # DC 177590 EXPIRES
 February 3, 1998
 BONDED THROUGH TROY FARM INSURANCE, INC.



NOTICE
 NOTICE IS HEREBY GIVEN
 THAT The County of St. Johns,
 State of Florida, the owner of
 Parcel 1 described below, and
 Atlantic Gulf Communities Cor-
 poration with offices located at
 1711 Durbin Creek Boulevard,
 Jacksonville, Florida 32259, the
 owner of Parcel 2 described be-
 low, intend together to petition
 the Board of County Commis-
 sioners for St. Johns County,
 Florida, to vacate those portions
 of the Plot known as Julington
 Creek Unit Two, as recorded in
 Map Book 16, pages 52 through
 A3, of the public records of St.
 Johns County, Florida, lying
 within Parcels 1 and 2, which
 are more particularly described
 as follows:

EXHIBIT "A"
 PARCEL 1:
 PART OF BLOCKS 31, 32, 33
 AND 37 TOGETHER WITH
 PART OF TRACT "G-7", JU-
 LINGTON CREEK UNIT TWO
 AS RECORDED IN MAP BOOK
 16, PAGES 52 THROUGH 63 OF
 THE PUBLIC RECORDS OF
 ST. JOHNS COUNTY, FLORI-
 DA, LYING IN THE JAMES
 JAMES GRANT, SECTION 49,
 TOWNSHIP 4 SOUTH, RANGE
 27 EAST, ST. JOHNS COUNTY,
 FLORIDA, MORE PARTICU-
 LARLY DESCRIBED AS FOL-
 LOWS: FOR A POINT OF REF-
 ERENCE COMMENCE AT THE
 INTERSECTION OF THE
 WEST LINE OF SAID SECTION
 49 WITH THE NORTHEASTER-
 LY RIGHT-OF-WAY LINE OF
 RACETRACK ROAD (A 66
 FOOT RIGHT-OF-WAY AS
 NOW ESTABLISHED);
 THENCE NORTH 00°55'04"
 WEST LEAVING SAID NORTH-
 EASTERLY RIGHT-OF-WAY
 LINE AND ALONG SAID WEST
 LINE, A DISTANCE OF 668.06
 FEET TO THE POINT OF BE-
 GINNING; THENCE NORTH
 00°55'04" WEST CONTINUING
 ALONG SAID WEST LINE TO
 A DISTANCE OF 728.87 FEET TO
 A POINT LYING ON A U.S.
 ARMY CORPS OF ENGI-
 NEERS JURISDICTIONAL
 LINE; THENCE ALONG SAID
 JURISDICTIONAL LINE RUN
 THE FOLLOWING COURSES:
 (1) THENCE SOUTH 58°02'25"
 EAST LEAVING SAID WEST LINE, A DIS-
 TANCE OF 74.13 FEET; (2)
 THENCE SOUTH 57°20'49"
 EAST, A DISTANCE OF 31.89
 FEET; (3) THENCE SOUTH
 86°20'42" EAST, A DISTANCE
 OF 29.84 FEET; (4) THENCE
 SOUTH 38°38'25" EAST, A DIS-
 TANCE OF 33.94 FEET; (5)
 THENCE NORTH 73°39'03"
 EAST, A DISTANCE OF 26.92
 FEET; (6) THENCE SOUTH
 65°38'48" EAST, A DISTANCE
 OF 47.69 FEET; (7) THENCE
 SOUTH 88°10'27" EAST, A DIS-
 TANCE OF 39.87 FEET; (8)
 THENCE SOUTH 81°48'18"
 EAST, A DISTANCE OF 43.63
 FEET; (9) THENCE NORTH
 83°58'54" EAST, A DISTANCE
 OF 47.94 FEET; (10) THENCE
 SOUTH 81°45'29" EAST, A DIS-
 TANCE OF 37.05 FEET; (11)
 THENCE NORTH 87°27'34"
 EAST, A DISTANCE OF 30.94
 FEET; (12) THENCE SOUTH
 74°20'23" EAST, A DISTANCE
 OF 36.08 FEET; (13) THENCE
 SOUTH 80°04'18" EAST, A DIS-
 TANCE OF 37.68 FEET; (14)
 THENCE SOUTH 55°16'53"
 EAST, A DISTANCE OF 37.22
 FEET; (15) THENCE SOUTH
 88°47'02" EAST, A DISTANCE
 OF 30.89 FEET; (16) THENCE
 NORTH 67°57'22" EAST, A DIS-
 TANCE OF 30.95 FEET; (17)
 THENCE SOUTH 70°49'57"
 EAST, A DISTANCE OF 32.31
 FEET; (18) THENCE NORTH
 05°19'35" EAST, A DISTANCE
 OF 24.09 FEET; (19) THENCE
 NORTH 74°39'33" EAST, A DIS-
 TANCE OF 30.82 FEET; (20)
 THENCE SOUTH 29°02'03"
 EAST, A DISTANCE OF 18.11
 FEET; (21) THENCE SOUTH
 68°33'28" EAST, A DISTANCE
 OF 27.28 FEET; (22) THENCE
 NORTH 75°21'11" EAST, A DIS-
 TANCE OF 30.78 FEET; (23)
 THENCE SOUTH 63°74'37"
 EAST, A DISTANCE OF 31.90

O.R. 1064 PG 1466

FEET; (24) THENCE NORTH 05°45'30" EAST, A DISTANCE OF 47.81 FEET; (25) THENCE SOUTH 77°20'40" EAST, A DISTANCE OF 25.87 FEET; (26) THENCE SOUTH 30°40'48" EAST, A DISTANCE OF 24.61 FEET; (27) THENCE NORTH 40°31'55" EAST, A DISTANCE OF 25.99 FEET; (28) THENCE NORTH 25°00'11" EAST, A DISTANCE OF 25.24 FEET; (29) THENCE SOUTH 57°39'31" EAST, A DISTANCE OF 31.14 FEET; (30) THENCE NORTH 78°40'53" EAST, A DISTANCE OF 29.51 FEET; (31) THENCE NORTH 25°51'41" EAST, A DISTANCE OF 25.22 FEET; (32) THENCE SOUTH 08°27'42" EAST, A DISTANCE OF 26.54 FEET; (33) THENCE SOUTH 17°33'32" EAST, A DISTANCE OF 20.97 FEET; (34) THENCE SOUTH 21°17'49" WEST, A DISTANCE OF 35.09 FEET; (35) THENCE SOUTH 30°33'31" EAST, A DISTANCE OF 22.18 FEET; (36) THENCE NORTH 74°55'43" EAST, A DISTANCE OF 24.88 FEET; THENCE SOUTH 70°38'26" EAST LEAVING SAID JURISDICTIONAL LINE AND ALONG A LINE TO ITS INTERSECTION WITH A U.S. ARMY CORPS OF ENGINEERS JURISDICTIONAL LINE, A DISTANCE OF 161.44 FEET; THENCE ALONG SAID JURISDICTIONAL LINE RUN THE FOLLOWING 11 COURSES: (1) THENCE SOUTH 14°57'07" WEST, A DISTANCE OF 25.54 FEET; (2) THENCE SOUTH 07°29'57" EAST, A DISTANCE OF 23.95 FEET; (3) THENCE SOUTH 17°10'24" EAST, A DISTANCE OF 40.18 FEET; (4) THENCE SOUTH 44°57'40" EAST, A DISTANCE OF 28.25 FEET; (5) THENCE SOUTH 20°29'46" EAST, A DISTANCE OF 27.23 FEET; (6) THENCE SOUTH 34°20'05" EAST, A DISTANCE OF 44.12 FEET; (7) THENCE SOUTH 38°07'03" WEST, A DISTANCE OF 20.38 FEET; (8) THENCE SOUTH 11°09'22" WEST, A DISTANCE OF 14.72 FEET; (9) THENCE NORTH 00°44'33" EAST, A DISTANCE OF 11.48 FEET; (10) THENCE SOUTH 54°01'36" EAST, A DISTANCE OF 17.13 FEET; (11) THENCE SOUTH 63°51'22" EAST, A DISTANCE OF 16.47 FEET; THENCE SOUTH 00°55'04" EAST LEAVING SAID

JURISDICTIONAL LINE AND ALONG A LINE TO ITS INTERSECTION WITH THE NORTH-EASTERLY LINE OF TRACT "B" OF SAID JULINGTON CREEK UNIT TWO, A DISTANCE OF 378.51 FEET; THENCE NORTH 76°22'54" WEST ALONG SAID NORTH-EASTERLY LINE OF TRACT "B", A DISTANCE OF 349.26 FEET TO THE SOUTHEAST CORNER OF TRACT "H" OF SAID JULINGTON CREEK UNIT TWO; THENCE NORTH 00°55'04" WEST LEAVING SAID NORTHEASTERLY LINE OF SAID TRACT "B" AND ALONG THE EASTERLY LINE OF SAID TRACT "H", A DISTANCE OF 741.47 FEET TO THE NORTHEAST CORNER THEREOF; THENCE SOUTH 07°04'56" WEST ALONG A NORTH LINE OF SAID TRACT "H", A DISTANCE OF 350.08 FEET, TO THE POINT OF BEGINNING.

PARCEL 2:

A part of the James James Donation, Section 49, Township 4 South, Range 27 East, St. Johns County, Florida, being a part of Julington Creek Unit Two, as recorded in Map Book 16, pages 52 through 63, inclusive, of the public records of St. Johns County, Florida, being more particularly described as follows:

For a Point of Reference, commence at a point on the Northerly right-of-way line of Racetrack Road (a 66 foot right-of-way as now established), said point being the Southeastern corner of said Julington Creek Unit Two and the Southwestern corner of Julington Creek Unit Three, as recorded in Map Book 16, pages 64 through 88, inclusive, of the public records of St. Johns County, Florida; thence North 13°37'06" East, leaving said Northerly right-of-way line of Racetrack road, a distance of 67.00 feet; thence north 76°22'54" west, a distance of 200.00 feet to the Point of Beginning; thence North 50°29'18" East, a distance of 125.00 feet; thence North 13°27'06" East, a distance of 134.65 feet; thence North 78°27'06" West, a distance of 312.00 feet; thence South 08°37'02" West, a distance of 224.58 feet; thence South 74°22'54" East, a distance of 218.45 feet to the Point of Beginning.

LC6 June 14, 21, 1994

O. R. 1064 PG 1467

STATE OF FLORIDA

COUNTY OF ST. JOHNS

I, CARL "BUD" MARKEL, CLERK OF THE CIRCUIT COURT, Ex-officio, Clerk of the Board of County Commissioners of St. Johns County, Florida,

DO HEREBY CERTIFY that the foregoing is a true and correct copy of the following:

RESOLUTION NO. 94-116

adopted by the Board of County Commissioners of St. Johns County, Florida at a regular meeting of said Board held June 28, 1994

as the same appears of record in the office of the Clerk of the Circuit Court of St. Johns County, Florida, of the public records of St. Johns County, Florida.

IN WITNESS WHEREOF, I have hereunto set my hand and affixed my seal of office this 21st day of July, 1994.

CARL "BUD" MARKEL,
CLERK OF THE CIRCUIT COURT
Ex-officio Clerk of the Board of County
Commissioners of St. Johns County, Florida

By: Yvonne Carter
Yvonne Carter, Deputy Clerk

(seal)

O.R. 1064 PG 1468