

RESOLUTION NO. 94- 158
RESOLUTION OF THE BOARD OF COUNTY
COMMISSIONERS OF ST. JOHNS COUNTY, FLORIDA
APPROVING A SUBDIVISION PLAT FOR
MARSH LANDING AT SAWGRASS UNIT TWENTY - SEVEN

WHEREAS, Fletcher Realty III, Inc., a Florida Corporation, as Owner, has applied to the Board of County Commissioners of St. Johns County, Florida, for approval to record a subdivision plat known as Marsh Landing at Sawgrass Unit Twenty-Seven.

NOW, THEREFORE BE IT RESOLVED BY THE BOARD OF COUNTY COMMISSIONERS OF ST. JOHNS COUNTY, FLORIDA, as follows:

Section 1. The above-described subdivision plat and its dedicated areas depicted thereon are conditionally approved and accepted by the Board of County Commissioners of St. Johns County, Florida subject to Section 4 and 5.

Section 2. The Construction Bond is set in the amount of \$877,835.00 and shall delivered to the Clerk of Courts and approved by him prior to recording the plat.

Section 3. A Warranty Bond is not required.

Section 4. The approval and acceptance described in Section 1 shall not take effect until the Clerk has received a title opinion, certificate, or policy pertaining to the real property that is the subject of the aforementioned subdivision plat which opinion, certificate or policy has been approved by the County Attorney or Assistant County Attorney.

Section 5. The approval and acceptance described in Section 1 shall not take effect until the plat has been signed by each of the following departments, person or offices:

- a) Chairman or Vice-Chairman of the Board of County Commissioners of St. Johns County, Florida;
- b) Office of the County Attorney;
- c) County Planning and Zoning Department; and
- d) Clerk of Courts.

The Clerk shall not sign or accept the Plat for recording until it has been signed by each of the above persons or entities described in a) through c) above. If the plat is not signed and accepted by the Clerk for recording within 14 days from the date hereof, then the above-described conditional approval shall automatically terminate. If the plat is signed by the Clerk on or before such time, the conditions described herein shall be deemed to have been met.

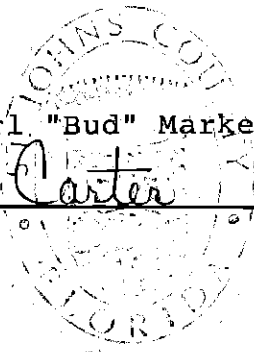
ADOPTED by the Board of County Commissioners of St. Johns County, Florida, this 23 day of August, 1994.

BOARD OF COUNTY COMMISSIONERS
OF ST. JOHNS COUNTY, FLORIDA

BY: Alan Roberts
Its

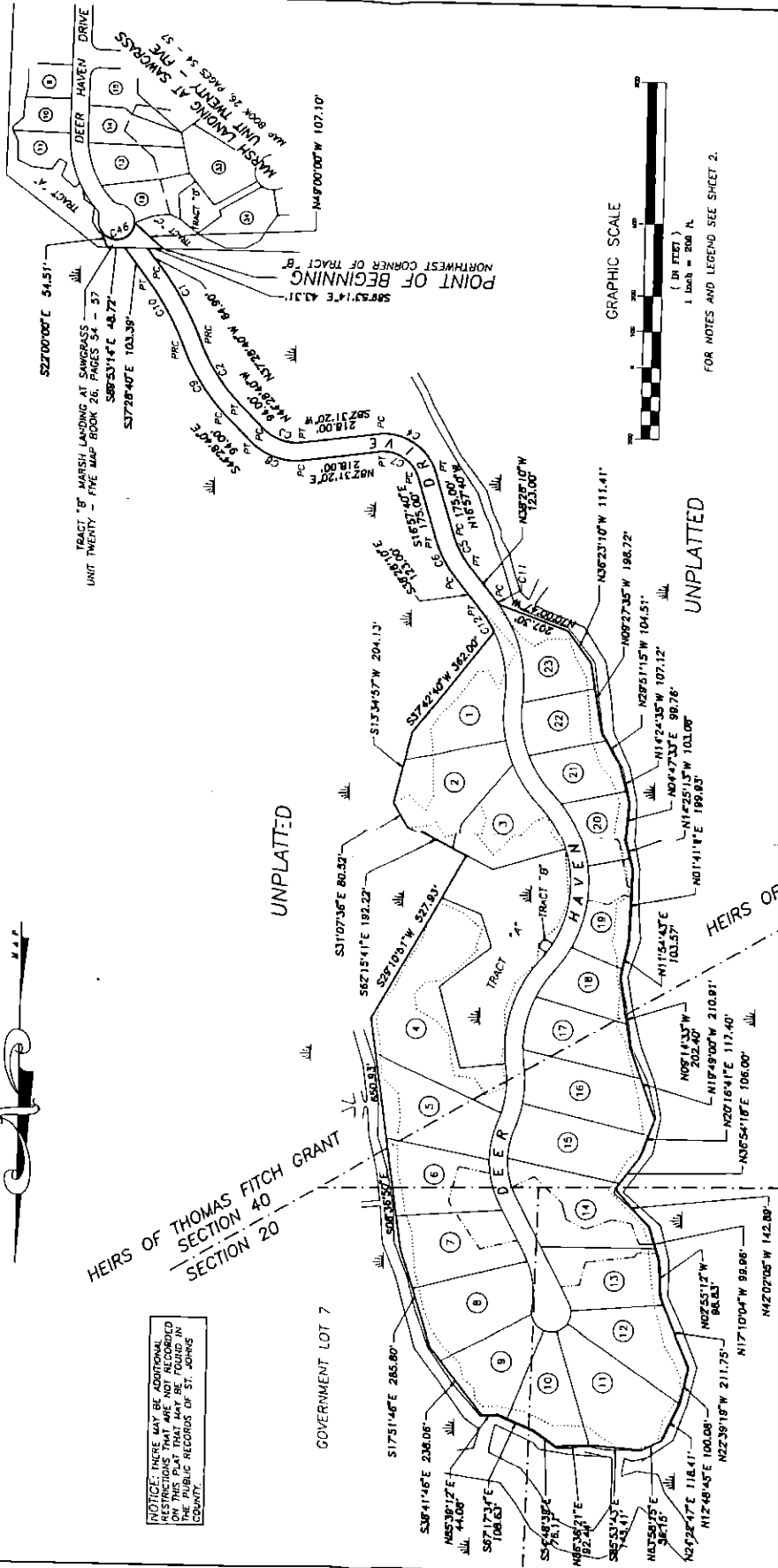
ATTEST: Carl "Bud" Markel, Clerk

Lynne Carter
Deputy Clerk

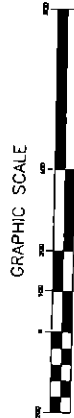


MARSHI LANDING AT SAWGRASS UNIT 'TWENTY - SEVEN

BEING A REPLAT OF TRACT "B" MARSH LANDING AT SAWGRASS UNIT TWENTY - FIVE AS RECORDED IN MAP BOOK 26, PAGES 54 THROUGH 57, OF THE ST. JOHNS COUNTY PUBLIC RECORDS; TOGETHER WITH A PART OF GOVERNMENT LOTS 6, 7 AND 8, SECTION 20; TOGETHER WITH A PART OF THE HEIRS OF THOMAS FITCH GRANT, SECTION 40, TOWNSHIP 3 SOUTH, RANGE 29 EAST, ST. JOHNS COUNTY, FLORIDA.



CURVE	RADIUS	LENGTH	TANGENT	CHORD	BEARING	DELTA
C1	625.00'	210.38'	118.95'	229.64'	N59°29'40"W	16°00'00"
C2	525.00'	210.25'	118.85'	229.54'	N57°38'40"W	2°00'00"
C3	125.00'	115.63'	63.31'	109.34'	N20°58'40"W	5°00'00"
C4	150.00'	210.78'	122.02'	181.93'	N27°12'55"W	8°00'00"
C5	275.00'	103.23'	52.23'	102.63'	N27°12'55"W	8°00'00"
C6	325.00'	122.00'	61.23'	121.28'	S27°42'53"E	7°30'00"
C7	190.00'	140.53'	84.65'	129.25'	S57°13'10"E	6°30'00"
C8	150.00'	181.89'	97.25'	156.17'	S70°48'40"E	5°00'00"
C9	175.00'	230.87'	116.89'	229.27'	S32°38'40"E	2°00'00"
C10	325.00'	103.23'	52.23'	102.63'	S27°12'55"W	8°00'00"
C11	325.00'	103.23'	52.23'	102.63'	N27°12'55"W	8°00'00"
C12	325.00'	103.23'	52.23'	102.63'	N27°12'55"W	8°00'00"
C13	325.00'	103.23'	52.23'	102.63'	N27°12'55"W	8°00'00"
C14	325.00'	103.23'	52.23'	102.63'	N27°12'55"W	8°00'00"
C15	325.00'	103.23'	52.23'	102.63'	N27°12'55"W	8°00'00"
C16	325.00'	103.23'	52.23'	102.63'	N27°12'55"W	8°00'00"
C17	325.00'	103.23'	52.23'	102.63'	N27°12'55"W	8°00'00"
C18	325.00'	103.23'	52.23'	102.63'	N27°12'55"W	8°00'00"
C19	325.00'	103.23'	52.23'	102.63'	N27°12'55"W	8°00'00"
C20	325.00'	103.23'	52.23'	102.63'	N27°12'55"W	8°00'00"
C21	325.00'	103.23'	52.23'	102.63'	N27°12'55"W	8°00'00"
C22	325.00'	103.23'	52.23'	102.63'	N27°12'55"W	8°00'00"
C23	325.00'	103.23'	52.23'	102.63'	N27°12'55"W	8°00'00"



FOR NOTES AND LEGEND SEE SHEET 2.

NOTICE: THERE MAY BE ADDITIONAL RESTRICTIONS THAT ARE NOT RECORDED IN THE PUBLIC RECORDS OF ST. JOHNS COUNTY.

DURDEN LAND SURVEYORS INC.
 PRELIMINARY
 JAN 10 1954
 P & S W - S & S INC., INC.
 POST OFFICE BOX 50670
 1100 SOUTH HEND STREET
 TAMPA, FLORIDA 33224
 (800) 241-1381