

RESOLUTION NO. 94-201  
RESOLUTION OF THE BOARD OF COUNTY  
COMMISSIONERS OF ST. JOHNS COUNTY, FLORIDA  
APPROVING A SUBDIVISION PLAT FOR  
THE GROVE NORTH

WHEREAS, The Grove North at Ponte Vedra, LTD., a Florida Limited Partnership, as Owner, has applied to the Board of County Commissioners of St. Johns County, Florida, for approval to record a subdivision plat known as The Grove North.

NOW, THEREFORE BE IT RESOLVED BY THE BOARD OF COUNTY COMMISSIONERS OF ST. JOHNS COUNTY, FLORIDA, as follows:

Section 1. The above-described subdivision plat and its dedicated areas depicted thereon are conditionally approved and accepted by the Board of County Commissioners of St. Johns County, Florida subject to Section 2, 4, and 5.

Section 2. The Construction Bond is set in the amount of \$129,181.17 and shall delivered to the Clerk of Courts and approved by him prior to recording the plat.

Section 3. A Warranty Bond is not required.

Section 4. The approval and acceptance described in Section 1 shall not take effect until the Clerk has received a title opinion, certificate, or policy pertaining to the real property that is the subject of the aforementioned subdivision plat which opinion, certificate or policy is in a form acceptable to the County Attorney or Assistant County Attorney.

Section 5. The approval and acceptance described in Section 1 shall not take effect until the plat has been signed by each of the following departments, person or offices:

- a) Chairman or Vice-Chairman of the Board of County Commissioners of St. Johns County, Florida;
- b) Office of the County Attorney;
- c) County Planning and Zoning Department; and
- d) Clerk of Courts.

The Clerk shall not sign or accept the Plat for recording until it has been signed by each of the above persons or entities described in a) through c) above. If the plat is not signed and accepted by the Clerk for recording within 14 days from the date hereof, then the above-described conditional approval shall automatically terminate. If the plat is signed by the Clerk on or before such time, the conditions described herein shall be deemed to have been met.

ADOPTED by the Board of County Commissioners of St. Johns County, Florida, this 8th day of November, 1994.

BOARD OF COUNTY COMMISSIONERS  
OF ST. JOHNS COUNTY, FLORIDA

BY: Allan Roberts  
Its Chair - Allan Roberts

ATTEST: Carl "Bud" Markel, Clerk

By: Yvonne Carter  
Deputy Clerk

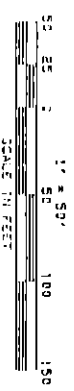
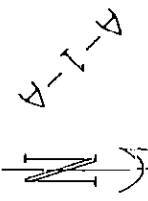
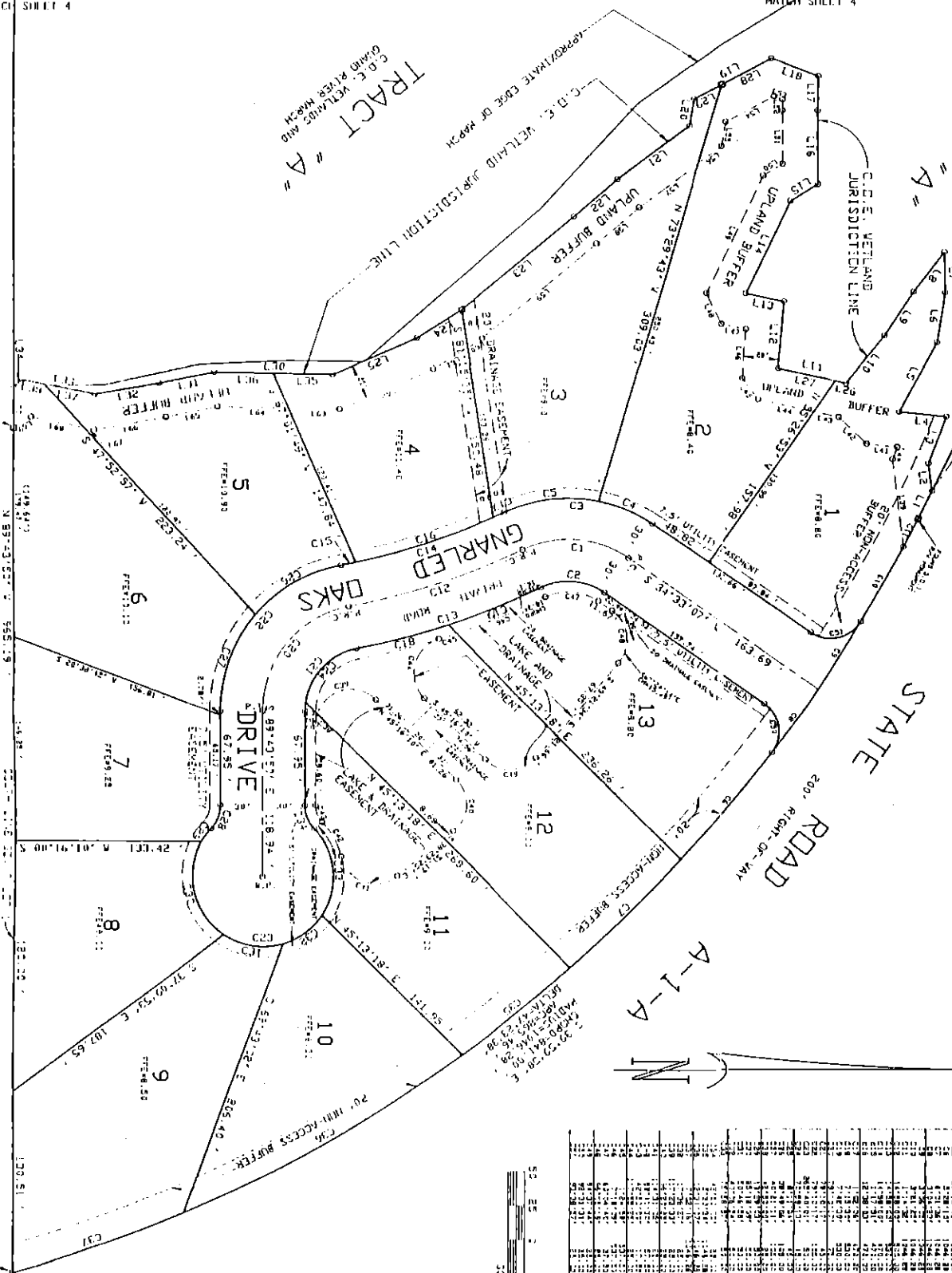
TRACT # 4

THE GROVE NORTH  
 A PART OF GOVERNMENT LOT 1, SECTION 14, TOWNSHIP  
 4 SOUTH, RANGE 29 EAST, ST. JOHNS COUNTY, FLORIDA

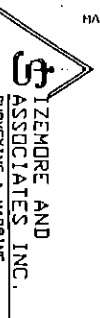
352 3 3 1994  
 PRELIMINARY MAP BOOK PAGE  
 SHEET 3 OF 4 SHEETS

MATCH LINE  
 MATCH SHEET 4

MATCH LINE  
 MATCH SHEET 4



LOT	AREA	PERCENT	TOTAL
1	1.15	1.15	100.00
2	1.15	1.15	100.00
3	1.15	1.15	100.00
4	1.15	1.15	100.00
5	1.15	1.15	100.00
6	1.15	1.15	100.00
7	1.15	1.15	100.00
8	1.15	1.15	100.00
9	1.15	1.15	100.00
10	1.15	1.15	100.00
11	1.15	1.15	100.00
12	1.15	1.15	100.00
13	1.15	1.15	100.00



TIZMORE AND ASSOCIATES, INC.  
 SURVEYING & MAPPING  
 1000 N. W. 10th St., Ft. Lauderdale, FL 33304  
 PHONE: (305) 555-1111

THE GROVE  
 MAP BOOK ST. PAGES 102-114

POINT OF BEGINNING

SEE SHEET 2 OF 4 FOR GENERAL NOTES AND LEGEND