

RESOLUTION NO. 94- 35  
RESOLUTION OF THE BOARD OF COUNTY  
COMMISSIONERS OF ST. JOHNS COUNTY, FLORIDA  
APPROVING A SUBDIVISION PLAT FOR  
SEAGATE PHASE III, UNIT 2

WHEREAS, GVA Seagate Partners, a Florida general partnership, as Owner, has applied to the Board of County Commissioners of St. Johns County, Florida, for approval to record a subdivision plat known as Seagate Phase III, Unit 2.

NOW, THEREFORE BE IT RESOLVED BY THE BOARD OF COUNTY COMMISSIONERS OF ST. JOHNS COUNTY, FLORIDA, as follows:

Section 1. The above-described subdivision plat and its dedicated areas depicted thereon are conditionally approved and accepted by the Board of County Commissioners of St. Johns County, Florida subject to Section 4 and 5.

Section 2. The Construction Bond is set in the amount of \$203,550.00 and shall delivered to the Clerk of Courts and approved by him prior to recording the plat.

Section 3. A Warranty Bond is not required.

Section 4. The approval and acceptance described in Section 1 shall not take effect until the Clerk has received a title opinion, certificate, or policy pertaining to the real property that is the subject of the aforementioned subdivision plat which opinion, certificate or policy has been approved by the County Attorney or Assistant County Attorney.

Section 5. The approval and acceptance described in Section 1 shall not take effect until the plat has been signed by each of the following departments, person or offices:

- a) Chairman or Vice-Chairman of the Board of County Commissioners of St. Johns County, Florida;
- b) Office of the County Attorney;
- c) County Planning and Zoning Department; and
- d) Clerk of Courts.

The clerk shall not sign or accept the Plat for recording until it has been signed by each of the above persons or entities described in a) through c) above. If the plat is not signed and accepted by the clerk for recording within 14 days from the date hereof, then the above-described conditional approval shall automatically terminate. If the plat is signed by the clerk on or before such time, the conditions described herein shall be deemed to have been met.

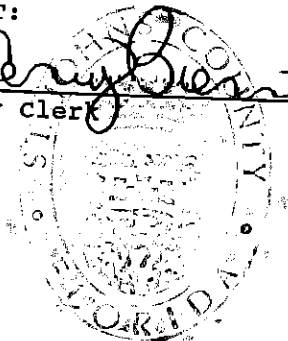
ADOPTED by the Board of County Commissioners of St. Johns County, Florida, this 22nd day of February, 1994.

BOARD OF COUNTY COMMISSIONERS  
OF ST. JOHNS COUNTY, FLORIDA

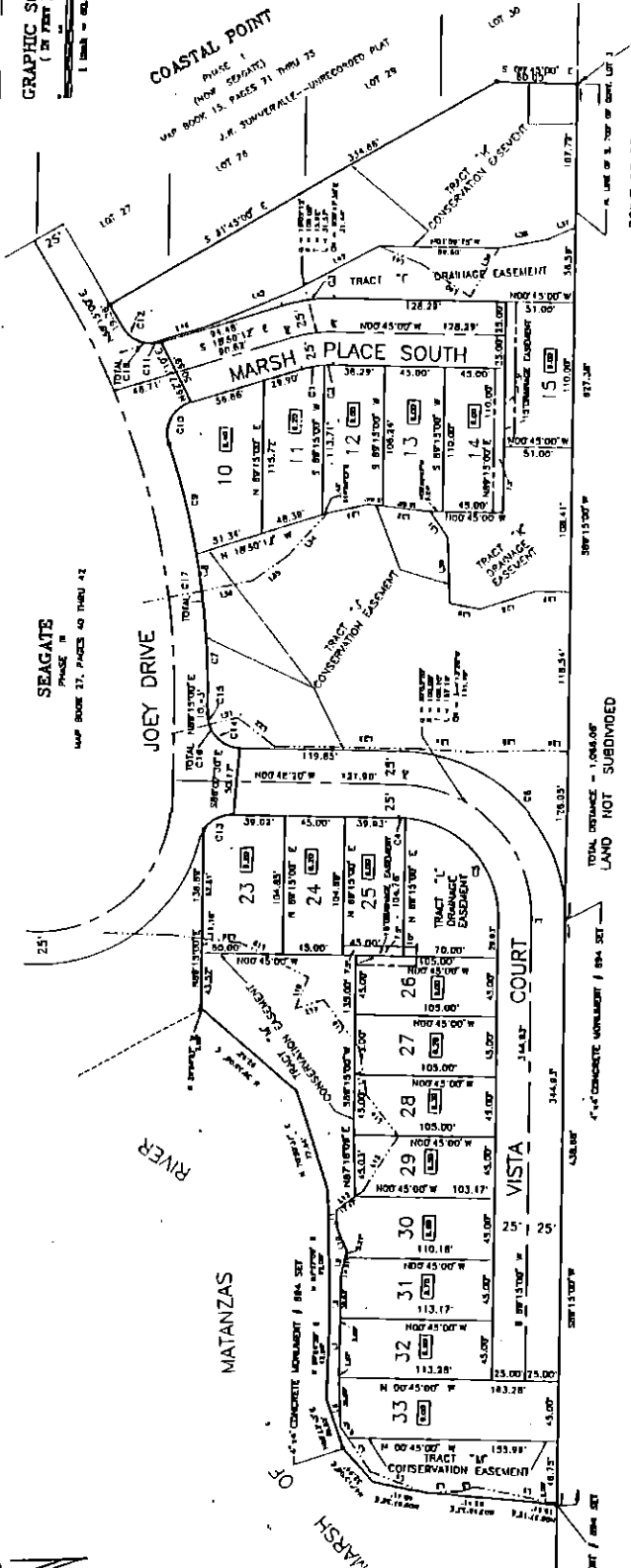
BY: Delean Roberts  
Its Chairman

ATTEST:

Arny Bessert  
Deputy Clerk



GRAPHIC SCALE  
(IN FEET)  
1" = 60.0 FT.



| LOT | AREA (SQ. FT.) | AREA (SQ. YD.) | PERCENTAGE |
|-----|----------------|----------------|------------|
| 10  | 115.72         | 13.18          | 1.08       |
| 11  | 115.72         | 13.18          | 1.08       |
| 12  | 108.14         | 12.35          | 1.08       |
| 13  | 110.00         | 12.50          | 1.08       |
| 14  | 110.00         | 12.50          | 1.08       |
| 15  | 110.00         | 12.50          | 1.08       |
| 23  | 104.87         | 11.98          | 1.08       |
| 24  | 104.87         | 11.98          | 1.08       |
| 25  | 104.87         | 11.98          | 1.08       |
| 26  | 105.00         | 12.00          | 1.08       |
| 27  | 105.00         | 12.00          | 1.08       |
| 28  | 105.00         | 12.00          | 1.08       |
| 29  | 105.00         | 12.00          | 1.08       |
| 30  | 110.18         | 12.60          | 1.08       |
| 31  | 113.17         | 12.91          | 1.08       |
| 32  | 113.28         | 12.92          | 1.08       |
| 33  | 183.28         | 21.00          | 1.08       |

NOTES --- LEGEND

1. REVISIONS BASED ON U.S. GOVERNMENT LAND SURVEY BY A.S. BROWN, NORTH LINE OF SOUTH 700 FEET LONG GOVERNMENT LOT 3, T. 15 N., R. 30 E., S. 1.
2. ALL DIMENSIONS ARE IN FEET AND DECIMALS THEREOF.
3. ALL DIMENSIONS ARE TO THE CENTER OF THE LOT.
4. ALL DIMENSIONS ARE TO THE CENTER OF THE LOT.
5. ALL DIMENSIONS ARE TO THE CENTER OF THE LOT.
6. ALL DIMENSIONS ARE TO THE CENTER OF THE LOT.
7. ALL DIMENSIONS ARE TO THE CENTER OF THE LOT.
8. ALL DIMENSIONS ARE TO THE CENTER OF THE LOT.
9. ALL DIMENSIONS ARE TO THE CENTER OF THE LOT.
10. ALL DIMENSIONS ARE TO THE CENTER OF THE LOT.
11. ALL DIMENSIONS ARE TO THE CENTER OF THE LOT.
12. ALL DIMENSIONS ARE TO THE CENTER OF THE LOT.
13. ALL DIMENSIONS ARE TO THE CENTER OF THE LOT.

PHASE III, UNIT 2  
SEAGATE

PART OF GOVERNMENT LOT 3  
SECTION 15, TOWNSHIP 8 SOUTH, RANGE 30 EAST,  
ST. JOHNS COUNTY, FLORIDA

PREPARED BY: JAMES S. FELLNER, INC.  
300 EAST BAY STREET, SUITE 1  
ST. AUGUSTINE, FL 32084

\*NOTICE: THERE MAY BE ADDITIONAL RESTRICTIONS THAT ARE NOT RECORDED ON THIS PLAN THAT MAY BE FOUND IN THE PUBLIC RECORDS OF THIS COUNTY.