

RESOLUTION NO. 94- 81 . . .
RESOLUTION OF THE BOARD OF COUNTY
COMMISSIONERS OF ST. JOHNS COUNTY, FLORIDA
APPROVING A SUBDIVISION PLAT FOR
OCEAN GALLERY 3

WHEREAS, St. Augustine Ocean Gallery Partners, a Florida general partnership, as Owner, has applied to the Board of County Commissioners of St. Johns County, Florida, for approval to record a subdivision plat known as Ocean Gallery 3.

NOW, THEREFORE BE IT RESOLVED BY THE BOARD OF COUNTY COMMISSIONERS OF ST. JOHNS COUNTY, FLORIDA, as follows:

Section 1. The above-described subdivision plat and its dedicated areas depicted thereon are conditionally approved and accepted by the Board of County Commissioners of St. Johns County, Florida subject to Section 4 and 5.

Section 2. A Construction Bond is not required.

Section 3. A Warranty Bond is not required.

Section 4. The approval and acceptance described in Section 1 shall not take effect until the Clerk has received a title opinion, certificate, or policy pertaining to the real property that is the subject of the aforementioned subdivision plat which opinion, certificate or policy has been approved by the County Attorney or Assistant County Attorney.

Section 5. The approval and acceptance described in Section 1 shall not take effect until the plat has been signed by each of the following departments, person or offices:

- a) Chairman or Vice-Chairman of the Board of County Commissioners of St. Johns County, Florida;
- b) Office of the County Attorney;
- c) County Planning and Zoning Department; and
- d) Clerk of Courts.

The Clerk shall not sign or accept the Plat for recording until it has been signed by each of the above persons or entities described in a) through c) above. If the plat is not signed and accepted by the Clerk for recording within 14 days from the date hereof, then the above-described conditional approval shall automatically terminate. If the plat is signed by the Clerk on or before such time, the conditions described herein shall be deemed to have been met.

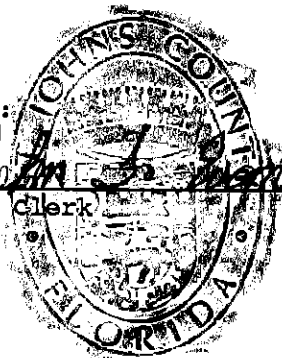
ADOPTED by the Board of County Commissioners of St. Johns County, Florida, this 10 day of May, 19 94

BOARD OF COUNTY COMMISSIONERS
OF ST. JOHNS COUNTY, FLORIDA

BY: Delean Roberts
Its

ATTEST:

John J. Roberts
Deputy Clerk



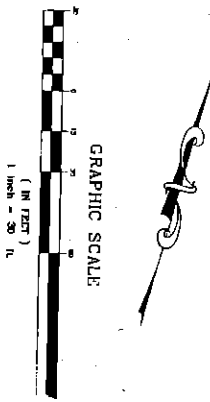
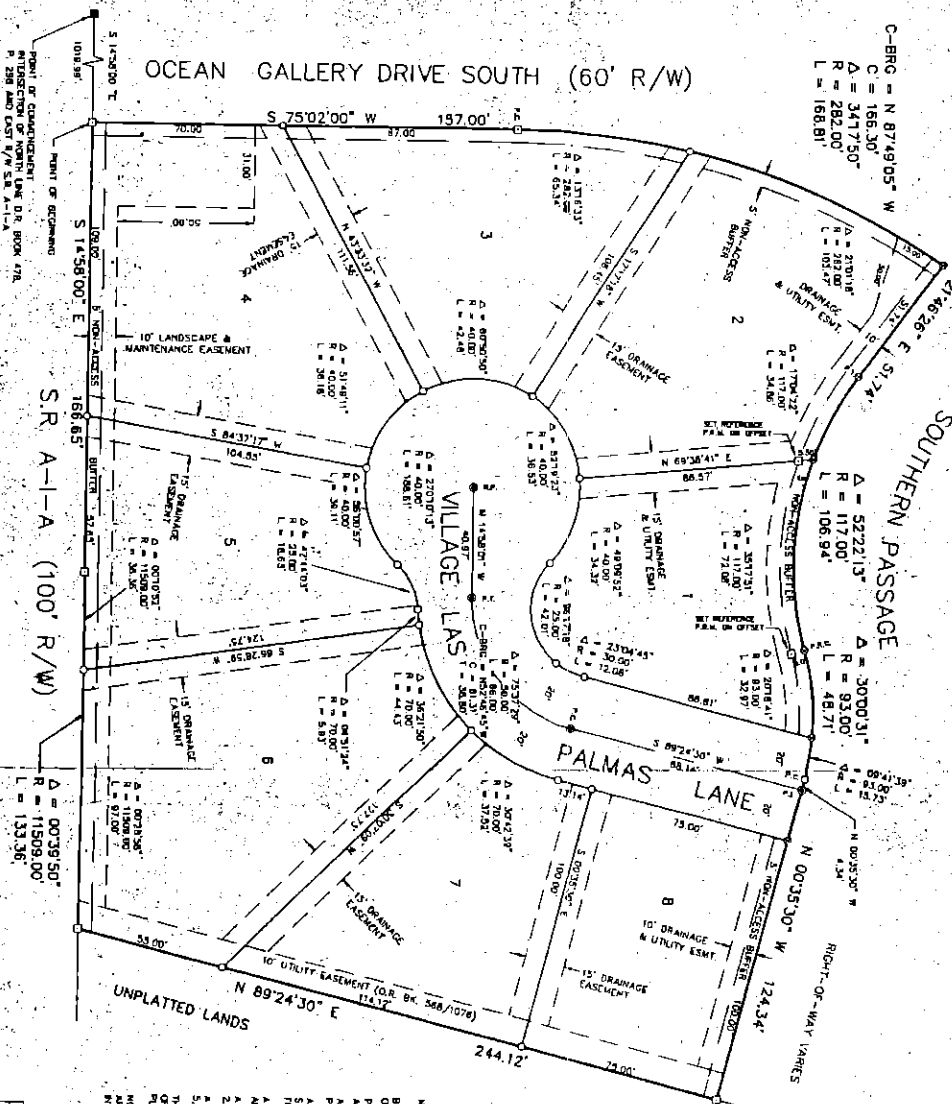
OCEAN GALLERY HOMES

UNIT 3

A PORTION OF GOVERNMENT LOT 4, SECTION 15,
TOWNSHIP 8 SOUTH, RANGE 30 EAST, ST. JOHNS COUNTY, FLORIDA

Map Book Page

Sheet 2 of 2



KEY

■	DIPOLES "A" CHNK
□	DIPOLES "B" CHNK
○	DIPOLES "C" CHNK
●	DIPOLES "D" CHNK
△	DIPOLES "E" CHNK
◇	DIPOLES "F" CHNK
▽	DIPOLES "G" CHNK
◆	DIPOLES "H" CHNK
◇	DIPOLES "I" CHNK
◇	DIPOLES "J" CHNK
◇	DIPOLES "K" CHNK
◇	DIPOLES "L" CHNK
◇	DIPOLES "M" CHNK
◇	DIPOLES "N" CHNK
◇	DIPOLES "O" CHNK
◇	DIPOLES "P" CHNK
◇	DIPOLES "Q" CHNK
◇	DIPOLES "R" CHNK
◇	DIPOLES "S" CHNK
◇	DIPOLES "T" CHNK
◇	DIPOLES "U" CHNK
◇	DIPOLES "V" CHNK
◇	DIPOLES "W" CHNK
◇	DIPOLES "X" CHNK
◇	DIPOLES "Y" CHNK
◇	DIPOLES "Z" CHNK

NOTES

1. BASE OF BEARING: THE EAST-NORTH-EAST-MAY LINE OF S17.41-1-A BEARS S 142° 00' E.
2. ALL DISTANCES ARE IN FEET AND DECIMALS THEREOF.
3. ALL SIDE LOT LINES ARE PERPENDICULAR TO THE BOUNDARY LINES OF PALMAS LANE (NOT BEING TO OUTSIDE BOUNDARY CORNERS).
4. A TEN FOOT FULL UTILITY EASEMENT (SUBJECT TO THE RIGHTS OF ALL LOTS) IS RESERVED ALONG THE EAST-NORTH-EAST-MAY LINE OF S17.41-1-A BEARING S 142° 00' E.
5. A TEN FOOT FULL UTILITY EASEMENT (SUBJECT TO THE RIGHTS OF ALL LOTS) IS RESERVED ALONG THE EAST-NORTH-EAST-MAY LINE OF S17.41-1-A BEARING S 142° 00' E.
6. A TEN FOOT FULL UTILITY EASEMENT (SUBJECT TO THE RIGHTS OF ALL LOTS) IS RESERVED ALONG THE EAST-NORTH-EAST-MAY LINE OF S17.41-1-A BEARING S 142° 00' E.
7. A TEN FOOT FULL UTILITY EASEMENT (SUBJECT TO THE RIGHTS OF ALL LOTS) IS RESERVED ALONG THE EAST-NORTH-EAST-MAY LINE OF S17.41-1-A BEARING S 142° 00' E.
8. A TEN FOOT FULL UTILITY EASEMENT (SUBJECT TO THE RIGHTS OF ALL LOTS) IS RESERVED ALONG THE EAST-NORTH-EAST-MAY LINE OF S17.41-1-A BEARING S 142° 00' E.
9. A TEN FOOT FULL UTILITY EASEMENT (SUBJECT TO THE RIGHTS OF ALL LOTS) IS RESERVED ALONG THE EAST-NORTH-EAST-MAY LINE OF S17.41-1-A BEARING S 142° 00' E.
10. A TEN FOOT FULL UTILITY EASEMENT (SUBJECT TO THE RIGHTS OF ALL LOTS) IS RESERVED ALONG THE EAST-NORTH-EAST-MAY LINE OF S17.41-1-A BEARING S 142° 00' E.
11. A TEN FOOT FULL UTILITY EASEMENT (SUBJECT TO THE RIGHTS OF ALL LOTS) IS RESERVED ALONG THE EAST-NORTH-EAST-MAY LINE OF S17.41-1-A BEARING S 142° 00' E.
12. A TEN FOOT FULL UTILITY EASEMENT (SUBJECT TO THE RIGHTS OF ALL LOTS) IS RESERVED ALONG THE EAST-NORTH-EAST-MAY LINE OF S17.41-1-A BEARING S 142° 00' E.
13. A TEN FOOT FULL UTILITY EASEMENT (SUBJECT TO THE RIGHTS OF ALL LOTS) IS RESERVED ALONG THE EAST-NORTH-EAST-MAY LINE OF S17.41-1-A BEARING S 142° 00' E.
14. A TEN FOOT FULL UTILITY EASEMENT (SUBJECT TO THE RIGHTS OF ALL LOTS) IS RESERVED ALONG THE EAST-NORTH-EAST-MAY LINE OF S17.41-1-A BEARING S 142° 00' E.
15. A TEN FOOT FULL UTILITY EASEMENT (SUBJECT TO THE RIGHTS OF ALL LOTS) IS RESERVED ALONG THE EAST-NORTH-EAST-MAY LINE OF S17.41-1-A BEARING S 142° 00' E.
16. A TEN FOOT FULL UTILITY EASEMENT (SUBJECT TO THE RIGHTS OF ALL LOTS) IS RESERVED ALONG THE EAST-NORTH-EAST-MAY LINE OF S17.41-1-A BEARING S 142° 00' E.
17. A TEN FOOT FULL UTILITY EASEMENT (SUBJECT TO THE RIGHTS OF ALL LOTS) IS RESERVED ALONG THE EAST-NORTH-EAST-MAY LINE OF S17.41-1-A BEARING S 142° 00' E.
18. A TEN FOOT FULL UTILITY EASEMENT (SUBJECT TO THE RIGHTS OF ALL LOTS) IS RESERVED ALONG THE EAST-NORTH-EAST-MAY LINE OF S17.41-1-A BEARING S 142° 00' E.
19. A TEN FOOT FULL UTILITY EASEMENT (SUBJECT TO THE RIGHTS OF ALL LOTS) IS RESERVED ALONG THE EAST-NORTH-EAST-MAY LINE OF S17.41-1-A BEARING S 142° 00' E.
20. A TEN FOOT FULL UTILITY EASEMENT (SUBJECT TO THE RIGHTS OF ALL LOTS) IS RESERVED ALONG THE EAST-NORTH-EAST-MAY LINE OF S17.41-1-A BEARING S 142° 00' E.

LOT NUMBER	APPROXIMATE ACRES
1	17.2
2	17.2
3	17.2
4	17.2
5	17.2
6	17.2
7	17.2
8	17.2
9	17.2
10	17.2
11	17.2
12	17.2
13	17.2
14	17.2
15	17.2
16	17.2
17	17.2
18	17.2
19	17.2
20	17.2

FLORIDA COASTAL SURVEY
 1937 OCEAN DRIVE, SUITE 100
 ST. AUGUSTINE, FLORIDA 32080
 (904) 825-1000