

RESOLUTION NO. 95-109
RESOLUTION OF THE BOARD OF COUNTY
COMMISSIONERS OF ST. JOHNS COUNTY, FLORIDA
APPROVING A SUBDIVISION PLAT FOR
MARSH LANDING UNIT TWENTY EIGHT

WHEREAS, Fletcher Realty III, Inc., a Florida Corporation, as Owner, has applied to the Board of County Commissioners of St. Johns County, Florida, for approval to record a subdivision plat known as Marsh Landing Unit Twenty-Eight.

NOW, THEREFORE BE IT RESOLVED BY THE BOARD OF COUNTY COMMISSIONERS OF ST. JOHNS COUNTY, FLORIDA, as follows:

Section 1. The above-described subdivision plat and its dedicated areas depicted thereon are conditionally approved and accepted by the Board of County Commissioners of St. Johns County, Florida subject to Section 2, 4, and 5.

Section 2. The Construction Bond is set in the amount of \$522,738.00 and shall be delivered to the Clerk of Courts and approved by him prior to recording the plat.

Section 3. A Warranty Bond is not required.

Section 4. The approval and acceptance described in Section 1 shall not take effect until the Clerk has received a title opinion, certificate, or policy pertaining to the real property that is the subject of the aforementioned subdivision plat which opinion, certificate or policy is in a form acceptable to the County Attorney or Assistant County Attorney.

Section 5. The approval and acceptance described in Section 1 shall not take effect until the plat has been signed by each of the following departments, person or offices:

- a) Chairman or Vice-Chairman of the Board of County Commissioners of St. Johns County, Florida;
- b) Office of the County Attorney;
- c) County Planning and Zoning Department; and
- d) Clerk of Courts.

The Clerk shall not sign or accept the Plat for recording until it has been signed by each of the above persons or entities described in a) through c) above. If the plat is not signed and accepted by the Clerk for recording within 14 days from the date hereof, then the above-described conditional approval shall automatically terminate. If the plat is signed by the Clerk on or before such time, the conditions described herein shall be deemed to have been met.

ADOPTED by the Board of County Commissioners of St. Johns County, Florida, this 13 day of June, 1995.



BOARD OF COUNTY COMMISSIONERS
OF ST. JOHNS COUNTY, FLORIDA

BY: Barbara Ward
Its

ATTEST:

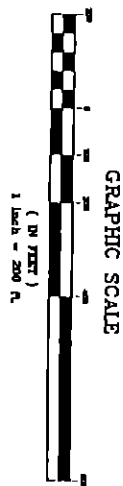
Inna Cacetti
Deputy Clerk

MARSH LANDING AT SAWGRASS UNIT TWENTY - EIGHT

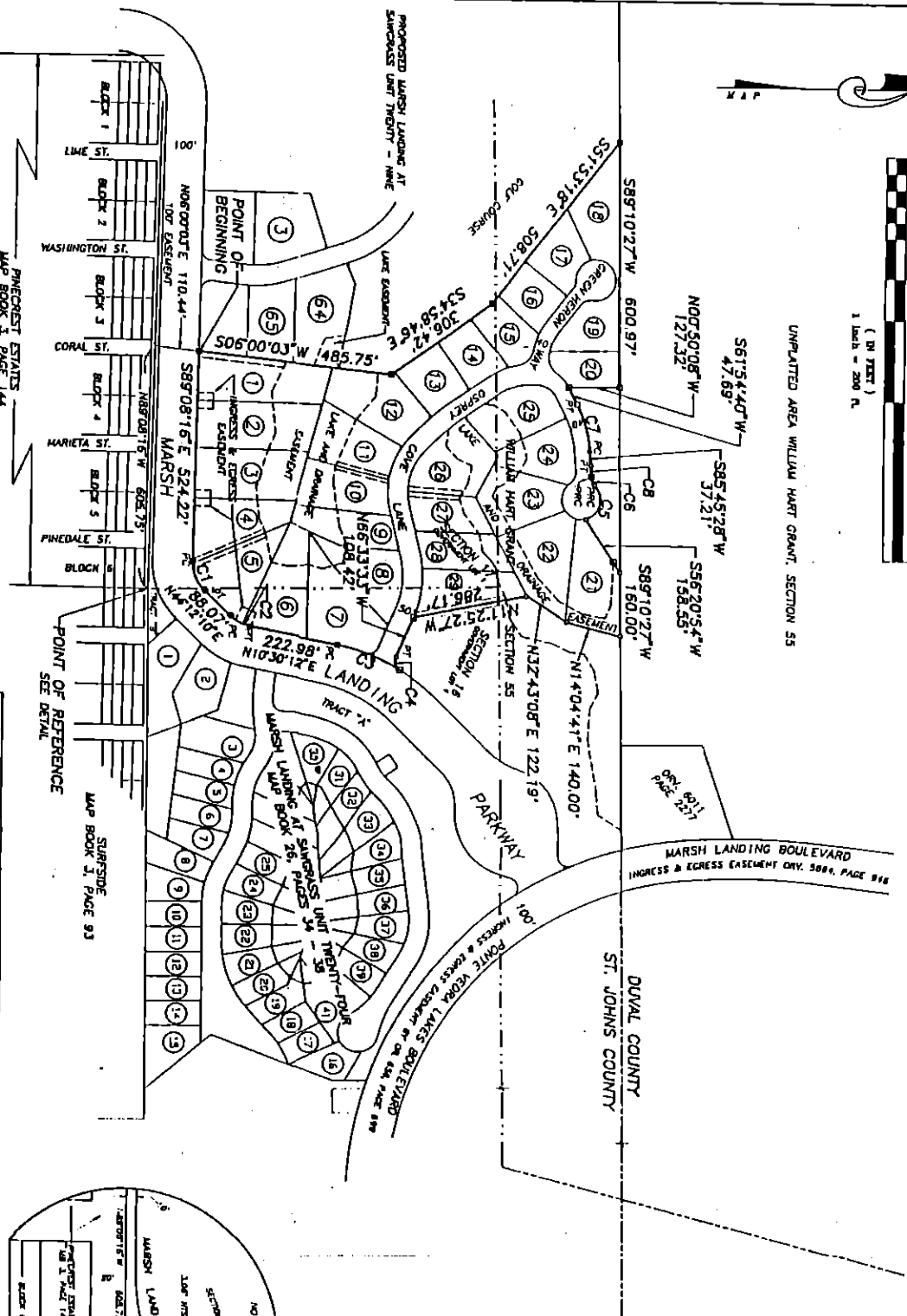
A PART OF GOVERNMENT LOT 4, SECTION 16, AND GOVERNMENT LOT 1, SECTION 17 AND THE WILLIAM HART GRANT, SECTION 55, TOWNSHIP 3 SOUTH, RANGE 29 EAST, ST. JOHNS COUNTY, FLORIDA.

MAP BOOK PAGE
SHEET 3 OF 5 SHEETS

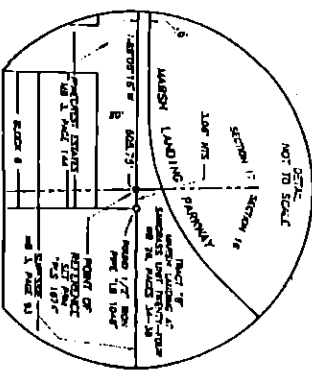
NOTICE: THERE MAY BE ADDITIONAL RESTRICTIONS THAT ARE NOT RECORDED ON THIS PLAT THAT MAY BE FOUND IN THE PUBLIC RECORDS OF THIS COUNTY.



UNPLATTED AREA WILLIAM HART GRANT, SECTION 55

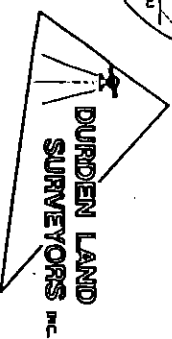


CURVE	POINTS	LENGTH	TANGENT	CHORD	BEARING	BEARING
C1	100.00'	81.44'	43.13'	92.37'	S81°58'57"E	S81°13'
C2	100.00'	58.87'	32.37'	62.71'	S82°11'11"E	S81°15'57"
C3	170.00'	188.18'	65.52'	186.42'	N80°44'57"E	S82°17'28"
C4	35.00'	31.83'	15.82'	33.31'	S72°11'04"E	S81°18'42"
C5	50.00'	46.82'	24.09'	47.19'	N1°44'31"W	S81°15'31"
C6	30.00'	28.27'	14.27'	28.44'	S17°31'45"W	S81°07'04"
C7	20.00'	18.84'	9.62'	19.00'	S71°50'04"W	S81°07'04"
C8	100.00'	28.84'	13.83'	28.84'	S81°07'04"W	S81°07'04"



- LEGEND
- RL DENOTES RADIAL LINE
 - PC DENOTES POINT OF CURVATURE
 - PT DENOTES POINT OF TANGENCY
 - PCQ DENOTES POINT OF CURVATURE QUANTUM
 - PCD DENOTES POINT OF COMPOUND CURVATURE
 - R DENOTES RADIAL POINT
 - O DENOTES POINT OF ORIENTATION
 - DENOTES PERMANENT REFERENCE MONUMENT SET
 - ▲ DENOTES PERMANENT REFERENCE MONUMENTS ARE STAMPED "PLAT" TO INDICATE THEY WERE FOUND
 - DENOTES PERMANENT REFERENCE MONUMENT FOUND
 - △ DENOTES PERMANENT CONTROL POINT

PRELIMINARY
APR 27 1995
R. A. Durden & Assoc., Inc.



POST OFFICE BOX 58970
1103 SOUTH THIRD STREET
JACKSONVILLE FLORIDA 32240