

RESOLUTION NO. 95-125
RESOLUTION OF THE BOARD OF COUNTY
COMMISSIONERS OF ST. JOHNS COUNTY, FLORIDA
APPROVING A SUBDIVISION PLAT FOR
SUMMERCHASE AT JULINGTON CREEK UNIT 2

WHEREAS, Summerchase Joint Venture, a Florida General Partnership, as Owner, has applied to the Board of County Commissioners of St. Johns County, Florida, for approval to record a subdivision plat known as Summerchase at Julington Creek Unit 2.

NOW, THEREFORE BE IT RESOLVED BY THE BOARD OF COUNTY COMMISSIONERS OF ST. JOHNS COUNTY, FLORIDA, as follows:

Section 1. The above-described subdivision plat and its dedicated areas depicted thereon are conditionally approved and accepted by the Board of County Commissioners of St. Johns County, Florida subject to Section 2, 4, and 5.

Section 2. The Construction Bond is set in the amount of \$84,568.00 and shall be delivered to the Clerk of Courts and approved by him prior to recording the plat.

Section 3. A Warranty Bond is set in the amount of \$42,284.00.

Section 4. The approval and acceptance described in Section 1 shall not take effect until the Clerk has received a title opinion, certificate, or policy pertaining to the real property that is the subject of the aforementioned subdivision plat which opinion, certificate or policy is in a form acceptable to the County Attorney or Assistant County Attorney.


Section 5. The approval and acceptance described in Section 1 shall not take effect until the plat has been signed by each of the following departments, person or offices:

- a) Chairman or Vice-Chairman of the Board of County Commissioners of St. Johns County, Florida;
- b) Office of the County Attorney;
- c) County Planning and Zoning Department; and
- d) Clerk of Courts.

The Clerk shall not sign or accept the Plat for recording until it has been signed by each of the above persons or entities described in a) through c) above. If the plat is not signed and accepted by the Clerk for recording within 14 days from the date hereof, then the above-described conditional approval shall automatically terminate. If the plat is signed by the Clerk on or before such time, the conditions described herein shall be deemed to have been met.

ADOPTED by the Board of County Commissioners of St. Johns County, Florida, this 11th day of July, 1995.

BOARD OF COUNTY COMMISSIONERS
OF ST. JOHNS COUNTY, FLORIDA

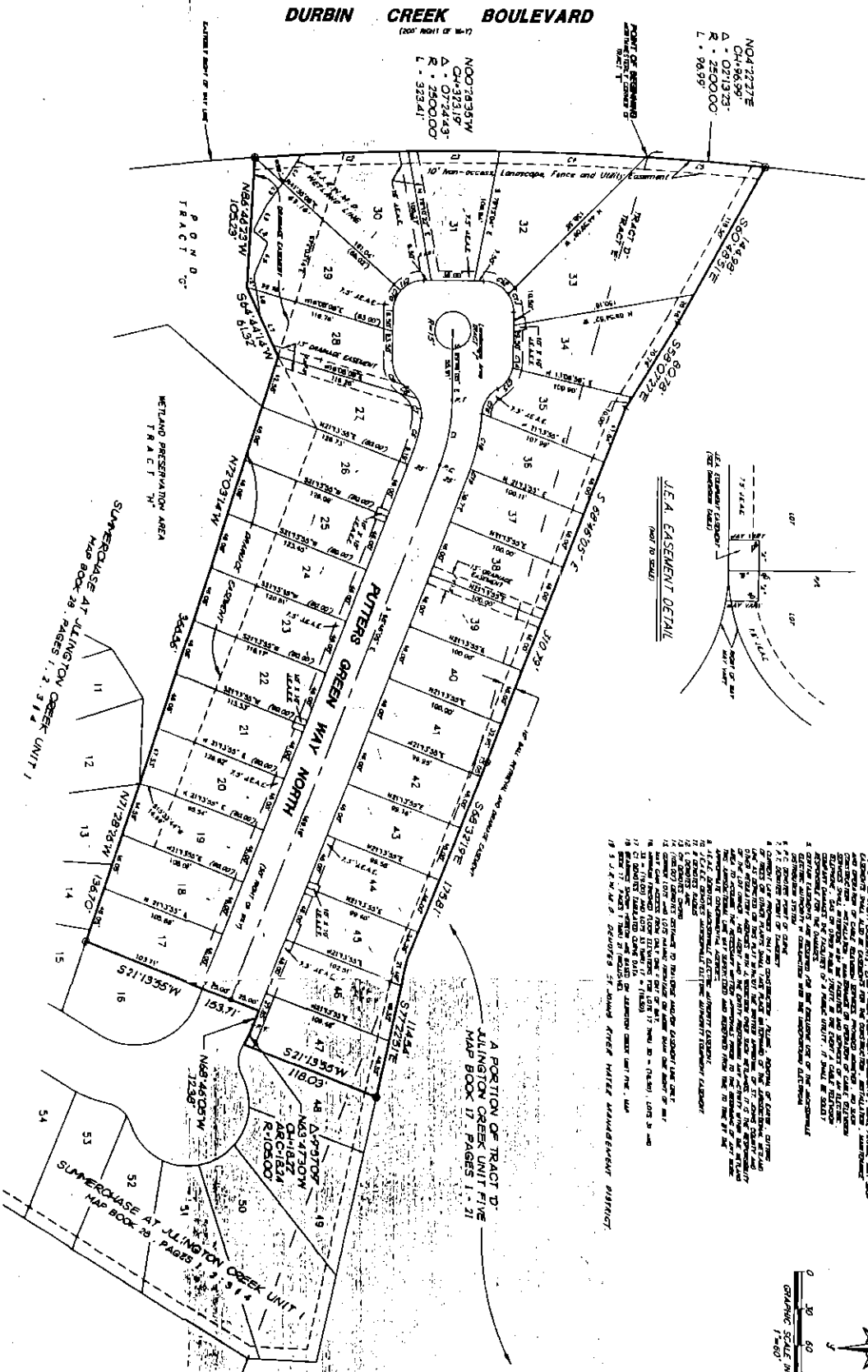
BY: 
Its

ATTEST:


Deputy Clerk

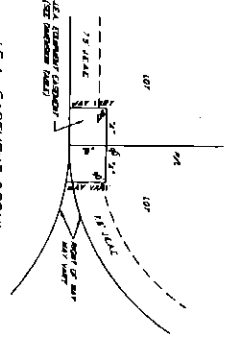
SummerChase at Jullington Creek Unit 2

BEING A RESULT OF A PORTION OF TRACTS D, AND E OF JULLINGTON CREEK UNIT FIVE, AS RECORDED IN MAP BOOK 17, PAGES 1 THROUGH 21, INCLUSIVE OF THE PUBLIC RECORDS OF ST. JOHNS COUNTY, FLORIDA.

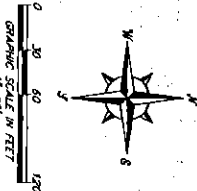


DIVISION TABLE

1	2	3	4
100	100	100	100



- NOTES**
1. SHOWN FOR INFORMATION ONLY. THIS PLAN IS A SUMMARY OF THE RECORDS OF THE PUBLIC RECORDS OF ST. JOHNS COUNTY, FLORIDA, AND IS NOT A SUBSTITUTE FOR THE ORIGINAL RECORDS.
 2. THE DIMENSIONS SHOWN ON THIS PLAN ARE BASED ON THE RECORDS OF THE PUBLIC RECORDS OF ST. JOHNS COUNTY, FLORIDA, AND ARE SUBJECT TO THE ACCURACY OF THE RECORDS.
 3. THE DIMENSIONS SHOWN ON THIS PLAN ARE BASED ON THE RECORDS OF THE PUBLIC RECORDS OF ST. JOHNS COUNTY, FLORIDA, AND ARE SUBJECT TO THE ACCURACY OF THE RECORDS.
 4. THE DIMENSIONS SHOWN ON THIS PLAN ARE BASED ON THE RECORDS OF THE PUBLIC RECORDS OF ST. JOHNS COUNTY, FLORIDA, AND ARE SUBJECT TO THE ACCURACY OF THE RECORDS.
 5. THE DIMENSIONS SHOWN ON THIS PLAN ARE BASED ON THE RECORDS OF THE PUBLIC RECORDS OF ST. JOHNS COUNTY, FLORIDA, AND ARE SUBJECT TO THE ACCURACY OF THE RECORDS.
 6. THE DIMENSIONS SHOWN ON THIS PLAN ARE BASED ON THE RECORDS OF THE PUBLIC RECORDS OF ST. JOHNS COUNTY, FLORIDA, AND ARE SUBJECT TO THE ACCURACY OF THE RECORDS.
 7. THE DIMENSIONS SHOWN ON THIS PLAN ARE BASED ON THE RECORDS OF THE PUBLIC RECORDS OF ST. JOHNS COUNTY, FLORIDA, AND ARE SUBJECT TO THE ACCURACY OF THE RECORDS.
 8. THE DIMENSIONS SHOWN ON THIS PLAN ARE BASED ON THE RECORDS OF THE PUBLIC RECORDS OF ST. JOHNS COUNTY, FLORIDA, AND ARE SUBJECT TO THE ACCURACY OF THE RECORDS.
 9. THE DIMENSIONS SHOWN ON THIS PLAN ARE BASED ON THE RECORDS OF THE PUBLIC RECORDS OF ST. JOHNS COUNTY, FLORIDA, AND ARE SUBJECT TO THE ACCURACY OF THE RECORDS.
 10. THE DIMENSIONS SHOWN ON THIS PLAN ARE BASED ON THE RECORDS OF THE PUBLIC RECORDS OF ST. JOHNS COUNTY, FLORIDA, AND ARE SUBJECT TO THE ACCURACY OF THE RECORDS.



CURVE TABLE

STATION	CHORD BEARING	CHORD DISTANCE	ARC BEARING	ARC DISTANCE
1+00	N 89° 59' 59" W	1.0000	89° 59' 59"	1.0000
1+01	N 89° 59' 59" W	1.0000	89° 59' 59"	1.0000
1+02	N 89° 59' 59" W	1.0000	89° 59' 59"	1.0000
1+03	N 89° 59' 59" W	1.0000	89° 59' 59"	1.0000
1+04	N 89° 59' 59" W	1.0000	89° 59' 59"	1.0000
1+05	N 89° 59' 59" W	1.0000	89° 59' 59"	1.0000
1+06	N 89° 59' 59" W	1.0000	89° 59' 59"	1.0000
1+07	N 89° 59' 59" W	1.0000	89° 59' 59"	1.0000
1+08	N 89° 59' 59" W	1.0000	89° 59' 59"	1.0000
1+09	N 89° 59' 59" W	1.0000	89° 59' 59"	1.0000
1+10	N 89° 59' 59" W	1.0000	89° 59' 59"	1.0000
1+11	N 89° 59' 59" W	1.0000	89° 59' 59"	1.0000
1+12	N 89° 59' 59" W	1.0000	89° 59' 59"	1.0000
1+13	N 89° 59' 59" W	1.0000	89° 59' 59"	1.0000
1+14	N 89° 59' 59" W	1.0000	89° 59' 59"	1.0000
1+15	N 89° 59' 59" W	1.0000	89° 59' 59"	1.0000
1+16	N 89° 59' 59" W	1.0000	89° 59' 59"	1.0000
1+17	N 89° 59' 59" W	1.0000	89° 59' 59"	1.0000
1+18	N 89° 59' 59" W	1.0000	89° 59' 59"	1.0000
1+19	N 89° 59' 59" W	1.0000	89° 59' 59"	1.0000
1+20	N 89° 59' 59" W	1.0000	89° 59' 59"	1.0000
1+21	N 89° 59' 59" W	1.0000	89° 59' 59"	1.0000
1+22	N 89° 59' 59" W	1.0000	89° 59' 59"	1.0000
1+23	N 89° 59' 59" W	1.0000	89° 59' 59"	1.0000
1+24	N 89° 59' 59" W	1.0000	89° 59' 59"	1.0000
1+25	N 89° 59' 59" W	1.0000	89° 59' 59"	1.0000
1+26	N 89° 59' 59" W	1.0000	89° 59' 59"	1.0000
1+27	N 89° 59' 59" W	1.0000	89° 59' 59"	1.0000
1+28	N 89° 59' 59" W	1.0000	89° 59' 59"	1.0000
1+29	N 89° 59' 59" W	1.0000	89° 59' 59"	1.0000
1+30	N 89° 59' 59" W	1.0000	89° 59' 59"	1.0000
1+31	N 89° 59' 59" W	1.0000	89° 59' 59"	1.0000
1+32	N 89° 59' 59" W	1.0000	89° 59' 59"	1.0000
1+33	N 89° 59' 59" W	1.0000	89° 59' 59"	1.0000
1+34	N 89° 59' 59" W	1.0000	89° 59' 59"	1.0000
1+35	N 89° 59' 59" W	1.0000	89° 59' 59"	1.0000
1+36	N 89° 59' 59" W	1.0000	89° 59' 59"	1.0000
1+37	N 89° 59' 59" W	1.0000	89° 59' 59"	1.0000
1+38	N 89° 59' 59" W	1.0000	89° 59' 59"	1.0000
1+39	N 89° 59' 59" W	1.0000	89° 59' 59"	1.0000
1+40	N 89° 59' 59" W	1.0000	89° 59' 59"	1.0000
1+41	N 89° 59' 59" W	1.0000	89° 59' 59"	1.0000
1+42	N 89° 59' 59" W	1.0000	89° 59' 59"	1.0000
1+43	N 89° 59' 59" W	1.0000	89° 59' 59"	1.0000
1+44	N 89° 59' 59" W	1.0000	89° 59' 59"	1.0000
1+45	N 89° 59' 59" W	1.0000	89° 59' 59"	1.0000
1+46	N 89° 59' 59" W	1.0000	89° 59' 59"	1.0000
1+47	N 89° 59' 59" W	1.0000	89° 59' 59"	1.0000
1+48	N 89° 59' 59" W	1.0000	89° 59' 59"	1.0000
1+49	N 89° 59' 59" W	1.0000	89° 59' 59"	1.0000
1+50	N 89° 59' 59" W	1.0000	89° 59' 59"	1.0000
1+51	N 89° 59' 59" W	1.0000	89° 59' 59"	1.0000
1+52	N 89° 59' 59" W	1.0000	89° 59' 59"	1.0000
1+53	N 89° 59' 59" W	1.0000	89° 59' 59"	1.0000
1+54	N 89° 59' 59" W	1.0000	89° 59' 59"	1.0000
1+55	N 89° 59' 59" W	1.0000	89° 59' 59"	1.0000
1+56	N 89° 59' 59" W	1.0000	89° 59' 59"	1.0000
1+57	N 89° 59' 59" W	1.0000	89° 59' 59"	1.0000
1+58	N 89° 59' 59" W	1.0000	89° 59' 59"	1.0000
1+59	N 89° 59' 59" W	1.0000	89° 59' 59"	1.0000
1+60	N 89° 59' 59" W	1.0000	89° 59' 59"	1.0000

LINE TABLE

LINE NUMBER	BEARING	DISTANCE
1	N 89° 59' 59" W	1.0000
2	N 89° 59' 59" W	1.0000
3	N 89° 59' 59" W	1.0000
4	N 89° 59' 59" W	1.0000
5	N 89° 59' 59" W	1.0000
6	N 89° 59' 59" W	1.0000
7	N 89° 59' 59" W	1.0000
8	N 89° 59' 59" W	1.0000
9	N 89° 59' 59" W	1.0000
10	N 89° 59' 59" W	1.0000
11	N 89° 59' 59" W	1.0000
12	N 89° 59' 59" W	1.0000
13	N 89° 59' 59" W	1.0000
14	N 89° 59' 59" W	1.0000
15	N 89° 59' 59" W	1.0000
16	N 89° 59' 59" W	1.0000
17	N 89° 59' 59" W	1.0000
18	N 89° 59' 59" W	1.0000
19	N 89° 59' 59" W	1.0000
20	N 89° 59' 59" W	1.0000
21	N 89° 59' 59" W	1.0000
22	N 89° 59' 59" W	1.0000
23	N 89° 59' 59" W	1.0000
24	N 89° 59' 59" W	1.0000
25	N 89° 59' 59" W	1.0000
26	N 89° 59' 59" W	1.0000
27	N 89° 59' 59" W	1.0000
28	N 89° 59' 59" W	1.0000
29	N 89° 59' 59" W	1.0000
30	N 89° 59' 59" W	1.0000
31	N 89° 59' 59" W	1.0000
32	N 89° 59' 59" W	1.0000
33	N 89° 59' 59" W	1.0000
34	N 89° 59' 59" W	1.0000
35	N 89° 59' 59" W	1.0000
36	N 89° 59' 59" W	1.0000
37	N 89° 59' 59" W	1.0000
38	N 89° 59' 59" W	1.0000
39	N 89° 59' 59" W	1.0000
40	N 89° 59' 59" W	1.0000
41	N 89° 59' 59" W	1.0000
42	N 89° 59' 59" W	1.0000
43	N 89° 59' 59" W	1.0000
44	N 89° 59' 59" W	1.0000
45	N 89° 59' 59" W	1.0000
46	N 89° 59' 59" W	1.0000
47	N 89° 59' 59" W	1.0000
48	N 89° 59' 59" W	1.0000
49	N 89° 59' 59" W	1.0000
50	N 89° 59' 59" W	1.0000
51	N 89° 59' 59" W	1.0000
52	N 89° 59' 59" W	1.0000
53	N 89° 59' 59" W	1.0000
54	N 89° 59' 59" W	1.0000

PREPARED BY: JULLINGTON ASSOCIATES, INC.
11000 JULLINGTON DRIVE
ST. JOHNS COUNTY, FLORIDA 32057-1100