

RESOLUTION 95- 197

A RESOLUTION OF THE ST. JOHNS COUNTY BOARD OF COUNTY COMMISSIONERS FINDING NO BASIS FOR CLAIMING A COUNTY INTEREST IN THAT PORTION OF OLD DIXIE HIGHWAY DESCRIBED IN SCHEDULE "A" HERETO.

WHEREAS, that portion of land described in Schedule "A" hereto is known as Old Dixie Highway and is under no known use as a public right of way; and

WHEREAS, St. Johns County Board of County Commissioners upon due inquiry has no known interest in or control over the portions of Old Dixie Highway described in Schedule "A" hereto; and

WHEREAS, Gran Central Corporation has requested the St. Johns County Board of County Commissioners clarify its position in regards to said portion of Old Dixie Highway described in Schedule "A" hereto.

WHEREAS, Gran Central Corporation has requested that St. Johns County vacate said portions of Old Dixie Highway, but as the County only has authority to so vacate if it is determined that the County has control of said right of way.

NOW THEREFORE, BE IT RESOLVED by the Board of County Commissioners of St. Johns County, Florida, as follows:

(1) It is hereby found that promoting clear title to land in St. Johns County, Florida is in the public interest.

(2) That having after due inquiry found no evidence of present or past St. Johns County control or interest in the land known as Old Dixie Highway as described in Schedule "A" hereto, no past or present claim to County control, interest, or ownership in said lands is made by St. Johns County.

PASSED AND ADOPTED by the Board of County Commissioners of St. Johns County, State of Florida, this 14th day of November, 1995.

BOARD OF COUNTY COMMISSIONERS  
OF ST. JOHNS COUNTY, FLORIDA

By: Paulina Ward  
Its Chair

ATTEST: CARL "BUD" MARKEL, CLERK

By: Carl Bud Markel  
Clerk

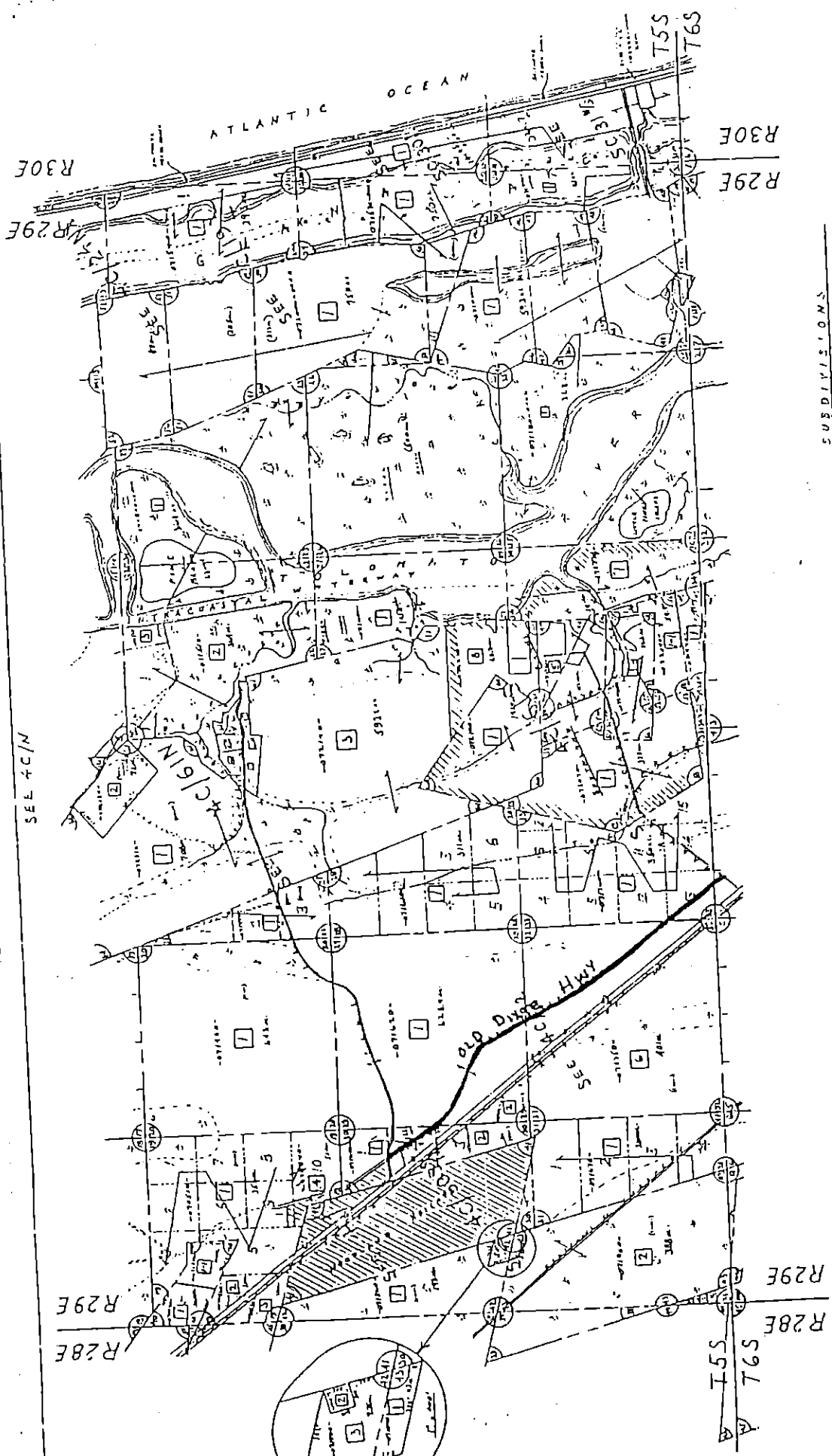
SCHEDULE "A"

That certain portion of a roadway known as Old Dixie Highway lying south of the southern right-of-way line of Pine Island Road and north of the northerly right-of-way line of Shannon Road, within Sections 28, 29, 30, 32, and 33, Township 5 South, Range 29 East, and Section 4, Township 6 South, Range 29 East, St. Johns County, Florida, being located within the boundaries of the following described property:

Commence at the southwest corner of Section 33, Township 5 South, Range 29 East, St. Johns County, Florida; Thence South 88 degrees 10 minutes 27 seconds East, along the south line of said Section 33, for a distance of 313.68 feet to a concrete monument located along the northeasterly right-of-way line for U.S. Highway No. One (a 150 foot right-of-way as now established) and the beginning of the herein described parcel of land; Thence North 37 degrees 52 minutes 29 seconds West, along the northeasterly right-of-way line for U.S. Highway No. One (a 150 foot right-of-way as now established), a distance of 517.62 feet to a concrete monument located along the east line of Section 32; Thence continue North 37 degrees 52 minutes 29 seconds West, along the northeasterly right-of-way line for U.S. Highway No. One (a 150 foot right-of-way as now established), for a distance of 6084.16 feet to an iron pipe located along the south line of Section 29; Thence North 37 degrees 52 minutes 29 seconds West, along the northeasterly right-of-way line of U.S. Highway No. One (a 150 foot right-of-way as now established), for a distance of 4912.79 feet, more or less, to a concrete monument; Thence North 79 degrees 19 minutes 25 seconds West a distance of 680.62 feet to a concrete monument located on the west line of road known as Old Dixie Highway; Thence South 88 degrees 56 minutes 15 seconds West along the south line of Government Lot One, Section 30, Township 5 South, Range 29 East, for a distance of 33.88 feet to a concrete monument located along the east line of road known as Old Dixie Highway; Thence North 28 degrees 45 minutes 32 seconds West, along the west line of road known as Old Dixie Highway, for a distance of 25.48 feet to a point on the south line of Pine Island Road; Thence southeasterly along the south line of Pine Island Road through a curve to the right having a central angle of 15 degrees 77 minutes 44 seconds, a radius of 245.00 feet, a chord bearing of South 70 degrees 49 minutes 20 seconds East, for a chord distance of 65.21 feet; Thence North 88 degrees 56 minutes 15 seconds East, along the south line of Government Lot One, Section 30, Township 5 South, Range 29 East, for a distance of 121.86 feet to a point on the north line of Pine Island Road; Thence North 61 degrees 30 minutes 34 seconds West, along the north line of Pine Island Road, for a distance of 98.88 feet to a point of curvature; Thence northwesterly along the north line of Pine Island Road through a curve to the left having a

central angle of 20 degrees 20 minutes 28 seconds, a radius of 305.00 feet, a chord bearing of North 71 degrees 40 minutes 47 seconds West, for a chord distance of 107.71 feet to a point of reverse curvature; Thence northwesterly along the north line of Pine Island Road through a curve to the right having a central angle of 50 degrees 10 minutes 09 seconds, a radius of 100.00 feet, a chord bearing of North 56 degrees 45 minutes 58 seconds West, for a chord distance of 84.79 feet to a point on the east line of road known as Old Dixie Highway; Thence North 31 degrees 40 minutes 53 seconds West, along the east line of road known as Old Dixie Highway, for a distance of 310.85 feet; Thence North 33 degrees 12 minutes 30 seconds West, along the east line of road known as Old Dixie Highway, for a distance of 200.29 feet; Thence North 33 degrees 46 minutes 53 seconds West, along the east line of road known as Old Dixie Highway, for a distance of 400.00 feet; Thence North 33 degrees 12 minutes 30 seconds West, along the east line of road known as Old Dixie Highway, for a distance of 274.44 feet to an iron pipe and a point of curvature; Thence northwesterly along the east line of road known as Old Dixie Highway through a curve to the right having a central angle of 7 degrees 51 minutes 03 seconds, a radius of 1719.21 feet, a chord bearing of North 29 degrees 16 minutes 59 seconds West, for a chord distance of 235.38 feet to a concrete monument located along the north line of Section 30, Township 5 South, Range 29 East; Thence North 88 degrees 50 minutes 30 seconds East, along the north line of Section 30, for a distance of 1415.62 feet to a concrete monument and the northeast corner of Section 30, Township 5 South, Range 29 East; Thence North 89 degrees 10 minutes 44 seconds East, along the north line of Section 29, for a distance of 5291.00 feet to a concrete monument and the northeast corner of Section 29; Thence continue North 89 degrees 10 minutes 44 seconds East, along the north line of Section 28, for a distance of 1717.90 feet to a concrete monument and the northeast corner of Section 28; Thence South 19 degrees 56 minutes 07 seconds East, along the east line of Section 28, for a distance of 5113.68 feet to a concrete monument and the southwest corner of Section 61; Thence South 14 degrees 15 minutes 27 seconds West, along the southeast line of Section 28 for a distance of 541.01 feet to a concrete monument and the southeast corner of Section 28; Thence continue South 14 degrees 15 minutes 27 seconds West along the east line of Section 33 for a distance of 2899.46 feet to a concrete monument; Thence South 32 degrees 53 minutes 05 seconds East, along the east line of Section 33, for a distance of 797.03 feet to a concrete monument on the northwest line of Shannon Road; Thence southwest along the northwest line of Shannon Road through a curve to the left having a radius of 730.00 feet, a chord bearing of North 42 degrees 40 minutes 52 seconds East, for a chord distance of 95.28 feet to a concrete monument; Thence South 38 degrees 56 minutes 21 seconds West, along the northwest line of Shannon Road, for a distance of 2263.35 feet to a concrete monument located on the south line of Section 33, Township 5 South, Range 29

East; Thence continue South 38 degrees 56 minutes 21 seconds West, along the northwest line of Shannon Road, for a distance of 829.51 feet to a point on the northeast right-of-way line of U.S. Highway No. One (a 150 foot right-of-way as now established); Thence North 37 degrees 52 minutes 29 seconds West, along the northeast right-of-way line of U.S. Highway No. One ( a 150 foot right-of-way as now established), for a distance of 859.75 feet to a concrete monument located along the north line of Section 4, Township 6 South, Range 29 East, and the Point of Beginning.



SEE 4C/M

Scale: 1 inch = 40 feet  
 Date: 4/16/55  
 Prepared by: J. A. ...

SUBDIVISIONS

- G R A N T S
- 40, 41 Arvids Bar
  - 42 Pedro Gonzalez
  - 43 Juan Gonzalez
  - 44 Juan Gonzalez
  - 45 Juan Gonzalez
  - 46, 47, 48 Juan Gonzalez
  - 49 Juan Gonzalez
  - 50 Juan Gonzalez
  - 51 A. ...
  - 52 Pedro Gonzalez
  - 53, 54 Teresa Marshall
  - 55 Marshall & C. R. ...
  - 56 Marshall & ...
  - 57 Marshall & ...
  - 58 Marshall & ...
  - 60 Marshall & ...
  - 61 Roger ...

SEE 4D/M

ST. JOHNS COUNTY, FLORIDA  
 OFFICE OF COUNTY ENGINEER

SECTION	TRIMLINE	DATE	SCALE
19-36	55	29N	40
40-61			