

RESOLUTION NO. 96-107  
RESOLUTION OF THE BOARD OF COUNTY  
COMMISSIONERS OF ST. JOHNS COUNTY, FLORIDA  
APPROVING A SUBDIVISION PLAT FOR  
SEAGATE, PHASE III, UNIT 2 REPLAT OF LOT 26

WHEREAS, Giorgio F. Giorgini and wife, Maria E. Giorgini, as Owner, has applied to the Board of County Commissioners of St. Johns County, Florida, for approval to record a subdivision plat know as Seagate, Phase III, Unit 2 Replat of Lot 26.

NOW, THEREFORE BE IT RESOLVED BY THE BOARD OF COUNTY COMMISSIONERS OF ST. JOHNS COUNTY, FLORIDA, as follows:

Section 1. The above-described subdivision plat and its dedicated areas depicted thereon are conditionally approved and accepted by the Board of County Commissioners of St. Johns County, Florida subject to Sections 2, 4, and 5.

Section 2. The Construction Bond is not required.

Section 3. A Warranty Bond is not required.

Section 4. The approval and acceptance described in Section 1 shall not take effect until the Clerk has received a title opinion, certificate, or policy pertaining to the real property that is the subject of the aforementioned subdivision plat which opinion, certificate or policy is in a form acceptable to the County Attorney or Assistant County Attorney.

Section 5. The approval and acceptance described in Section 1 shall not take effect until the plat has been signed by each of the following departments, person or offices:

- a) Chairman or Vice-Chairman of the Board of County Commissioners of St. Johns County, Florida;
- b) Office of the County Attorney;

- c) County Planning and Zoning Department; and
- d) Clerk of Courts.

The Clerk shall not sign or accept the Plat for recording until it has been signed by each of the above persons or entities described in a) through c) above. If the plat is not signed and accepted by the Clerk for recording within 14 days from the date hereof, then the above-described conditional approval shall automatically terminate. If the plat is signed by the Clerk on or before such time, the conditions described herein shall be deemed to have been met.

ADOPTED by the Board of County Commissioners of St. Johns County, Florida, this

25 day of June, 1996.

BOARD OF COUNTY COMMISSIONERS  
OF ST. JOHNS COUNTY, FLORIDA

BY: *Donald G. Jordan*  
Its Chair

ATTEST: Carl "Bud" Markel

*Genea Pacetti*

Deputy Clerk

GRAPHIC SCALE  
(IN FEET)

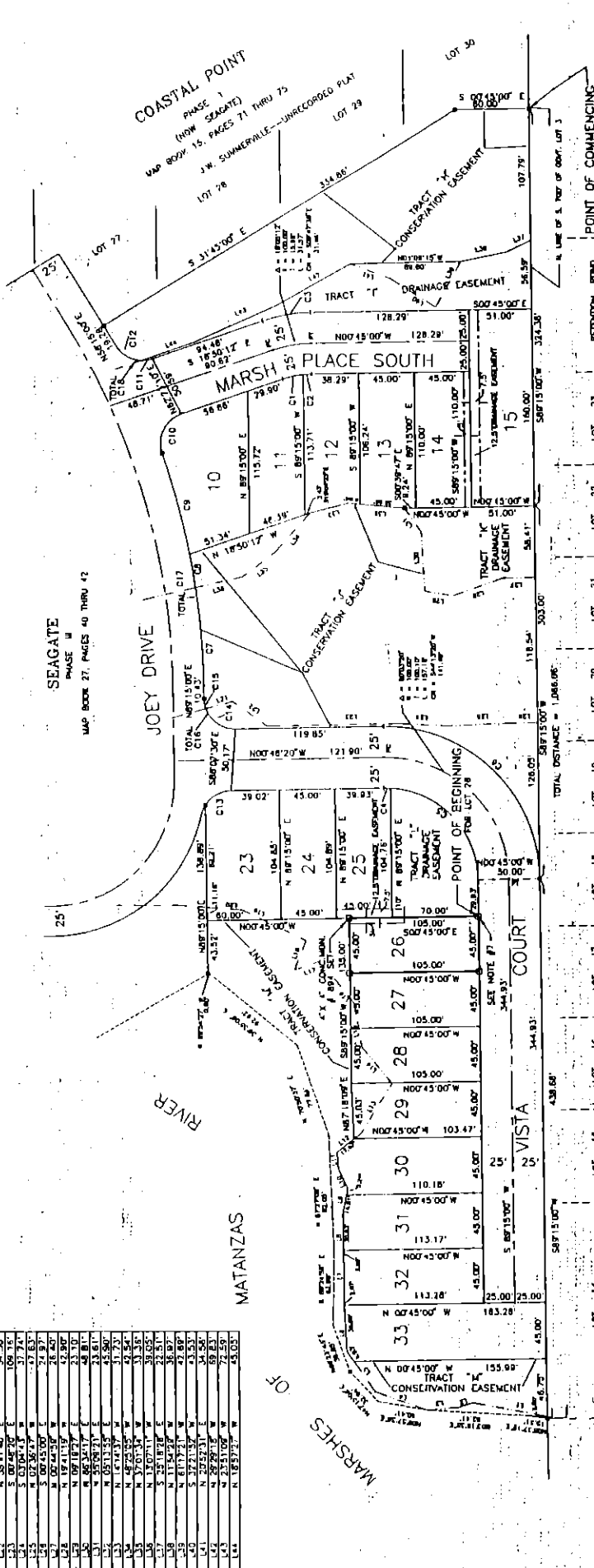


CURVE TABLE

CURVE	CHORD	LENGTH	CHORD	BEARING	AREA
C1	17.00	18.97	18.97	N 17° 21' 37" E	123.71
C2	17.00	6.72	6.72	S 89° 27' 15" E	20.17
C3	32.00	34.88	34.88	N 01° 08' 01" E	33.57
C4	32.00	1.28	1.28	N 46° 08' 41" E	81.10
C5	75.00	186.47	174.85	N 44° 13' 20" E	5670.29
C6	60.00	65.72	65.72	N 02° 33' 35" E	17.87
C7	80.00	83.06	83.06	N 74° 48' 31" E	6870.73
C8	25.00	3.95	3.95	S 64° 02' 31" E	90.24
C9	25.00	9.36	9.36	S 07° 05' 08" E	11.48
C10	25.00	23.26	23.26	S 30° 23' 38" E	55.38
C11	25.00	31.07	31.07	N 34° 48' 01" E	104.89
C12	25.00	38.88	38.88	N 11° 15' 23" E	71.15
C13	25.00	46.69	46.69	N 77° 49' 48" E	18.50
C14	25.00	54.50	54.50	N 44° 13' 20" E	5670.29
C15	25.00	62.31	62.31	N 11° 15' 23" E	71.15
C16	25.00	70.12	70.12	N 77° 49' 48" E	18.50
C17	25.00	77.93	77.93	N 44° 13' 20" E	5670.29
C18	25.00	85.74	85.74	N 11° 15' 23" E	71.15
C19	25.00	93.55	93.55	N 77° 49' 48" E	18.50
C20	25.00	101.36	101.36	N 44° 13' 20" E	5670.29
C21	25.00	109.17	109.17	N 11° 15' 23" E	71.15
C22	25.00	116.98	116.98	N 77° 49' 48" E	18.50
C23	25.00	124.79	124.79	N 44° 13' 20" E	5670.29
C24	25.00	132.60	132.60	N 11° 15' 23" E	71.15
C25	25.00	140.41	140.41	N 77° 49' 48" E	18.50
C26	25.00	148.22	148.22	N 44° 13' 20" E	5670.29
C27	25.00	156.03	156.03	N 11° 15' 23" E	71.15
C28	25.00	163.84	163.84	N 77° 49' 48" E	18.50
C29	25.00	171.65	171.65	N 44° 13' 20" E	5670.29
C30	25.00	179.46	179.46	N 11° 15' 23" E	71.15
C31	25.00	187.27	187.27	N 77° 49' 48" E	18.50
C32	25.00	195.08	195.08	N 44° 13' 20" E	5670.29
C33	25.00	202.89	202.89	N 11° 15' 23" E	71.15
C34	25.00	210.70	210.70	N 77° 49' 48" E	18.50
C35	25.00	218.51	218.51	N 44° 13' 20" E	5670.29
C36	25.00	226.32	226.32	N 11° 15' 23" E	71.15
C37	25.00	234.13	234.13	N 77° 49' 48" E	18.50
C38	25.00	241.94	241.94	N 44° 13' 20" E	5670.29
C39	25.00	249.75	249.75	N 11° 15' 23" E	71.15
C40	25.00	257.56	257.56	N 77° 49' 48" E	18.50
C41	25.00	265.37	265.37	N 44° 13' 20" E	5670.29
C42	25.00	273.18	273.18	N 11° 15' 23" E	71.15
C43	25.00	280.99	280.99	N 77° 49' 48" E	18.50
C44	25.00	288.80	288.80	N 44° 13' 20" E	5670.29
C45	25.00	296.61	296.61	N 11° 15' 23" E	71.15
C46	25.00	304.42	304.42	N 77° 49' 48" E	18.50
C47	25.00	312.23	312.23	N 44° 13' 20" E	5670.29
C48	25.00	320.04	320.04	N 11° 15' 23" E	71.15
C49	25.00	327.85	327.85	N 77° 49' 48" E	18.50
C50	25.00	335.66	335.66	N 44° 13' 20" E	5670.29

LINE TABLE

LINE	DIRECTION	DISTANCE
L1	N 07° 57' 59" E	61.88
L2	N 18° 13' 10" E	11.70
L3	S 07° 33' 31" E	33.27
L4	S 23° 52' 15" E	33.27
L5	S 52° 20' 53" E	40.08
L6	N 88° 31' 48" E	39.77
L7	S 87° 58' 29" W	38.84
L8	S 89° 00' 27" W	38.84
L9	S 64° 39' 46" W	18.42
L10	S 84° 31' 18" W	18.42
L11	N 37° 44' 51" W	74.63
L12	N 56° 05' 44" W	37.80
L13	N 80° 08' 11" W	37.80
L14	N 80° 08' 11" W	35.68
L15	N 52° 06' 17" E	44.66
L16	S 19° 27' 45" E	22.32
L17	S 68° 38' 50" W	22.32
L18	S 05° 13' 19" W	28.87
L19	S 15° 20' 43" E	22.34
L20	S 38° 11' 40" E	37.50
L21	S 07° 42' 30" E	109.15
L22	S 07° 42' 30" E	109.15
L23	S 07° 42' 30" E	109.15
L24	S 07° 42' 30" E	109.15
L25	S 07° 42' 30" E	109.15
L26	S 07° 42' 30" E	109.15
L27	S 07° 42' 30" E	109.15
L28	S 07° 42' 30" E	109.15
L29	S 07° 42' 30" E	109.15
L30	S 07° 42' 30" E	109.15
L31	S 07° 42' 30" E	109.15
L32	S 07° 42' 30" E	109.15
L33	S 07° 42' 30" E	109.15
L34	S 07° 42' 30" E	109.15
L35	S 07° 42' 30" E	109.15
L36	S 07° 42' 30" E	109.15
L37	S 07° 42' 30" E	109.15
L38	S 07° 42' 30" E	109.15
L39	S 07° 42' 30" E	109.15
L40	S 07° 42' 30" E	109.15
L41	S 07° 42' 30" E	109.15
L42	S 07° 42' 30" E	109.15
L43	S 07° 42' 30" E	109.15
L44	S 07° 42' 30" E	109.15
L45	S 07° 42' 30" E	109.15
L46	S 07° 42' 30" E	109.15
L47	S 07° 42' 30" E	109.15
L48	S 07° 42' 30" E	109.15
L49	S 07° 42' 30" E	109.15
L50	S 07° 42' 30" E	109.15



NOTES

1. BEARINGS BASED ON U.S. GOVERNMENT LAND SURVEY BY A.W. BROWN, NORTH LINE OF SOUTH 700 FEET OF GOVERNMENT LOT 3 - S 87° 15' 00" W.
2. FUTURE SANITARY SEWER, WATER SYSTEM AND CABLE TELEVISION SERVICE MAY BE PLACED WITHIN THE DEDICATED RIGHTS OF WAY OF THE BOULEVARD, WAY, LANE AND DRIVE OF THIS SUBDIVISION.
3. FLOOD HAZARD ZONE 'A-7' E.L. 8.0, COMMUNITY PANEL NO. 125147-0228-E, 7.15' 9.2.
4. CORNER LOTS AND LOTS HAVING FRONTAGE ON MORE THAN ONE RIGHT OF WAY MAY GAIN ACCESS FROM ONLY ONE RIGHT OF WAY.
5. CURRENT LAW PROVIDES THAT NO CONSTRUCTION, FILLING, REMOVAL OF TREES OR CUTTING OF TREES OR CURBING OF EARTH, OR PLACING MATERIALS OF THE JURISDICTIONAL WETLAND LINE AS DEPICTED ON THIS PLAT WITHOUT THE WRITTEN APPROVAL OF ST. JOHNS COUNTY AND OTHER REGULATORY AGENCIES WITH JURISDICTION OVER SUCH WETLANDS. IT IS THE RESPONSIBILITY OF THE LOT OWNER, HIS AGENT AND THE ENTITY PERFORMING ANY ACTIVITY WITHIN THE WETLAND AREA TO ACQUIRE THE NECESSARY WRITTEN APPROVALS PRIOR TO THE BEGINNING OF ANY WORK. THIS WETLAND JURISDICTIONAL LINE AND THE 12' BUFFER ZONE ARE SUBJECT TO CHANGE AND MAY BE SUPERSEDED AND REDEFINED FROM TIME TO TIME BY THE APPROPRIATE GOVERNMENT AGENCIES.
6. WETLAND JURISDICTION: U.S. CORPS OF ENGINEERS & ST. JOHNS RIVER WATER MANAGEMENT DISTRICT.
7. FIRE HYDRANT AT LOT CORNER: 4" X 4" CONC. MON. #894 WITNESS MON. SET N 45° 25' 00" W - 4.24' FROM THE CORNER.

LEGEND

- - PERMANENT REFERENCE MONUMENT #894 FOUND UNLESS NOTED
- - PERMANENT CONTROL POINT
- CE - CURVE DESIGNATION
- (R) - RADIAL LINE
- S/W - RIGHT OF WAY
- L/S - L&L DESIGNATION
- PI - POINT OF INTERSECTION
- PC - POINT OF CURVE
- P.T. - POINT OF TANGENCY
- P.L. - FLORIDA POWER AND LIGHT COMPANY
- CONC. - CONCRETE
- MON. - MONUMENT

\*NOTICE: THERE MAY BE ADDITIONAL RESTRICTIONS THAT ARE NOT RECORDED ON THIS PLAT THAT MAY BE FOUND IN THE PUBLIC RECORDS OF THIS COUNTY

# SEAGATE, PHASE III, UNIT 2

## REPLAT OF LOT 26

PART OF GOVERNMENT LOT 3  
SECTION 15, TOWNSHIP 8 SOUTH, RANGE 30 EAST,  
ST. JOHNS COUNTY, FLORIDA

REMAPLED BY:  
DIMS & PELLISSIER, P.C.  
1000 N. UNIVERSITY BLVD., SUITE 100  
ST. AUGUSTINE, FL 32080