

RESOLUTION NO. 96- 172  
RESOLUTION OF THE BOARD OF COUNTY  
COMMISSIONERS OF ST. JOHNS COUNTY, FLORIDA  
APPROVING A SUBDIVISION PLAT  
SAWMILL LAKES UNIT ONE PHASE I

WHEREAS, Arvida-Sawmill Lakes Partners, L.P., a Delaware Limited Partnership, D/B/A Arvida-Sawmill Lakes Partners, Ltd., as Owner, has applied to the Board of County Commissioners of St. Johns County, Florida, for approval to record a subdivision plat know as Sawmill Lakes Unit One Phase I.

NOW, THEREFORE BE IT RESOLVED BY THE BOARD OF COUNTY COMMISSIONERS OF ST. JOHNS COUNTY, FLORIDA, as follows:

Section 1. The above-described subdivision plat and its dedicated areas depicted thereon are conditionally approved and accepted by the Board of County Commissioners of St. Johns County, Florida subject to Sections 2, 4, and 5.

Section 2. The Construction Bond is set in the amount of \$ 1,436,734.50 and shall be delivered to the Clerk of Courts and approved by him prior to recording the plat.

Section 3. A Warranty Bond is not required.

Section 4. The approval and acceptance described in Section 1 shall not take effect until the Clerk has received a title opinion, certificate, or policy pertaining to the real property that is the subject of the aforementioned subdivision plat which opinion, certificate or policy is in a form acceptable to the County Attorney or Assistant County Attorney.

Section 5. The approval and acceptance described in Section 1 shall not take effect until the plat has been signed by each of the following departments, person or offices:

- a) Chairman or Vice-Chairman of the Board of County Commissioners of St. Johns County, Florida;
- b) Office of the County Attorney;
- c) County Planning and Zoning Department; and
- d) Clerk of Courts.

The Clerk shall not sign or accept the Plat for recording until it has been signed by each of the above persons or entities described in a) through c) above. If the plat is not signed and accepted by the Clerk for recording within 14 days from the date hereof, then the above-described conditional approval shall automatically terminate. If the plat is signed by the Clerk on or before such time, the conditions described herein shall be deemed to have been met.

ADOPTED by the Board of County Commissioners of St. Johns County, Florida, this  
8th day of October, 19 96.

BOARD OF COUNTY COMMISSIONERS  
OF ST. JOHNS COUNTY, FLORIDA

BY: Ronald Jordan  
Its Chair Donald Jordan

ATTEST: Carl "Bud" Markel

Genora J. Newsome  
Deputy Clerk



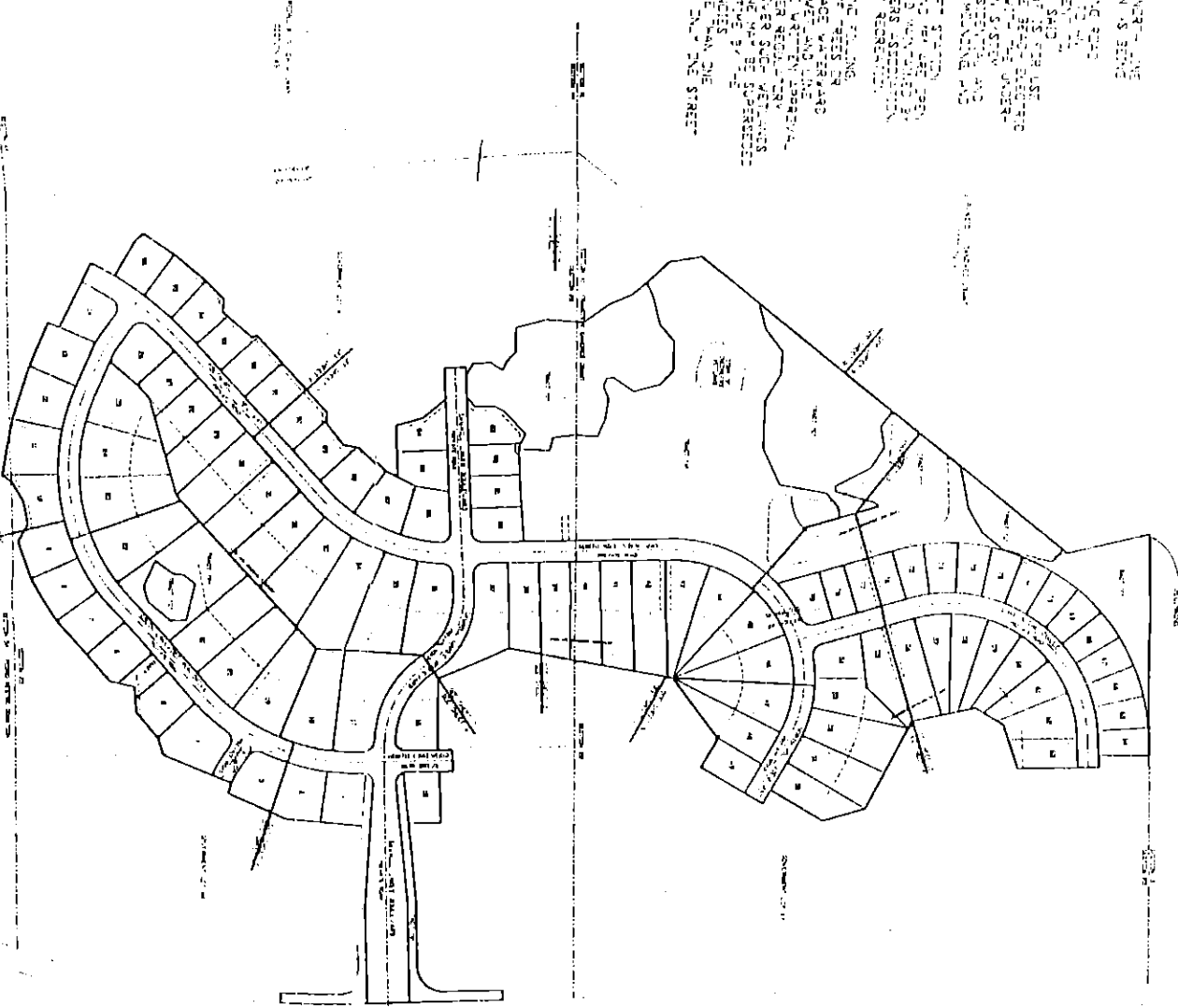
# SAWMILL LAKES UNIT ONE, PHASE I

A PART OF GOVERNMENT LOT 2, 3 AND 4, SECTION 22, TOGETHER WITH A PART OF THE FRANCIS W. SANCHEZ GRANT, SECTION 40, TOGETHER WITH A PART OF THE PEARO MESTRE DOMINION, SECTION 54 ALL IN TOWNSHIP 2 SOUTH, RANGE 29 EAST, ST. JAMES COUNTY, FLORIDA.

MAP BOOK PAGE

SHEET 3 OF 10 SHEETS

- 1) BEARING AND DISTANCE TO THE NEAREST CORNER OF SECTION 22, TOWNSHIP 2 SOUTH, RANGE 29 EAST, ST. JAMES COUNTY, FLORIDA.
- 2) BEARING AND DISTANCE TO THE NEAREST CORNER OF SECTION 40, TOWNSHIP 2 SOUTH, RANGE 29 EAST, ST. JAMES COUNTY, FLORIDA.
- 3) BEARING AND DISTANCE TO THE NEAREST CORNER OF SECTION 54, TOWNSHIP 2 SOUTH, RANGE 29 EAST, ST. JAMES COUNTY, FLORIDA.
- 4) BEARING AND DISTANCE TO THE NEAREST CORNER OF SECTION 22, TOWNSHIP 2 SOUTH, RANGE 29 EAST, ST. JAMES COUNTY, FLORIDA.
- 5) BEARING AND DISTANCE TO THE NEAREST CORNER OF SECTION 40, TOWNSHIP 2 SOUTH, RANGE 29 EAST, ST. JAMES COUNTY, FLORIDA.
- 6) BEARING AND DISTANCE TO THE NEAREST CORNER OF SECTION 54, TOWNSHIP 2 SOUTH, RANGE 29 EAST, ST. JAMES COUNTY, FLORIDA.
- 7) BEARING AND DISTANCE TO THE NEAREST CORNER OF SECTION 22, TOWNSHIP 2 SOUTH, RANGE 29 EAST, ST. JAMES COUNTY, FLORIDA.
- 8) BEARING AND DISTANCE TO THE NEAREST CORNER OF SECTION 40, TOWNSHIP 2 SOUTH, RANGE 29 EAST, ST. JAMES COUNTY, FLORIDA.
- 9) BEARING AND DISTANCE TO THE NEAREST CORNER OF SECTION 54, TOWNSHIP 2 SOUTH, RANGE 29 EAST, ST. JAMES COUNTY, FLORIDA.
- 10) BEARING AND DISTANCE TO THE NEAREST CORNER OF SECTION 22, TOWNSHIP 2 SOUTH, RANGE 29 EAST, ST. JAMES COUNTY, FLORIDA.
- 11) BEARING AND DISTANCE TO THE NEAREST CORNER OF SECTION 40, TOWNSHIP 2 SOUTH, RANGE 29 EAST, ST. JAMES COUNTY, FLORIDA.
- 12) BEARING AND DISTANCE TO THE NEAREST CORNER OF SECTION 54, TOWNSHIP 2 SOUTH, RANGE 29 EAST, ST. JAMES COUNTY, FLORIDA.



SEE ATTACHED PLANS FOR THE FOLLOWING:

- 1. ENGINEERING REFERENCE NUMBER (ERN)
- 2. ENGINEERING REFERENCE NUMBER (ERN)
- 3. ENGINEERING REFERENCE NUMBER (ERN)
- 4. ENGINEERING REFERENCE NUMBER (ERN)
- 5. ENGINEERING REFERENCE NUMBER (ERN)
- 6. ENGINEERING REFERENCE NUMBER (ERN)
- 7. ENGINEERING REFERENCE NUMBER (ERN)
- 8. ENGINEERING REFERENCE NUMBER (ERN)
- 9. ENGINEERING REFERENCE NUMBER (ERN)
- 10. ENGINEERING REFERENCE NUMBER (ERN)
- 11. ENGINEERING REFERENCE NUMBER (ERN)
- 12. ENGINEERING REFERENCE NUMBER (ERN)

SEE ATTACHED PLANS FOR THE FOLLOWING:

1. ENGINEERING REFERENCE NUMBER (ERN)

2. ENGINEERING REFERENCE NUMBER (ERN)

3. ENGINEERING REFERENCE NUMBER (ERN)

4. ENGINEERING REFERENCE NUMBER (ERN)

5. ENGINEERING REFERENCE NUMBER (ERN)

6. ENGINEERING REFERENCE NUMBER (ERN)

7. ENGINEERING REFERENCE NUMBER (ERN)

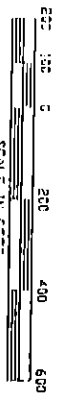
8. ENGINEERING REFERENCE NUMBER (ERN)

9. ENGINEERING REFERENCE NUMBER (ERN)

10. ENGINEERING REFERENCE NUMBER (ERN)

11. ENGINEERING REFERENCE NUMBER (ERN)

12. ENGINEERING REFERENCE NUMBER (ERN)



SCALE IN FEET  
SCALE: 1" = 200'

AUG 01 1996

PRELIMINARY

\$

**HEZEMORE AND ASSOCIATES INC.**

SURVEYING & ENGINEERING  
1000 N. W. 10TH AVENUE  
SUITE 100  
MIAMI, FLORIDA 33136  
TEL: 305-575-1111  
FAX: 305-575-1112