

RESOLUTION NO. 96- 2
RESOLUTION OF THE BOARD OF COUNTY
COMMISSIONERS OF ST. JOHNS COUNTY, FLORIDA
APPROVING A SUBDIVISION PLAT FOR
HIGHLAND FOREST REPLAT

WHEREAS, Highland Forest Development, Inc., a Florida Corporation, and Bob Brite Homes, Inc., a Florida Corporation, as Owner, has applied to the Board of County Commissioners of St. Johns County, Florida, for approval to record a subdivision plat know as Highland Forest Replat.

NOW, THEREFORE BE IT RESOLVED BY THE BOARD OF COUNTY COMMISSIONERS OF ST. JOHNS COUNTY, FLORIDA, as follows:

Section 1. The above-described subdivision plat and its dedicated areas depicted thereon are conditionally approved and accepted by the Board of County Commissioners of St. Johns County, Florida subject to Sections 2, 4, and 5.

Section 2. The Construction Bond is not required.

Section 3. A Warranty Bond is not required.

Section 4. The approval and acceptance described in Section 1 shall not take effect until the Clerk has received a title opinion, certificate, or policy pertaining to the real property that is the subject of the aforementioned subdivision plat which opinion, certificate or policy is in a form acceptable to the County Attorney or Assistant County Attorney.

Section 5. The approval and acceptance described in Section 1 shall not take effect until the plat has been signed by each of the following departments, person or offices:

- a) Chairman or Vice-Chairman of the Board of County Commissioners of St. Johns County, Florida;

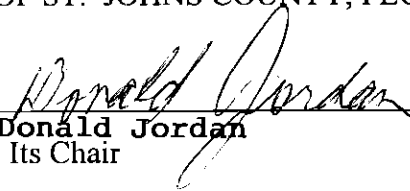
- b) Office of the County Attorney;
- c) County Planning and Zoning Department; and
- d) Clerk of Courts.

The Clerk shall not sign or accept the Plat for recording until it has been signed by each of the above persons or entities described in a) through c) above. If the plat is not signed and accepted by the Clerk for recording within 14 days from the date hereof, then the above-described conditional approval shall automatically terminate. If the plat is signed by the Clerk on or before such time, the conditions described herein shall be deemed to have been met.


ADOPTED by the Board of County Commissioners of St. Johns County, Florida, this
9th day of January, 1996

BOARD OF COUNTY COMMISSIONERS
OF ST. JOHNS COUNTY, FLORIDA

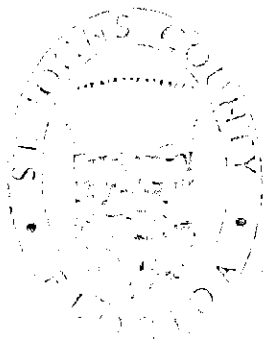
BY:


Donald Jordan
Its Chair

ATTEST: Carl "Bud" Markel

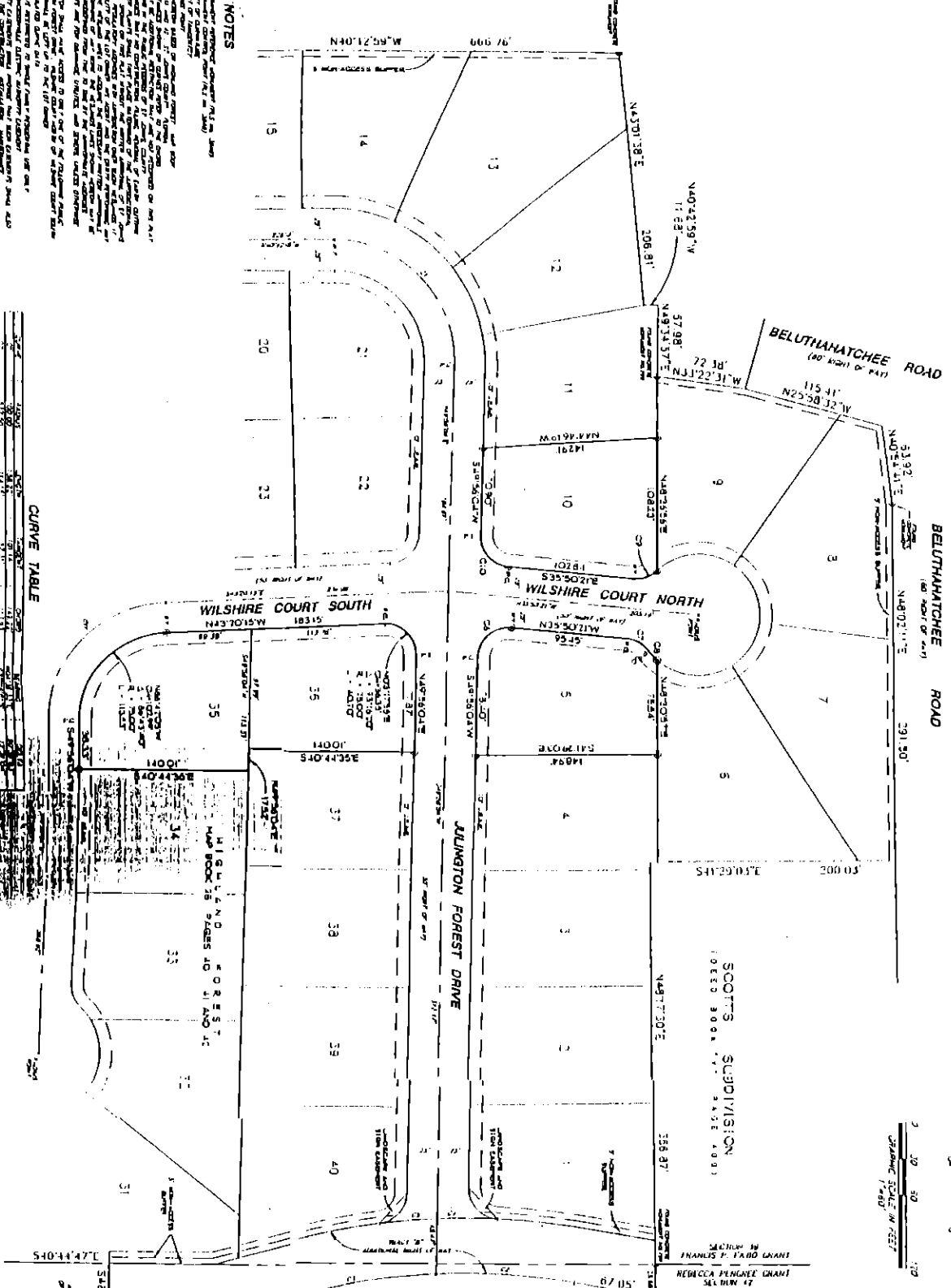

Patricia De Praxedis

Deputy Clerk



HIGHLAND FOREST REPLAT

SCOTT'S SUBDIVISION
 REEDED BOOK 25 PAGE 4001



CURVE TABLE

STATION	CHORD BEARING	CHORD DISTANCE	CHORD CURVE DISTANCE	CHORD CURVE DISTANCE	CHORD CURVE DISTANCE	CHORD CURVE DISTANCE	CHORD CURVE DISTANCE	CHORD CURVE DISTANCE
1	N 40° 21' 38" E	106.81	106.81	106.81	106.81	106.81	106.81	106.81
2	N 40° 21' 38" E	106.81	106.81	106.81	106.81	106.81	106.81	106.81
3	N 40° 21' 38" E	106.81	106.81	106.81	106.81	106.81	106.81	106.81
4	N 40° 21' 38" E	106.81	106.81	106.81	106.81	106.81	106.81	106.81
5	N 40° 21' 38" E	106.81	106.81	106.81	106.81	106.81	106.81	106.81
6	N 40° 21' 38" E	106.81	106.81	106.81	106.81	106.81	106.81	106.81
7	N 40° 21' 38" E	106.81	106.81	106.81	106.81	106.81	106.81	106.81
8	N 40° 21' 38" E	106.81	106.81	106.81	106.81	106.81	106.81	106.81
9	N 40° 21' 38" E	106.81	106.81	106.81	106.81	106.81	106.81	106.81
10	N 40° 21' 38" E	106.81	106.81	106.81	106.81	106.81	106.81	106.81
11	N 40° 21' 38" E	106.81	106.81	106.81	106.81	106.81	106.81	106.81
12	N 40° 21' 38" E	106.81	106.81	106.81	106.81	106.81	106.81	106.81
13	N 40° 21' 38" E	106.81	106.81	106.81	106.81	106.81	106.81	106.81
14	N 40° 21' 38" E	106.81	106.81	106.81	106.81	106.81	106.81	106.81
15	N 40° 21' 38" E	106.81	106.81	106.81	106.81	106.81	106.81	106.81
16	N 40° 21' 38" E	106.81	106.81	106.81	106.81	106.81	106.81	106.81
17	N 40° 21' 38" E	106.81	106.81	106.81	106.81	106.81	106.81	106.81
18	N 40° 21' 38" E	106.81	106.81	106.81	106.81	106.81	106.81	106.81
19	N 40° 21' 38" E	106.81	106.81	106.81	106.81	106.81	106.81	106.81
20	N 40° 21' 38" E	106.81	106.81	106.81	106.81	106.81	106.81	106.81
21	N 40° 21' 38" E	106.81	106.81	106.81	106.81	106.81	106.81	106.81
22	N 40° 21' 38" E	106.81	106.81	106.81	106.81	106.81	106.81	106.81
23	N 40° 21' 38" E	106.81	106.81	106.81	106.81	106.81	106.81	106.81
24	N 40° 21' 38" E	106.81	106.81	106.81	106.81	106.81	106.81	106.81
25	N 40° 21' 38" E	106.81	106.81	106.81	106.81	106.81	106.81	106.81
26	N 40° 21' 38" E	106.81	106.81	106.81	106.81	106.81	106.81	106.81
27	N 40° 21' 38" E	106.81	106.81	106.81	106.81	106.81	106.81	106.81
28	N 40° 21' 38" E	106.81	106.81	106.81	106.81	106.81	106.81	106.81
29	N 40° 21' 38" E	106.81	106.81	106.81	106.81	106.81	106.81	106.81
30	N 40° 21' 38" E	106.81	106.81	106.81	106.81	106.81	106.81	106.81
31	N 40° 21' 38" E	106.81	106.81	106.81	106.81	106.81	106.81	106.81
32	N 40° 21' 38" E	106.81	106.81	106.81	106.81	106.81	106.81	106.81
33	N 40° 21' 38" E	106.81	106.81	106.81	106.81	106.81	106.81	106.81
34	N 40° 21' 38" E	106.81	106.81	106.81	106.81	106.81	106.81	106.81
35	N 40° 21' 38" E	106.81	106.81	106.81	106.81	106.81	106.81	106.81
36	N 40° 21' 38" E	106.81	106.81	106.81	106.81	106.81	106.81	106.81
37	N 40° 21' 38" E	106.81	106.81	106.81	106.81	106.81	106.81	106.81
38	N 40° 21' 38" E	106.81	106.81	106.81	106.81	106.81	106.81	106.81
39	N 40° 21' 38" E	106.81	106.81	106.81	106.81	106.81	106.81	106.81
40	N 40° 21' 38" E	106.81	106.81	106.81	106.81	106.81	106.81	106.81

GENERAL NOTES

1. & BEARING AND DISTANCE TO CORNER OF LOT 10.
2. & BEARING AND DISTANCE TO CORNER OF LOT 11.
3. & BEARING AND DISTANCE TO CORNER OF LOT 12.
4. & BEARING AND DISTANCE TO CORNER OF LOT 13.
5. & BEARING AND DISTANCE TO CORNER OF LOT 14.
6. & BEARING AND DISTANCE TO CORNER OF LOT 15.
7. & BEARING AND DISTANCE TO CORNER OF LOT 16.
8. & BEARING AND DISTANCE TO CORNER OF LOT 17.
9. & BEARING AND DISTANCE TO CORNER OF LOT 18.
10. & BEARING AND DISTANCE TO CORNER OF LOT 19.
11. & BEARING AND DISTANCE TO CORNER OF LOT 20.
12. & BEARING AND DISTANCE TO CORNER OF LOT 21.
13. & BEARING AND DISTANCE TO CORNER OF LOT 22.
14. & BEARING AND DISTANCE TO CORNER OF LOT 23.
15. & BEARING AND DISTANCE TO CORNER OF LOT 24.
16. & BEARING AND DISTANCE TO CORNER OF LOT 25.
17. & BEARING AND DISTANCE TO CORNER OF LOT 26.
18. & BEARING AND DISTANCE TO CORNER OF LOT 27.
19. & BEARING AND DISTANCE TO CORNER OF LOT 28.
20. & BEARING AND DISTANCE TO CORNER OF LOT 29.
21. & BEARING AND DISTANCE TO CORNER OF LOT 30.
22. & BEARING AND DISTANCE TO CORNER OF LOT 31.
23. & BEARING AND DISTANCE TO CORNER OF LOT 32.
24. & BEARING AND DISTANCE TO CORNER OF LOT 33.
25. & BEARING AND DISTANCE TO CORNER OF LOT 34.
26. & BEARING AND DISTANCE TO CORNER OF LOT 35.
27. & BEARING AND DISTANCE TO CORNER OF LOT 36.
28. & BEARING AND DISTANCE TO CORNER OF LOT 37.
29. & BEARING AND DISTANCE TO CORNER OF LOT 38.
30. & BEARING AND DISTANCE TO CORNER OF LOT 39.
31. & BEARING AND DISTANCE TO CORNER OF LOT 40.
32. & BEARING AND DISTANCE TO CORNER OF LOT 41.
33. & BEARING AND DISTANCE TO CORNER OF LOT 42.
34. & BEARING AND DISTANCE TO CORNER OF LOT 43.
35. & BEARING AND DISTANCE TO CORNER OF LOT 44.
36. & BEARING AND DISTANCE TO CORNER OF LOT 45.
37. & BEARING AND DISTANCE TO CORNER OF LOT 46.
38. & BEARING AND DISTANCE TO CORNER OF LOT 47.
39. & BEARING AND DISTANCE TO CORNER OF LOT 48.
40. & BEARING AND DISTANCE TO CORNER OF LOT 49.
41. & BEARING AND DISTANCE TO CORNER OF LOT 50.
42. & BEARING AND DISTANCE TO CORNER OF LOT 51.
43. & BEARING AND DISTANCE TO CORNER OF LOT 52.
44. & BEARING AND DISTANCE TO CORNER OF LOT 53.
45. & BEARING AND DISTANCE TO CORNER OF LOT 54.
46. & BEARING AND DISTANCE TO CORNER OF LOT 55.
47. & BEARING AND DISTANCE TO CORNER OF LOT 56.
48. & BEARING AND DISTANCE TO CORNER OF LOT 57.
49. & BEARING AND DISTANCE TO CORNER OF LOT 58.
50. & BEARING AND DISTANCE TO CORNER OF LOT 59.
51. & BEARING AND DISTANCE TO CORNER OF LOT 60.
52. & BEARING AND DISTANCE TO CORNER OF LOT 61.
53. & BEARING AND DISTANCE TO CORNER OF LOT 62.
54. & BEARING AND DISTANCE TO CORNER OF LOT 63.
55. & BEARING AND DISTANCE TO CORNER OF LOT 64.
56. & BEARING AND DISTANCE TO CORNER OF LOT 65.
57. & BEARING AND DISTANCE TO CORNER OF LOT 66.
58. & BEARING AND DISTANCE TO CORNER OF LOT 67.
59. & BEARING AND DISTANCE TO CORNER OF LOT 68.
60. & BEARING AND DISTANCE TO CORNER OF LOT 69.
61. & BEARING AND DISTANCE TO CORNER OF LOT 70.
62. & BEARING AND DISTANCE TO CORNER OF LOT 71.
63. & BEARING AND DISTANCE TO CORNER OF LOT 72.
64. & BEARING AND DISTANCE TO CORNER OF LOT 73.
65. & BEARING AND DISTANCE TO CORNER OF LOT 74.
66. & BEARING AND DISTANCE TO CORNER OF LOT 75.
67. & BEARING AND DISTANCE TO CORNER OF LOT 76.
68. & BEARING AND DISTANCE TO CORNER OF LOT 77.
69. & BEARING AND DISTANCE TO CORNER OF LOT 78.
70. & BEARING AND DISTANCE TO CORNER OF LOT 79.
71. & BEARING AND DISTANCE TO CORNER OF LOT 80.
72. & BEARING AND DISTANCE TO CORNER OF LOT 81.
73. & BEARING AND DISTANCE TO CORNER OF LOT 82.
74. & BEARING AND DISTANCE TO CORNER OF LOT 83.
75. & BEARING AND DISTANCE TO CORNER OF LOT 84.
76. & BEARING AND DISTANCE TO CORNER OF LOT 85.
77. & BEARING AND DISTANCE TO CORNER OF LOT 86.
78. & BEARING AND DISTANCE TO CORNER OF LOT 87.
79. & BEARING AND DISTANCE TO CORNER OF LOT 88.
80. & BEARING AND DISTANCE TO CORNER OF LOT 89.
81. & BEARING AND DISTANCE TO CORNER OF LOT 90.
82. & BEARING AND DISTANCE TO CORNER OF LOT 91.
83. & BEARING AND DISTANCE TO CORNER OF LOT 92.
84. & BEARING AND DISTANCE TO CORNER OF LOT 93.
85. & BEARING AND DISTANCE TO CORNER OF LOT 94.
86. & BEARING AND DISTANCE TO CORNER OF LOT 95.
87. & BEARING AND DISTANCE TO CORNER OF LOT 96.
88. & BEARING AND DISTANCE TO CORNER OF LOT 97.
89. & BEARING AND DISTANCE TO CORNER OF LOT 98.
90. & BEARING AND DISTANCE TO CORNER OF LOT 99.
91. & BEARING AND DISTANCE TO CORNER OF LOT 100.

RECORDED IN PUBLIC RECORDS OF ST. JOHNS COUNTY, FLORIDA
 BOOK 25, PAGE 4001
 SECTION 18, TOWNSHIP 5 SOUTH, RANGE 27 EAST, 57
 JOHN COUNTY, FLORIDA