

RESOLUTION NO. 97- 113  
RESOLUTION OF THE BOARD OF COUNTY  
COMMISSIONERS OF ST. JOHNS COUNTY, FLORIDA  
APPROVING A SUBDIVISION PLAT FOR  
THE PARKES OF JULINGTON CREEK PLANTATION PHASE THREE

WHEREAS, Julington Creek Development Corporation, a Florida Corporation, as Owner, has applied to the Board of County Commissioners of St. Johns County, Florida, for approval to record a subdivision plat know as The Parkes of Julington Creek Plantation Phase Three.

NOW, THEREFORE BE IT RESOLVED BY THE BOARD OF COUNTY COMMISSIONERS OF ST. JOHNS COUNTY, FLORIDA, as follows:

Section 1. The above-described subdivision plat and its dedicated areas depicted thereon are conditionally approved and accepted by the Board of County Commissioners of St. Johns County, Florida subject to Sections 2, 4, and 5.

Section 2. The Construction Bond has been filed with the Clerk of Court in the amount of \$71,203.21.

Section 3. A Warranty Bond will be required in the amount of \$65,427.75.

Section 4. The approval and acceptance described in Section 1 shall not take effect until the Clerk has received a title opinion, certificate, or policy pertaining to the real property that is the subject of the aforementioned subdivision plat which opinion, certificate or policy is in a form acceptable to the County Attorney or Assistant County Attorney.

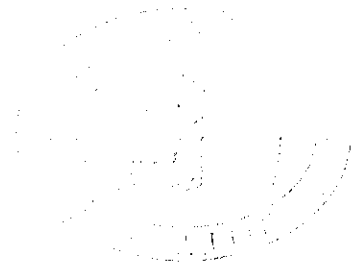
Section 5. The approval and acceptance described in Section 1 shall not take effect until the plat has been signed by each of the following departments, person or offices:

- a) Chairman or Vice-Chairman of the Board of County Commissioners of St. Johns County, Florida;

- b) Office of the County Attorney;
- c) County Planning and Zoning Department; and
- d) Clerk of Courts.

The Clerk shall not sign or accept the Plat for recording until it has been signed by each of the above persons or entities described in a) through c) above. If the plat is not signed and accepted by the Clerk for recording within 14 days from the date hereof, then the above-described conditional approval shall automatically terminate. If the plat is signed by the Clerk on or before such time, the conditions described herein shall be deemed to have been met.

ADOPTED by the Board of County Commissioners of St. Johns County, Florida, this  
12 day of August, 1997.



BOARD OF COUNTY COMMISSIONERS  
OF ST. JOHNS COUNTY, FLORIDA

BY: \_\_\_\_\_

Its Chair

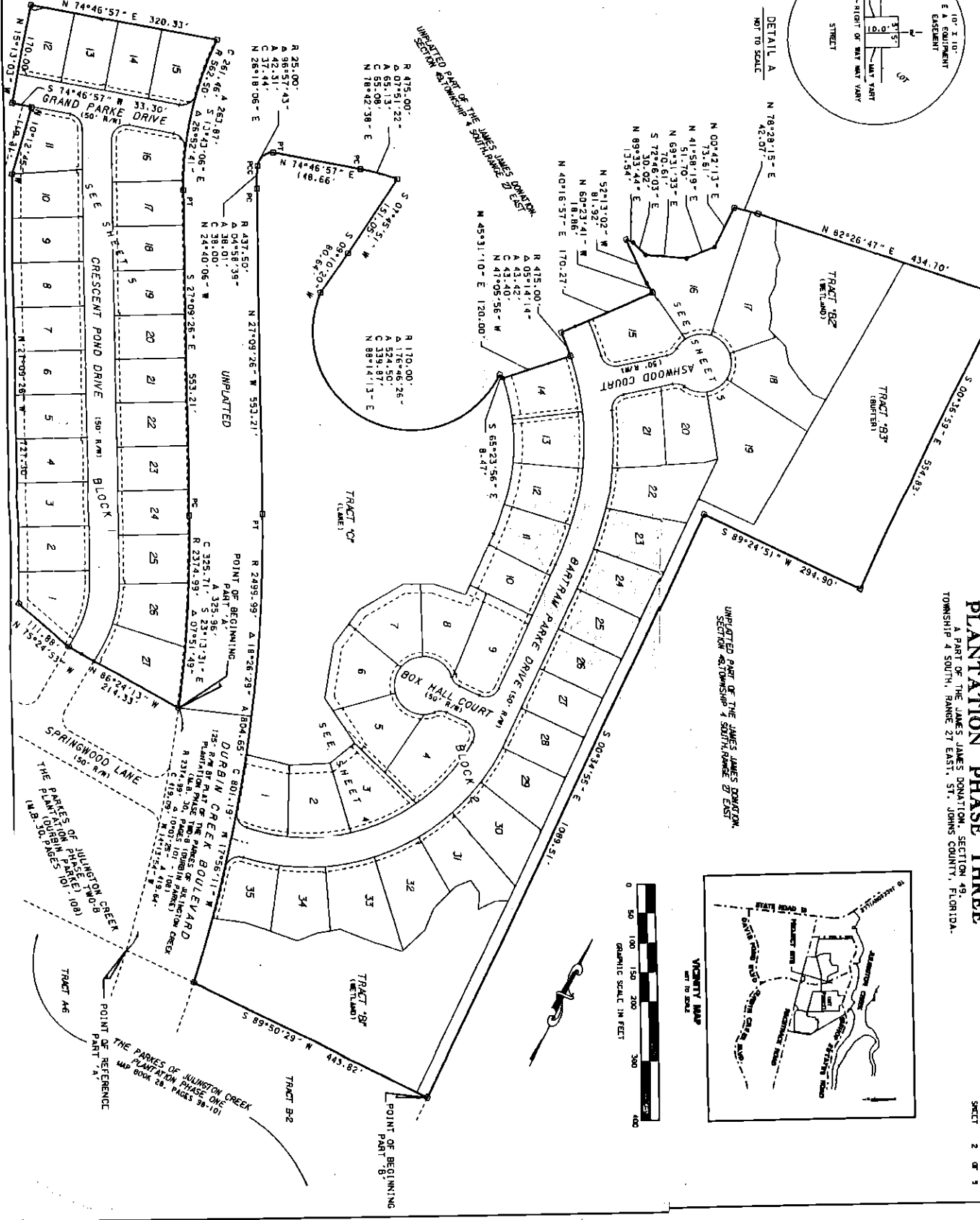
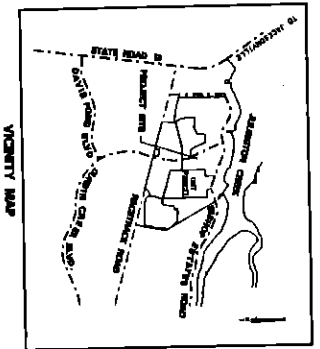
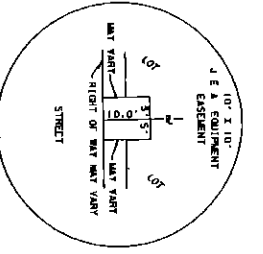
ATTEST: Cheryl Strickland

*Imma Bacchi*

Deputy Clerk

**THE PARKES OF JULINGTON CREEK  
PLANTATION PHASE THREE**

A PART OF THE JAMES JAMES DONATION, SECTION 49,  
TOWNSHIP 4 SOUTH, RANGE 27 EAST, ST. JOHNS COUNTY, FLORIDA.



DETAIL A  
NOT TO SCALE

UNPLATTED PART OF THE JAMES JAMES DONATION,  
SECTION 49, TOWNSHIP 4 SOUTH, RANGE 27 EAST

UNPLATTED PART OF THE JAMES JAMES DONATION,  
SECTION 49, TOWNSHIP 4 SOUTH, RANGE 27 EAST

UNPLATTED

POINT OF BEGINNING

THE PARKES OF JULINGTON CREEK  
PLANTATION PHASE ONE  
MAP BOOK 26, PAGES 38-40

THE PARKES OF JULINGTON CREEK  
PLANTATION PHASE ONE  
MAP BOOK 26, PAGES 108-109

POINT OF REFERENCE