

RESOLUTION NO 97-126

**A RESOLUTION OF THE ST JOHNS COUNTY,
FLORIDA, BOARD OF COUNTY COMMISSIONERS,
NAMING A STREET
SWEET MAGNOLIA COURT**

WHEREAS, an application has been duly made to the Board of County Commissioners to name **SWEET MAGNOLIA COURT**.

WHEREAS, the procedure outlined in resolution #92-65 has been followed by the petitioners; and

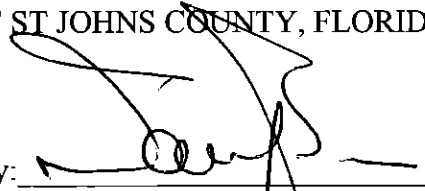
WHEREAS, it is found to be in the public interest to name this street as requested on furtherance of the public health, safety and welfare;

NOW THEREFORE BE IT RESOLVED AS FOLLOWS:

- 1. The petition to name **SWEET MAGNOLIA COURT** is hereby granted and shall hereafter be known by that name.
- 2. The E 9-1-1 Coordinator is instructed to take whatever steps are necessary to name the unnamed street and to notify the Property Appraiser's Office of the change.
- 3. The petitioner shall notify, in writing, all residents affected by this resolution.

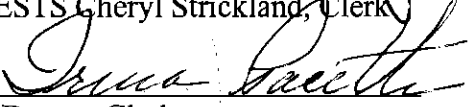
RESOLVED by the Board of County Commissioners of St. Johns County, Florida, this 26 day of August, 1997.

BOARD OF COUNTY COMMISSIONERS
OF ST JOHNS COUNTY, FLORIDA

By: 

Its Chair

ATTESTS Cheryl Strickland, Clerk

By: 

Deputy Clerk

*Dr + Let - BCC Secty
J. Pacetti
Rec - 1700
Sur - 250
- Bill Co -*

CEDAR RIDGE
PATIO & COURTYARD HOMES

January 8, 1997

Mr. Tim Wehking
St. Johns County E-911 Addressing
P.O. Drawer 349
St. Augustine, FL 32085-0349

RE: Cedar Ridge Subdivision, Tracts A,B,C,D

Dear Tim,

As we discussed in our phone conversation I would be in favor of naming the Courtyards of Cedar Ridge. This would make it easier in times of emergency for drivers to locate the address. I am sure homeowners living in these Courtyards would feel safer with this type of 911 address.

We have reserved the following names with your office in the event you agree with the naming of the Courtyard drives.

- Tract A - Cedar Bough Court
- Tract B - Sugar Pine Court
- Tract C - Sweet Magnolia Court
- Tract D - Sweet Laurel Court

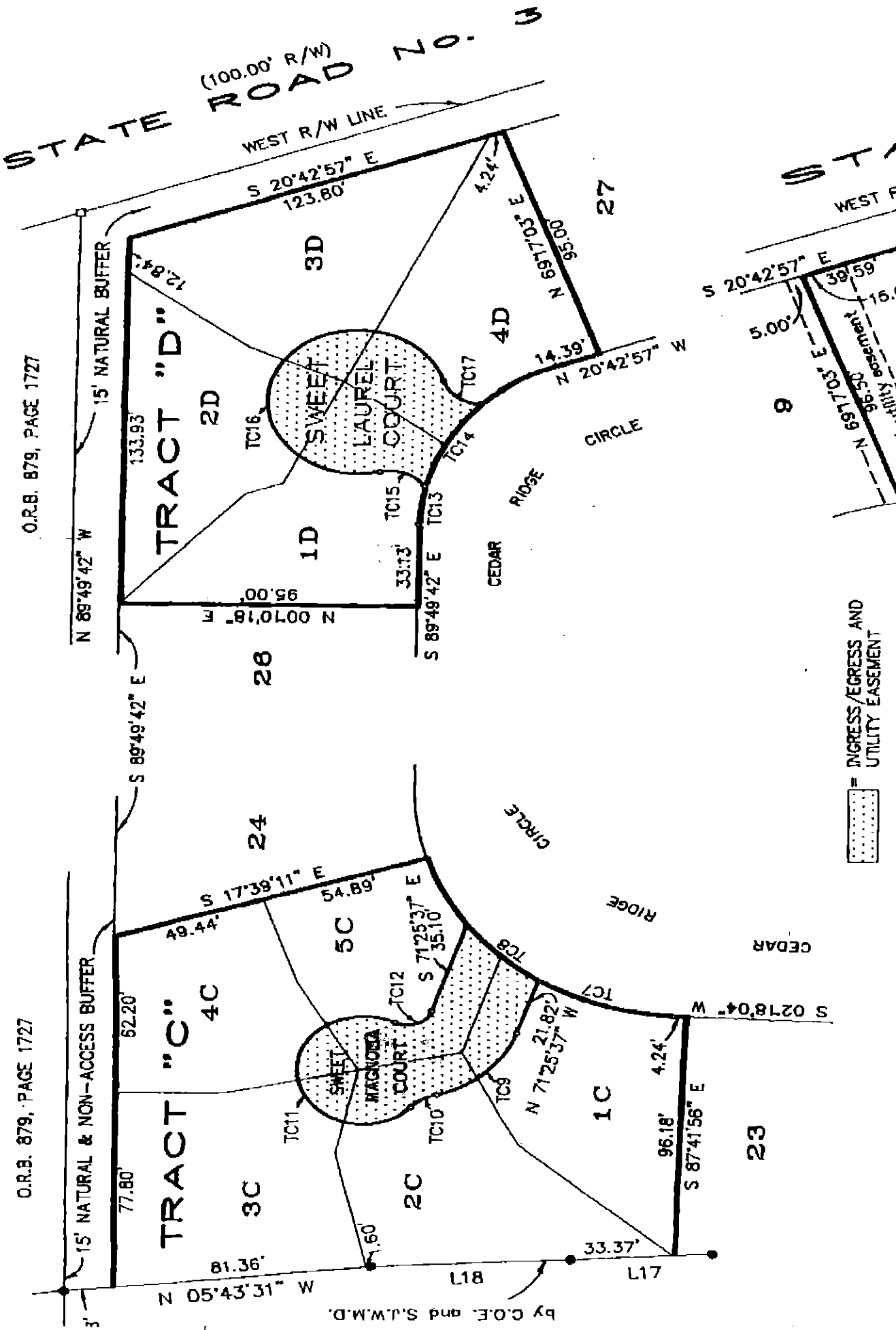
If I can be of any further assistance, please advise.

Sincerely,


George Kapler
Hairstreak Development Corp.

CLYDE RIDGE

A PARCEL OF LAND IN SECTION THIRTY THREE (33), TOWNSHIP SEVEN (7) SOUTH, RANGE THIRTY (30) EAST, ST. JOHNS COUNTY, FLORIDA.



O.R.B. 879, PAGE 1727

O.R.B. 879, PAGE 1727

☐ = INGRESS/EGRESS AND UTILITY EASEMENT

