

RESOLUTION NO. 97-14
RESOLUTION OF THE BOARD OF COUNTY
COMMISSIONERS OF ST. JOHNS COUNTY, FLORIDA
APPROVING A SUBDIVISION PLAT FOR
RIVER OAKS PLANTATION UNIT THREE

WHEREAS, R.O. Plantation Limited Partnership., a Florida Limited Partnership, as Owner, has applied to the Board of County Commissioners of St. Johns County, Florida, for approval to record a subdivision plat know as River Oaks Plantation Unit Three.

NOW, THEREFORE BE IT RESOLVED BY THE BOARD OF COUNTY COMMISSIONERS OF ST. JOHNS COUNTY, FLORIDA, as follows:

Section 1. The above-described subdivision plat and its dedicated areas depicted thereon are conditionally approved and accepted by the Board of County Commissioners of St. Johns County, Florida subject to Sections 2, 4, and 5.

Section 2. The Construction Bond is set in the amount of \$ 210,597.00 and shall be delivered to the Clerk of Courts and approved by him prior to recording the plat.

Section 3. A Warranty Bond is set in the amount of \$48,394.00.

Section 4. The approval and acceptance described in Section 1 shall not take effect until the Clerk has received a title opinion, certificate, or policy pertaining to the real property that is the subject of the aforementioned subdivision plat which opinion, certificate or policy is in a form acceptable to the County Attorney or Assistant County Attorney.

Section 5. The approval and acceptance described in Section 1 shall not take effect until the plat has been signed by each of the following departments, person or offices:

- a) Chairman or Vice-Chairman of the Board of County Commissioners of St. Johns County, Florida;

- b) Office of the County Attorney;
- c) County Planning and Zoning Department; and
- d) Clerk of Courts.

The Clerk shall not sign or accept the Plat for recording until it has been signed by each of the above persons or entities described in a) through c) above. If the plat is not signed and accepted by the Clerk for recording within 14 days from the date hereof, then the above-described conditional approval shall automatically terminate. If the plat is signed by the Clerk on or before such time, the conditions described herein shall be deemed to have been met.

ADOPTED by the Board of County Commissioners of St. Johns County, Florida, this
28 day of January, 1997.

BOARD OF COUNTY COMMISSIONERS
OF ST. JOHNS COUNTY, FLORIDA

BY: _____

Its Chair

ATTEST: Cheryl Strickland

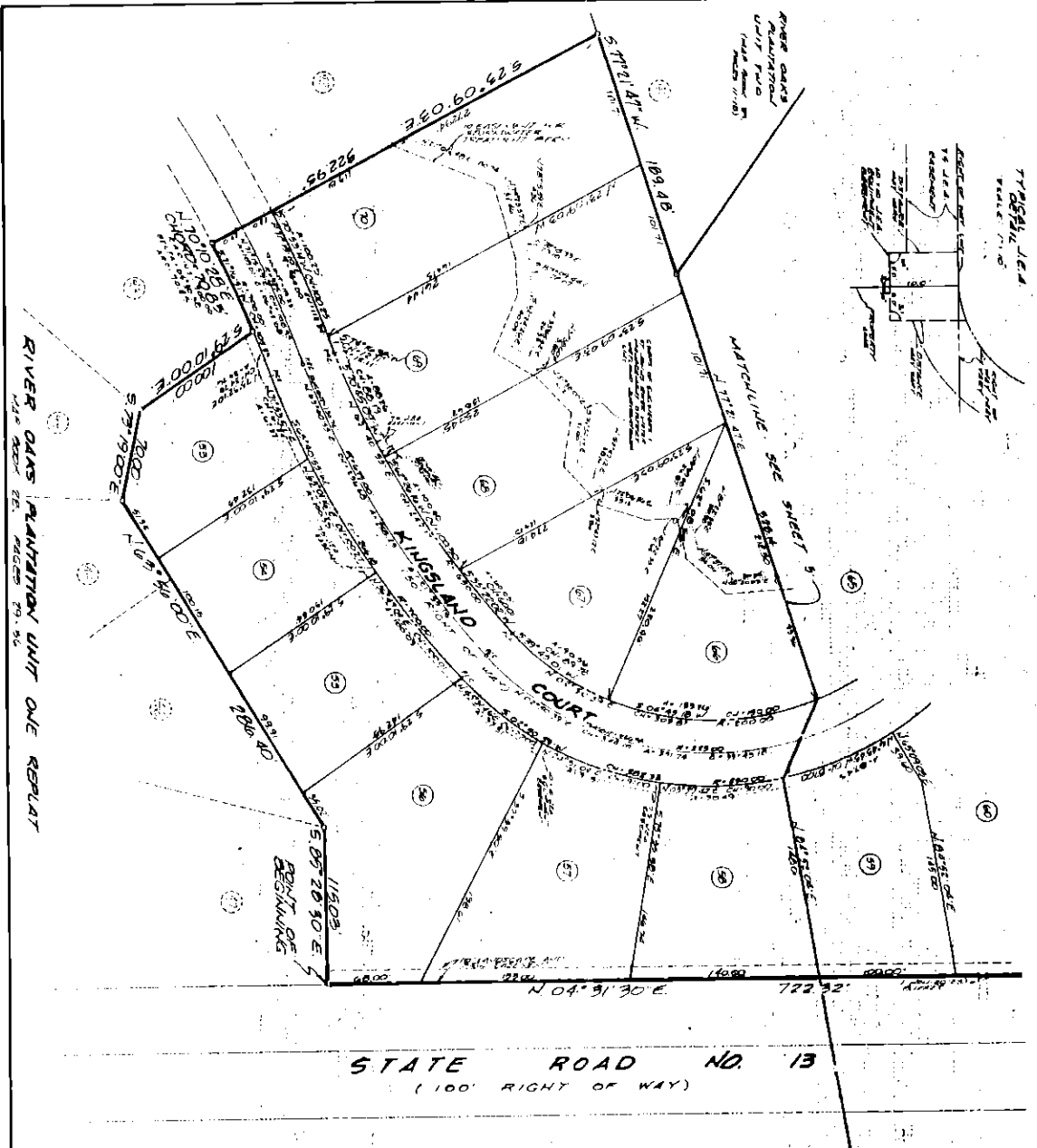
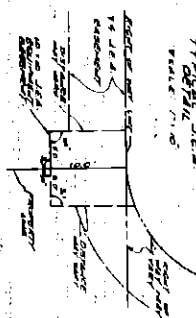


Deputy Clerk

RIVER OAKS PLANTATION UNIT THREE

A PORTION OF THE PLANTATION UNIT THREE, SECTION 19, A PORTION OF THE RESERVE EAGLES COUNTRY, SECTION 16, AND A PORTION OF THE WILLOW HAWKEY COUNTRY, SECTION 18, ALL BEING IN TOWNSHIP 3 SOUTH, RANGE 17 EAST, ST. JOHNS COUNTY, FLORIDA.

TR 15841, J.E.A.
 08/24/12
 10/1/12



RIVER OAKS PLANTATION UNIT ONE REPLAT

STATE ROAD NO. 13
 (100' RIGHT OF WAY)

MAP BOOK PAGE
 SHEET 1 OF 8 SHEETS



- LEGEND**
- 1. 1/4 SECTION
 - 2. 1/2 SECTION
 - 3. 3/4 SECTION
 - 4. SECTION
 - 5. 1/4 SECTION
 - 6. 1/2 SECTION
 - 7. 3/4 SECTION
 - 8. SECTION
 - 9. 1/4 SECTION
 - 10. 1/2 SECTION
 - 11. 3/4 SECTION
 - 12. SECTION
 - 13. 1/4 SECTION
 - 14. 1/2 SECTION
 - 15. 3/4 SECTION
 - 16. SECTION
 - 17. 1/4 SECTION
 - 18. 1/2 SECTION
 - 19. 3/4 SECTION
 - 20. SECTION

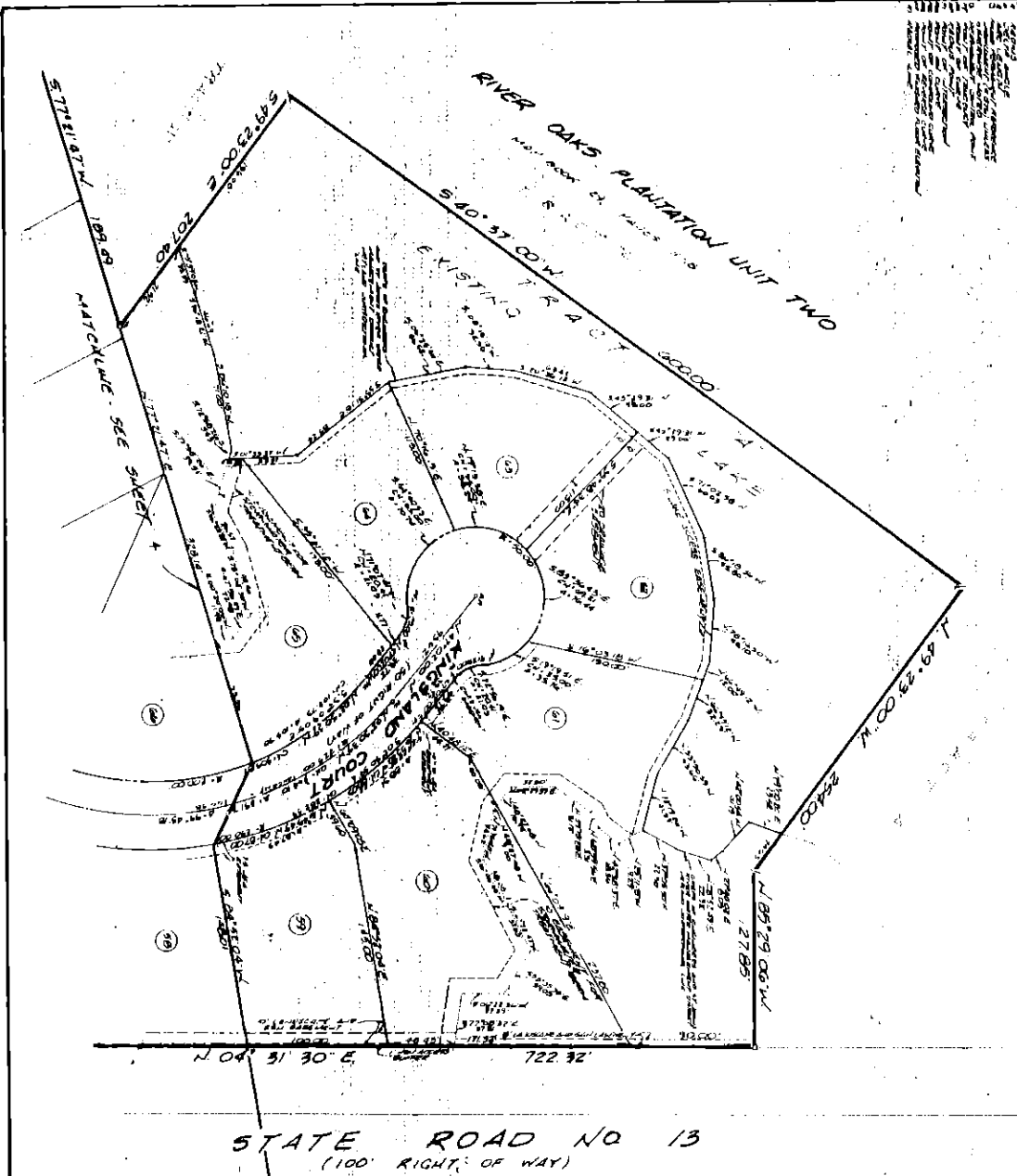
PREPARED BY
 CHARLES GIBSON & ASSOCIATES, INC.
 910 W. 10th Street
 JACKSONVILLE, FLORIDA 32211
 PHONE: 904-744-9499

RIVER OAKS PLANTATION UNIT THREE

A PORTION OF THE PLANTATION OF RIVER OAKS PLANTATION UNIT TWO, A PORTION OF THE PLANTATION OF RIVER OAKS PLANTATION UNIT ONE, AND A PORTION OF THE PLANTATION OF RIVER OAKS PLANTATION UNIT THREE, ALL BEING IN TOWNSHIP 5 SOUTH, RANGE 27 WEST, ST. LOUIS COUNTY, FLORIDA.

LEGEND:

- 1. 20' WIDE DRIVEWAY
- 2. 10' WIDE DRIVEWAY
- 3. 5' WIDE DRIVEWAY
- 4. 10' WIDE SIDEWALK
- 5. 5' WIDE SIDEWALK
- 6. 10' WIDE PATIO
- 7. 5' WIDE PATIO
- 8. 10' WIDE PORCH
- 9. 5' WIDE PORCH
- 10. 10' WIDE DECK
- 11. 5' WIDE DECK
- 12. 10' WIDE BALCONY
- 13. 5' WIDE BALCONY
- 14. 10' WIDE TERRACE
- 15. 5' WIDE TERRACE
- 16. 10' WIDE STAIRS
- 17. 5' WIDE STAIRS
- 18. 10' WIDE WALKWAY
- 19. 5' WIDE WALKWAY
- 20. 10' WIDE DRIVEWAY
- 21. 5' WIDE DRIVEWAY
- 22. 10' WIDE SIDEWALK
- 23. 5' WIDE SIDEWALK
- 24. 10' WIDE PATIO
- 25. 5' WIDE PATIO
- 26. 10' WIDE PORCH
- 27. 5' WIDE PORCH
- 28. 10' WIDE DECK
- 29. 5' WIDE DECK
- 30. 10' WIDE BALCONY
- 31. 5' WIDE BALCONY
- 32. 10' WIDE TERRACE
- 33. 5' WIDE TERRACE
- 34. 10' WIDE STAIRS
- 35. 5' WIDE STAIRS
- 36. 10' WIDE WALKWAY
- 37. 5' WIDE WALKWAY



STATE ROAD NO 13
(100' RIGHT OF WAY)

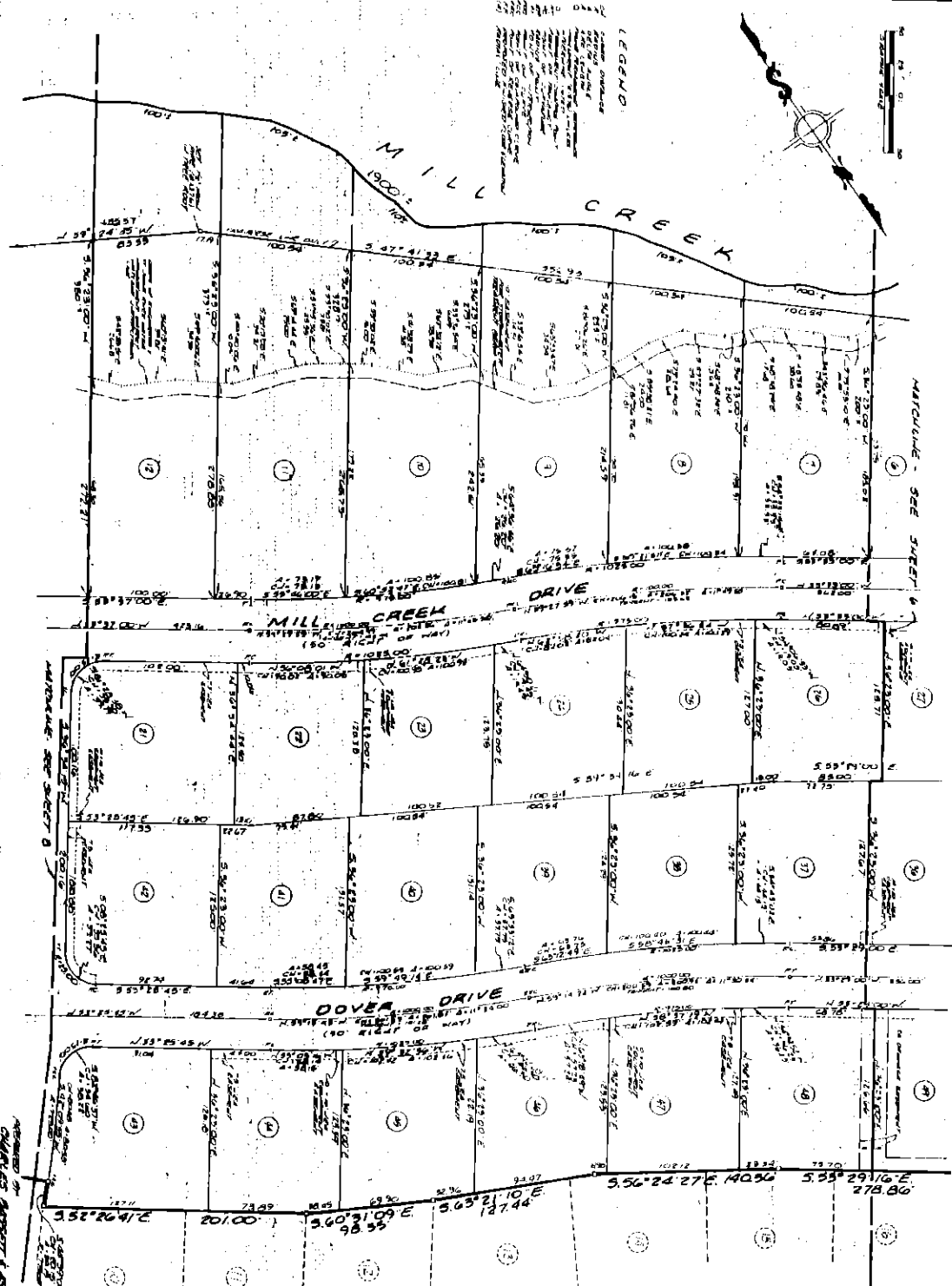
MAP BOOK PAGE
SHEET 5 OF 3 SHEETS



DESIGNED BY
GARY L. BASSETT & ASSOCIATES, INC.
10000 W. BAYVIEW AVENUE, SUITE 200
JACKSONVILLE, FLORIDA 32211
PHONE (904) 724-9433

RIVER OAKS PLANTATION UNIT THREE

A PORTION OF SECTION 1 AND 2, TOWNSHIP 35 N, RANGE 10 E, COUNTY OF WILLIAMSBURG, VIRGINIA, AS SHOWN ON THE RECORD PLAT OF SECTION 18, TOWNSHIP 35 N, RANGE 10 E, COUNTY OF WILLIAMSBURG, VIRGINIA.



MAP BOOK PAGE
SHEET - OF 3 SHEETS

RIVER OAKS PLANTATION UNIT TWO
MAP BOOK 29, PAGES 11-18

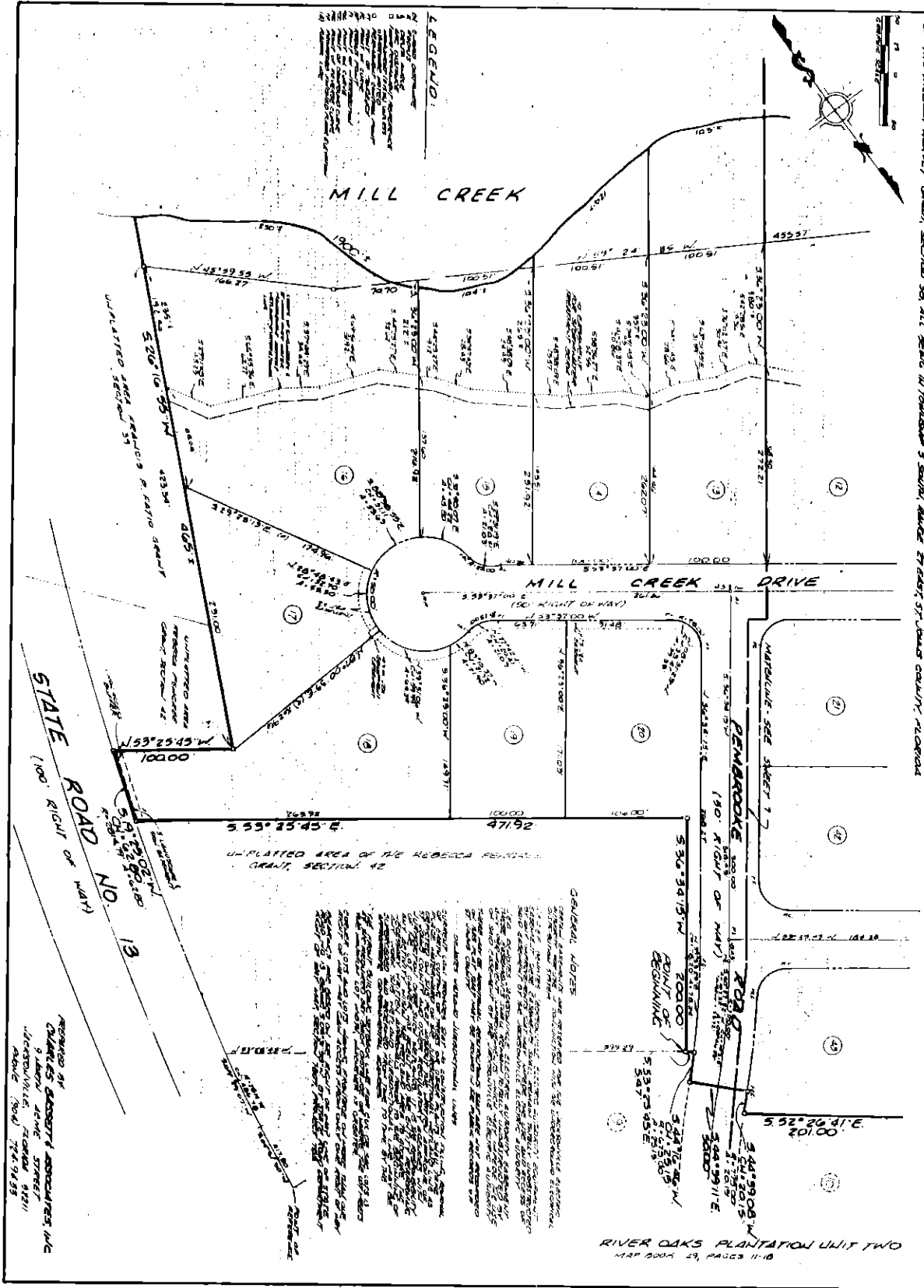
PREPARED BY
CHARLES ROBERT ASSOCIATES, INC.
9160 W. KANE STREET
DORSETT, VIRGINIA 22601
PHONE (703) 724-9499

RIVER OAKS PLANTATION UNIT THREE

MAP BOOK PAGE

SHEET 8 OF 9 SHEETS

A PORTION OF THE REBECCA FEATTALE GRANT, SECTION 39, A PORTION OF THE REBECCA FEATTALE GRANT, SECTION 42, AND A PORTION OF THE WILLIAM HENRY GRANT, SECTION 38, ALL BEING IN TOWNSHIP 5 SOUTH, RANGE 57 WEST, 9TH RANGE COUNTY, MISSOURI.



LEGEND:

- WATER COURSE
- EASEMENT
- UNPLATTED AREA
- ...

GENERAL NOTES

THESE NOTES ARE TO BE READ IN CONNECTION WITH THE PLAT AND THE REBECCA FEATTALE GRANT, SECTION 42, AND THE WILLIAM HENRY GRANT, SECTION 38, ALL BEING IN TOWNSHIP 5 SOUTH, RANGE 57 WEST, 9TH RANGE COUNTY, MISSOURI.

...

PREPARED BY
 CHARLES G. BASSOTT & ASSOCIATES, INC.
 9 LARCH AVE. STREET
 JACKSONVILLE, FLORIDA 32211
 PHONE (904) 761-9433