

RESOLUTION NO. 97- 49
RESOLUTION OF THE BOARD OF COUNTY
COMMISSIONERS OF ST. JOHNS COUNTY, FLORIDA
APPROVING A SUBDIVISION PLAT FOR
RIVER OAKS PLANTATION UNIT TWO REPLAT LOTS 58-72

WHEREAS, Gary D. Thomas & Cherie B. Thomas, his wife; Lloyd V. Henderson, III & Mary Denise Henderson, his wife, Robert L. Janes and Carolyn S. Janes, his wife, Steve L. and Carol H. Burrell, his wife, Donald S. Ware, Jr., Kevin Schaan and Beth Schaan, his wife Albert R. Lloyd and Robbie Lloyd, his wife, Bruce J. Walls and Charlene W. Walls, his wife, J. Howard Sheffield and Tinya D. Sheffield, his wife, R.O. Plantation Limited Partnership, A Florida Limited Partnership, as Owners, has applied to the Board of County Commissioners of St. Johns County, Florida, for approval to record a subdivision plat know as River Oaks Plantation Unit Two Replat Lots 58-72.

NOW, THEREFORE BE IT RESOLVED BY THE BOARD OF COUNTY COMMISSIONERS OF ST. JOHNS COUNTY, FLORIDA, as follows:

Section 1. The above-described subdivision plat and its dedicated areas depicted thereon are conditionally approved and accepted by the Board of County Commissioners of St. Johns County, Florida subject to Sections 2, 4, and 5.

Section 2. The Construction Bond is not required.

Section 3. A Warranty Bond is not required.

Section 4. The approval and acceptance described in Section 1 shall not take effect until the Clerk has received a title opinion, certificate, or policy pertaining to the real property that is the subject of the aforementioned subdivision plat which opinion, certificate or policy is in a form acceptable to the County Attorney or Assistant County Attorney.

Section 5. The approval and acceptance described in Section 1 shall not take effect until the plat has been signed by each of the following departments, person or offices:

- a) Chairman or Vice-Chairman of the Board of County Commissioners of St. Johns County, Florida;
- b) Office of the County Attorney;
- c) County Planning and Zoning Department; and
- d) Clerk of Courts.

The Clerk shall not sign or accept the Plat for recording until it has been signed by each of the above persons or entities described in a) through c) above. If the plat is not signed and accepted by the Clerk for recording within 14 days from the date hereof, then the above-described conditional approval shall automatically terminate. If the plat is signed by the Clerk on or before such time, the conditions described herein shall be deemed to have been met.

ADOPTED by the Board of County Commissioners of St. Johns County, Florida, this
25 day of March, 1997.

BOARD OF COUNTY COMMISSIONERS
OF ST. JOHNS COUNTY, FLORIDA

BY: _____

Its Chair

ATTEST: Cheryl Strickland

Ima Parrotti

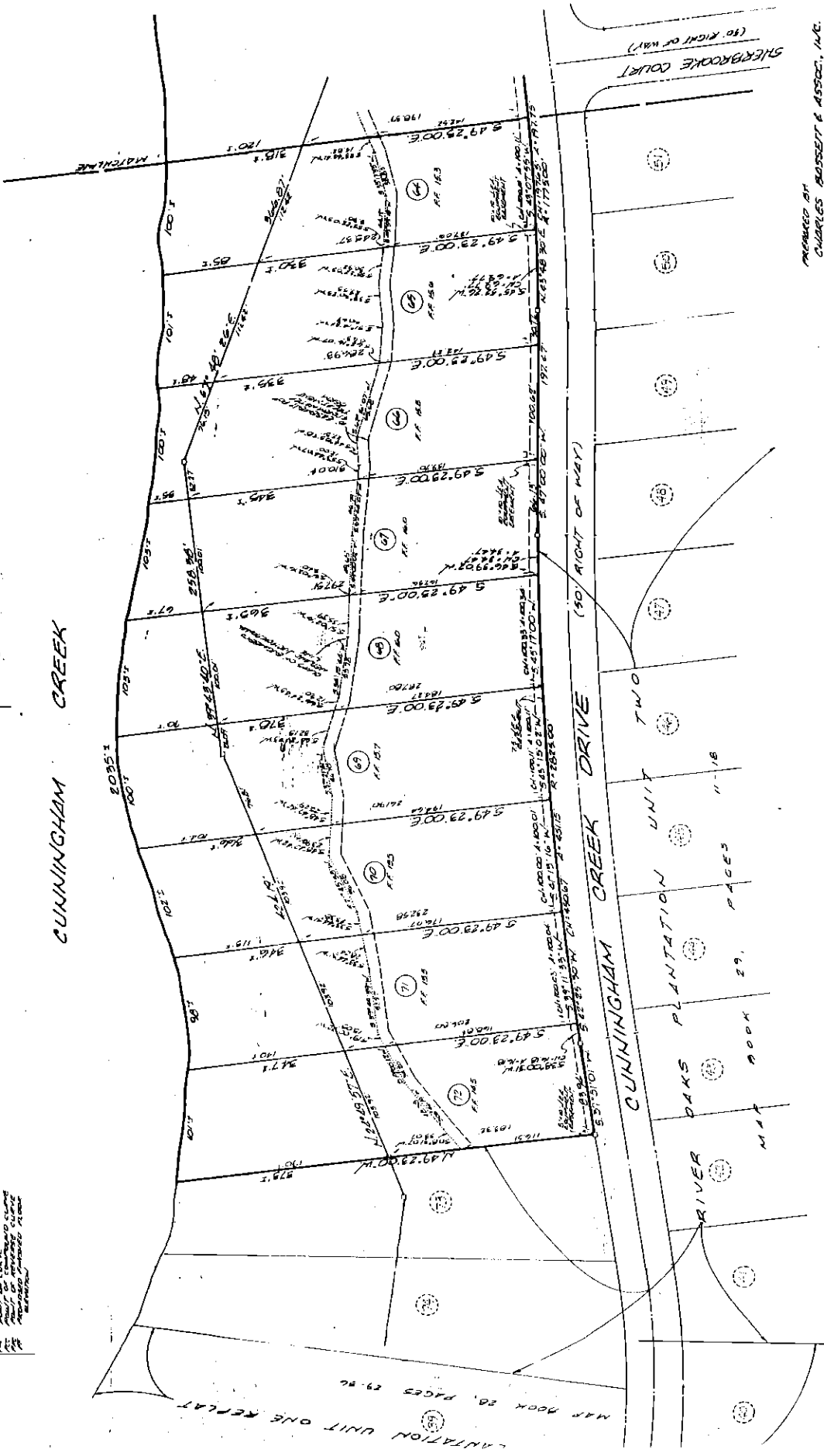
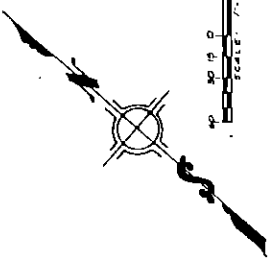
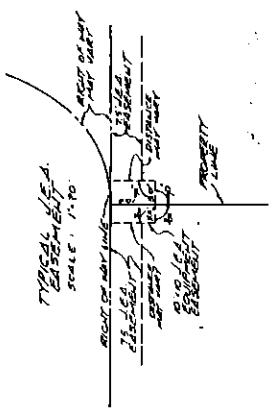
Deputy Clerk

RIVER OAKS PLANTATION UNIT TWO REPLAT OF LOTS 58 - 72

MAP BOOK PAGE
SHEET 8 OF 8 SHEETS

BEING A REPLAT OF A PART OF RIVER OAKS PLANTATION UNIT TWO AS RECORDED IN MAP BOOK 79, PAGES 11-13 OF THE PUBLIC RECORDS OF ST. JOHNS COUNTY, FLORIDA, ALSO BEING A PART OF THE WILLIAM WILSON COUNTY SECTION 29, AND A PART OF THE REBECCA FOREST COUNTY SECTION 29, ALL BEING IN TOWNSHIP 5 SOUTH, RANGE 27 WEST, TOGETHER WITH A PART OF THE REBECCA FOREST COUNTY SECTION 27, TOWNSHIP 4 SOUTH, RANGE 27 WEST, ST. JOHNS COUNTY, FLORIDA.

- LEGEND:**
- 1. BOUNDARY
 - 2. LOT
 - 3. LOT AREA
 - 4. LOT PERCENTAGE
 - 5. LOT DIMENSIONS
 - 6. LOT AREA (SQ. FT.)
 - 7. LOT PERCENTAGE
 - 8. LOT DIMENSIONS
 - 9. LOT AREA (SQ. FT.)
 - 10. LOT PERCENTAGE
 - 11. LOT DIMENSIONS
 - 12. LOT AREA (SQ. FT.)
 - 13. LOT PERCENTAGE
 - 14. LOT DIMENSIONS
 - 15. LOT AREA (SQ. FT.)
 - 16. LOT PERCENTAGE
 - 17. LOT DIMENSIONS
 - 18. LOT AREA (SQ. FT.)
 - 19. LOT PERCENTAGE
 - 20. LOT DIMENSIONS
 - 21. LOT AREA (SQ. FT.)
 - 22. LOT PERCENTAGE
 - 23. LOT DIMENSIONS
 - 24. LOT AREA (SQ. FT.)
 - 25. LOT PERCENTAGE
 - 26. LOT DIMENSIONS
 - 27. LOT AREA (SQ. FT.)
 - 28. LOT PERCENTAGE
 - 29. LOT DIMENSIONS
 - 30. LOT AREA (SQ. FT.)
 - 31. LOT PERCENTAGE
 - 32. LOT DIMENSIONS
 - 33. LOT AREA (SQ. FT.)
 - 34. LOT PERCENTAGE
 - 35. LOT DIMENSIONS
 - 36. LOT AREA (SQ. FT.)
 - 37. LOT PERCENTAGE
 - 38. LOT DIMENSIONS
 - 39. LOT AREA (SQ. FT.)
 - 40. LOT PERCENTAGE
 - 41. LOT DIMENSIONS
 - 42. LOT AREA (SQ. FT.)
 - 43. LOT PERCENTAGE
 - 44. LOT DIMENSIONS
 - 45. LOT AREA (SQ. FT.)
 - 46. LOT PERCENTAGE
 - 47. LOT DIMENSIONS
 - 48. LOT AREA (SQ. FT.)
 - 49. LOT PERCENTAGE
 - 50. LOT DIMENSIONS
 - 51. LOT AREA (SQ. FT.)
 - 52. LOT PERCENTAGE
 - 53. LOT DIMENSIONS
 - 54. LOT AREA (SQ. FT.)
 - 55. LOT PERCENTAGE
 - 56. LOT DIMENSIONS
 - 57. LOT AREA (SQ. FT.)
 - 58. LOT PERCENTAGE
 - 59. LOT DIMENSIONS
 - 60. LOT AREA (SQ. FT.)
 - 61. LOT PERCENTAGE
 - 62. LOT DIMENSIONS
 - 63. LOT AREA (SQ. FT.)
 - 64. LOT PERCENTAGE
 - 65. LOT DIMENSIONS
 - 66. LOT AREA (SQ. FT.)
 - 67. LOT PERCENTAGE
 - 68. LOT DIMENSIONS
 - 69. LOT AREA (SQ. FT.)
 - 70. LOT PERCENTAGE
 - 71. LOT DIMENSIONS
 - 72. LOT AREA (SQ. FT.)
 - 73. LOT PERCENTAGE
 - 74. LOT DIMENSIONS
 - 75. LOT AREA (SQ. FT.)
 - 76. LOT PERCENTAGE
 - 77. LOT DIMENSIONS
 - 78. LOT AREA (SQ. FT.)
 - 79. LOT PERCENTAGE
 - 80. LOT DIMENSIONS



PREPARED BY
CHARLES BOSSETT & ASSOC., INC.
9 NORTH ADAMS STREET
JACKSONVILLE, FLORIDA 32201
PHONE (904) 782-9475