

RESOLUTION NO. 98-147
RESOLUTION OF THE BOARD OF COUNTY
COMMISSIONERS OF ST. JOHNS COUNTY, FLORIDA
APPROVING A SUBDIVISION PLAT FOR
SAWMILL LAKES PHASE SIX

WHEREAS, Arvida-Sawmill Lakes Partners, Limited Partnership, a Delaware Limited Partnership, as Owner, has applied to the Board of County Commissioners of St. Johns County, Florida, for approval to record a subdivision plat know as Sawmill Lakes Phase Six.

NOW, THEREFORE BE IT RESOLVED BY THE BOARD OF COUNTY COMMISSIONERS OF ST. JOHNS COUNTY, FLORIDA, as follows:

Section 1. The above-described subdivision plat and its dedicated areas depicted thereon are conditionally approved and accepted by the Board of County Commissioners of St. Johns County, Florida subject to Sections 2, 4, and 5.

Section 2. The Letter of Credit has been filed with the Clerk of Court in the amount of \$458,132.06, which represent the fund for Sawmill Lakes Phases 6 and 8.

Section 3. A Warranty Bond will not be required.

Section 4. The approval and acceptance described in Section 1 shall not take effect until the Clerk has received a title opinion, certificate, or policy pertaining to the real property that is the subject of the aforementioned subdivision plat which opinion, certificate or policy is in a form acceptable to the County Attorney or Assistant County Attorney.

Section 5. The approval and acceptance described in Section 1 shall not take effect until the plat has been signed by each of the following departments, person or offices:

- a) Chairman or Vice-Chairman of the Board of County Commissioners of St. Johns County, Florida;

- b) Office of the County Attorney;
- c) County Planning and Zoning Department; and
- d) Clerk of Courts.
- e) Development Review Program

The Clerk shall not sign or accept the Plat for recording until it has been signed by each of the above persons or entities described in a) through c) above. If the plat is not signed and accepted by the Clerk for recording within 14 days from the date hereof, then the above-described conditional approval shall automatically terminate. If the plat is signed by the Clerk on or before such time, the conditions described herein shall be deemed to have been met.

ADOPTED by the Board of County Commissioners of St. Johns County, Florida, this 11 day of August, 1998.

BOARD OF COUNTY COMMISSIONERS
OF ST. JOHNS COUNTY, FLORIDA

BY: Moses A. Floyd
Moses A. Floyd, Its Chair

ATTEST: Cheryl Strickland

Patricia DeGrande
Deputy Clerk



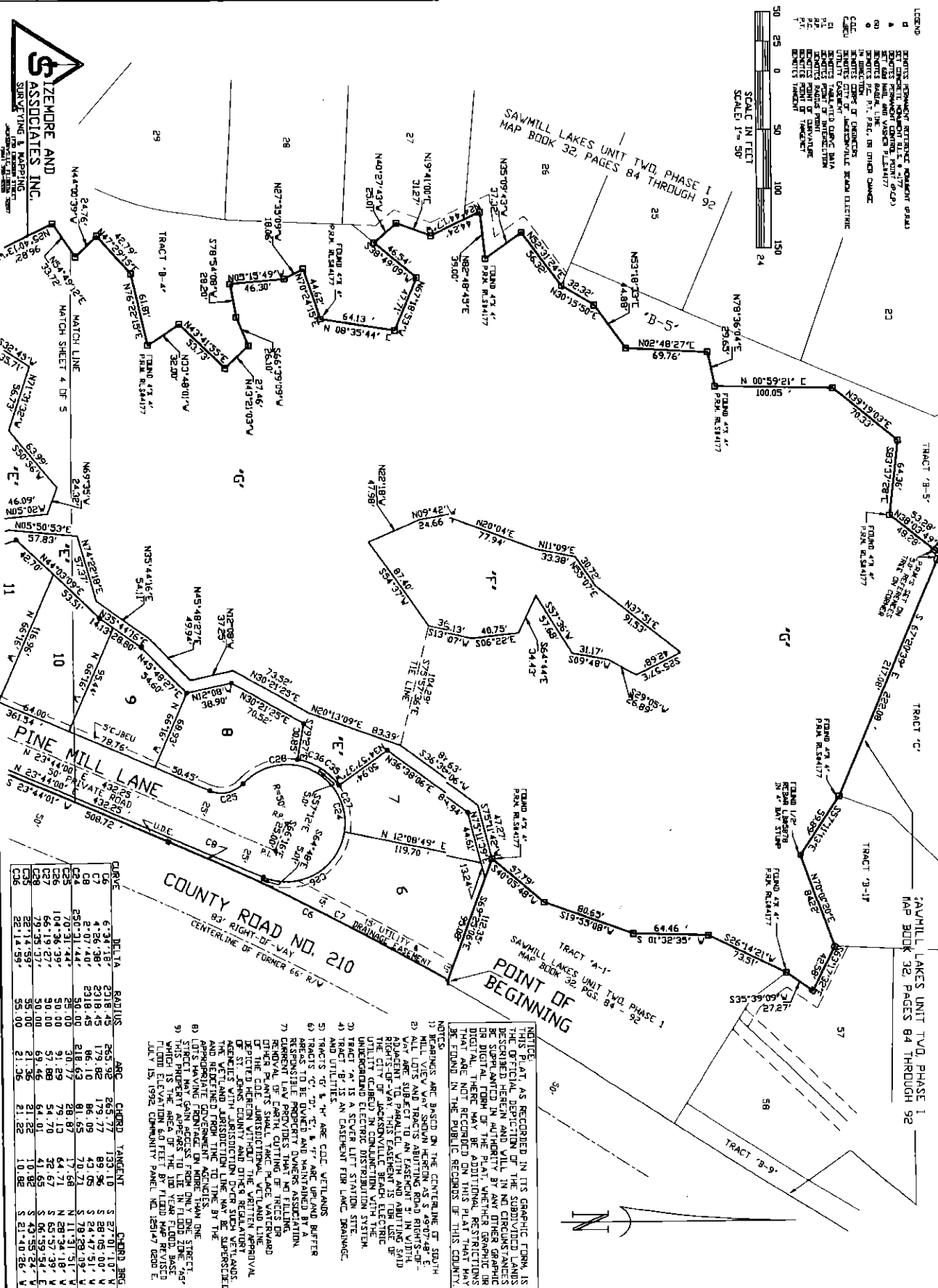
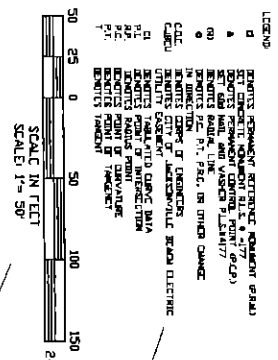
SAWMILL LAKES, PHASE SIX

A PART OF THE POND WESTERN DONATION, SECTION 54, TOWNSHIP 4 SOUTH, RANGE 29 EAST, ST. JOHN'S COUNTY, FLORIDA.

MAP BOOK PAGE
SHEET 5 OF 5 SHEETS

LEGEND

- 1 BOUNDARY BETWEEN EXISTING ROADWAY PAVEMENT AND EXISTING ASPHALT DRIVEWAY
- 2 EXISTING ASPHALT DRIVEWAY
- 3 EXISTING ASPHALT DRIVEWAY
- 4 EXISTING ASPHALT DRIVEWAY
- 5 EXISTING ASPHALT DRIVEWAY
- 6 EXISTING ASPHALT DRIVEWAY
- 7 EXISTING ASPHALT DRIVEWAY
- 8 EXISTING ASPHALT DRIVEWAY
- 9 EXISTING ASPHALT DRIVEWAY
- 10 EXISTING ASPHALT DRIVEWAY
- 11 EXISTING ASPHALT DRIVEWAY
- 12 EXISTING ASPHALT DRIVEWAY
- 13 EXISTING ASPHALT DRIVEWAY
- 14 EXISTING ASPHALT DRIVEWAY
- 15 EXISTING ASPHALT DRIVEWAY
- 16 EXISTING ASPHALT DRIVEWAY
- 17 EXISTING ASPHALT DRIVEWAY
- 18 EXISTING ASPHALT DRIVEWAY
- 19 EXISTING ASPHALT DRIVEWAY
- 20 EXISTING ASPHALT DRIVEWAY
- 21 EXISTING ASPHALT DRIVEWAY
- 22 EXISTING ASPHALT DRIVEWAY
- 23 EXISTING ASPHALT DRIVEWAY
- 24 EXISTING ASPHALT DRIVEWAY
- 25 EXISTING ASPHALT DRIVEWAY
- 26 EXISTING ASPHALT DRIVEWAY
- 27 EXISTING ASPHALT DRIVEWAY
- 28 EXISTING ASPHALT DRIVEWAY
- 29 EXISTING ASPHALT DRIVEWAY
- 30 EXISTING ASPHALT DRIVEWAY
- 31 EXISTING ASPHALT DRIVEWAY
- 32 EXISTING ASPHALT DRIVEWAY
- 33 EXISTING ASPHALT DRIVEWAY
- 34 EXISTING ASPHALT DRIVEWAY
- 35 EXISTING ASPHALT DRIVEWAY
- 36 EXISTING ASPHALT DRIVEWAY
- 37 EXISTING ASPHALT DRIVEWAY
- 38 EXISTING ASPHALT DRIVEWAY
- 39 EXISTING ASPHALT DRIVEWAY
- 40 EXISTING ASPHALT DRIVEWAY
- 41 EXISTING ASPHALT DRIVEWAY
- 42 EXISTING ASPHALT DRIVEWAY
- 43 EXISTING ASPHALT DRIVEWAY
- 44 EXISTING ASPHALT DRIVEWAY
- 45 EXISTING ASPHALT DRIVEWAY
- 46 EXISTING ASPHALT DRIVEWAY
- 47 EXISTING ASPHALT DRIVEWAY
- 48 EXISTING ASPHALT DRIVEWAY
- 49 EXISTING ASPHALT DRIVEWAY
- 50 EXISTING ASPHALT DRIVEWAY
- 51 EXISTING ASPHALT DRIVEWAY
- 52 EXISTING ASPHALT DRIVEWAY
- 53 EXISTING ASPHALT DRIVEWAY
- 54 EXISTING ASPHALT DRIVEWAY
- 55 EXISTING ASPHALT DRIVEWAY
- 56 EXISTING ASPHALT DRIVEWAY
- 57 EXISTING ASPHALT DRIVEWAY
- 58 EXISTING ASPHALT DRIVEWAY
- 59 EXISTING ASPHALT DRIVEWAY
- 60 EXISTING ASPHALT DRIVEWAY
- 61 EXISTING ASPHALT DRIVEWAY
- 62 EXISTING ASPHALT DRIVEWAY
- 63 EXISTING ASPHALT DRIVEWAY
- 64 EXISTING ASPHALT DRIVEWAY
- 65 EXISTING ASPHALT DRIVEWAY
- 66 EXISTING ASPHALT DRIVEWAY
- 67 EXISTING ASPHALT DRIVEWAY
- 68 EXISTING ASPHALT DRIVEWAY
- 69 EXISTING ASPHALT DRIVEWAY
- 70 EXISTING ASPHALT DRIVEWAY
- 71 EXISTING ASPHALT DRIVEWAY
- 72 EXISTING ASPHALT DRIVEWAY
- 73 EXISTING ASPHALT DRIVEWAY
- 74 EXISTING ASPHALT DRIVEWAY
- 75 EXISTING ASPHALT DRIVEWAY
- 76 EXISTING ASPHALT DRIVEWAY
- 77 EXISTING ASPHALT DRIVEWAY
- 78 EXISTING ASPHALT DRIVEWAY
- 79 EXISTING ASPHALT DRIVEWAY
- 80 EXISTING ASPHALT DRIVEWAY
- 81 EXISTING ASPHALT DRIVEWAY
- 82 EXISTING ASPHALT DRIVEWAY
- 83 EXISTING ASPHALT DRIVEWAY
- 84 EXISTING ASPHALT DRIVEWAY
- 85 EXISTING ASPHALT DRIVEWAY
- 86 EXISTING ASPHALT DRIVEWAY
- 87 EXISTING ASPHALT DRIVEWAY
- 88 EXISTING ASPHALT DRIVEWAY
- 89 EXISTING ASPHALT DRIVEWAY
- 90 EXISTING ASPHALT DRIVEWAY
- 91 EXISTING ASPHALT DRIVEWAY
- 92 EXISTING ASPHALT DRIVEWAY
- 93 EXISTING ASPHALT DRIVEWAY
- 94 EXISTING ASPHALT DRIVEWAY
- 95 EXISTING ASPHALT DRIVEWAY
- 96 EXISTING ASPHALT DRIVEWAY
- 97 EXISTING ASPHALT DRIVEWAY
- 98 EXISTING ASPHALT DRIVEWAY
- 99 EXISTING ASPHALT DRIVEWAY
- 100 EXISTING ASPHALT DRIVEWAY



CHORD	DELTA	RADIUS	ARC	CHORD	TANGENT	CHORD BEG
C1	6.34178	2318.45	265.92	265.77	133.10	3.270110° V
C2	4.26388	2318.45	179.82	179.77	89.00	3.284050° V
C3	2.07449	2318.45	86.10	86.09	42.50	3.297990° V
C4	2.07449	2318.45	86.10	86.09	42.50	3.297990° V
C5	1.03724	2318.45	43.05	43.04	21.25	3.311930° V
C6	1.03724	2318.45	43.05	43.04	21.25	3.311930° V
C7	0.51862	2318.45	21.52	21.51	10.62	3.325870° V
C8	0.51862	2318.45	21.52	21.51	10.62	3.325870° V
C9	0.25931	2318.45	10.76	10.75	5.31	3.339810° V
C10	0.25931	2318.45	10.76	10.75	5.31	3.339810° V
C11	0.12965	2318.45	5.38	5.37	2.65	3.353750° V
C12	0.12965	2318.45	5.38	5.37	2.65	3.353750° V
C13	0.06482	2318.45	2.69	2.68	1.32	3.367690° V
C14	0.06482	2318.45	2.69	2.68	1.32	3.367690° V
C15	0.03241	2318.45	1.34	1.33	0.66	3.381630° V
C16	0.03241	2318.45	1.34	1.33	0.66	3.381630° V

NOTICE: AS RECORDED IN ITS GRAPHIC FORM, IS THE OFFICIAL DESCRIPTION OF THE SUBDIVIDED LANDS DESCRIBED HEREIN AND WILL, IN NO CIRCUMSTANCES BE SUPPLANTED IN AUTHORITY BY ANY OTHER GRAPHIC OR DIGITAL FORM OF THE PLAT, WHETHER GRAPHIC OR DIGITAL. THE PUBLIC RECORDS OF THIS COUNTY WILL BE THE OFFICIAL RECORD OF THIS PLAT THAT MAY BE FOUND IN THE PUBLIC RECORDS OF THIS COUNTY.

NOTES:

- 1) BEARINGS ARE BASED ON THE CENTERLINE OF SOUTH MILL VIEW WAY SHOWN HEREIN AS S 89°07'40" E 100.00' N.
- 2) ALL LOTS AND PARCELS ARE ASSIGNED 2" IN WIDTH ADJACENT TO PARALLEL WITH AND ABUTTING SAID RIGHT-OF-WAY. THIS ASSIGNMENT IS FOR USE OF THE CITY OF JACKSONVILLE WITH THE UNDERGROUND ELECTRIC DISTRIBUTION SYSTEM.
- 3) TRACT 'A' IS A SEWER LIFT STATION SITE.
- 4) TRACT 'B' IS AN EASEMENT FOR LMC6, BRAWNCO, AND UTILITIES.
- 5) TRACTS 'D', 'E', 'F', 'G', 'H', 'I', 'J', 'K', 'L', 'M', 'N', 'O', 'P', 'Q', 'R', 'S', 'T', 'U', 'V', 'W', 'X', 'Y', 'Z', 'AA', 'AB', 'AC', 'AD', 'AE', 'AF', 'AG', 'AH', 'AI', 'AJ', 'AK', 'AL', 'AM', 'AN', 'AO', 'AP', 'AQ', 'AR', 'AS', 'AT', 'AU', 'AV', 'AW', 'AX', 'AY', 'AZ', 'BA', 'BB', 'BC', 'BD', 'BE', 'BF', 'BG', 'BH', 'BI', 'BJ', 'BK', 'BL', 'BM', 'BN', 'BO', 'BP', 'BQ', 'BR', 'BS', 'BT', 'BU', 'BV', 'BW', 'BX', 'BY', 'BZ', 'CA', 'CB', 'CC', 'CD', 'CE', 'CF', 'CG', 'CH', 'CI', 'CJ', 'CK', 'CL', 'CM', 'CN', 'CO', 'CP', 'CQ', 'CR', 'CS', 'CT', 'CU', 'CV', 'CW', 'CX', 'CY', 'CZ', 'DA', 'DB', 'DC', 'DD', 'DE', 'DF', 'DG', 'DH', 'DI', 'DJ', 'DK', 'DL', 'DM', 'DN', 'DO', 'DP', 'DQ', 'DR', 'DS', 'DT', 'DU', 'DV', 'DW', 'DX', 'DY', 'DZ', 'EA', 'EB', 'EC', 'ED', 'EE', 'EF', 'EG', 'EH', 'EI', 'EJ', 'EK', 'EL', 'EM', 'EN', 'EO', 'EP', 'EQ', 'ER', 'ES', 'ET', 'EU', 'EV', 'EW', 'EX', 'EY', 'EZ', 'FA', 'FB', 'FC', 'FD', 'FE', 'FF', 'FG', 'FH', 'FI', 'FJ', 'FK', 'FL', 'FM', 'FN', 'FO', 'FP', 'FQ', 'FR', 'FS', 'FT', 'FU', 'FV', 'FW', 'FX', 'FY', 'FZ', 'GA', 'GB', 'GC', 'GD', 'GE', 'GF', 'GG', 'GH', 'GI', 'GJ', 'GK', 'GL', 'GM', 'GN', 'GO', 'GP', 'GQ', 'GR', 'GS', 'GT', 'GU', 'GV', 'GW', 'GX', 'GY', 'GZ', 'HA', 'HB', 'HC', 'HD', 'HE', 'HF', 'HG', 'HH', 'HI', 'HJ', 'HK', 'HL', 'HM', 'HN', 'HO', 'HP', 'HQ', 'HR', 'HS', 'HT', 'HU', 'HV', 'HW', 'HX', 'HY', 'HZ', 'IA', 'IB', 'IC', 'ID', 'IE', 'IF', 'IG', 'IH', 'II', 'IJ', 'IK', 'IL', 'IM', 'IN', 'IO', 'IP', 'IQ', 'IR', 'IS', 'IT', 'IU', 'IV', 'IW', 'IX', 'IY', 'IZ', 'JA', 'JB', 'JC', 'JD', 'JE', 'JF', 'JG', 'JH', 'JI', 'JJ', 'JK', 'JL', 'JM', 'JN', 'JO', 'JP', 'JQ', 'JR', 'JS', 'JT', 'JU', 'JV', 'JW', 'JX', 'JY', 'JZ', 'KA', 'KB', 'KC', 'KD', 'KE', 'KF', 'KG', 'KH', 'KI', 'KJ', 'KK', 'KL', 'KM', 'KN', 'KO', 'KP', 'KQ', 'KR', 'KS', 'KT', 'KU', 'KV', 'KW', 'KX', 'KY', 'KZ', 'LA', 'LB', 'LC', 'LD', 'LE', 'LF', 'LG', 'LH', 'LI', 'LJ', 'LK', 'LL', 'LM', 'LN', 'LO', 'LP', 'LQ', 'LR', 'LS', 'LT', 'LU', 'LV', 'LW', 'LX', 'LY', 'LZ', 'MA', 'MB', 'MC', 'MD', 'ME', 'MF', 'MG', 'MH', 'MI', 'MJ', 'MK', 'ML', 'MM', 'MN', 'MO', 'MP', 'MQ', 'MR', 'MS', 'MT', 'MU', 'MV', 'MW', 'MX', 'MY', 'MZ', 'NA', 'NB', 'NC', 'ND', 'NE', 'NF', 'NG', 'NH', 'NI', 'NJ', 'NK', 'NL', 'NM', 'NN', 'NO', 'NP', 'NQ', 'NR', 'NS', 'NT', 'NU', 'NV', 'NW', 'NX', 'NY', 'NZ', 'OA', 'OB', 'OC', 'OD', 'OE', 'OF', 'OG', 'OH', 'OI', 'OJ', 'OK', 'OL', 'OM', 'ON', 'OO', 'OP', 'OQ', 'OR', 'OS', 'OT', 'OU', 'OV', 'OW', 'OX', 'OY', 'OZ', 'PA', 'PB', 'PC', 'PD', 'PE', 'PF', 'PG', 'PH', 'PI', 'PJ', 'PK', 'PL', 'PM', 'PN', 'PO', 'PP', 'PQ', 'PR', 'PS', 'PT', 'PU', 'PV', 'PW', 'PX', 'PY', 'PZ', 'QA', 'QB', 'QC', 'QD', 'QE', 'QF', 'QG', 'QH', 'QI', 'QJ', 'QK', 'QL', 'QM', 'QN', 'QO', 'QP', 'QQ', 'QR', 'QS', 'QT', 'QU', 'QV', 'QW', 'QX', 'QY', 'QZ', 'RA', 'RB', 'RC', 'RD', 'RE', 'RF', 'RG', 'RH', 'RI', 'RJ', 'RK', 'RL', 'RM', 'RN', 'RO', 'RP', 'RQ', 'RR', 'RS', 'RT', 'RU', 'RV', 'RW', 'RX', 'RY', 'RZ', 'SA', 'SB', 'SC', 'SD', 'SE', 'SF', 'SG', 'SH', 'SI', 'SJ', 'SK', 'SL', 'SM', 'SN', 'SO', 'SP', 'SQ', 'SR', 'SS', 'ST', 'SU', 'SV', 'SW', 'SX', 'SY', 'SZ', 'TA', 'TB', 'TC', 'TD', 'TE', 'TF', 'TG', 'TH', 'TI', 'TJ', 'TK', 'TL', 'TM', 'TN', 'TO', 'TP', 'TQ', 'TR', 'TS', 'TT', 'TU', 'TV', 'TW', 'TX', 'TY', 'TZ', 'UA', 'UB', 'UC', 'UD', 'UE', 'UF', 'UG', 'UH', 'UI', 'UJ', 'UK', 'UL', 'UM', 'UN', 'UO', 'UP', 'UQ', 'UR', 'US', 'UT', 'UU', 'UV', 'UW', 'UX', 'UY', 'UZ', 'VA', 'VB', 'VC', 'VD', 'VE', 'VF', 'VG', 'VH', 'VI', 'VJ', 'VK', 'VL', 'VM', 'VN', 'VO', 'VP', 'VQ', 'VR', 'VS', 'VT', 'VU', 'VV', 'VW', 'VX', 'VY', 'VZ', 'WA', 'WB', 'WC', 'WD', 'WE', 'WF', 'WG', 'WH', 'WI', 'WJ', 'WK', 'WL', 'WM', 'WN', 'WO', 'WP', 'WQ', 'WR', 'WS', 'WT', 'WU', 'WV', 'WW', 'WX', 'WY', 'WZ', 'XA', 'XB', 'XC', 'XD', 'XE', 'XF', 'XG', 'XH', 'XI', 'XJ', 'XK', 'XL', 'XM', 'XN', 'XO', 'XP', 'XQ', 'XR', 'XS', 'XT', 'XU', 'XV', 'XW', 'XZ', 'YA', 'YB', 'YC', 'YD', 'YE', 'YF', 'YG', 'YH', 'YI', 'YJ', 'YK', 'YL', 'YM', 'YN', 'YO', 'YP', 'YQ', 'YR', 'YS', 'YT', 'YU', 'YV', 'YW', 'YZ', 'ZA', 'ZB', 'ZC', 'ZD', 'ZE', 'ZF', 'ZG', 'ZH', 'ZI', 'ZJ', 'ZK', 'ZL', 'ZM', 'ZN', 'ZO', 'ZP', 'ZQ', 'ZR', 'ZS', 'ZT', 'ZU', 'ZV', 'ZW', 'ZX', 'ZY', 'ZZ'.