

RESOLUTION NO. 98- 160
RESOLUTION OF THE BOARD OF COUNTY
COMMISSIONERS OF ST. JOHNS COUNTY, FLORIDA
APPROVING A SUBDIVISION PLAT FOR
PARKES OF JULINGTON CREEK PLANTATION PHASE TWO-A2

WHEREAS, Julington Creek Development Company, A Florida Corporation, as Owner, has applied to the Board of County Commissioners of St. Johns County, Florida, for approval to record a subdivision plat know as Parkes of Julington Creek Plantation Phase Two-A2.

NOW, THEREFORE BE IT RESOLVED BY THE BOARD OF COUNTY COMMISSIONERS OF ST. JOHNS COUNTY, FLORIDA, as follows:

Section 1. The above-described subdivision plat and its dedicated areas depicted thereon are conditionally approved and accepted by the Board of County Commissioners of St. Johns County, Florida subject to Sections 2, 4, and 5.

Section 2. A Letter of Credit has been filed with the Clerk of Court in the amount of \$104,931.73.

Section 3. A Warranty Bond will be required in the amount of \$28,066.50.

Section 4. The approval and acceptance described in Section 1 shall not take effect until the Clerk has received a title opinion, certificate, or policy pertaining to the real property that is the subject of the aforementioned subdivision plat which opinion, certificate or policy is in a form acceptable to the County Attorney or Assistant County Attorney.

Section 5. The approval and acceptance described in Section 1 shall not take effect until the plat has been signed by each of the following departments, person or offices:

- a) Chairman or Vice-Chairman of the Board of County Commissioners of St. Johns County, Florida;

- b) Office of the County Attorney;
- c) County Planning and Zoning Department; and
- d) Clerk of Courts.
- e) Development Review Division

The Clerk shall not sign or accept the Plat for recording until it has been signed by each of the above persons or entities described in a) through c) and e) above. If the plat is not signed and accepted by the Clerk for recording within 14 days from the date hereof, then the above-described conditional approval shall automatically terminate. If the plat is signed by the Clerk on or before such time, the conditions described herein shall be deemed to have been met.

ADOPTED by the Board of County Commissioners of St. Johns County, Florida, this 25 day of August, 1998.

BOARD OF COUNTY COMMISSIONERS
OF ST. JOHNS COUNTY, FLORIDA

BY: Moses A. Floyd
Moses A. Floyd, Its Chair

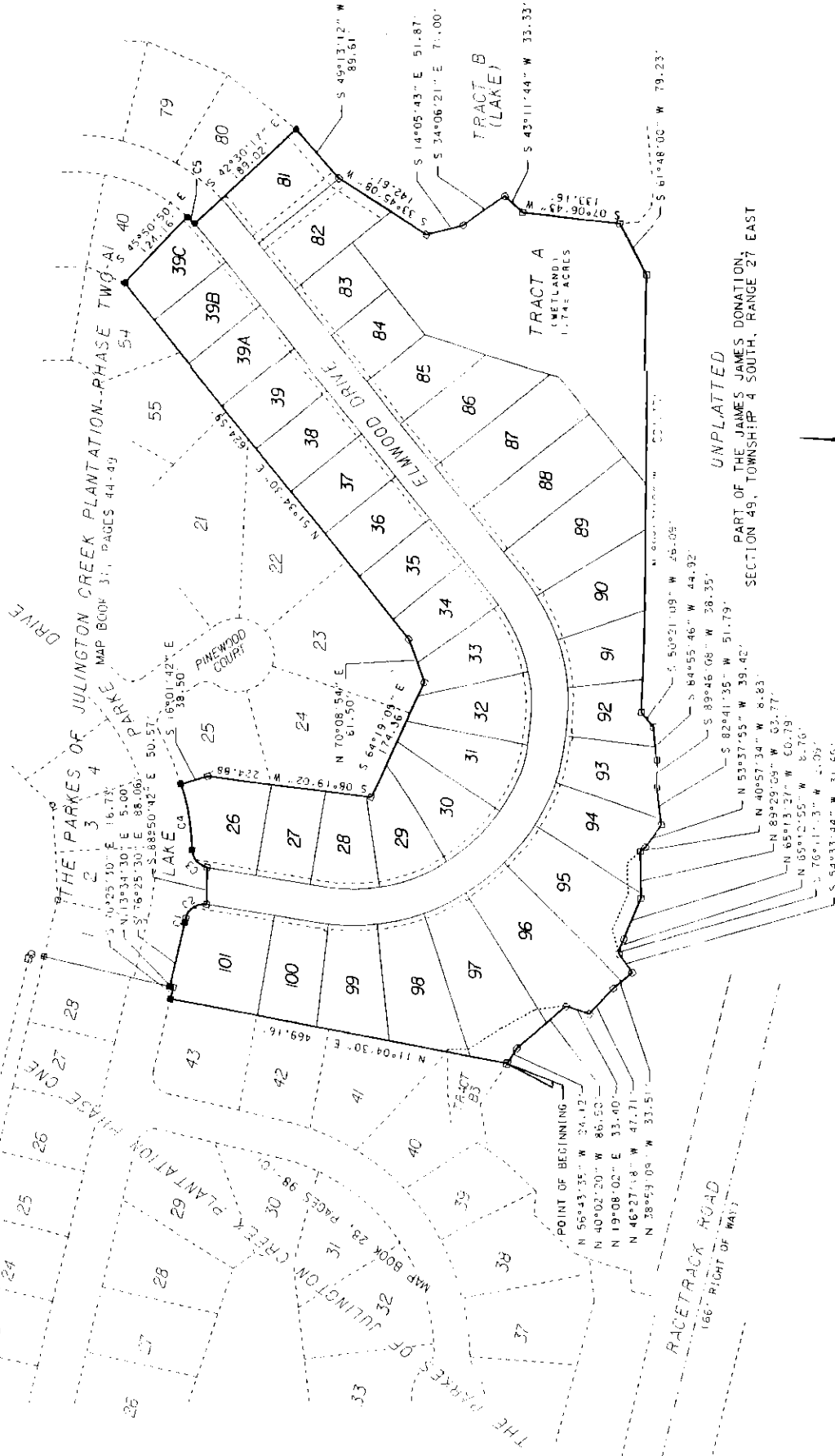
ATTEST: Cheryl Strickland

Patricia DeGrande
Deputy Clerk

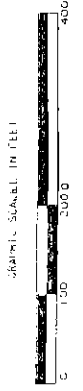


PARKES OF JULINGTON CREEK PLANTATION PHASE TWO-A2
 A PART OF THE JAMES JAMES DONATION, SECTION 49, TOWNSHIP 4 SOUTH, RANGE 27 EAST, ST. JOHNS COUNTY, FLORIDA.

THE PARKES OF JULINGTON CREEK PLANTATION PHASE TWO-A1
 MAP BOOK 31, PAGES 44-49



UNPLATTED
 PART OF THE JAMES JAMES DONATION,
 SECTION 49, TOWNSHIP 4 SOUTH, RANGE 27 EAST



CURV	RADIUS	DELTA	ARC	TANGENT	CHORD	BEARING
C1	375.00'	00°55'56"	6.10'	3.05'	6.10'	S 76°52'28" E
C2	25.00'	87°08'02"	38.07'	32.78'	34.46'	S 33°47'35" E
C3	45.00'	78°27'47"	34.24'	30.41'	31.02'	N 49°00'30" E
C4	475.00'	14°16'06"	30.30'	46.53'	43.14'	N 81°06'21" E
C5	225.00'	03°20'33"	13.13'	6.50'	13.13'	S 45°49'27" W

PREPARED BY:
 HESSENT, HAMACK, AND RUCKMAN, INC.
 1900 CORPORATE SQUARE BOULEVARD
 JACKSONVILLE, FLORIDA 32216
 PHONE: (904) 731-1111
 CERTIFICATION NUMBER: LB8779