

RESOLUTION NO. 99- 67
RESOLUTION OF THE BOARD OF COUNTY
COMMISSIONERS OF ST. JOHNS COUNTY, FLORIDA
APPROVING A SUBDIVISION PLAT FOR MOSES
CREEK ESTATES PHASE I

WHEREAS, Moses Creek Estates Developers, Inc., a Florida Corporation, as Owner, has applied to the Board of County Commissioners of St. Johns County, Florida, for approval to record a subdivision plat known as Moses Creek Estates, Phase I.

NOW, THEREFORE BE IT RESOLVED BY THE BOARD OF COUNTY COMMISSIONERS OF ST. JOHNS COUNTY, FLORIDA, as follows:

Section 1. The above-described subdivision plat and its dedicated areas depicted thereon are conditionally approved and accepted by the Board of County Commissioners of St. Johns County, Florida subject to Sections 2, 4, and 5.

Section 2. A Letter of Credit has been filed with the Clerk of Court in the amount of \$175,000.00.

Section 3. A Warranty Bond will be required in the amount of \$87,505.00.

Section 4. The approval and acceptance described in Section 1 shall not take effect until the Clerk has received a title opinion, certificate, or policy pertaining to the real property that is the subject of the aforementioned subdivision plat which opinion, certificate or policy is in a form acceptable to the County Attorney or Assistant County Attorney.

Section 5. The approval and acceptance described in Section 1 shall not take effect until the plat has been signed by each of the following departments, person or offices:

- a) Chairman or Vice-Chairman of the Board of County Commissioners of St. Johns County, Florida;
- b) Office of the County Attorney;
- c) County Planning and Zoning Department;

- d) County Development Review Program; and
- e) Clerk of Courts.

The Clerk shall not sign or accept the Plat for recording until it has been signed by each of the above persons or entities described in a) through d) above. If the plat is not signed and accepted by the Clerk for recording within 14 days from the date hereof, then the above-described conditional approval shall automatically terminate. If the plat is signed by the Clerk on or before such time, the conditions described herein shall be deemed to have been met.

ADOPTED by the Board of County Commissioners of St. Johns County, Florida, this 27
day of April, 1999.

BOARD OF COUNTY COMMISSIONERS
OF ST. JOHNS COUNTY, FLORIDA

BY: Marc Jacolone
Marc A. Jacolone, Its Chair

ATTEST: Cheryl Strickland, Clerk

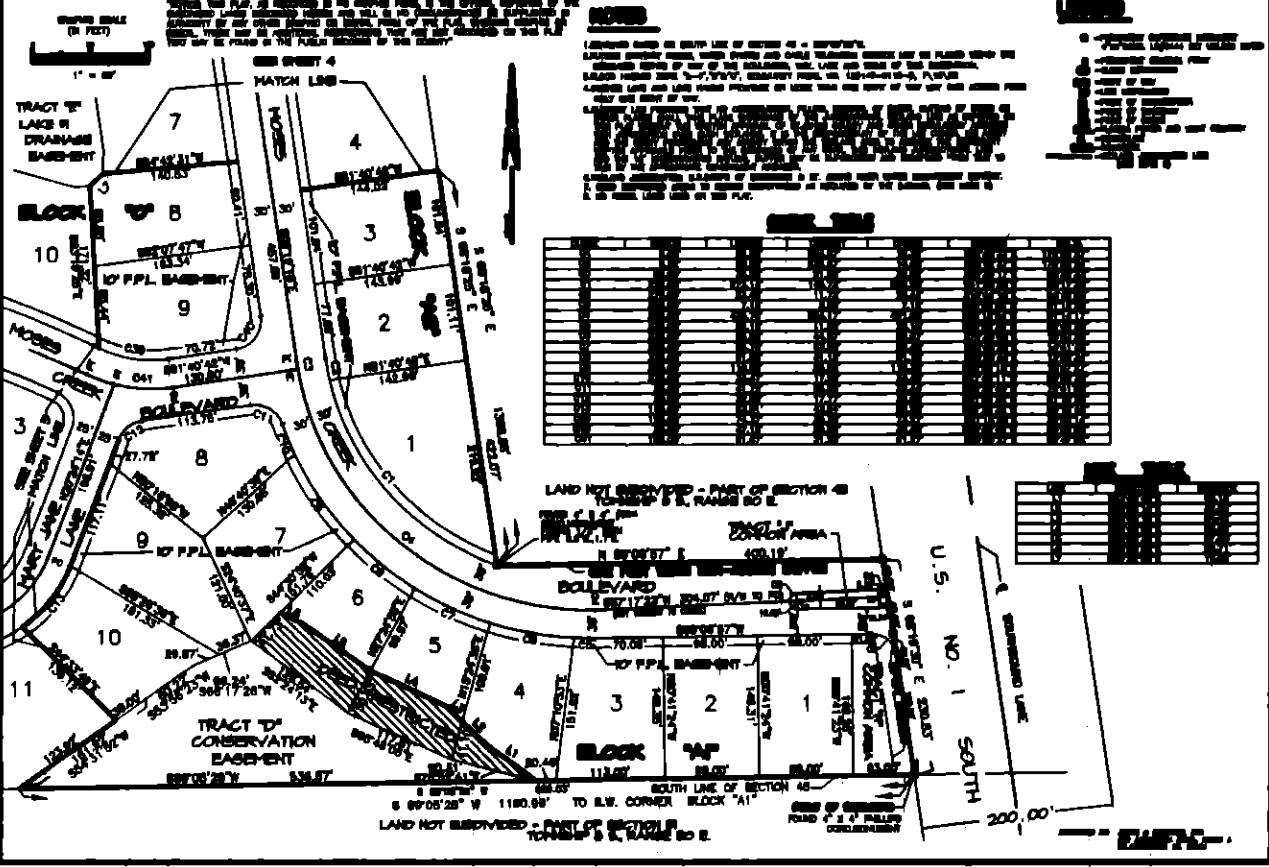
Patricia DeStanda

Deputy Clerk

moses creek estates-phase 1

MAP BOOK PAGE

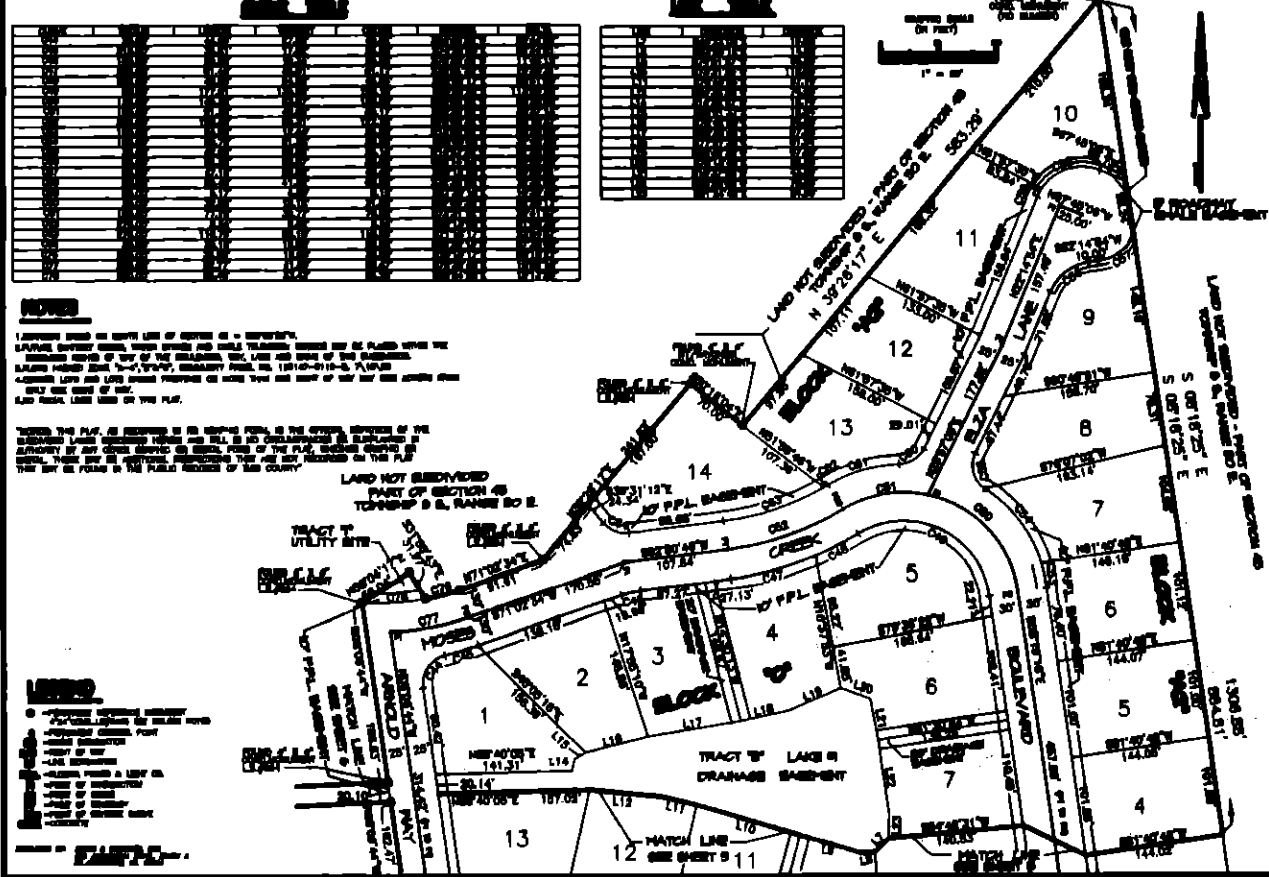
PART OF A PAPP GRANT, SECTION 48, TOWNSHIP 8 SOUTH, RANGE 30 EAST, ST. JOHNS COUNTY, FLORIDA SHEET 3 OF 6



moses creek estates-phase 1

MAP BOOK PAGE

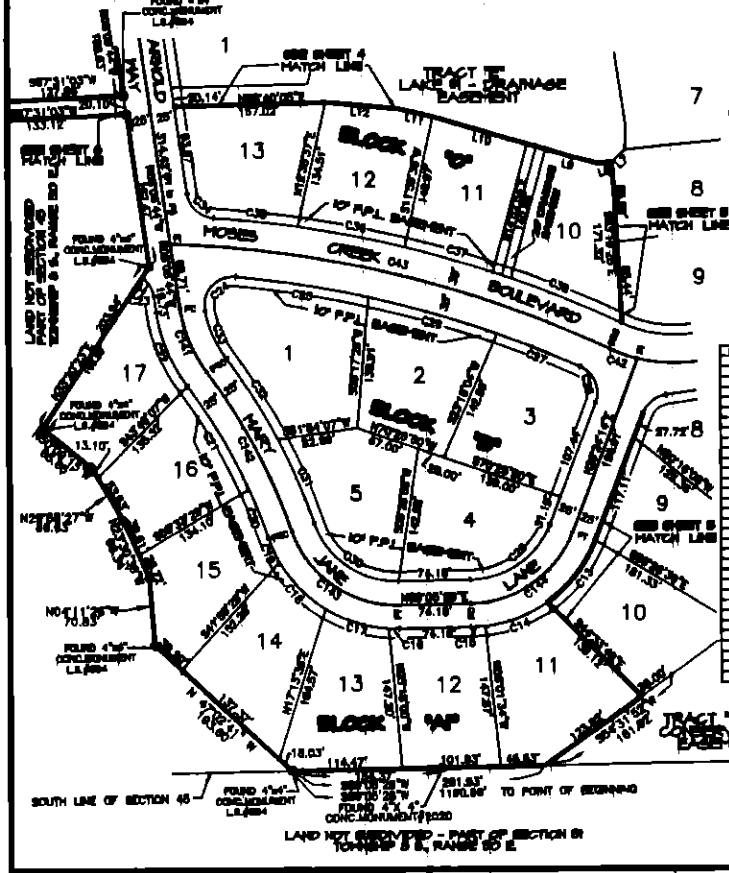
PART OF A PAPP GRANT SECTION 48, TOWNSHIP 8 SOUTH, RANGE 30 EAST, ST. JOHNS COUNTY, FLORIDA SHEET 4 OF 6



moses creek estates-phase 1

MAP BOOK _____ PAGE _____

PART OF A FIFTY ACRT. SECTION 48, TOWNSHIP 8 SOUTH, RANGE 30 EAST, ST. JOHNS COUNTY, FLORIDA SHEET 2 OF 2



NOTES

1. THE PLAT IS SUBJECT TO THE RIGHTS OF THE STATE, COUNTY AND FEDERAL GOVERNMENTS AND TO THE RIGHTS OF THE PUBLIC IN THE PUBLIC HIGHWAYS OF THE STATE AND FEDERAL GOVERNMENTS.

LEGEND

1. UNIMPROVED LOT OR TRACT OF LAND AS SHOWN ON THIS PLAT.

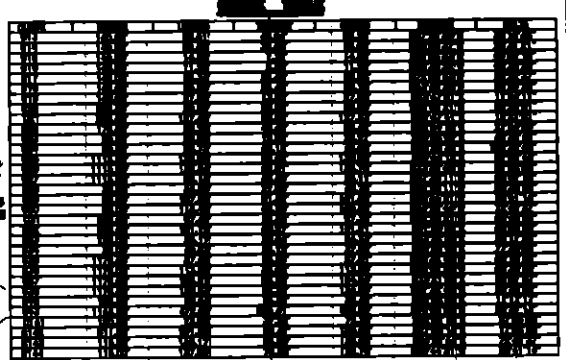
2. IMPROVED LOT OR TRACT OF LAND AS SHOWN ON THIS PLAT.

3. UNIMPROVED LOT OR TRACT OF LAND AS SHOWN ON THIS PLAT.

4. IMPROVED LOT OR TRACT OF LAND AS SHOWN ON THIS PLAT.

5. LOT OR TRACT OF LAND AS SHOWN ON THIS PLAT.

6. LOT OR TRACT OF LAND AS SHOWN ON THIS PLAT.



LEGEND

1. UNIMPROVED LOT OR TRACT OF LAND AS SHOWN ON THIS PLAT.

2. IMPROVED LOT OR TRACT OF LAND AS SHOWN ON THIS PLAT.

3. UNIMPROVED LOT OR TRACT OF LAND AS SHOWN ON THIS PLAT.

4. IMPROVED LOT OR TRACT OF LAND AS SHOWN ON THIS PLAT.

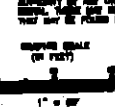
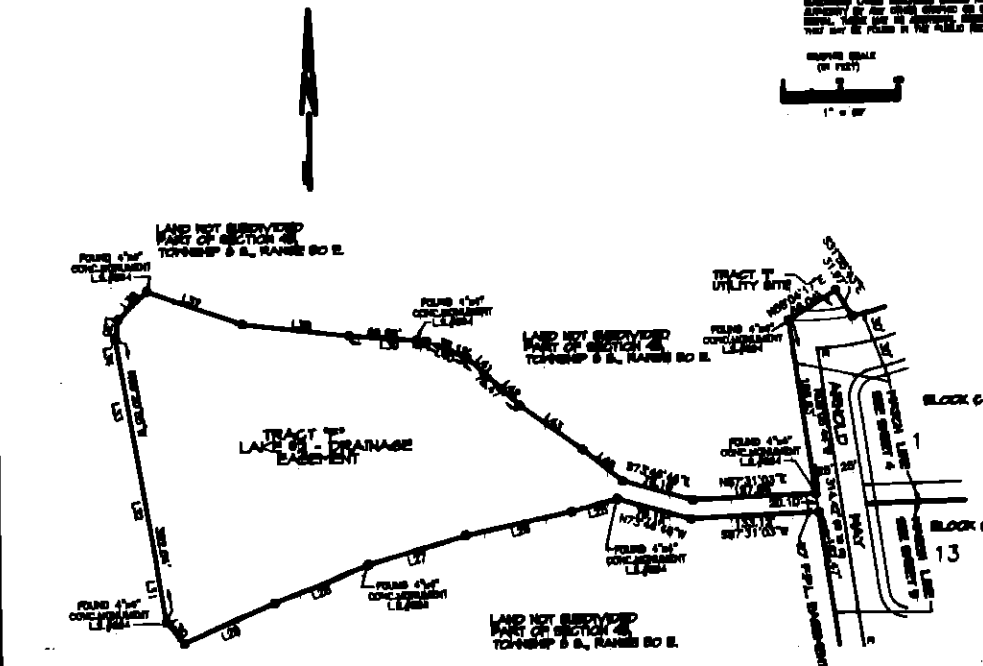
5. LOT OR TRACT OF LAND AS SHOWN ON THIS PLAT.

6. LOT OR TRACT OF LAND AS SHOWN ON THIS PLAT.

moses creek estates-phase 1

MAP BOOK _____ PAGE _____

PART OF A FIFTY ACRT. SECTION 48, TOWNSHIP 8 SOUTH, RANGE 30 EAST, ST. JOHNS COUNTY, FLORIDA SHEET 1 OF 2



NOTES

1. THE PLAT IS SUBJECT TO THE RIGHTS OF THE STATE, COUNTY AND FEDERAL GOVERNMENTS AND TO THE RIGHTS OF THE PUBLIC IN THE PUBLIC HIGHWAYS OF THE STATE AND FEDERAL GOVERNMENTS.

LEGEND

1. UNIMPROVED LOT OR TRACT OF LAND AS SHOWN ON THIS PLAT.

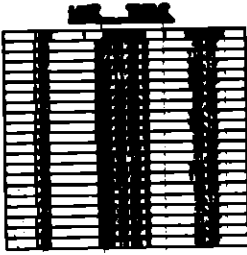
2. IMPROVED LOT OR TRACT OF LAND AS SHOWN ON THIS PLAT.

3. UNIMPROVED LOT OR TRACT OF LAND AS SHOWN ON THIS PLAT.

4. IMPROVED LOT OR TRACT OF LAND AS SHOWN ON THIS PLAT.

5. LOT OR TRACT OF LAND AS SHOWN ON THIS PLAT.

6. LOT OR TRACT OF LAND AS SHOWN ON THIS PLAT.



NOTES

1. UNIMPROVED LOT OR TRACT OF LAND AS SHOWN ON THIS PLAT.

2. IMPROVED LOT OR TRACT OF LAND AS SHOWN ON THIS PLAT.

3. UNIMPROVED LOT OR TRACT OF LAND AS SHOWN ON THIS PLAT.

4. IMPROVED LOT OR TRACT OF LAND AS SHOWN ON THIS PLAT.

5. LOT OR TRACT OF LAND AS SHOWN ON THIS PLAT.

6. LOT OR TRACT OF LAND AS SHOWN ON THIS PLAT.

EMPTC