

RESOLUTION NO. 99 - 85

**A RESOLUTION OF THE BOARD OF COUNTY  
COMMISSIONERS OF ST. JOHNS COUNTY, FLORIDA  
NAMING AN UNNAMED EASEMENT TRIER LANE.**

**WHEREAS**, an application has been duly made to the Board of County Commissioners to name an unnamed easement Trier Lane; and

**WHEREAS**, the procedure outlined in Resolution #92-65 has been followed by the petitioners; and

**WHEREAS**, it is found to be in the public interest to rename this street as requested on furtherance of the public health, safety, and welfare.

**NOW THEREFORE, BE IT RESOLVED** by the Board of County Commissioners as follows:

Section 1. The petition to name an unnamed Easement Trier Lane and shall here after be known by that name.

Section 2. The E 9-1-1 Coordinator is instructed to take whatever steps are necessary to rename the street and to notify the Property Appraiser's Office of this change.

Section 3. The petitioner shall notify, in writing, all residents affected by this resolution.

**PASSED AND ADOPTED** by the Board of County Commissioners of St. Johns County, State of Florida, this 25<sup>th</sup> day of May 1999.

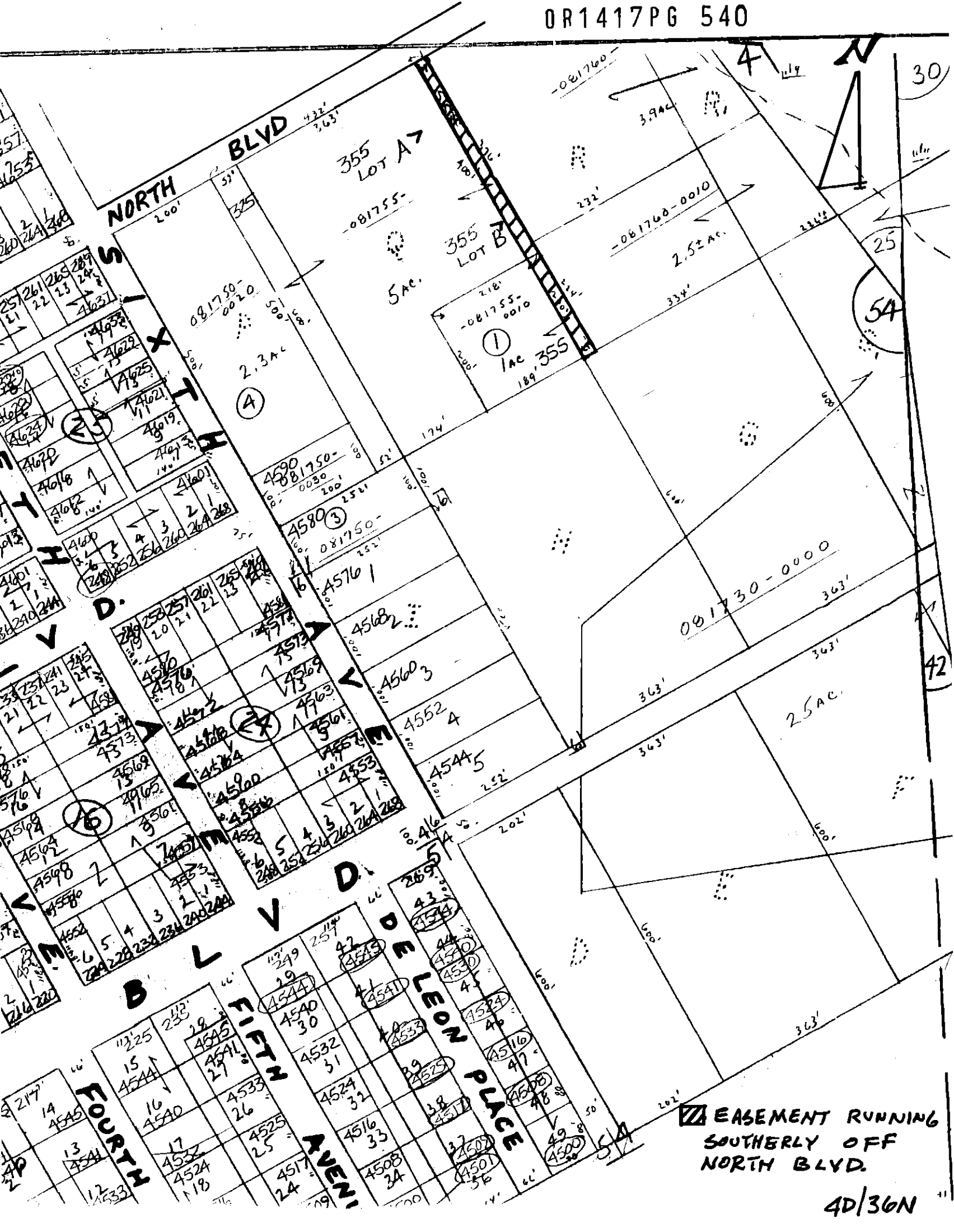
**BOARD OF COUNTY COMMISSIONERS  
OF ST. JOHNS COUNTY, FLORIDA**

By: Marc Jacalone  
Marc Jacalone, Chairman

**ATTEST:** Cheryl Strickland, Clerk

By: Juanne King  
Deputy Clerk

John P. Degrade  
BCC Secty  
- Bill Co -



NORTH

BLVD

355 LOT A

355 LOT B

081730-0000

2.5 AC.

EASEMENT RUNNING SOUTHERLY OFF NORTH BLVD.

4D/36N

Map contains numerous lot numbers (e.g., 4576, 4580, 4575, 4573, 4572, 4571, 4570, 4569, 4568, 4567, 4566, 4565, 4564, 4563, 4562, 4561, 4560, 4559, 4558, 4557, 4556, 4555, 4554, 4553, 4552, 4551, 4550, 4549, 4548, 4547, 4546, 4545, 4544, 4543, 4542, 4541, 4540, 4539, 4538, 4537, 4536, 4535, 4534, 4533, 4532, 4531, 4530, 4529, 4528, 4527, 4526, 4525, 4524, 4523, 4522, 4521, 4520, 4519, 4518, 4517, 4516, 4515, 4514, 4513, 4512, 4511, 4510, 4509, 4508, 4507, 4506, 4505, 4504, 4503, 4502, 4501, 4500), acreages (e.g., 2.3 AC., 2.5 AC., 5 AC.), and street names (FORT ST, ELM ST, PINE ST, AVENUE). It also features a north arrow, a scale bar, and a legend for an easement.