

RESOLUTION NO. 2000-119

A RESOLUTION OF ST. JOHNS COUNTY REQUESTING THE DIVISION OF LAW ENFORCEMENT, FLORIDA FISH AND WILDLIFE CONSERVATION COMMISSION TO ESTABLISH A RESTRICTED AREA DESIGNATION FOR A SPECIFIC SECTION OF THE INTRACOASTAL WATERWAY LOCATED IN ST. JOHNS COUNTY AND FURTHER THAT THE DEPARTMENT AUTHORIZE THE COUNTY TO INSTALL "SLOW SPEED/MINIMUM WAKE" REGULATORY MARKERS WITHIN THE RESTRICTED AREA.

WHEREAS, the State Division of Law Enforcement, Florida Fish and Wildlife Conservation Commission has the authority pursuant to Florida Statute 327.46 to establish by rule, restricted areas on the waterways of the State for purposes of promoting the safety of the public; and,

WHEREAS, the promoting of the public safety includes regulation of boat speeds and boat traffic where said restrictions are deemed necessary based on boating accidents, visibility, tides, congestion and other navigational hazards; and,

WHEREAS, the boat launching ramp at the Devil's Elbow Fish Camp is used to launch emergency vessels; and,

WHEREAS, the boat ramp area at the Devil's Elbow Fish Camp on the Intracoastal Waterway in St. Johns County exhibits characteristics deemed necessary to qualify for restricted area designation;

NOW, THEREFORE, BE IT RESOLVED this 12th day of September, 2000 by the Board of County Commissioners of St. Johns County, Florida, as follows:

Section 1. St. Johns County requests the Florida Division of Law Enforcement to designate a "Slow Speed/Minimum Wake" boating restricted area shore line to shore line, in and adjacent to the Florida Intracoastal Waterway, 500 feet north of the centerline of the Devil's Elbow launching ramp south to 500 feet south of the centerline of the Devil's Elbow launching ramp as depicted on Attachment "A".

Section 2. St. Johns County further requests authorization from the Division of Law Enforcement, Florida Fish and Game Commission to place "Slow Speed/Minimum Wake" regulatory markers at appropriate intervals along the designated restricted area.

Section 3. This resolution does not repeal, rescind, or affect any other St. Johns County resolution.

Section 4. The County Administrator, or his designee, is directed to deliver copies of this resolution, as required by Florida Statute Section 327.41, together with a county map locating the approximate placement of the markers, a statement of the specifications of the markers, a statement of the purpose of the markers, and a statement that the County will be responsible for the placement and upkeep of the markers to the Division of Law Enforcement, Florida Fish and Game Commission and other agencies as required.

Section 5. This resolution shall take effect immediately upon its adoption.

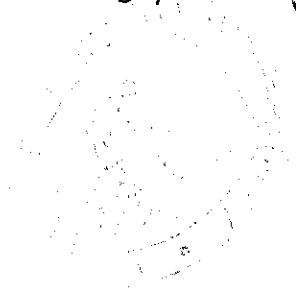
Passed and adopted by the Board of County Commissioners this date, September 12,
2000.

**BOARD OF COUNTY COMMISSIONERS
OF ST. JOHNS COUNTY, FLORIDA**

By: James E. Bryant
Its Chair

ATTEST: CHERYL STRICKLAND

Genora J. Newsome
Deputy Clerk

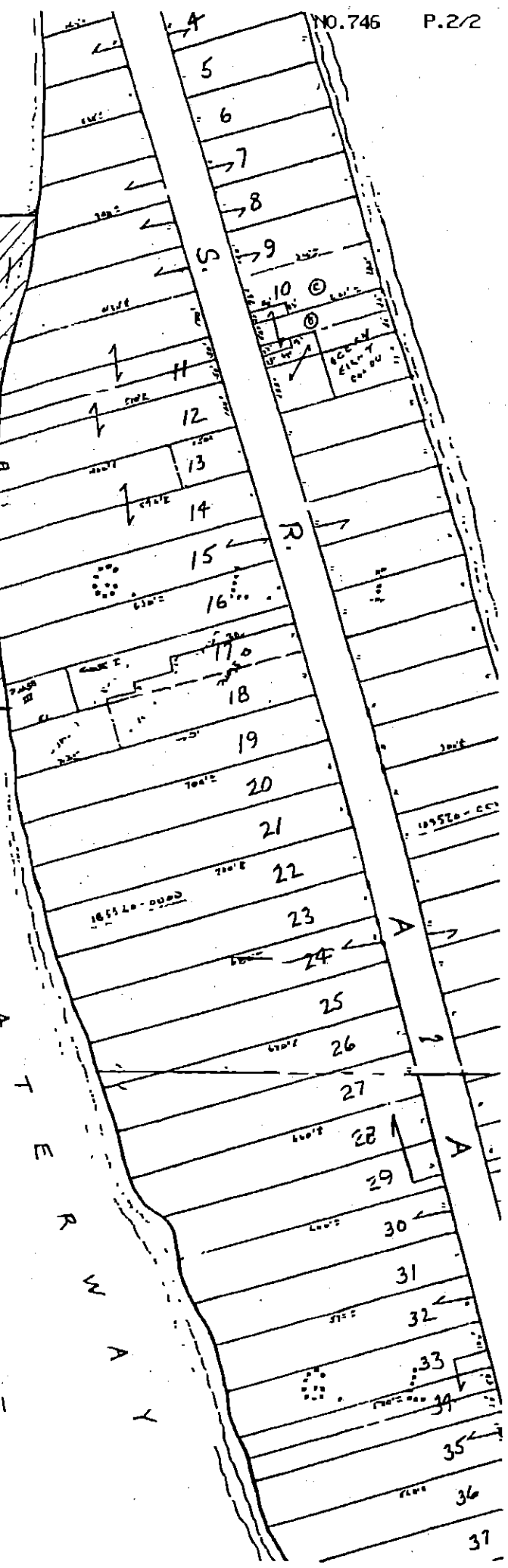
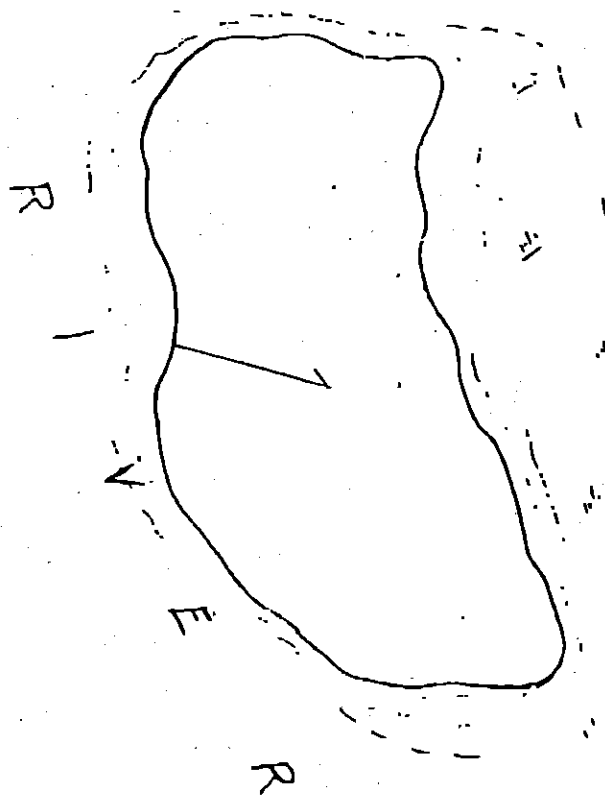
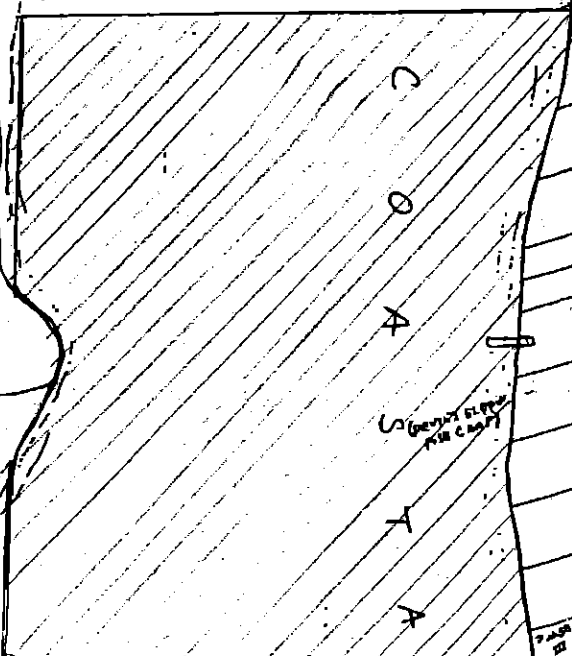


L
R
A

C
O
A
Y
A

L

M
A
T
E
R
N
A
Y



Attachment "A"