

RESOLUTION NO. 2000- 188
RESOLUTION OF THE BOARD OF COUNTY
COMMISSIONERS OF ST. JOHNS COUNTY,
FLORIDA APPROVING A SUBDIVISION
PLAT FOR PARKES OF JULINGTON CREEK
PLANTATION PHASE FIVE

WHEREAS, Julington Creek Development Corporation, a Florida Corporation, as Owner, has applied to the Board of County Commissioners of St. Johns County, Florida, for approval to record a subdivision plat known as Parkes of Julington Creek Plantation Phase Five

NOW, THEREFORE BE IT RESOLVED BY THE BOARD OF COUNTY COMMISSIONERS OF ST. JOHNS COUNTY, FLORIDA, as follows:

Section 1. The above-described subdivision plat and its dedicated areas depicted thereon are conditionally approved and accepted by the Board of County Commissioners of St. Johns County, Florida subject to Sections 2, 4, 5 and 6.

Section 2. A Construction Bond in the amount of \$119,662.05 has been filed with the Clerk of Courts.

Section 3. A Warranty Bond will be required in the amount of \$91,675.95

Section 4. The approval and acceptance described in Section 1 shall not take effect until the Clerk has received a title opinion, certificate, or policy pertaining to the real property that is the subject of the aforementioned subdivision plat which opinion, certificate or policy is in a form acceptable to the County Attorney or Assistant County Attorney.

Section 5. The approval and acceptance described in Section 1 shall not take effect until the plat has been signed by each of the following departments, person or offices:

- a) Chairman or Vice-Chairman of the Board of County Commissioners of St. Johns County,

Florida;

- b) Office of the County Attorney;
- c) County Planning and Zoning Department; and
- d) Clerk of Courts.
- e) Development Review Program

The Clerk shall not sign or accept the Plat for recording until it has been signed by each of the above persons or entities described in a) through c) and e) above. If the plat is not signed and accepted by the Clerk for recording within 14 days from the date hereof, then the above-described conditional approval shall automatically terminate. If the plat is signed by the Clerk on or before such time, the conditions described herein shall be deemed to have been met.

ADOPTED by the Board of County Commissioners of St. Johns County, Florida, this 12th day of December, 2000.

BOARD OF COUNTY COMMISSIONERS
OF ST. JOHNS COUNTY, FLORIDA

BY: Mary V. Kohnke
Mary Kohnke, Its Chair

ATTEST: Cheryl Strickland, Clerk

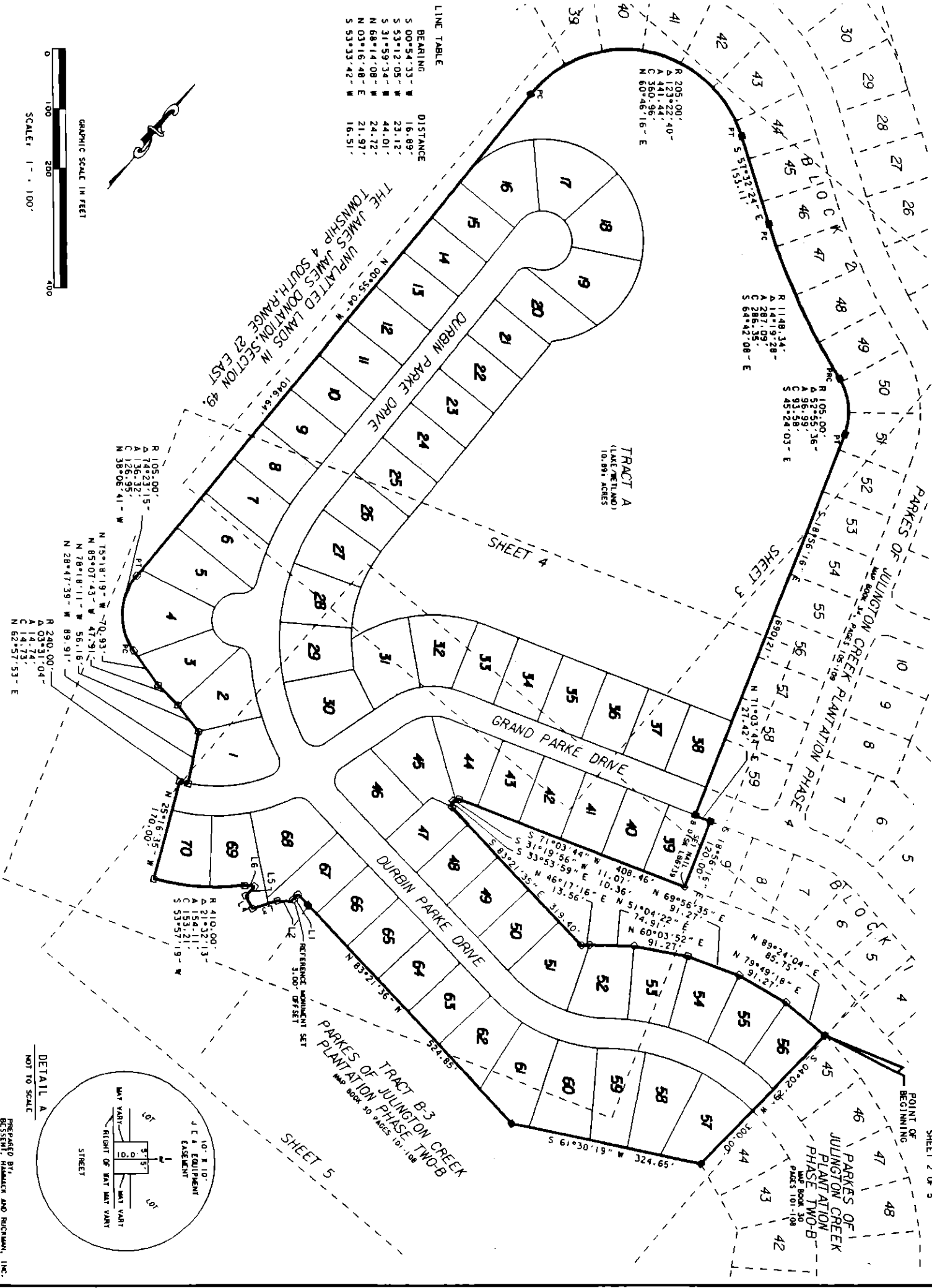
Patricia A. Grande
Deputy Clerk



PARKES OF JULINGTON CREEK PLANTATION PHASE FIVE

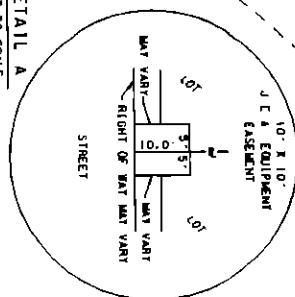
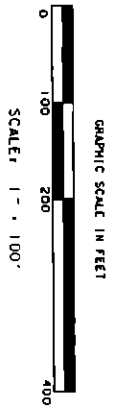
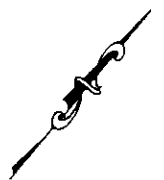
A PART OF THE JAMES JAMES DONATION, SECTION 49, TOWNSHIP 4 SOUTH, RANGE 21 EAST, ST. JOHNS COUNTY, FLORIDA.

SHEET 2 OF 5



LINE TABLE

BEARING	DISTANCE
S 00°54'33" W	16.89'
S 53°12'05" W	23.12'
S 31°59'34" W	44.01'
N 68°14'08" W	24.72'
N 03°16'48" E	21.97'
S 53°33'42" W	16.51'



PREPARED BY:
RESIDENTIAL ENGINEERING AND PLANNING, INC.
JACKSONVILLE, FLORIDA 32216