

RESOLUTION NO. 2000- 51
RESOLUTION OF THE BOARD OF COUNTY
COMMISSIONERS OF ST. JOHNS COUNTY, FLORIDA
APPROVING A SUBDIVISION PLAT FOR WALDEN CHASE
PHASE ONE

WHEREAS, Walden Chase Developers, Ltd., a Florida Corporation, as Owner, has applied to the Board of County Commissioners of St. Johns County, Florida, for approval to record a subdivision plat known as Walden Chase Phase One.

NOW, THEREFORE BE IT RESOLVED BY THE BOARD OF COUNTY COMMISSIONERS OF ST. JOHNS COUNTY, FLORIDA, as follows:

Section 1. The above-described subdivision plat and its dedicated areas depicted thereon are conditionally approved and accepted by the Board of County Commissioners of St. Johns County, Florida subject to Sections 2, 4, and 5.

Section 2. A Letter of Credit has been filed with the Clerk of Court for the funds necessary to complete the associated infrastructure.

Section 3. A Warranty Bond in the amount of \$460,965.00 will be required.

Section 4. The approval and acceptance described in Section 1 shall not take effect until the Clerk has received a title opinion, certificate, or policy pertaining to the real property that is the subject of the aforementioned subdivision plat which opinion, certificate or policy is in a form acceptable to the County Attorney or Assistant County Attorney.

Section 5. The approval and acceptance described in Section 1 shall not take effect until the plat has been signed by each of the following departments, person or offices:

- a) Chairman or Vice-Chairman of the Board of County Commissioners of St. Johns County, Florida;
- b) Office of the County Attorney;

- c) County Planning and Zoning Department;
- d) County Development Review Program; and
- e) Clerk of Courts.

The Clerk shall not sign or accept the Plat for recording until it has been signed by each of the above persons or entities described in a) through d) above. If the plat is not signed and accepted by the Clerk for recording within 14 days from the date hereof, then the above-described conditional approval shall automatically terminate. If the plat is signed by the Clerk on or before such time, the conditions described herein shall be deemed to have been met.

ADOPTED by the Board of County Commissioners of St. Johns County, Florida, this 18th
day of April, 2000.

BOARD OF COUNTY COMMISSIONERS
OF ST. JOHNS COUNTY, FLORIDA

BY: James E. Bryant
James E. Bryant, Its Chair

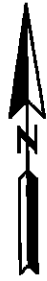
ATTEST: Cheryl Strickland

Yvonne King
Deputy Clerk

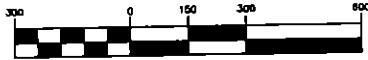
Walden Chase Phase One

A PART OF SECTIONS 1, 2, AND 11, TOWNSHIP 5 SOUTH,
RANGE 28 EAST, ST. JOHNS COUNTY, FLORIDA

KEY MAP

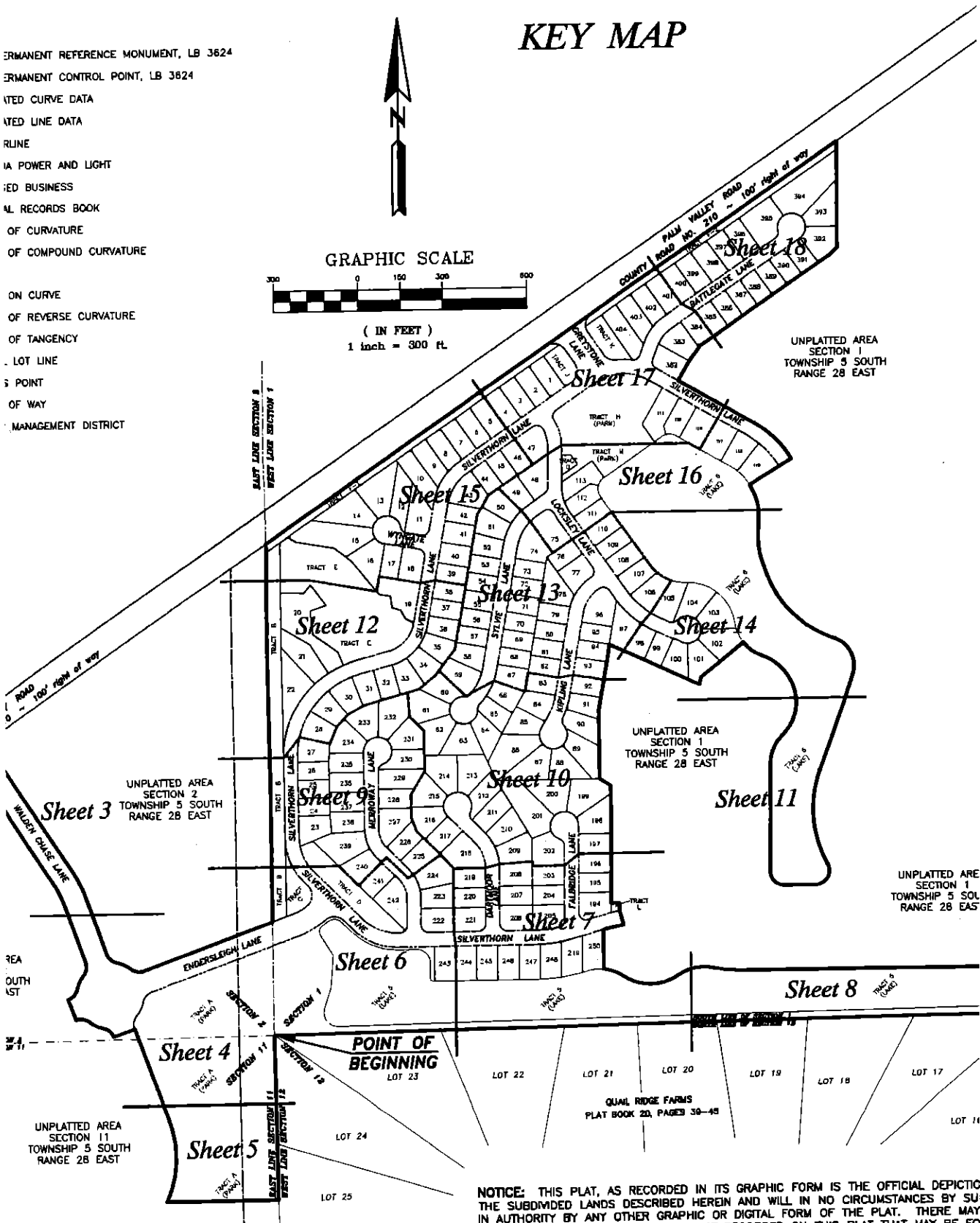


GRAPHIC SCALE



(IN FEET)
1 inch = 300 ft.

- PERMANENT REFERENCE MONUMENT, LB 3624
- PERMANENT CONTROL POINT, LB 3624
- PLATTED CURVE DATA
- PLATTED LINE DATA
- PLAT LINE
- PLAT POWER AND LIGHT
- PLAT BUSINESS
- PLAT RECORDS BOOK
- PLAT OF CURVATURE
- PLAT OF COMPOUND CURVATURE
- PLAT ON CURVE
- PLAT OF REVERSE CURVATURE
- PLAT OF TANGENCY
- PLAT LOT LINE
- PLAT POINT
- PLAT OF WAY
- PLAT MANAGEMENT DISTRICT



NOTICE: THIS PLAT, AS RECORDED IN ITS GRAPHIC FORM IS THE OFFICIAL DEPICTION OF THE SUBDIVIDED LANDS DESCRIBED HEREIN AND WILL IN NO CIRCUMSTANCES BE SUPERSEDED BY ANY OTHER GRAPHIC OR DIGITAL FORM OF THE PLAT. THERE MAY BE ADDITIONAL RESTRICTIONS THAT ARE NOT RECORDED ON THIS PLAT THAT MAY BE FOUND IN THE PUBLIC RECORDS OF THIS COUNTY.