

RESOLUTION NO. 2000- 86
RESOLUTION OF THE BOARD OF COUNTY
COMMISSIONERS OF ST. JOHNS COUNTY,
FLORIDA APPROVING A SUBDIVISION
PLAT FOR JULINGTON CREEK
PLANTATION PARCEL 55 PHASE 1

WHEREAS, Julington Partners Limited Partnership, a Delaware Limited Partnership, as Owner, has applied to the Board of County Commissioners of St. Johns County, Florida, for approval to record a subdivision plat known as Julington Creek Plantation Parcel 55 Phase 1

NOW, THEREFORE BE IT RESOLVED BY THE BOARD OF COUNTY COMMISSIONERS OF ST. JOHNS COUNTY, FLORIDA, as follows:

Section 1. The above-described subdivision plat and its dedicated areas depicted thereon are conditionally approved and accepted by the Board of County Commissioners of St. Johns County, Florida subject to Sections 2, 4, 5 and 6.

Section 2. A Construction Bond in the amount of \$185,844.95 has been filed with the Clerk of Courts.

Section 3. A Warranty Bond will be required in the amount of \$62,476.05

Section 4. The approval and acceptance described in Section 1 shall not take effect until the Clerk has received a title opinion, certificate, or policy pertaining to the real property that is the subject of the aforementioned subdivision plat which opinion, certificate or policy is in a form acceptable to the County Attorney or Assistant County Attorney.

Section 5. The approval and acceptance described in Section 1 shall not take effect until the plat has been signed by each of the following departments, person or offices:

- a) Chairman or Vice-Chairman of the Board of County Commissioners of St. Johns County,

Florida;

- b) Office of the County Attorney;
- c) County Planning and Zoning Department; and
- d) Clerk of Courts.
- e) Development Review Program

The Clerk shall not sign or accept the Plat for recording until it has been signed by each of the above persons or entities described in a) through c) and e) above. If the plat is not signed and accepted by the Clerk for recording within 14 days from the date hereof, then the above-described conditional approval shall automatically terminate. If the plat is signed by the Clerk on or before such time, the conditions described herein shall be deemed to have been met.

ADOPTED by the Board of County Commissioners of St. Johns County, Florida, this 13th day of June, 2000.

BOARD OF COUNTY COMMISSIONERS
OF ST. JOHNS COUNTY, FLORIDA

BY: James E. Bryant
James E. Bryant, Its Chair

ATTEST: Cheryl Strickland, Clerk

Patricia A. Grande
Deputy Clerk

ADDITIONAL R/W FOR RACETRACK ROAD
ADDITIONAL R/W ON THE FLAT ORA BRANCH N/EWARD

ADDITIONAL R/W AND EXTENSIONS LOTS 40-47

PLANTATION PHASE 1 PAGES 51-56

TRACT T-5 (OPEN SPACE)
OAKWOOD BRANCH DRIVE
TRACT T-3 (OPEN SPACE)
OAKWOOD BRANCH DRIVE

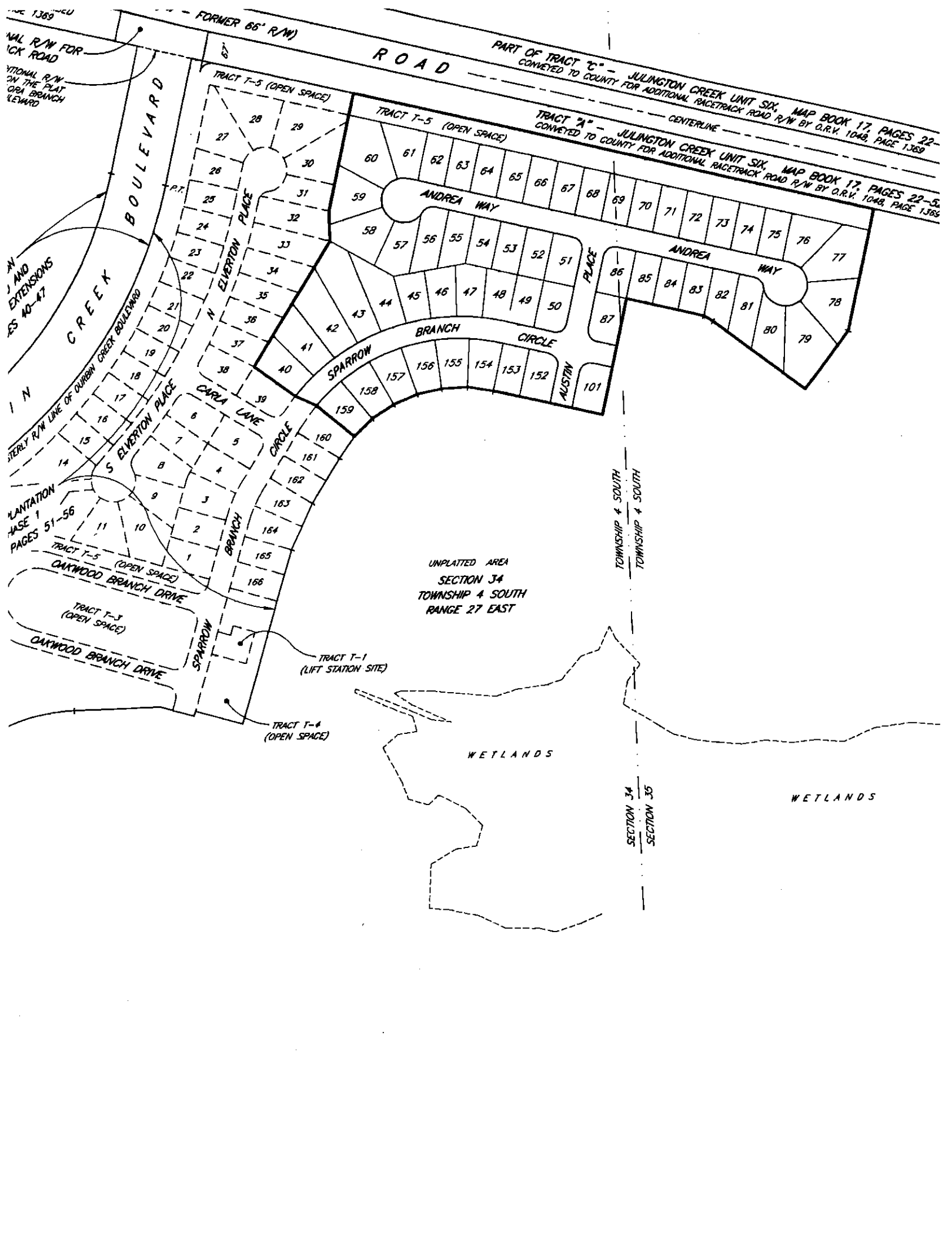
TRACT T-1 (LIFT STATION SITE)
TRACT T-4 (OPEN SPACE)

FORMER 66' R/W

ROAD

PART OF TRACT "C" - JULINGTON CREEK UNIT SIX, MAP BOOK 17, PAGES 22-5, CONVEYED TO COUNTY FOR ADDITIONAL RACETRACK ROAD R/W BY O.R.V. 1048, PAGE 1369

TRACT "A" - JULINGTON CREEK UNIT SIX, MAP BOOK 17, PAGES 22-5, CONVEYED TO COUNTY FOR ADDITIONAL RACETRACK ROAD R/W BY O.R.V. 1048, PAGE 1369



UNPLATTED AREA
SECTION 34
TOWNSHIP 4 SOUTH
RANGE 27 EAST

WETLANDS

WETLANDS

TOWNSHIP 4 SOUTH
TOWNSHIP 4 SOUTH

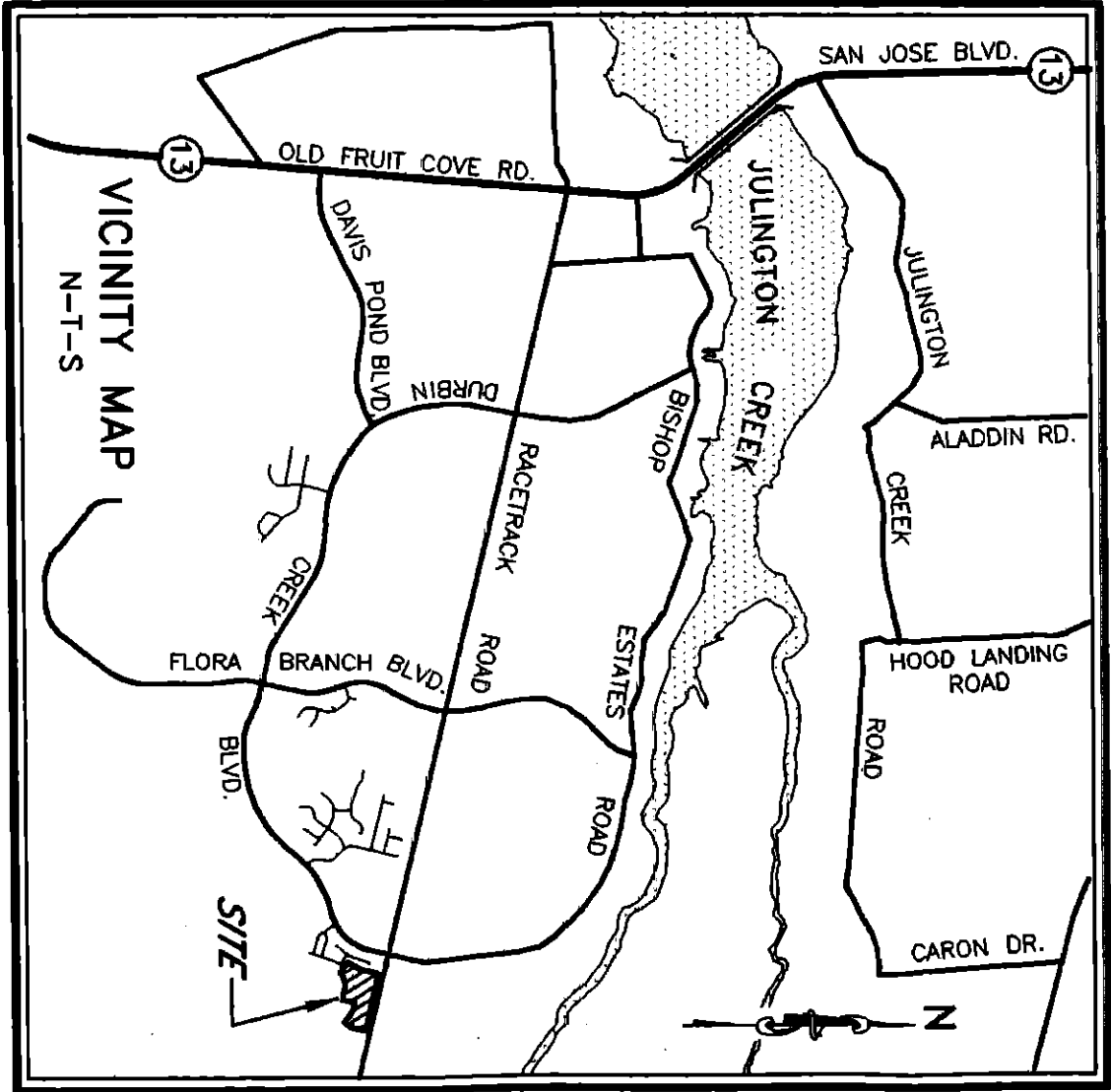
SECTION 34
SECTION 35



RANGE 27 EAST
RANGE 27 EAST

EAST
No.

OF TRACT 20 - JULINGTON CREEK UNIT SIX, MAP NO. 10
SUBMITTED TO COUNTY FOR ADDITIONAL RACETRACK ROAD P.A.S.
TRACT 20 - JULINGTON CREEK UNIT SIX, MAP NO. 10



VICINITY MAP
N-T-S

