

RESOLUTION NO. 2001- 201
RESOLUTION OF THE BOARD OF COUNTY
COMMISSIONERS OF ST. JOHNS COUNTY, FLORIDA
APPROVING A SUBDIVISION PLAT FOR
JULINGTON CREEK PLANTATION PARCEL 67

WHEREAS, JULINGTON PARTNERS LIMITED PARTNERSHIP, have applied to the Board of County Commissioners of St. Johns County, Florida for approval to record a subdivision plat known as Julington Creek Plantation Parcel 67.

NOW, THEREFORE BE IT RESOLVED BY THE BOARD OF COUNTY COMMISSIONERS OF ST. JOHNS COUNTY, FLORIDA, as follows:

Section 1. The above-described subdivision plat and its dedicated areas depicted thereon are conditionally approved and accepted by the Board of County Commissioners of St. Johns County, Florida subject to Sections 2, 3, 4, and 5.

Section 2. A Letter of Credit has been filed with the Clerk of Courts in the amount of \$246,332.90.

Section 3. A Maintenance Bond in the amount of \$74,700.90 will be required.

Section 4. The approval and acceptance described in Section 1 shall not take effect until the Clerk has received a title opinion, certificate, or policy pertaining to the real property that is the subject of the aforementioned subdivision plat which opinion, certificate or policy is in a form acceptable to the County Attorney or Assistant County Attorney.

Section 5. The approval and acceptance described in Section 1 shall not take effect until the plat has been signed by each of the following departments, person or offices:

- a) Chairman or Vice-Chairman of the Board of County Commissioners of St. Johns County, Florida;
- b) Office of the County Attorney;
- c) County Planning and Zoning Department;
- d) County Development Review Program; and
- e) Clerk of Courts.

The Clerk shall not sign or accept the Plat for recording until it has been signed by each of the above persons or entities described in a) through d) above. If the plat is not signed and accepted by the Clerk for recording within 14 days from the date hereof, then the above-described conditional approval shall automatically terminate. If the plat is signed by the Clerk on or before such time, the conditions described herein shall be deemed to have been met.

ADOPTED by the Board of County Commissioners of St. Johns County, Florida, this 23rd day of October, 2001.

BOARD OF COUNTY COMMISSIONERS
OF ST. JOHNS COUNTY, FLORIDA

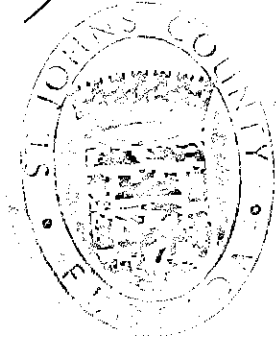
BY: Marc A. Jacalone
Marc A. Jacalone, Its Chair

Rendition date: 10-25-01

ATTEST: Cheryl Strickland

Cheryl Strickland

Deputy Clerk



JULINGTON CREEK PLANTATION PARCEL 67

(NOT PART OF RECORD PLAT - FOR TAX ASSESSOR'S USE ONLY)

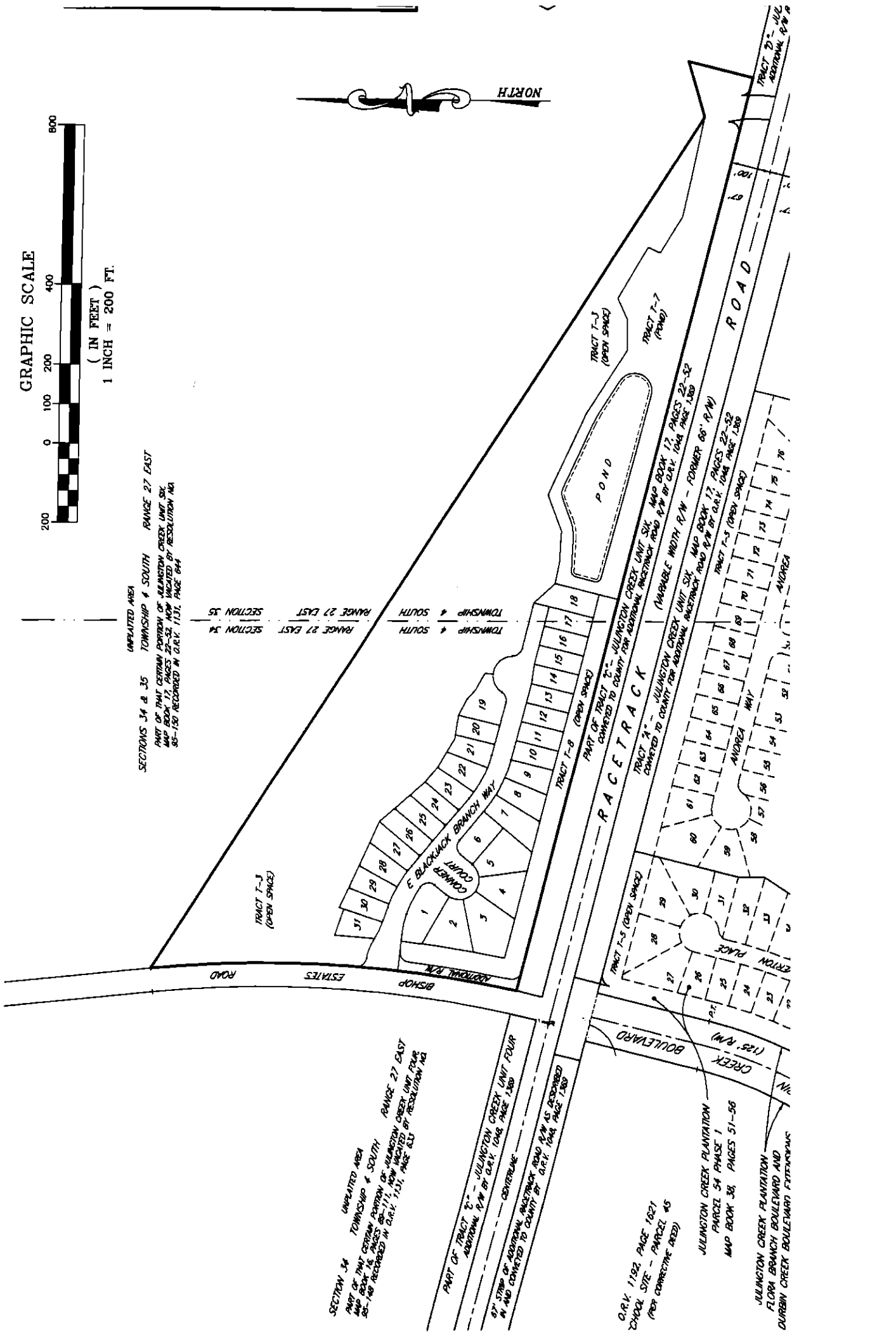
GRAPHIC SCALE



UNPLATTED AREA
 SECTIONS 34 & 35 TOWNSHIP 4 SOUTH RANGE 27 EAST
 PART OF THAT CERTAIN PORTION OF JULINGTON CREEK UNIT SIX
 MAP BOOK 17, PAGES 22-32, NOW VACATED BY RESOLUTION NO.
 88-150 RECORDED IN O.R.V. 1131, PAGE 644

SECTION 34
 RANGE 27 EAST
 TOWNSHIP 4 SOUTH

SECTION 35
 RANGE 27 EAST
 TOWNSHIP 4 SOUTH



SECTION 34 TOWNSHIP 4 SOUTH RANGE 27 EAST
 PART OF THAT CERTAIN PORTION OF JULINGTON CREEK UNIT FOUR
 MAP BOOK 14, PAGES 88-91, NOW VACATED BY RESOLUTION NO.
 88-149 RECORDED IN O.R.V. 1131, PAGE 631

PART OF TRACT T-2 - JULINGTON CREEK UNIT FOUR
 ADDITIONAL R/W BY O.R.V. 1044, PAGE 1280
 CONVERTED TO COUNTY
 87' STRIP OF ADDITIONAL BACKLACK ROAD R/W AS ORDERED
 IN AND CONVERTED TO COUNTY BY O.R.V. 1044, PAGE 1280

O.R.V. 1192 PAGE 1821
 SCHOOL SITE - PARCEL 45
 (PER CORRECTIVE ORDER)

JULINGTON CREEK PLANTATION
 PARCEL 54 PHASE 1
 MAP BOOK 38, PAGES 51-56

JULINGTON CREEK PLANTATION
 FLORA BRANCH BOULEVARD AND
 CURBIN CREEK BOULEVARD EXTENSIONS