

RESOLUTION NO. 2001- 238
RESOLUTION OF THE BOARD OF COUNTY
COMMISSIONERS OF ST. JOHNS COUNTY,
FLORIDA APPROVING A SUBDIVISION
PLAT FOR ST. AUGUSTINE INDUSTRIAL PARK
PHASE 3

WHEREAS, St. Augustine Industrial Development Corporation, a Florida Corporation and Deer Park Investment Corporation, a Florida Corporation, as Owners, have applied to the Board of County Commissioners of St. Johns County, Florida, for approval to record a subdivision plat known as St. Augustine Industrial Park Phase 3

NOW, THEREFORE BE IT RESOLVED BY THE BOARD OF COUNTY COMMISSIONERS OF ST. JOHNS COUNTY, FLORIDA, as follows:

Section 1. The above-described subdivision plat and its dedicated areas depicted thereon are conditionally approved and accepted by the Board of County Commissioners of St. Johns County, Florida subject to Sections 2, 4, 5 and 6.

Section 2. A Construction Bond in the amount of \$1,159,580.00 has been filed with the Clerk of Courts.

Section 3. A Warranty Bond will be required in the amount of \$151,250.00.

Section 4. The approval and acceptance described in Section 1 shall not take effect until the Clerk has received a title opinion, certificate, or policy pertaining to the real property that is the subject of the aforementioned subdivision plat which opinion, certificate or policy is in a form acceptable to the County Attorney or Assistant County Attorney.

Section 5. The approval and acceptance described in Section 1 shall not take effect until the plat has been signed by each of the following departments, person or offices:

- a) Chairman or Vice-Chairman of the Board of County Commissioners of St. Johns County, Florida;
- b) Office of the County Attorney;
- c) County Planning and Zoning Department; and
- d) Clerk of Courts.
- e) Office of the County Surveyor

The Clerk shall not sign or accept the Plat for recording until it has been signed by each of the above persons or entities described in a) through c) and e) above. If the plat is not signed and accepted by the Clerk for recording within 14 days from the date hereof, then the above-described conditional approval shall automatically terminate. If the plat is signed by the Clerk on or before such time, the conditions described herein shall be deemed to have been met.

ADOPTED by the Board of County Commissioners of St. Johns County, Florida, this 11th day of December, 2001.

BOARD OF COUNTY COMMISSIONERS
OF ST. JOHNS COUNTY, FLORIDA

BY: Marc A. Jacalone
Marc A. Jacalone, Its Chair

ATTEST: Cheryl Strickland, Clerk

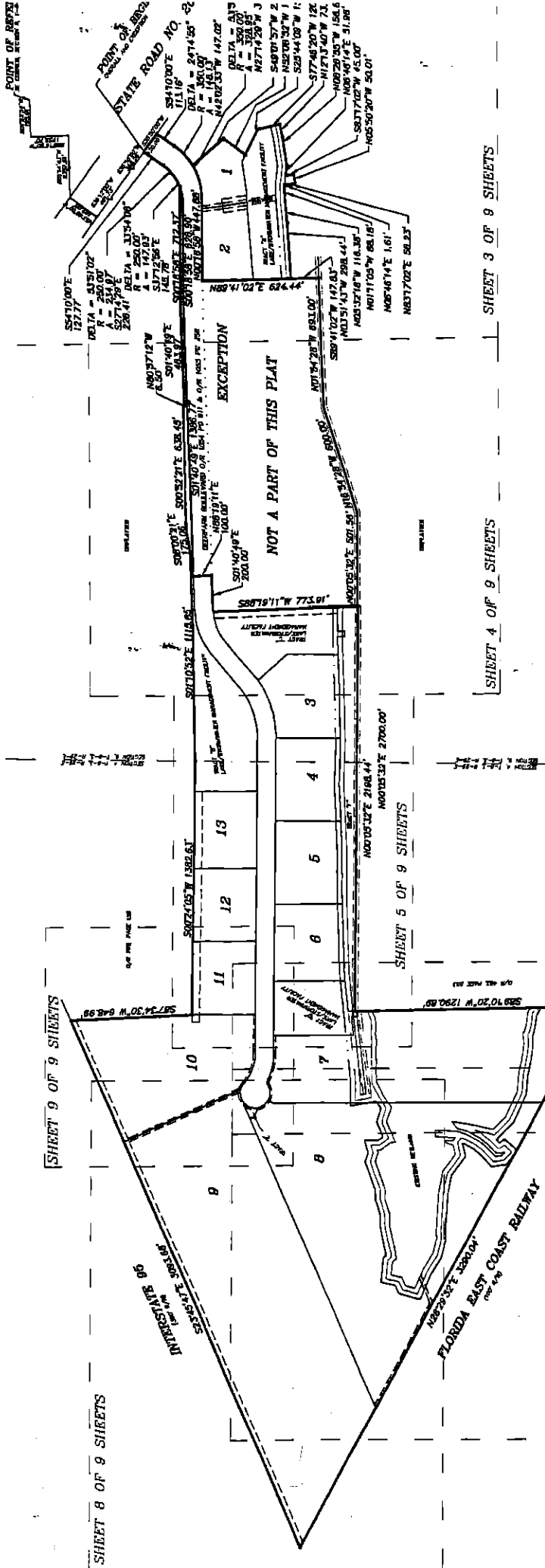
Patricia Reynolds
Deputy Clerk

RENDITION DATE 12-13-01



St. Augustine Industrial Park Phase 3

A PORTION OF SECTIONS 4 AND 9, TOWNSHIP 8 SOUTH, RANGE 80 EAST, ST. JOHNS COUNTY, FLORIDA



SHEET 8 OF 9 SHEETS

SHEET 9 OF 9 SHEETS

SHEET 10 OF 9 SHEETS

SHEET 11 OF 9 SHEETS

SHEET 12 OF 9 SHEETS

SHEET 13 OF 9 SHEETS

SHEET 14 OF 9 SHEETS

SHEET 15 OF 9 SHEETS

SHEET 16 OF 9 SHEETS

SHEET 17 OF 9 SHEETS

SHEET 18 OF 9 SHEETS

SHEET 19 OF 9 SHEETS

SHEET 20 OF 9 SHEETS

SHEET 21 OF 9 SHEETS

SHEET 22 OF 9 SHEETS

SHEET 23 OF 9 SHEETS

SHEET 24 OF 9 SHEETS

SHEET 25 OF 9 SHEETS

SHEET 26 OF 9 SHEETS

SHEET 27 OF 9 SHEETS

SHEET 28 OF 9 SHEETS

SHEET 29 OF 9 SHEETS

SHEET 30 OF 9 SHEETS

SHEET 31 OF 9 SHEETS

SHEET 32 OF 9 SHEETS

SHEET 33 OF 9 SHEETS

SHEET 34 OF 9 SHEETS

SHEET 35 OF 9 SHEETS

SHEET 36 OF 9 SHEETS

SHEET 37 OF 9 SHEETS

SHEET 38 OF 9 SHEETS

SHEET 39 OF 9 SHEETS

SHEET 40 OF 9 SHEETS

SHEET 41 OF 9 SHEETS

SHEET 42 OF 9 SHEETS

SHEET 43 OF 9 SHEETS

SHEET 44 OF 9 SHEETS

SHEET 45 OF 9 SHEETS

SHEET 46 OF 9 SHEETS

SHEET 47 OF 9 SHEETS

SHEET 48 OF 9 SHEETS

SHEET 49 OF 9 SHEETS

SHEET 50 OF 9 SHEETS

SHEET 51 OF 9 SHEETS

SHEET 52 OF 9 SHEETS

SHEET 53 OF 9 SHEETS

SHEET 54 OF 9 SHEETS

SHEET 55 OF 9 SHEETS

SHEET 56 OF 9 SHEETS

SHEET 57 OF 9 SHEETS

SHEET 58 OF 9 SHEETS

SHEET 59 OF 9 SHEETS

SHEET 60 OF 9 SHEETS

SHEET 61 OF 9 SHEETS

SHEET 62 OF 9 SHEETS

SHEET 63 OF 9 SHEETS

SHEET 64 OF 9 SHEETS

SHEET 65 OF 9 SHEETS

SHEET 66 OF 9 SHEETS

SHEET 67 OF 9 SHEETS

SHEET 68 OF 9 SHEETS

SHEET 69 OF 9 SHEETS

SHEET 70 OF 9 SHEETS

SHEET 71 OF 9 SHEETS

SHEET 72 OF 9 SHEETS

SHEET 73 OF 9 SHEETS

SHEET 74 OF 9 SHEETS

SHEET 75 OF 9 SHEETS

SHEET 76 OF 9 SHEETS

SHEET 77 OF 9 SHEETS

SHEET 78 OF 9 SHEETS

SHEET 79 OF 9 SHEETS

SHEET 80 OF 9 SHEETS

SHEET 81 OF 9 SHEETS

SHEET 82 OF 9 SHEETS

SHEET 83 OF 9 SHEETS

SHEET 84 OF 9 SHEETS

SHEET 85 OF 9 SHEETS

SHEET 86 OF 9 SHEETS

SHEET 87 OF 9 SHEETS

SHEET 88 OF 9 SHEETS

SHEET 89 OF 9 SHEETS

SHEET 90 OF 9 SHEETS

SHEET 91 OF 9 SHEETS

SHEET 92 OF 9 SHEETS

SHEET 93 OF 9 SHEETS

SHEET 94 OF 9 SHEETS

SHEET 95 OF 9 SHEETS

SHEET 96 OF 9 SHEETS

SHEET 97 OF 9 SHEETS

SHEET 98 OF 9 SHEETS

SHEET 99 OF 9 SHEETS

SHEET 100 OF 9 SHEETS

