

RESOLUTION NO. 2001- 47
RESOLUTION OF THE BOARD OF COUNTY
COMMISSIONERS OF ST. JOHNS COUNTY, FLORIDA
APPROVING A SUBDIVISION PLAT FOR
JULINGTON CREEK PLANTATION PARCEL 53 PHASE I

WHEREAS, JULINGTON PARTNERS LIMITED PARTNERSHIP, a Delaware limited Partnership, has applied to the Board of County Commissioners of St. Johns County, Florida for approval to record a subdivision plat known as Julington Creek Plantation Parcel 53 Phase I.

NOW, THEREFORE BE IT RESOLVED BY THE BOARD OF COUNTY COMMISSIONERS OF ST. JOHNS COUNTY, FLORIDA, as follows:

Section 1. The above-described subdivision plat and its dedicated areas depicted thereon are conditionally approved and accepted by the Board of County Commissioners of St. Johns County, Florida subject to Sections 2, 4, and 5.

Section 2. A Construction Bond has been filed with the Clerk of Court in the amount of \$503,010.74.

Section 3. A Maintenance Bond in the amount of \$ 141,542.25 will be required.

Section 4. The approval and acceptance described in Section 1 shall not take effect until the Clerk has received a title opinion, certificate, or policy pertaining to the real property that is the subject of the aforementioned subdivision plat which opinion, certificate or policy is in a form acceptable to the County Attorney or Assistant County Attorney.

Section 5. The approval and acceptance described in Section 1 shall not take effect until the plat has been signed by each of the following departments, person or offices:

- a) Chairman or Vice-Chairman of the Board of County Commissioners of St. Johns County, Florida;
- b) Office of the County Attorney;

- c) County Planning and Zoning Department;
- d) County Development Review Program; and
- e) Clerk of Courts.

The Clerk shall not sign or accept the Plat for recording until it has been signed by each of the above persons or entities described in a) through d) above. If the plat is not signed and accepted by the Clerk for recording within 14 days from the date hereof, then the above-described conditional approval shall automatically terminate. If the plat is signed by the Clerk on or before such time, the conditions described herein shall be deemed to have been met.

ADOPTED by the Board of County Commissioners of St. Johns County, Florida, this 20th day of March, 2001.

BOARD OF COUNTY COMMISSIONERS
OF ST. JOHNS COUNTY, FLORIDA

BY: Mary F. Kohnke
Mary F. Kohnke, Its Chair

ATTEST: Cheryl Strickland

Patricia De Grande
Deputy Clerk



JULINGTON CREEK PLANTATION PARCEL 53 PHASE 1

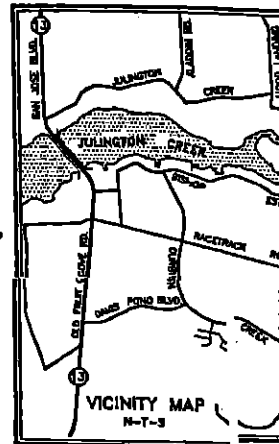
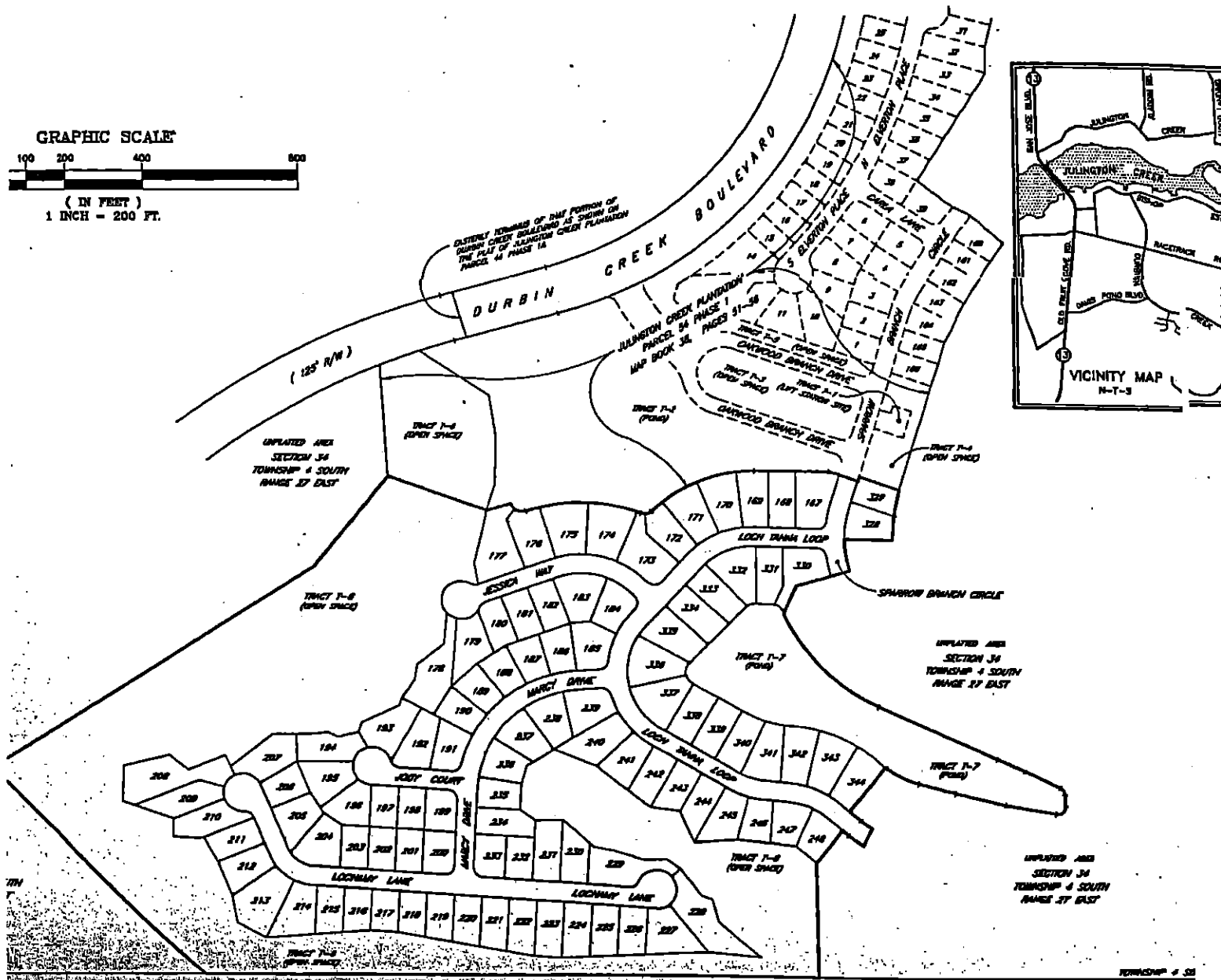
PART OF SECTION 34 TOWNSHIP 4 SOUTH RANGE 27 EAST
 ST. JOHNS COUNTY FLORIDA

GRAPHIC SCALE



(IN FEET)
 1 INCH = 200 FT.

WESTERN PORTION OF THIS PORTION OF
 DURBIN CREEK BOULEVARD AS SHOWN ON
 THE PLAN OF JULINGTON CREEK PLANTATION
 PARCEL 44 PHASE 1A



TOWNSHIP 4 S
 RANGE 27 E