

RESOLUTION NO. 2002- 10
RESOLUTION OF THE BOARD OF COUNTY
COMMISSIONERS OF ST. JOHNS COUNTY, FLORIDA
APPROVING A SUBDIVISION PLAT FOR
JULINGTON CREEK PLANTATION PARCELS 83 PHASE 2 AND 66

WHEREAS, JULINGTON PARTNERS LIMITED PARTNERSHIP, a Delaware Limited Partnership, has applied to the Board of County Commissioners of St. Johns County, Florida for approval to record a subdivision plat known as Julington Creek Plantation Parcels 83 Phase 2 and 66.

NOW, THEREFORE BE IT RESOLVED BY THE BOARD OF COUNTY COMMISSIONERS OF ST. JOHNS COUNTY, FLORIDA, as follows:

Section 1. The above-described subdivision plat and its dedicated areas depicted thereon are conditionally approved and accepted by the Board of County Commissioners of St. Johns County, Florida subject to Sections 2, 3, 4 and 5.

Section 2. A Construction Bond has been filed with the Clerk Of Courts in the amount of \$935,559.27.

Section 3. A Maintenance Bond in the amount of \$247,966.20 will be required.

Section 4. The approval and acceptance described in Section 1 shall not take effect until the Clerk has received a title opinion, certificate, or policy pertaining to the real property that is the subject of the aforementioned subdivision plat which opinion, certificate or policy is in a form acceptable to the County Attorney or Assistant County Attorney.

Section 5. The approval and acceptance described in Section 1 shall not take effect until the plat has been signed by each of the following departments, person or offices:

- a) Chairman or Vice-Chairman of the Board of County Commissioners of St. Johns County, Florida;
- b) Office of the County Attorney;

- c) County Planning and Zoning Department;
- d) Office of the County Surveyor; and
- e) Clerk of Courts.

The Clerk shall not sign or accept the Plat for recording until it has been signed by each of the above persons or entities described in a) through d) above. If the plat is not signed and accepted by the Clerk for recording within 14 days from the date hereof, then the above-described conditional approval shall automatically terminate. If the plat is signed by the Clerk on or before such time, the conditions described herein shall be deemed to have been met.

ADOPTED by the Board of County Commissioners of St. Johns County, Florida, this 22nd day of January, 2002.

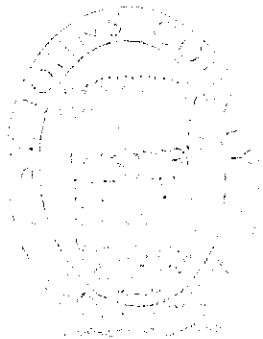
BOARD OF COUNTY COMMISSIONERS
OF ST. JOHNS COUNTY, FLORIDA

BY: Marc A. Jacalone
Marc A. Jacalone, Its Chair

ATTEST: Cheryl Strickland

Cheryl Strickland
Deputy Clerk

RENDITION DATE 01-24-02



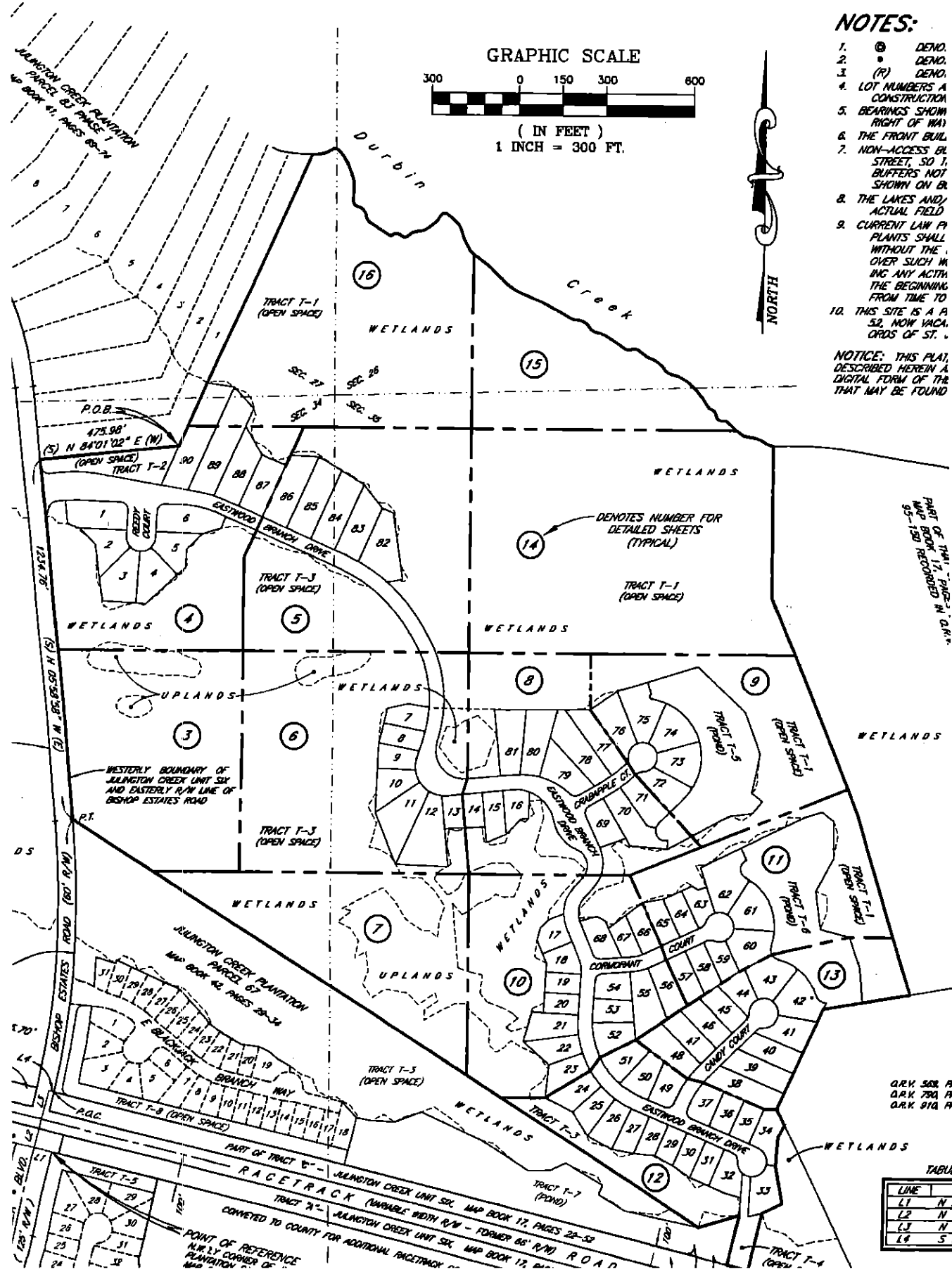
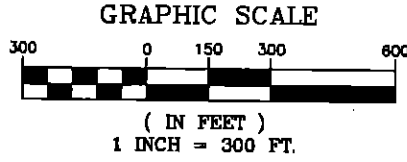
JULINGTON CREEK PLANTATION PARCELS 83 PHASE 2 AND 66

PART OF SECTIONS 26, 27, 34, & 35 TOWNSHIP 4 SOUTH RANGE 27 EAST
ST. JOHNS COUNTY FLORIDA

NOTES:

1. (C) DEMO.
2. (D) DEMO.
3. (P) DEMO.
4. LOT NUMBERS A CONSTRUCTION
5. BEARINGS SHOW RIGHT OF WAY
6. THE FRONT BUIL
7. NON-ACCESS BL STREET, SO I, BUFFERS NOT SHOWN ON BR
8. THE LAKES AND ACTUAL FIELD
9. CURRENT LAW P PLANTS SHALL WITHOUT THE OVER SUCH W ING ANY ACTH THE BEGINNING FROM TIME TO
10. THIS SITE IS A P 52, NOW VACA, CROS OF ST. .

NOTICE: THIS PLAN DESCRIBED HEREIN A DIGITAL FORM OF THE THAT MAY BE FOUND



PART OF TRACT T-1, PHASE 2, D.R.P. MAP BOOK 11, PAGES 95-100 RECORDED IN D.R.P.

ARK 308 A
ARK 790 A
ARK 914 A

TABLE

LINE	
L1	N
L2	N
L3	N
L4	S