

RESOLUTION NO. 2002- 11
RESOLUTION OF THE BOARD OF COUNTY
COMMISSIONERS OF ST. JOHNS COUNTY, FLORIDA
APPROVING A SUBDIVISION PLAT FOR
JULINGTON CREEK PLANTATION PARCEL 68

WHEREAS, JULINGTON PARTNERS LIMITED PARTNERSHIP, a Delaware limited Partnership, has applied to the Board of County Commissioners of St. Johns County, Florida for approval to record a subdivision plat known as
Julington Creek Plantation Parcel 68

NOW, THEREFORE BE IT RESOLVED BY THE BOARD OF COUNTY COMMISSIONERS OF ST. JOHNS COUNTY, FLORIDA, as follows:

Section 1. The above-described subdivision plat and its dedicated areas depicted thereon are conditionally approved and accepted by the Board of County Commissioners of St. Johns County, Florida subject to Sections 2, 3, 4 and 5.

Section 2. A Letter of Credit has been filed with the Clerk of Court in the amount of \$668,883.15.

Section 3. A Maintenance Bond in the amount of \$ 196,244.10 will be required.

Section 4. The approval and acceptance described in Section 1 shall not take effect until the Clerk has received a title opinion, certificate, or policy pertaining to the real property that is the subject of the aforementioned subdivision plat which opinion, certificate or policy is in a form acceptable to the County Attorney or Assistant County Attorney.

Section 5. The approval and acceptance described in Section 1 shall not take effect until the plat has been signed by each of the following departments, person or offices:

- a) Chairman or Vice-Chairman of the Board of County Commissioners of St. Johns County, Florida;
- b) Office of the County Attorney;

- c) County Planning and Zoning Department;
- d) Office of the County Surveyor; and
- e) Clerk of Courts.

The Clerk shall not sign or accept the Plat for recording until it has been signed by each of the above persons or entities described in a) through d) above. If the plat is not signed and accepted by the Clerk for recording within 14 days from the date hereof, then the above-described conditional approval shall automatically terminate. If the plat is signed by the Clerk on or before such time, the conditions described herein shall be deemed to have been met.

ADOPTED by the Board of County Commissioners of St. Johns County, Florida, this 22nd day of January, 2002.

BOARD OF COUNTY COMMISSIONERS
OF ST. JOHNS COUNTY, FLORIDA

BY: Marc Jacalone
Marc. A. Jacalone, Its Chair

ATTEST: Cheryl Strickland

Patricia Alex Seade
Deputy Clerk

RENDITION DATE 01-24-02



TRACT T-5
(OPEN SPACE)

TRACT T-6
(OPEN SPACE)

TRACT T-6
(OPEN SPACE)

TRACT T-6
(OPEN SPACE)

TRACT T-6
(OPEN SPACE)

SECTION 34
UNPLATTED AREA
PART OF TWP 27N R. 14E S. 34
MAP BOOK 15, PAGE 89-111
90-148 RECORDED IN CLERK 1, 151, PAGE 43

TRACT 3^a - JULINGTON CREEK UNIT FOUR
CONVERTED TO COUNTY FOR ADDITIONAL P.W. BY CLERK 1048 PAGE 1389
CENTRELINE

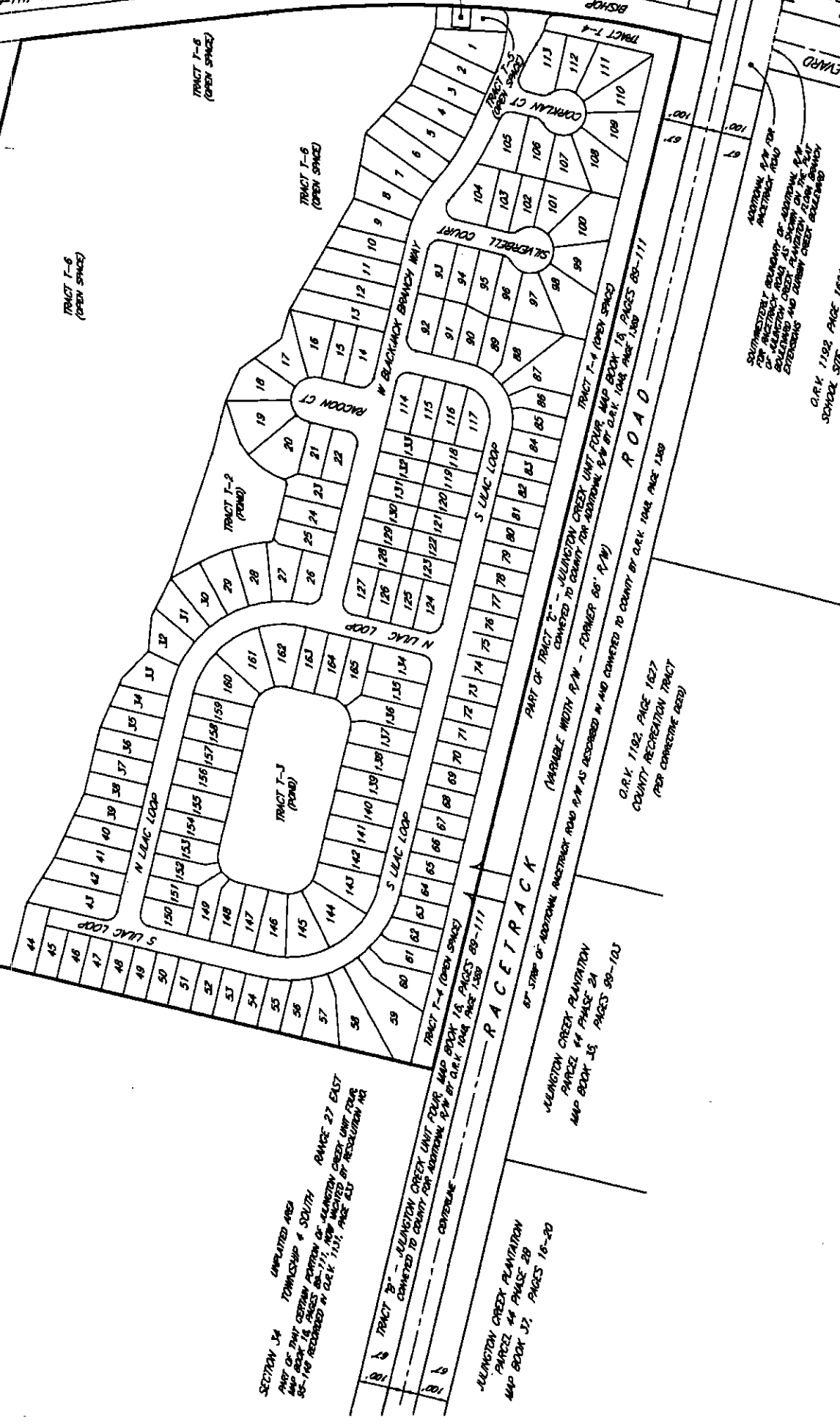
JULINGTON CREEK PLANTATION
PARCELS 32, 33, 34, 35, 36, 37, 38, 39, 40, 41, 42, 43, 44, 45, 46, 47, 48, 49, 50, 51, 52, 53, 54, 55, 56, 57, 58, 59

JULINGTON CREEK PLANTATION
PARCELS 44, 45, 46, 47, 48, 49, 50, 51, 52, 53, 54, 55, 56, 57, 58, 59, 60, 61, 62, 63, 64, 65, 66, 67, 68, 69, 70, 71, 72, 73, 74, 75, 76, 77, 78, 79, 80, 81, 82, 83, 84, 85, 86, 87, 88, 89, 90, 91, 92, 93, 94, 95, 96, 97, 98, 99, 100, 101, 102, 103, 104, 105, 106, 107, 108, 109, 110, 111, 112, 113

C.R.K. 1192, PAGE 1827
COUNTY RECREATION TRACT
(PER CORRECTIVE DEED)

SUBJECTIVE BOUNDARY OF ADDITIONAL P.W.
OF JULINGTON CREEK UNIT FOUR
CONVERTED TO COUNTY FOR ADDITIONAL P.W.
BY CLERK 1048 PAGE 1389
EXTENDING AND FORMERLY CREEK BOUNDARY

C.R.K. 1192, PAGE 1827
SUBJECT SITE - PARCELS 44-46
(PER CORRECTIVE DEED)



JULINGTON CREEK PLANTATION PARCEL 68

(NOT PART OF RECORD PLAT - FOR TAX ASSESSOR'S USE ONLY)