

RESOLUTION NO. 2002- 17
RESOLUTION OF THE BOARD OF COUNTY
COMMISSIONERS OF ST. JOHNS COUNTY, FLORIDA
APPROVING A SUBDIVISION PLAT FOR
PARKES OF JULINGTON CREEK PLANTATION PHASE SEVEN

WHEREAS, JULINGTON CREEK DEVELOPMENT CORPORATION, A FLORIDA CORPORATION, has applied to the Board of County Commissioners of St. Johns County, Florida for approval to record a subdivision plat known as Parkes of Julington Creek Plantation Phase Seven.

NOW, THEREFORE BE IT RESOLVED BY THE BOARD OF COUNTY COMMISSIONERS OF ST. JOHNS COUNTY, FLORIDA, as follows:

Section 1. The above-described subdivision plat and its dedicated areas depicted thereon are conditionally approved and accepted by the Board of County Commissioners of St. Johns County, Florida subject to Sections 2, 3, 4, and 5.

Section 2. A Construction Bond has been filed with the Clerk Of Courts in the amount of \$266,872.27.

Section 3. A Maintenance Bond in the amount of \$137,313.75 will be required.

Section 4. The approval and acceptance described in Section 1 shall not take effect until the Clerk has received a title opinion, certificate, or policy pertaining to the real property that is the subject of the aforementioned subdivision plat which opinion, certificate or policy is in a form acceptable to the County Attorney or Assistant County Attorney.

Section 5. The approval and acceptance described in Section 1 shall not take effect until the plat has been signed by each of the following departments, person or offices:

- a) Chairman or Vice-Chairman of the Board of County Commissioners of St. Johns County, Florida;
- b) Office of the County Attorney;

- c) County Planning and Zoning Department;
- d) Office of the County Surveyor; and
- e) Clerk of Courts.

The Clerk shall not sign or accept the Plat for recording until it has been signed by each of the above persons or entities described in a) through d) above. If the plat is not signed and accepted by the Clerk for recording within 14 days from the date hereof, then the above-described conditional approval shall automatically terminate. If the plat is signed by the Clerk on or before such time, the conditions described herein shall be deemed to have been met.

ADOPTED by the Board of County Commissioners of St. Johns County, Florida, this 5th day of February, 2002.

BOARD OF COUNTY COMMISSIONERS
OF ST. JOHNS COUNTY, FLORIDA

BY: Marc A. Jacalone
Marc A. Jacalone, Its Chair

ATTEST: Cheryl Strickland

Patricia DeGrande
Deputy Clerk

RENDITION DATE 2-7-02



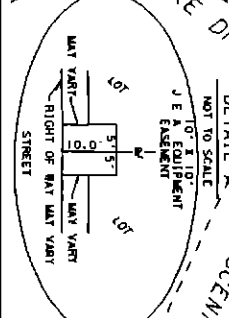
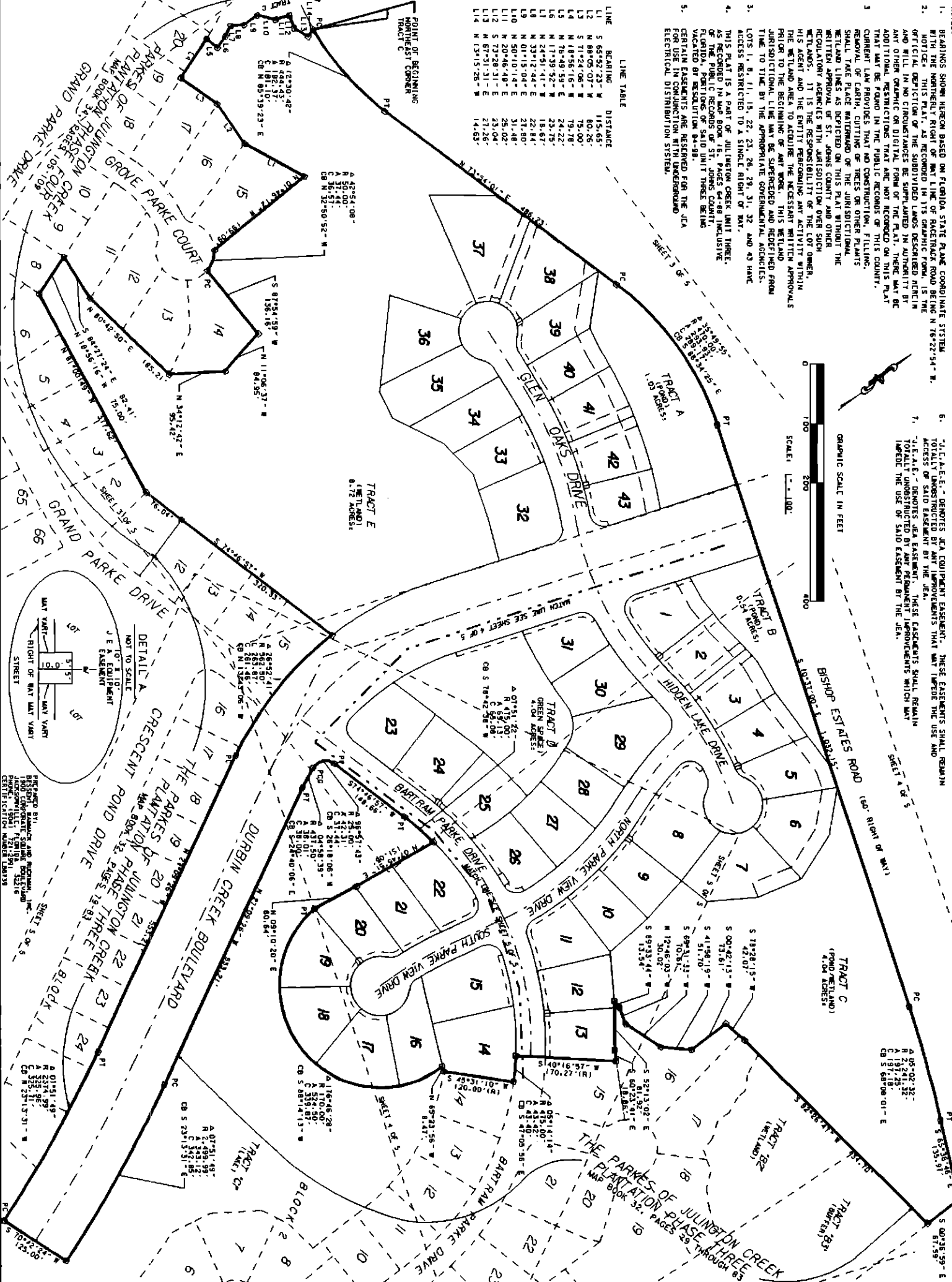
PARKES OF JULINGTON CREEK PLANTATION PHASE SEVEN

A PART OF THE JAMES JAMES DONATION, SECTION 49, TOWNSHIP 4 SOUTH, RANGE 27 EAST, ST. JOHNS COUNTY, FLORIDA

- NOTES:
1. BEARINGS SHOWN HEREON BASED ON FLORIDA STATE PLANE COORDINATE SYSTEM.
 2. THIS PLAT IS A PART OF JULINGTON CREEK UNIT THREE, AS RECORDED IN MAP BOOK 16, PAGES 64-68 INCLUSIVE OF THE PUBLIC RECORDS OF ST. JOHNS COUNTY, FLORIDA, PERTAINING TO SAID UNIT THREE BEING RECORDED IN SECTION 49-38.
 3. CURRENT LAW PROVIDES THAT NO CONSTRUCTION, FILLING, REMOVAL OF EARTH, CUTTING OF TREES OR OTHER PLANTS SHALL TAKE PLACE WITHIN THE JURISDICTIONAL WETLAND LINES AS DEPICTED ON THIS PLAT WITHOUT THE WRITTEN APPROVAL OF ST. JOHNS COUNTY AND OTHER REGULATORY AGENCIES WITH JURISDICTION OVER SUCH WETLANDS. IT IS THE RESPONSIBILITY OF THE LOT OWNER, HIS AGENT AND THE ENTITY PERFORMING ANY ACTIVITY WITHIN THE WETLAND AREA TO ACQUIRE THE NECESSARY WRITTEN APPROVALS PRIOR TO THE BEGINNING OF ANY WORK. THIS WETLAND JURISDICTIONAL LINE MAY BE SUPERSEDED AND REDIFIED FROM TIME TO TIME BY THE APPROPRIATE GOVERNMENT AGENCIES.
 4. THIS PLAT IS A PART OF JULINGTON CREEK UNIT THREE, AS RECORDED IN MAP BOOK 16, PAGES 64-68 INCLUSIVE OF THE PUBLIC RECORDS OF ST. JOHNS COUNTY, FLORIDA, PERTAINING TO SAID UNIT THREE BEING RECORDED IN SECTION 49-38.
 5. CENTER PLACEMENTS ARE RESTRICTED FOR THE JCA ELECTRICAL DISTRIBUTION SYSTEM.

LINE BEARING DISTANCE

L1	S 65°52'23" W	115.65'
L2	N 89°05'07" W	80.26'
L3	S 71°24'06" W	75.00'
L4	N 18°56'16" W	79.78'
L5	M 18°48'59" E	24.22'
L6	M 17°39'52" W	23.75'
L7	M 24°51'41" E	18.67'
L8	M 37°12'41" E	22.84'
L9	M 01°15'04" E	21.80'
L10	M 50°10'14" E	31.48'
L11	N 20°46'49" E	25.02'
L12	S 73°28'31" E	25.04'
L13	M 67°51'31" E	14.26'
L14	M 13°15'28" W	14.85'



PREPARED BY: [Name] AND [Name]
 ENGINEER: [Name]
 REGISTERED PROFESSIONAL ENGINEER
 FLORIDA LICENSE NO. [Number]
 ADDRESS: [Address]
 PHONE: [Phone Number]
 CENTRE SECTION NUMBER: [Number]