

RESOLUTION NO. 2002- 234
RESOLUTION OF THE BOARD OF COUNTY
COMMISSIONERS OF ST. JOHNS COUNTY, FLORIDA
APPROVING A SUBDIVISION PLAT FOR
MARSHALL CREEK DRI UNIT SV-3

WHEREAS, MARSHALL CREEK, LTD., a Florida Limited Partnership, has applied to the Board of County Commissioners of St. Johns County, Florida for approval to record a subdivision plat known as Marshall Creek DRI Unit SV-3.

NOW, THEREFORE BE IT RESOLVED BY THE BOARD OF COUNTY COMMISSIONERS OF ST. JOHNS COUNTY, FLORIDA, as follows:

Section 1. The above-described subdivision plat and its dedicated areas depicted thereon are conditionally approved and accepted by the Board of County Commissioners of St. Johns County, Florida subject to Sections 2, 3, 4 and 5.

Section 2. A Construction Bond for the amount of \$569,250.00 has been submitted to the Clerks' office.

Section 3. No Maintenance Bond is required.

Section 4. The approval and acceptance described in Section 1 shall not take effect until the Clerk has received a title opinion, certificate, or policy pertaining to the real property that is the subject of the aforementioned subdivision plat which opinion, certificate or policy is in a form acceptable to the County Attorney or Assistant County Attorney.

Section 5. The approval and acceptance described in Section 1 shall not take effect until the plat has been signed by each of the following departments, person or offices:

- a) Chairman or Vice-Chairman of the Board of County Commissioners of St. Johns County, Florida;
- b) Office of the County Attorney;
- c) County Planning and Zoning Department;
- d) Office of the County Surveyor; and
- e) Clerk of Courts.

The Clerk shall not sign or accept the Plat for recording until it has been signed by each of the above persons or entities described in a) through d) above. If the plat is not signed and accepted by the Clerk for recording within 14 days from the date hereof, then the above-described conditional approval shall automatically terminate. If the plat is signed by the Clerk on or before such time, the conditions described herein shall be deemed to have been met.

ADOPTED by the Board of County Commissioners of St. Johns County, Florida, this 5th day of November, 2002.

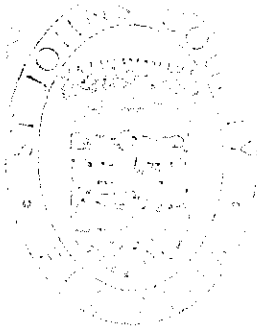
BOARD OF COUNTY COMMISSIONERS
OF ST. JOHNS COUNTY, FLORIDA

BY: James E. Bryant
James E. Bryant, Its Chair

ATTEST: Cheryl Strickland

Patricia DeGrande
Deputy Clerk

RENDITION DATE 11-12-02

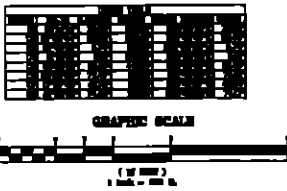


Marshall Creek DRI Unit SV-3

A PORTION OF SECTION 1, TOWNSHIP 8 NORTH, RANGE 29 EAST, 12-30-20 COUNTY, FLORIDA

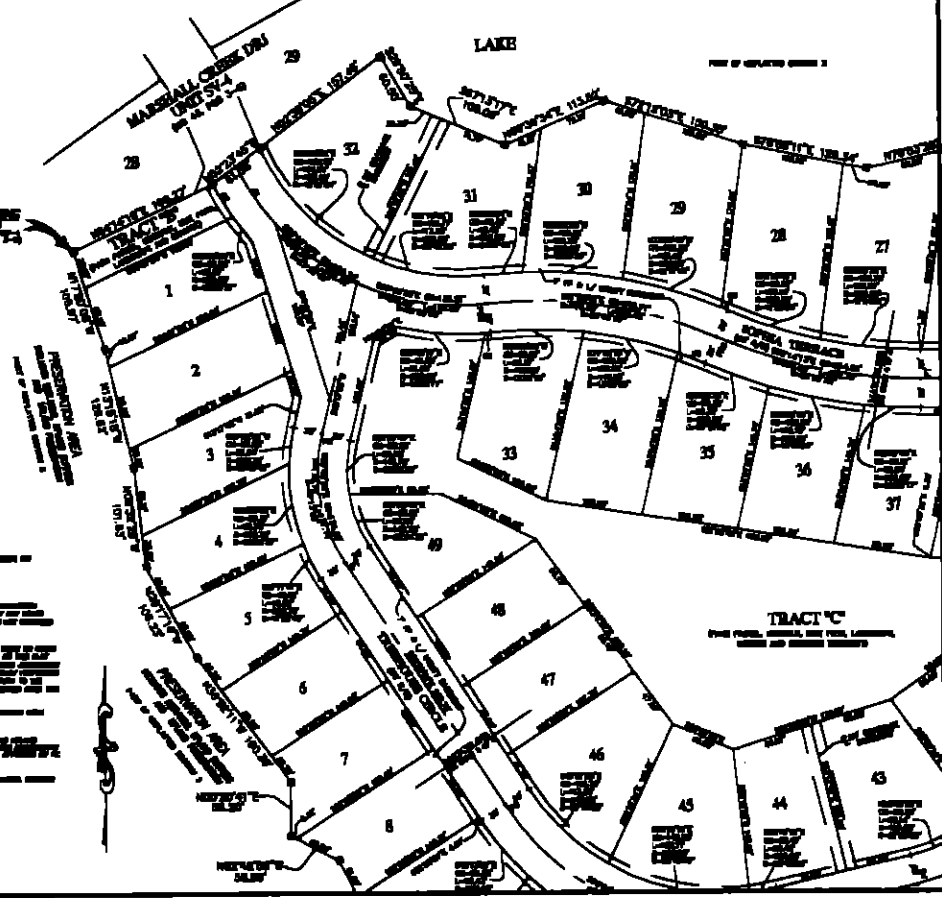
LEGEND:

- 1. MARSHALL CREEK DRI UNIT SV-3
- 2. MARSHALL CREEK DRI UNIT SV-4
- 3. MARSHALL CREEK DRI UNIT SV-5
- 4. MARSHALL CREEK DRI UNIT SV-6
- 5. MARSHALL CREEK DRI UNIT SV-7
- 6. MARSHALL CREEK DRI UNIT SV-8
- 7. MARSHALL CREEK DRI UNIT SV-9
- 8. MARSHALL CREEK DRI UNIT SV-10
- 9. MARSHALL CREEK DRI UNIT SV-11
- 10. MARSHALL CREEK DRI UNIT SV-12
- 11. MARSHALL CREEK DRI UNIT SV-13
- 12. MARSHALL CREEK DRI UNIT SV-14
- 13. MARSHALL CREEK DRI UNIT SV-15
- 14. MARSHALL CREEK DRI UNIT SV-16
- 15. MARSHALL CREEK DRI UNIT SV-17
- 16. MARSHALL CREEK DRI UNIT SV-18
- 17. MARSHALL CREEK DRI UNIT SV-19
- 18. MARSHALL CREEK DRI UNIT SV-20
- 19. MARSHALL CREEK DRI UNIT SV-21
- 20. MARSHALL CREEK DRI UNIT SV-22
- 21. MARSHALL CREEK DRI UNIT SV-23
- 22. MARSHALL CREEK DRI UNIT SV-24
- 23. MARSHALL CREEK DRI UNIT SV-25
- 24. MARSHALL CREEK DRI UNIT SV-26
- 25. MARSHALL CREEK DRI UNIT SV-27
- 26. MARSHALL CREEK DRI UNIT SV-28
- 27. MARSHALL CREEK DRI UNIT SV-29
- 28. MARSHALL CREEK DRI UNIT SV-30
- 29. MARSHALL CREEK DRI UNIT SV-31
- 30. MARSHALL CREEK DRI UNIT SV-32
- 31. MARSHALL CREEK DRI UNIT SV-33
- 32. MARSHALL CREEK DRI UNIT SV-34
- 33. MARSHALL CREEK DRI UNIT SV-35
- 34. MARSHALL CREEK DRI UNIT SV-36
- 35. MARSHALL CREEK DRI UNIT SV-37
- 36. MARSHALL CREEK DRI UNIT SV-38
- 37. MARSHALL CREEK DRI UNIT SV-39
- 38. MARSHALL CREEK DRI UNIT SV-40
- 39. MARSHALL CREEK DRI UNIT SV-41
- 40. MARSHALL CREEK DRI UNIT SV-42
- 41. MARSHALL CREEK DRI UNIT SV-43
- 42. MARSHALL CREEK DRI UNIT SV-44
- 43. MARSHALL CREEK DRI UNIT SV-45
- 44. MARSHALL CREEK DRI UNIT SV-46
- 45. MARSHALL CREEK DRI UNIT SV-47
- 46. MARSHALL CREEK DRI UNIT SV-48
- 47. MARSHALL CREEK DRI UNIT SV-49
- 48. MARSHALL CREEK DRI UNIT SV-50
- 49. MARSHALL CREEK DRI UNIT SV-51
- 50. MARSHALL CREEK DRI UNIT SV-52
- 51. MARSHALL CREEK DRI UNIT SV-53
- 52. MARSHALL CREEK DRI UNIT SV-54
- 53. MARSHALL CREEK DRI UNIT SV-55
- 54. MARSHALL CREEK DRI UNIT SV-56
- 55. MARSHALL CREEK DRI UNIT SV-57
- 56. MARSHALL CREEK DRI UNIT SV-58
- 57. MARSHALL CREEK DRI UNIT SV-59
- 58. MARSHALL CREEK DRI UNIT SV-60
- 59. MARSHALL CREEK DRI UNIT SV-61
- 60. MARSHALL CREEK DRI UNIT SV-62
- 61. MARSHALL CREEK DRI UNIT SV-63
- 62. MARSHALL CREEK DRI UNIT SV-64
- 63. MARSHALL CREEK DRI UNIT SV-65
- 64. MARSHALL CREEK DRI UNIT SV-66
- 65. MARSHALL CREEK DRI UNIT SV-67
- 66. MARSHALL CREEK DRI UNIT SV-68
- 67. MARSHALL CREEK DRI UNIT SV-69
- 68. MARSHALL CREEK DRI UNIT SV-70
- 69. MARSHALL CREEK DRI UNIT SV-71
- 70. MARSHALL CREEK DRI UNIT SV-72
- 71. MARSHALL CREEK DRI UNIT SV-73
- 72. MARSHALL CREEK DRI UNIT SV-74
- 73. MARSHALL CREEK DRI UNIT SV-75
- 74. MARSHALL CREEK DRI UNIT SV-76
- 75. MARSHALL CREEK DRI UNIT SV-77
- 76. MARSHALL CREEK DRI UNIT SV-78
- 77. MARSHALL CREEK DRI UNIT SV-79
- 78. MARSHALL CREEK DRI UNIT SV-80
- 79. MARSHALL CREEK DRI UNIT SV-81
- 80. MARSHALL CREEK DRI UNIT SV-82
- 81. MARSHALL CREEK DRI UNIT SV-83
- 82. MARSHALL CREEK DRI UNIT SV-84
- 83. MARSHALL CREEK DRI UNIT SV-85
- 84. MARSHALL CREEK DRI UNIT SV-86
- 85. MARSHALL CREEK DRI UNIT SV-87
- 86. MARSHALL CREEK DRI UNIT SV-88
- 87. MARSHALL CREEK DRI UNIT SV-89
- 88. MARSHALL CREEK DRI UNIT SV-90
- 89. MARSHALL CREEK DRI UNIT SV-91
- 90. MARSHALL CREEK DRI UNIT SV-92
- 91. MARSHALL CREEK DRI UNIT SV-93
- 92. MARSHALL CREEK DRI UNIT SV-94
- 93. MARSHALL CREEK DRI UNIT SV-95
- 94. MARSHALL CREEK DRI UNIT SV-96
- 95. MARSHALL CREEK DRI UNIT SV-97
- 96. MARSHALL CREEK DRI UNIT SV-98
- 97. MARSHALL CREEK DRI UNIT SV-99
- 98. MARSHALL CREEK DRI UNIT SV-100



- GENERAL NOTES:**
1. THIS MAP IS A PART OF THE MARSHALL CREEK DRI UNIT SV-3 AND IS NOT TO BE USED SEPARATELY FROM THE OTHER PARTS OF THE UNIT.
 2. THE MARSHALL CREEK DRI UNIT SV-3 IS A DEVELOPMENT OF 100 LOTS.
 3. THE MARSHALL CREEK DRI UNIT SV-3 IS A DEVELOPMENT OF 100 LOTS.
 4. THE MARSHALL CREEK DRI UNIT SV-3 IS A DEVELOPMENT OF 100 LOTS.
 5. THE MARSHALL CREEK DRI UNIT SV-3 IS A DEVELOPMENT OF 100 LOTS.
 6. THE MARSHALL CREEK DRI UNIT SV-3 IS A DEVELOPMENT OF 100 LOTS.
 7. THE MARSHALL CREEK DRI UNIT SV-3 IS A DEVELOPMENT OF 100 LOTS.
 8. THE MARSHALL CREEK DRI UNIT SV-3 IS A DEVELOPMENT OF 100 LOTS.
 9. THE MARSHALL CREEK DRI UNIT SV-3 IS A DEVELOPMENT OF 100 LOTS.
 10. THE MARSHALL CREEK DRI UNIT SV-3 IS A DEVELOPMENT OF 100 LOTS.
 11. THE MARSHALL CREEK DRI UNIT SV-3 IS A DEVELOPMENT OF 100 LOTS.
 12. THE MARSHALL CREEK DRI UNIT SV-3 IS A DEVELOPMENT OF 100 LOTS.
 13. THE MARSHALL CREEK DRI UNIT SV-3 IS A DEVELOPMENT OF 100 LOTS.
 14. THE MARSHALL CREEK DRI UNIT SV-3 IS A DEVELOPMENT OF 100 LOTS.
 15. THE MARSHALL CREEK DRI UNIT SV-3 IS A DEVELOPMENT OF 100 LOTS.
 16. THE MARSHALL CREEK DRI UNIT SV-3 IS A DEVELOPMENT OF 100 LOTS.
 17. THE MARSHALL CREEK DRI UNIT SV-3 IS A DEVELOPMENT OF 100 LOTS.
 18. THE MARSHALL CREEK DRI UNIT SV-3 IS A DEVELOPMENT OF 100 LOTS.
 19. THE MARSHALL CREEK DRI UNIT SV-3 IS A DEVELOPMENT OF 100 LOTS.
 20. THE MARSHALL CREEK DRI UNIT SV-3 IS A DEVELOPMENT OF 100 LOTS.
 21. THE MARSHALL CREEK DRI UNIT SV-3 IS A DEVELOPMENT OF 100 LOTS.
 22. THE MARSHALL CREEK DRI UNIT SV-3 IS A DEVELOPMENT OF 100 LOTS.
 23. THE MARSHALL CREEK DRI UNIT SV-3 IS A DEVELOPMENT OF 100 LOTS.
 24. THE MARSHALL CREEK DRI UNIT SV-3 IS A DEVELOPMENT OF 100 LOTS.
 25. THE MARSHALL CREEK DRI UNIT SV-3 IS A DEVELOPMENT OF 100 LOTS.
 26. THE MARSHALL CREEK DRI UNIT SV-3 IS A DEVELOPMENT OF 100 LOTS.
 27. THE MARSHALL CREEK DRI UNIT SV-3 IS A DEVELOPMENT OF 100 LOTS.
 28. THE MARSHALL CREEK DRI UNIT SV-3 IS A DEVELOPMENT OF 100 LOTS.
 29. THE MARSHALL CREEK DRI UNIT SV-3 IS A DEVELOPMENT OF 100 LOTS.
 30. THE MARSHALL CREEK DRI UNIT SV-3 IS A DEVELOPMENT OF 100 LOTS.
 31. THE MARSHALL CREEK DRI UNIT SV-3 IS A DEVELOPMENT OF 100 LOTS.
 32. THE MARSHALL CREEK DRI UNIT SV-3 IS A DEVELOPMENT OF 100 LOTS.
 33. THE MARSHALL CREEK DRI UNIT SV-3 IS A DEVELOPMENT OF 100 LOTS.
 34. THE MARSHALL CREEK DRI UNIT SV-3 IS A DEVELOPMENT OF 100 LOTS.
 35. THE MARSHALL CREEK DRI UNIT SV-3 IS A DEVELOPMENT OF 100 LOTS.
 36. THE MARSHALL CREEK DRI UNIT SV-3 IS A DEVELOPMENT OF 100 LOTS.
 37. THE MARSHALL CREEK DRI UNIT SV-3 IS A DEVELOPMENT OF 100 LOTS.
 38. THE MARSHALL CREEK DRI UNIT SV-3 IS A DEVELOPMENT OF 100 LOTS.
 39. THE MARSHALL CREEK DRI UNIT SV-3 IS A DEVELOPMENT OF 100 LOTS.
 40. THE MARSHALL CREEK DRI UNIT SV-3 IS A DEVELOPMENT OF 100 LOTS.
 41. THE MARSHALL CREEK DRI UNIT SV-3 IS A DEVELOPMENT OF 100 LOTS.
 42. THE MARSHALL CREEK DRI UNIT SV-3 IS A DEVELOPMENT OF 100 LOTS.
 43. THE MARSHALL CREEK DRI UNIT SV-3 IS A DEVELOPMENT OF 100 LOTS.
 44. THE MARSHALL CREEK DRI UNIT SV-3 IS A DEVELOPMENT OF 100 LOTS.
 45. THE MARSHALL CREEK DRI UNIT SV-3 IS A DEVELOPMENT OF 100 LOTS.
 46. THE MARSHALL CREEK DRI UNIT SV-3 IS A DEVELOPMENT OF 100 LOTS.
 47. THE MARSHALL CREEK DRI UNIT SV-3 IS A DEVELOPMENT OF 100 LOTS.
 48. THE MARSHALL CREEK DRI UNIT SV-3 IS A DEVELOPMENT OF 100 LOTS.
 49. THE MARSHALL CREEK DRI UNIT SV-3 IS A DEVELOPMENT OF 100 LOTS.
 50. THE MARSHALL CREEK DRI UNIT SV-3 IS A DEVELOPMENT OF 100 LOTS.
 51. THE MARSHALL CREEK DRI UNIT SV-3 IS A DEVELOPMENT OF 100 LOTS.
 52. THE MARSHALL CREEK DRI UNIT SV-3 IS A DEVELOPMENT OF 100 LOTS.
 53. THE MARSHALL CREEK DRI UNIT SV-3 IS A DEVELOPMENT OF 100 LOTS.
 54. THE MARSHALL CREEK DRI UNIT SV-3 IS A DEVELOPMENT OF 100 LOTS.
 55. THE MARSHALL CREEK DRI UNIT SV-3 IS A DEVELOPMENT OF 100 LOTS.
 56. THE MARSHALL CREEK DRI UNIT SV-3 IS A DEVELOPMENT OF 100 LOTS.
 57. THE MARSHALL CREEK DRI UNIT SV-3 IS A DEVELOPMENT OF 100 LOTS.
 58. THE MARSHALL CREEK DRI UNIT SV-3 IS A DEVELOPMENT OF 100 LOTS.
 59. THE MARSHALL CREEK DRI UNIT SV-3 IS A DEVELOPMENT OF 100 LOTS.
 60. THE MARSHALL CREEK DRI UNIT SV-3 IS A DEVELOPMENT OF 100 LOTS.
 61. THE MARSHALL CREEK DRI UNIT SV-3 IS A DEVELOPMENT OF 100 LOTS.
 62. THE MARSHALL CREEK DRI UNIT SV-3 IS A DEVELOPMENT OF 100 LOTS.
 63. THE MARSHALL CREEK DRI UNIT SV-3 IS A DEVELOPMENT OF 100 LOTS.
 64. THE MARSHALL CREEK DRI UNIT SV-3 IS A DEVELOPMENT OF 100 LOTS.
 65. THE MARSHALL CREEK DRI UNIT SV-3 IS A DEVELOPMENT OF 100 LOTS.
 66. THE MARSHALL CREEK DRI UNIT SV-3 IS A DEVELOPMENT OF 100 LOTS.
 67. THE MARSHALL CREEK DRI UNIT SV-3 IS A DEVELOPMENT OF 100 LOTS.
 68. THE MARSHALL CREEK DRI UNIT SV-3 IS A DEVELOPMENT OF 100 LOTS.
 69. THE MARSHALL CREEK DRI UNIT SV-3 IS A DEVELOPMENT OF 100 LOTS.
 70. THE MARSHALL CREEK DRI UNIT SV-3 IS A DEVELOPMENT OF 100 LOTS.
 71. THE MARSHALL CREEK DRI UNIT SV-3 IS A DEVELOPMENT OF 100 LOTS.
 72. THE MARSHALL CREEK DRI UNIT SV-3 IS A DEVELOPMENT OF 100 LOTS.
 73. THE MARSHALL CREEK DRI UNIT SV-3 IS A DEVELOPMENT OF 100 LOTS.
 74. THE MARSHALL CREEK DRI UNIT SV-3 IS A DEVELOPMENT OF 100 LOTS.
 75. THE MARSHALL CREEK DRI UNIT SV-3 IS A DEVELOPMENT OF 100 LOTS.
 76. THE MARSHALL CREEK DRI UNIT SV-3 IS A DEVELOPMENT OF 100 LOTS.
 77. THE MARSHALL CREEK DRI UNIT SV-3 IS A DEVELOPMENT OF 100 LOTS.
 78. THE MARSHALL CREEK DRI UNIT SV-3 IS A DEVELOPMENT OF 100 LOTS.
 79. THE MARSHALL CREEK DRI UNIT SV-3 IS A DEVELOPMENT OF 100 LOTS.
 80. THE MARSHALL CREEK DRI UNIT SV-3 IS A DEVELOPMENT OF 100 LOTS.
 81. THE MARSHALL CREEK DRI UNIT SV-3 IS A DEVELOPMENT OF 100 LOTS.
 82. THE MARSHALL CREEK DRI UNIT SV-3 IS A DEVELOPMENT OF 100 LOTS.
 83. THE MARSHALL CREEK DRI UNIT SV-3 IS A DEVELOPMENT OF 100 LOTS.
 84. THE MARSHALL CREEK DRI UNIT SV-3 IS A DEVELOPMENT OF 100 LOTS.
 85. THE MARSHALL CREEK DRI UNIT SV-3 IS A DEVELOPMENT OF 100 LOTS.
 86. THE MARSHALL CREEK DRI UNIT SV-3 IS A DEVELOPMENT OF 100 LOTS.
 87. THE MARSHALL CREEK DRI UNIT SV-3 IS A DEVELOPMENT OF 100 LOTS.
 88. THE MARSHALL CREEK DRI UNIT SV-3 IS A DEVELOPMENT OF 100 LOTS.
 89. THE MARSHALL CREEK DRI UNIT SV-3 IS A DEVELOPMENT OF 100 LOTS.
 90. THE MARSHALL CREEK DRI UNIT SV-3 IS A DEVELOPMENT OF 100 LOTS.
 91. THE MARSHALL CREEK DRI UNIT SV-3 IS A DEVELOPMENT OF 100 LOTS.
 92. THE MARSHALL CREEK DRI UNIT SV-3 IS A DEVELOPMENT OF 100 LOTS.
 93. THE MARSHALL CREEK DRI UNIT SV-3 IS A DEVELOPMENT OF 100 LOTS.
 94. THE MARSHALL CREEK DRI UNIT SV-3 IS A DEVELOPMENT OF 100 LOTS.
 95. THE MARSHALL CREEK DRI UNIT SV-3 IS A DEVELOPMENT OF 100 LOTS.
 96. THE MARSHALL CREEK DRI UNIT SV-3 IS A DEVELOPMENT OF 100 LOTS.
 97. THE MARSHALL CREEK DRI UNIT SV-3 IS A DEVELOPMENT OF 100 LOTS.
 98. THE MARSHALL CREEK DRI UNIT SV-3 IS A DEVELOPMENT OF 100 LOTS.
 99. THE MARSHALL CREEK DRI UNIT SV-3 IS A DEVELOPMENT OF 100 LOTS.
 100. THE MARSHALL CREEK DRI UNIT SV-3 IS A DEVELOPMENT OF 100 LOTS.

PREPARED BY:
OF FLORIDA, INC.
 ENGINEERS AND ARCHITECTS
 1000 N. W. 10th Street
 Fort Lauderdale, Florida 33304
 PHONE: (305) 555-1234
 FAX: (305) 555-5678



Marshall Creek DRI Unit SV-3

A PORTION OF SECTION 2, TOWNSHIP 6 NORTH, RANGE 16 EAST, 24TH RANGE, FLORIDA

